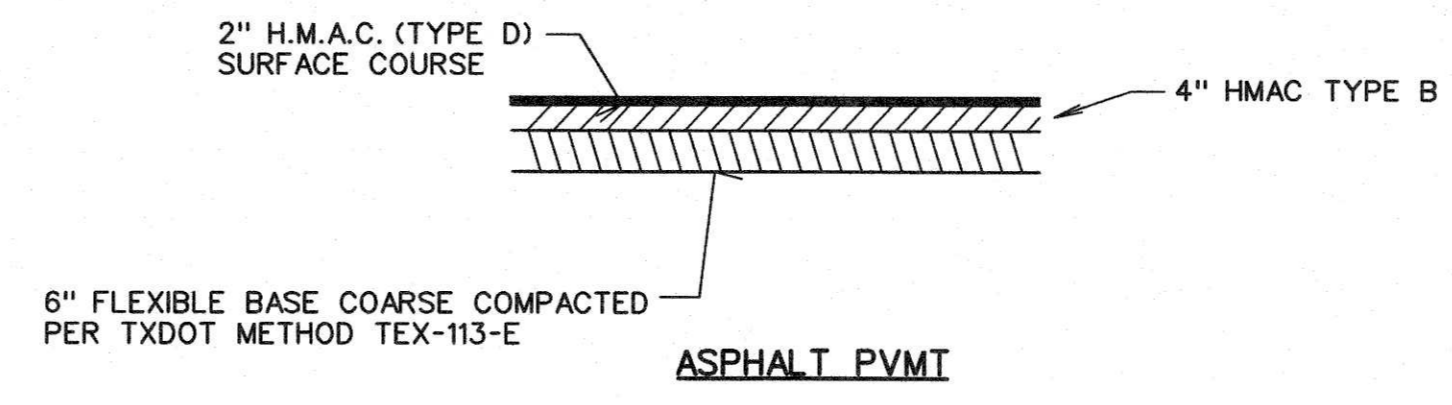
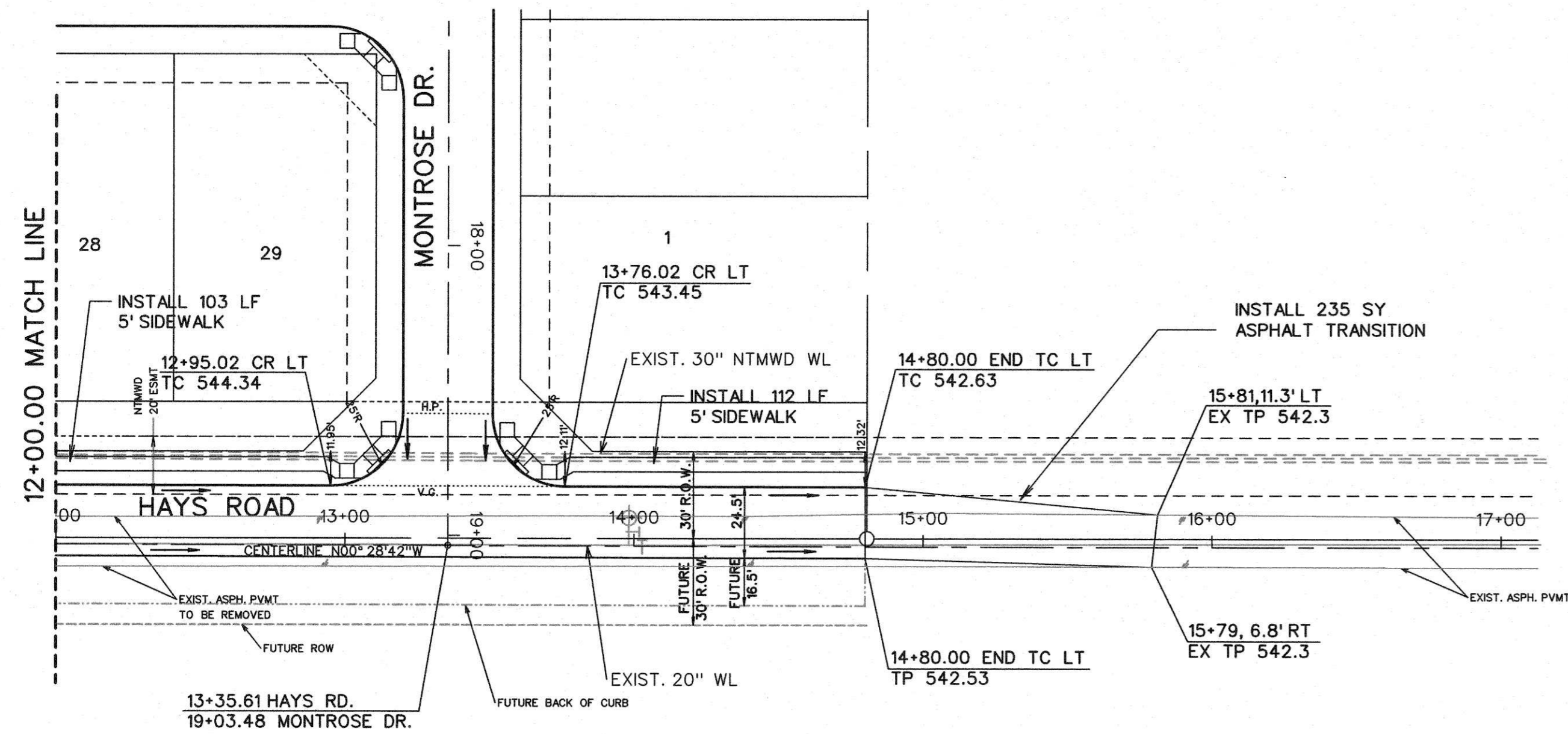




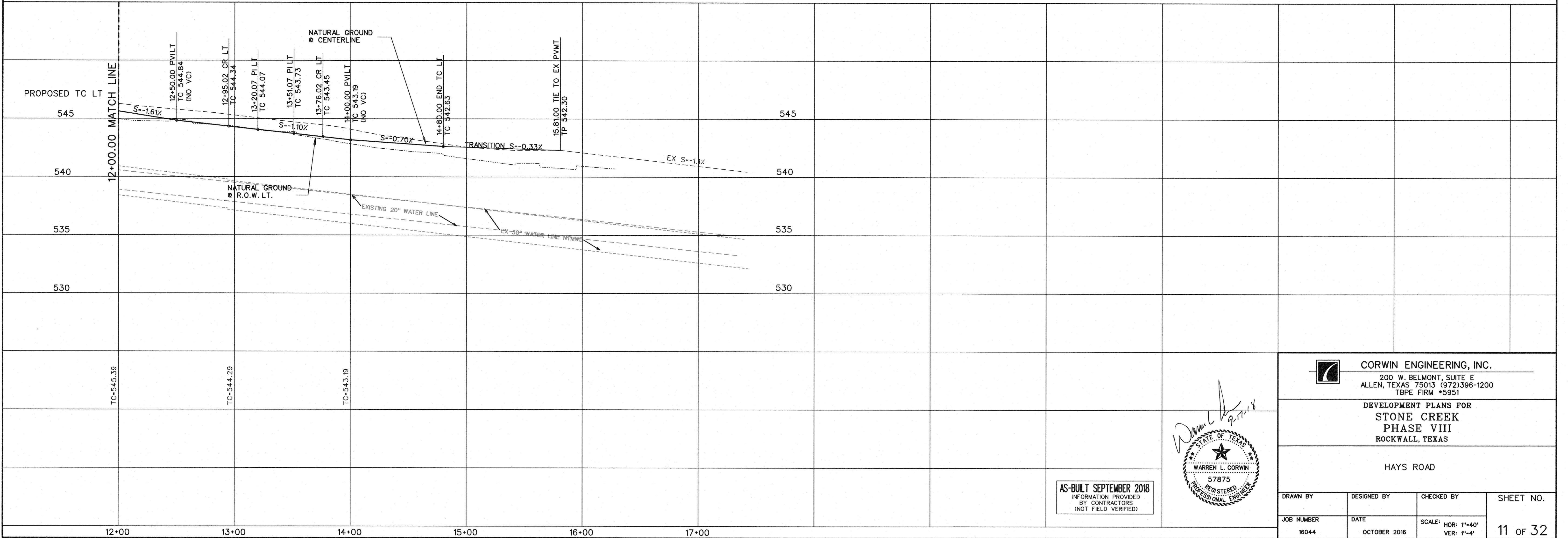
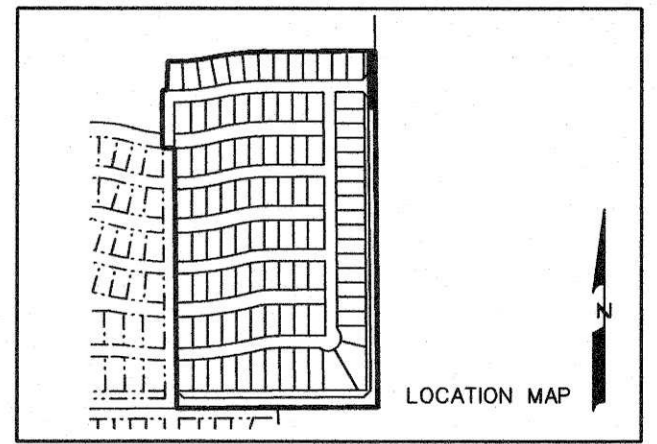
SCALE: 1" = 40'



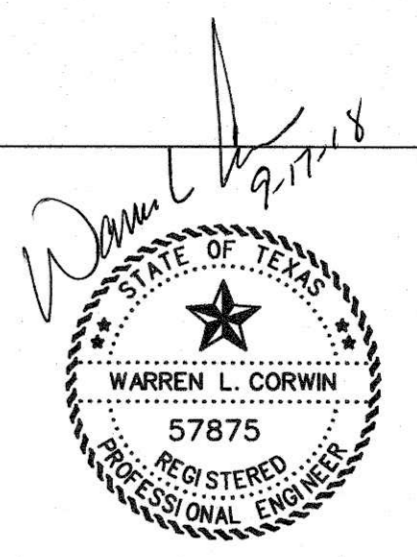
NOTE:
EXISTING ASPHALT ROAD TO BE REMOVED TO STA. 15+81

NOTE:
HAYS ROAD CENTERLINE BEARING N00°28'42"W TO MEET MINIMUM DISTANCE FROM NTMWD 30" WATER LINE TO PROPOSED PAVEMENT.

NOTE:
THE CONTRACTOR SHALL CONTACT NTMWD ENGINEERING AT (972) 442-5405 AT LEAST 48 HOURS PRIOR TO PERFORMING ANY WORK IN THE VICINITY OF THE NTMWD FACILITIES.



AS-BUILT SEPTEMBER 2018
INFORMATION PROVIDED BY CONTRACTORS (NOT FIELD VERIFIED)



CORWIN ENGINEERING, INC.
200 W. BELMONT, SUITE E
ALLEN, TEXAS 75013 (972)396-1200
TBPE FIRM #5951

DEVELOPMENT PLANS FOR
**STONE CREEK
PHASE VIII**
ROCKWALL, TEXAS

HAYS ROAD

DRAWN BY	DESIGNED BY	CHECKED BY	SHEET NO.
JOB NUMBER	DATE	SCALE: HOR: 1"=40' VER: 1"=4'	11 OF 32
18044	OCTOBER 2016		