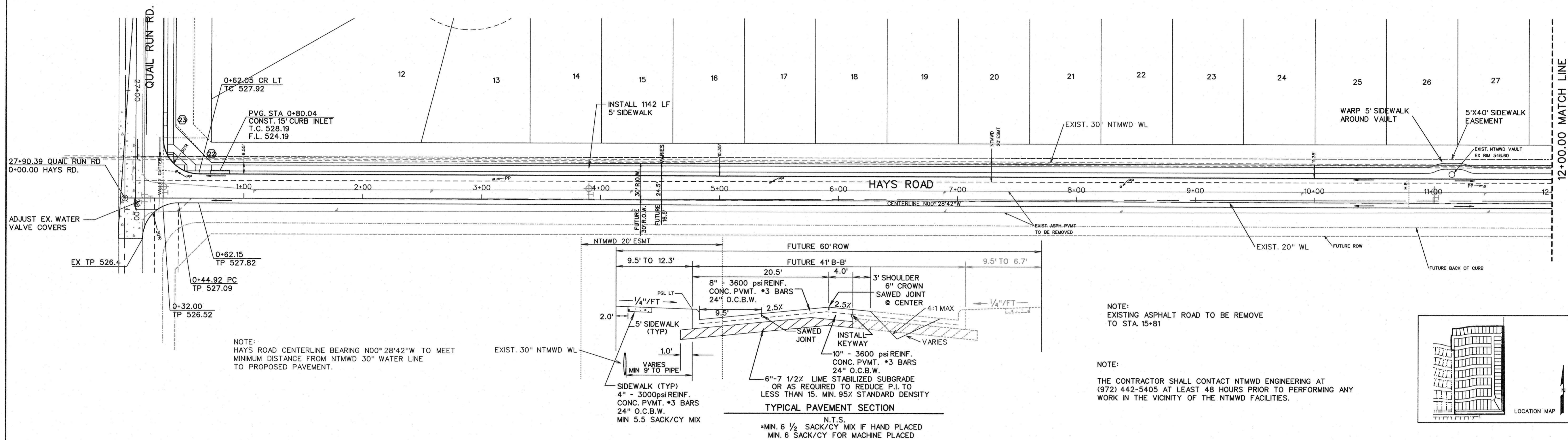


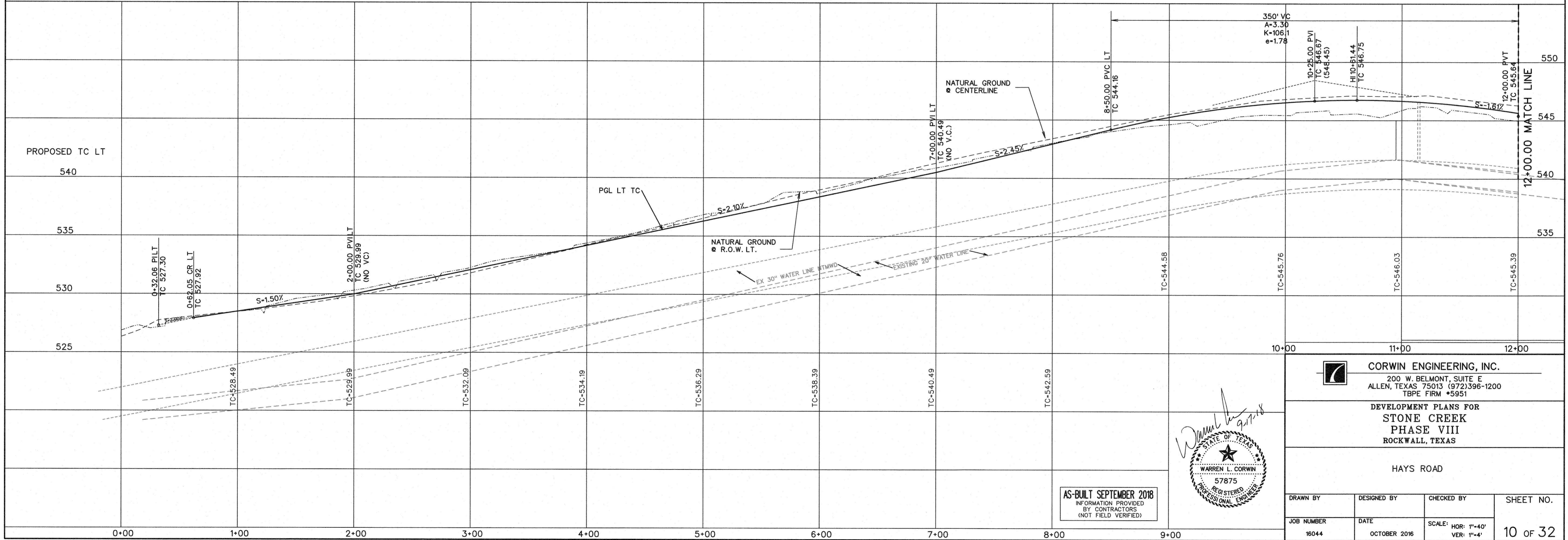
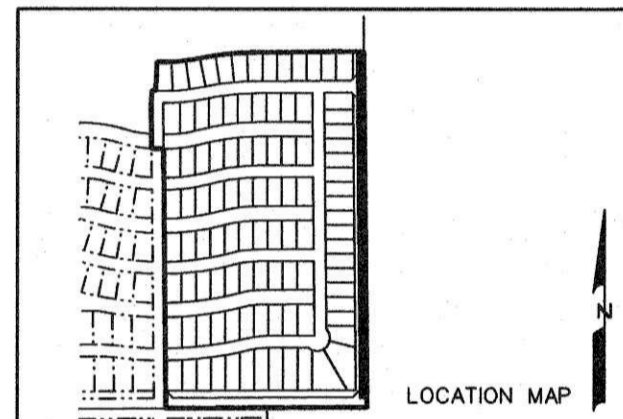
SCALE: 1" = 40'



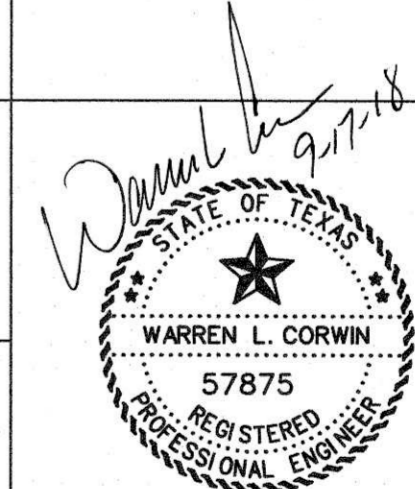
NOTE:
HAYS ROAD CENTERLINE BEARING N00°28'42"W TO MEET
MINIMUM DISTANCE FROM NTMWD 30" WATER LINE
TO PROPOSED PAVEMENT.

NOTE:
EXISTING ASPHALT ROAD TO BE REMOVE
TO STA. 15+81

NOTE:
THE CONTRACTOR SHALL CONTACT NTMWD ENGINEERING AT
(972) 442-5405 AT LEAST 48 HOURS PRIOR TO PERFORMING ANY
WORK IN THE VICINITY OF THE NTMWD FACILITIES.



AS-BUILT SEPTEMBER 2018
INFORMATION PROVIDED
BY CONTRACTORS
(NOT FIELD VERIFIED)



CORWIN ENGINEERING, INC.
200 W. BELMONT, SUITE E
ALLEN, TEXAS 75013 (972) 396-1200
TBPPE FIRM #5951

DEVELOPMENT PLANS FOR
**STONE CREEK
PHASE VIII**
ROCKWALL, TEXAS

HAYS ROAD

DRAWN BY	DESIGNED BY	CHECKED BY	SHEET NO.
JOB NUMBER	DATE	SCALE: HOR: 1"=40' VER: 1"=4'	10 OF 32
18044	OCTOBER 2016		