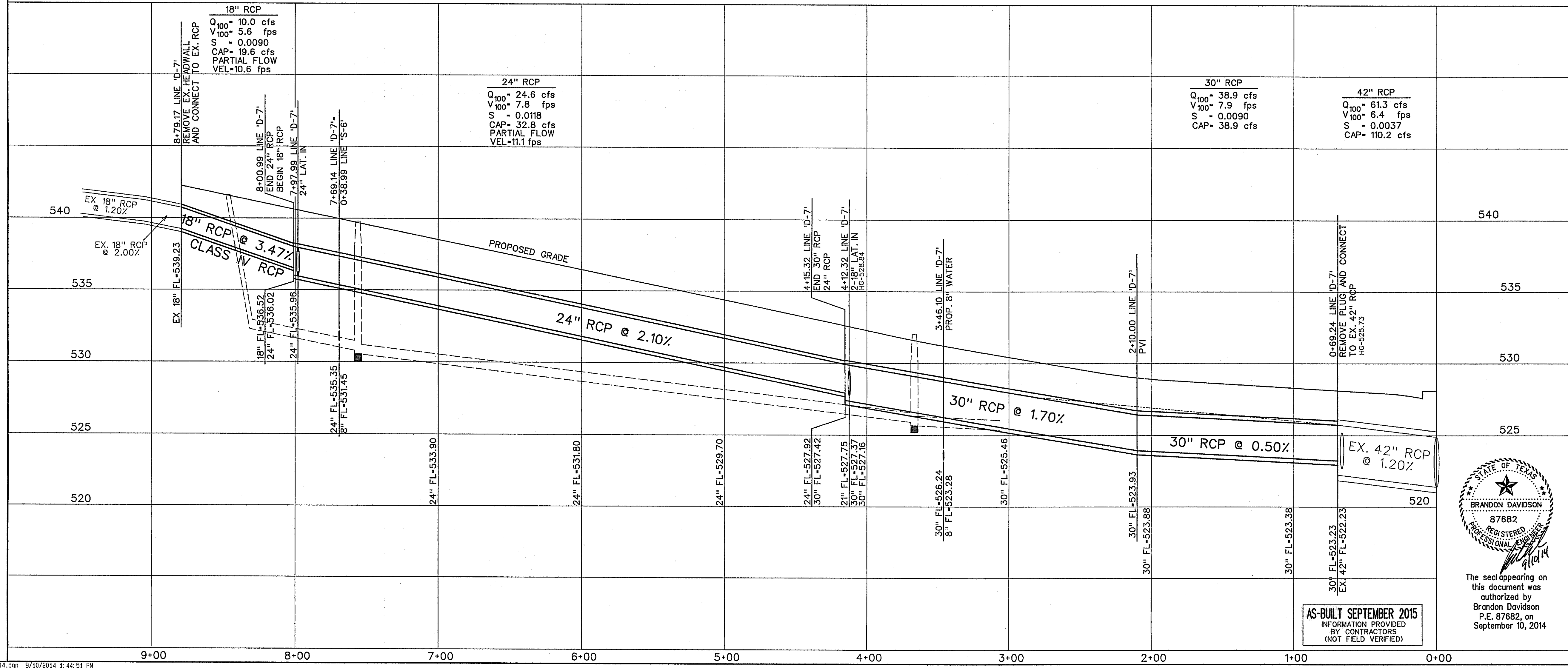


- LEGEND**
- (B) - BLOCK LABEL
  - (19) - INLET NUMBER
  - (1) - CURVE NUMBER
  - - SANITARY SEWER
  - ⊕ - WATER
  - ==== - PROPOSED STORM SEWER
  - ==== - EXISTING STORM SEWER
- BENCHMARK:**  
 CITY OF ROCKWALL SURVEY MONUMENT ON AN INLET  
 AT THE NORTHWEST CORNER OF FEATHERSTONE DR. AND  
 HARVARD DR.  
 ELEV. = 525.31



**CORWIN ENGINEERING, INC.**  
 200 W. BELMONT, SUITE E  
 ALLEN, TEXAS 75013 (972)396-1200  
 TBPE FIRM #5951

**DEVELOPMENT PLANS FOR  
 STONE CREEK  
 PHASE VI  
 ROCKWALL, TEXAS**

**STORM SEWER PLAN AND PROFILE  
 LINE 'D-7'**

DRAWN BY	DESIGNED BY	CHECKED BY	SHEET NO.
JOB NUMBER	DATE	SCALE: HOR: 1"=40' VER: 1"=4'	21 of 26
13068	MAY 2014		



**AS-BUILT SEPTEMBER 2015**  
 INFORMATION PROVIDED  
 BY CONTRACTORS  
 (NOT FIELD VERIFIED)

The seal appearing on  
 this document was  
 authorized by  
 Brandon Davidson  
 P.E. 87682, on  
 September 10, 2014