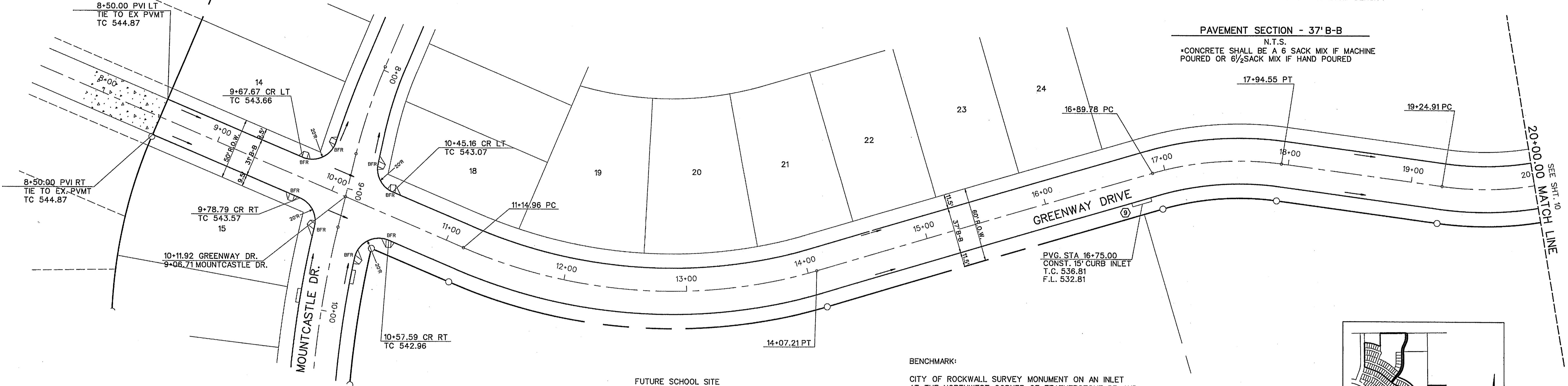
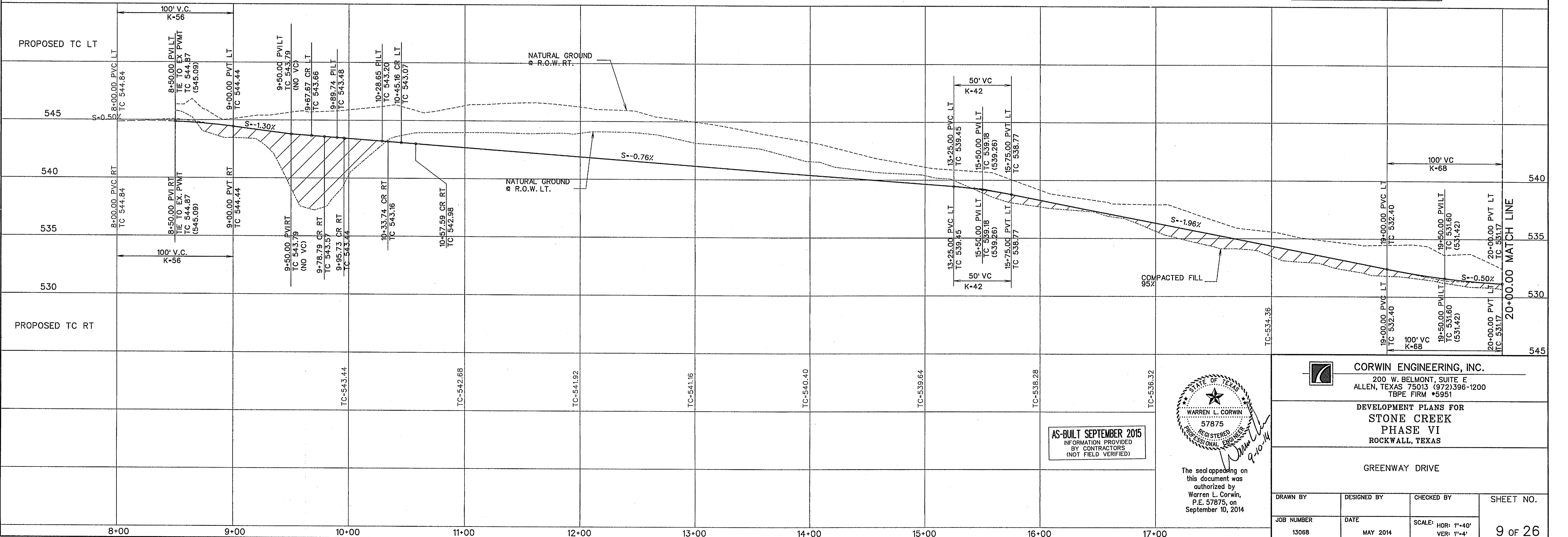
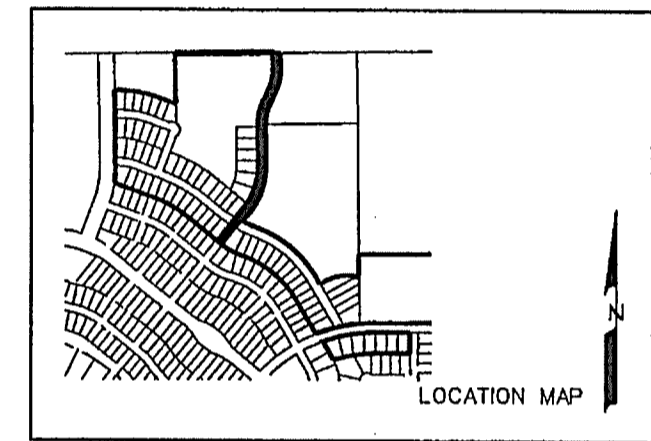


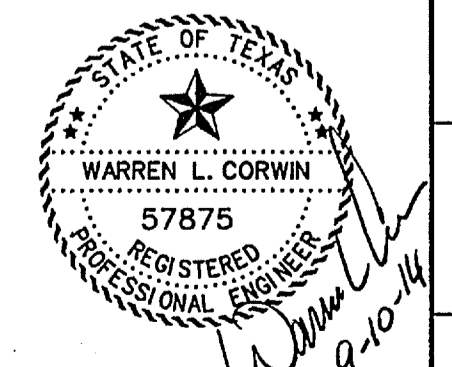
PAVEMENT SECTION - 37' B-B  
N.T.S.  
\*CONCRETE SHALL BE A 6 SACK MIX IF MACHINE  
POURED OR 6 1/2 SACK MIX IF HAND POURED



BENCHMARK:  
CITY OF ROCKWALL SURVEY MONUMENT ON AN INLET  
AT THE NORTHWEST CORNER OF FEATHERSTONE DR. AND  
HARVARD DR.  
ELEV. - 525.31



AS-BUILT SEPTEMBER 2015  
INFORMATION PROVIDED  
BY CONTRACTORS  
(NOT FIELD VERIFIED)



The seal appearing on  
this document was  
authorized by  
Warren L. Corwin,  
P.E. 57875, on  
September 10, 2014

**CORWIN ENGINEERING, INC.**  
200 W. BELMONT, SUITE E  
ALLEN, TEXAS 75013 (972) 396-1200  
TBPE FIRM #5951

DEVELOPMENT PLANS FOR  
**STONE CREEK**  
PHASE VI  
ROCKWALL, TEXAS

GREENWAY DRIVE

DRAWN BY	DESIGNED BY	CHECKED BY	SHEET NO.
JOB NUMBER	DATE	SCALE: HOR: 1"=40' VER: 1"=4'	9 of 26
13068	MAY 2014		