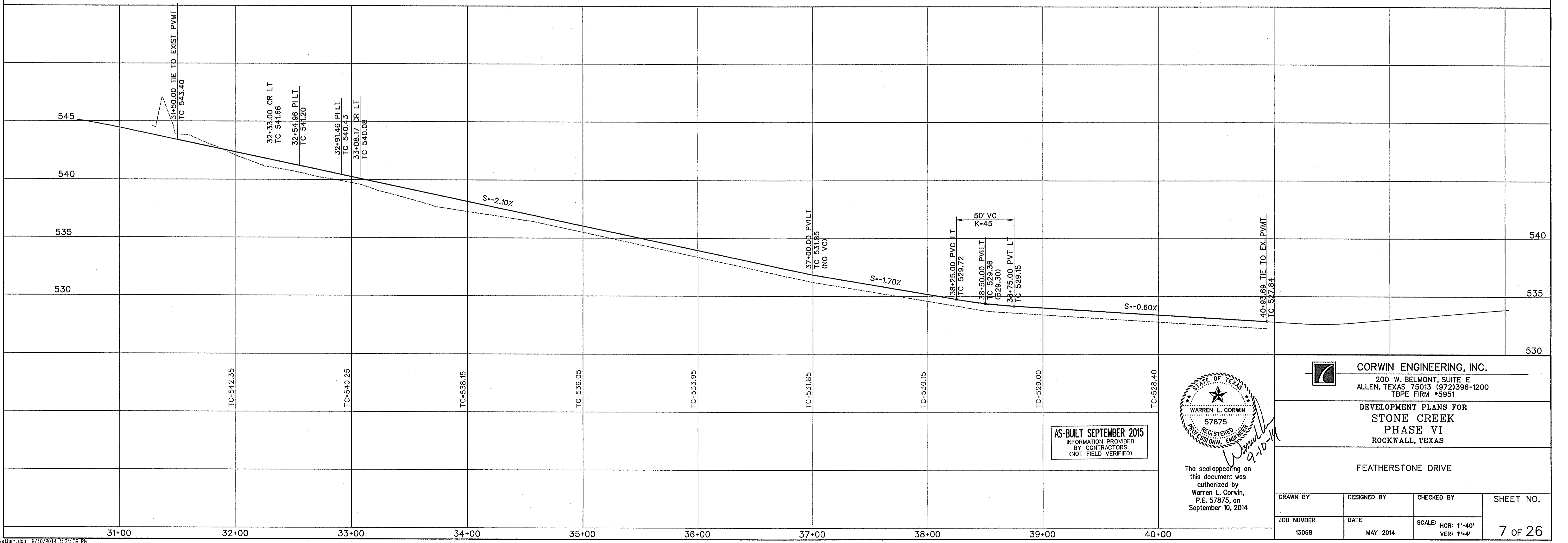
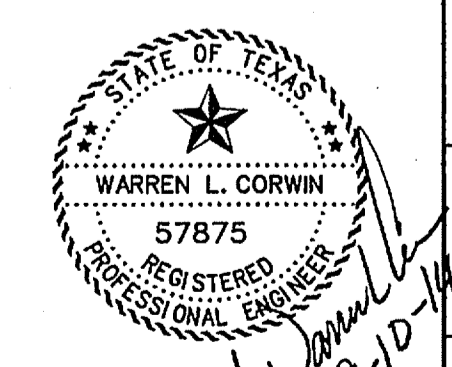


BENCHMARK:
CITY OF ROCKWALL SURVEY MONUMENT ON AN INLET
AT THE NORTHWEST CORNER OF FEATHERSTONE DR. AND
HARVARD DR.
ELEV.- 525.31

ULTIMATE PAVEMENT SECTION - 37' B-B
N.T.S.
*CONCRETE SHALL BE A 6 SACK MIX IF MACHINE
POURED OR 6 1/2 SACK MIX IF HAND POURED



AS-BUILT SEPTEMBER 2015
INFORMATION PROVIDED
BY CONTRACTORS
(NOT FIELD VERIFIED)



The seal appearing on
this document was
authorized by
Warren L. Corwin,
P.E. 57875, on
September 10, 2014

CORWIN ENGINEERING, INC.
200 W. BELMONT, SUITE E
ALLEN, TEXAS 75013 (972)396-1200
TBP E FIRM #5951

DEVELOPMENT PLANS FOR
STONE CREEK
PHASE VI
ROCKWALL, TEXAS

FEATHERSTONE DRIVE

DRAWN BY	DESIGNED BY	CHECKED BY	SHEET NO.
JOB NUMBER	DATE	SCALE: HOR: 1"=40' VER: 1"=4'	7 OF 26
13068	MAY 2014		