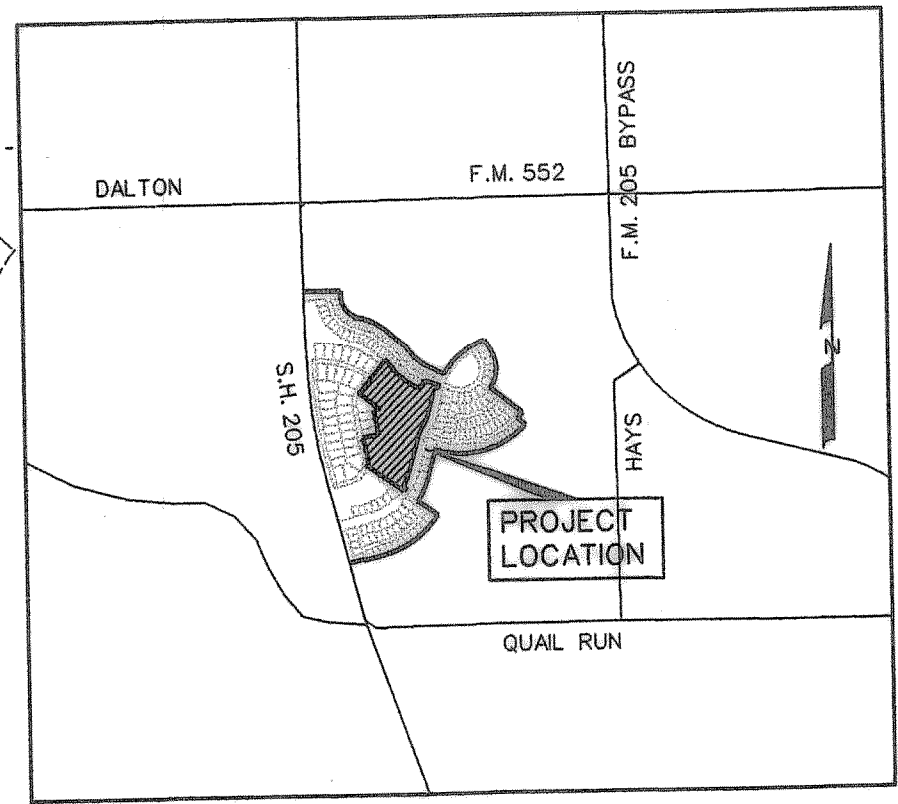
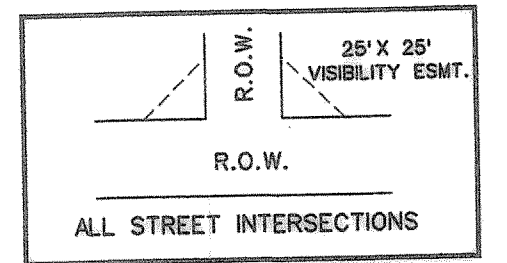


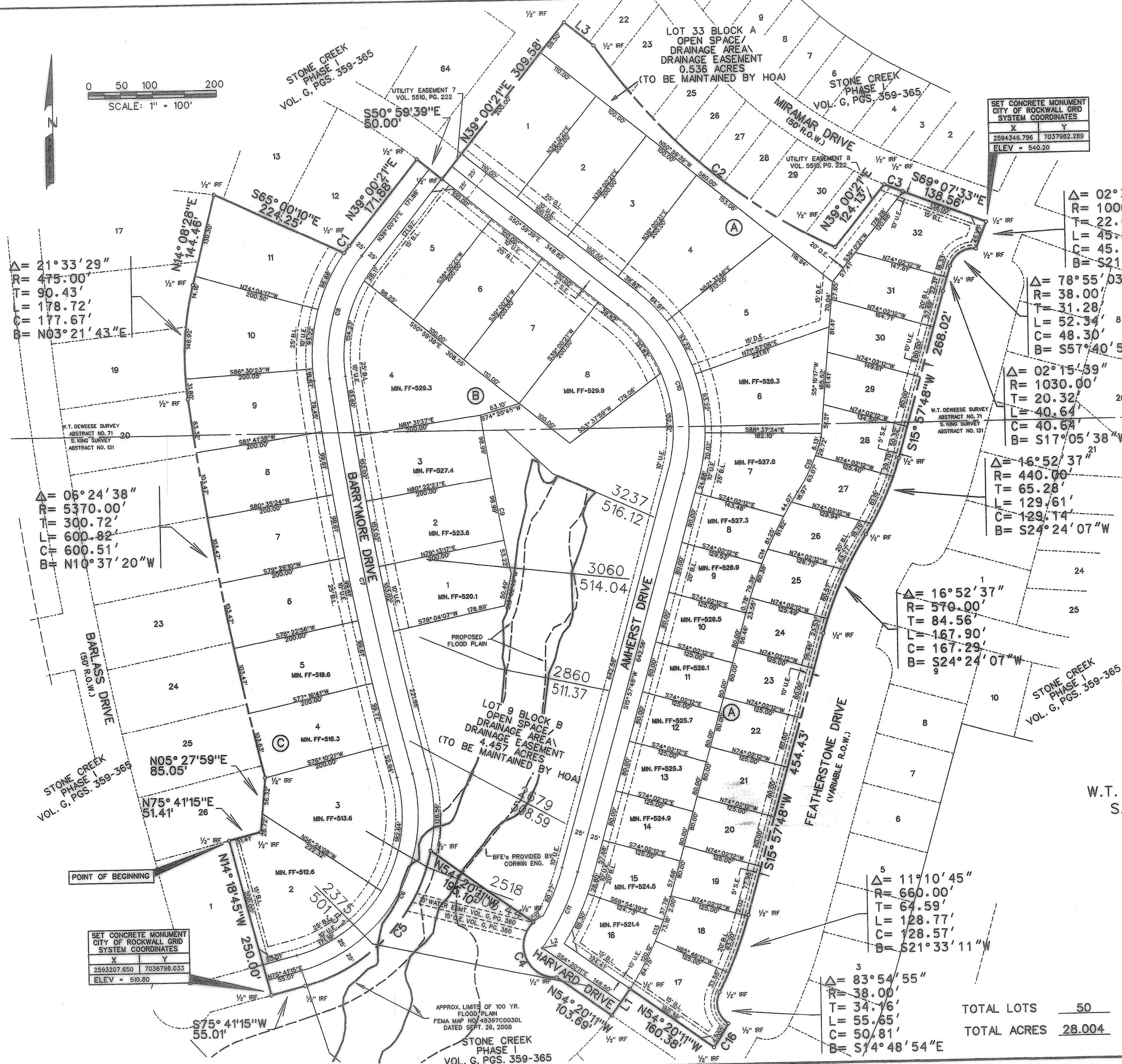
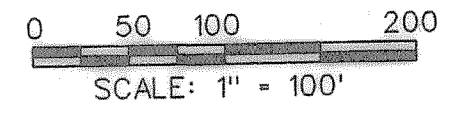
- NOTES**
- Bearing are referenced to Stone Creek Phase I (Vol. G, Pg. 359-365).
 - All lot lines are radial or perpendicular to the street unless otherwise noted by bearing.
 - 1/2" iron rods with "CORWIN ENGR. INC." caps set at all boundary corners, block corners, points of curvature, points of tangency, and angle points in public right-of-way unless otherwise noted.
 - B.L. - Building Line.
U.E. - Utility Easements.
C.M. - Controlling Monument.
D.E. - Drainage Easement
F.F. - Finish Floor
V.A.M.S. - Visibility, Maintenance & Sidewalk Easement
BFE - Base Flood Elevation
S.E. - Sidewalk Easement
 - All open spaces, drainage areas and other common areas shall be maintained by the Homeowners Association.

SET CONCRETE MONUMENT
CITY OF ROCKWALL GRID
SYSTEM COORDINATES

X	Y
2594346.796	7037982.289
ELEV = 540.20	



FINAL PLAT
OF
**STONE CREEK
PHASE III**
OUT OF THE
W.T. DEWESE SURVEY, ABSTRACT NO. 71
S. KING SURVEY, ABSTRACT NO. 131
IN THE
CITY OF ROCKWALL
ROCKWALL COUNTY, TEXAS
OWNERS
STONE CREEK 80/100' POD, LTD.
8214 WESTCHESTER DRIVE, SUITE 710
DALLAS, TEXAS 75219
214-522-4945
PREPARED BY
CORWIN ENGINEERING, INC.
200 W. BELMONT, SUITE E
ALLEN, TEXAS 75013
972-396-1200



$\Delta = 21^{\circ}33'29''$
 $R = 475.00'$
 $T = 90.43'$
 $L = 178.72'$
 $C = 177.67'$
 $B = N03^{\circ}21'43''E$

$\Delta = 02^{\circ}35'38''$
 $R = 1000.00'$
 $T = 22.64'$
 $L = 45.27'$
 $C = 45.27'$
 $B = S21^{\circ}39'30''W$

$\Delta = 78^{\circ}55'03''$
 $R = 38.00'$
 $T = 31.28'$
 $L = 52.34'$
 $C = 48.30'$
 $B = S57^{\circ}40'59''W$

$\Delta = 02^{\circ}15'39''$
 $R = 1030.00'$
 $T = 20.32'$
 $L = 40.64'$
 $C = 40.64'$
 $B = S17^{\circ}05'38''W$

$\Delta = 16^{\circ}52'37''$
 $R = 440.00'$
 $T = 65.28'$
 $L = 129.61'$
 $C = 129.14'$
 $B = S24^{\circ}24'07''W$

$\Delta = 16^{\circ}52'37''$
 $R = 570.00'$
 $T = 84.56'$
 $L = 167.90'$
 $C = 167.29'$
 $B = S24^{\circ}24'07''W$

$\Delta = 11^{\circ}10'45''$
 $R = 660.00'$
 $T = 64.59'$
 $L = 128.77'$
 $C = 128.57'$
 $B = S21^{\circ}33'11''W$

$\Delta = 83^{\circ}54'55''$
 $R = 38.00'$
 $T = 34.16'$
 $L = 55.65'$
 $C = 50.81'$
 $B = S14^{\circ}48'54''E$

TOTAL LOTS 50
TOTAL ACRES 28.004

SET CONCRETE MONUMENT
CITY OF ROCKWALL GRID
SYSTEM COORDINATES

X	Y
2593207.650	7036798.033
ELEV = 510.80	