

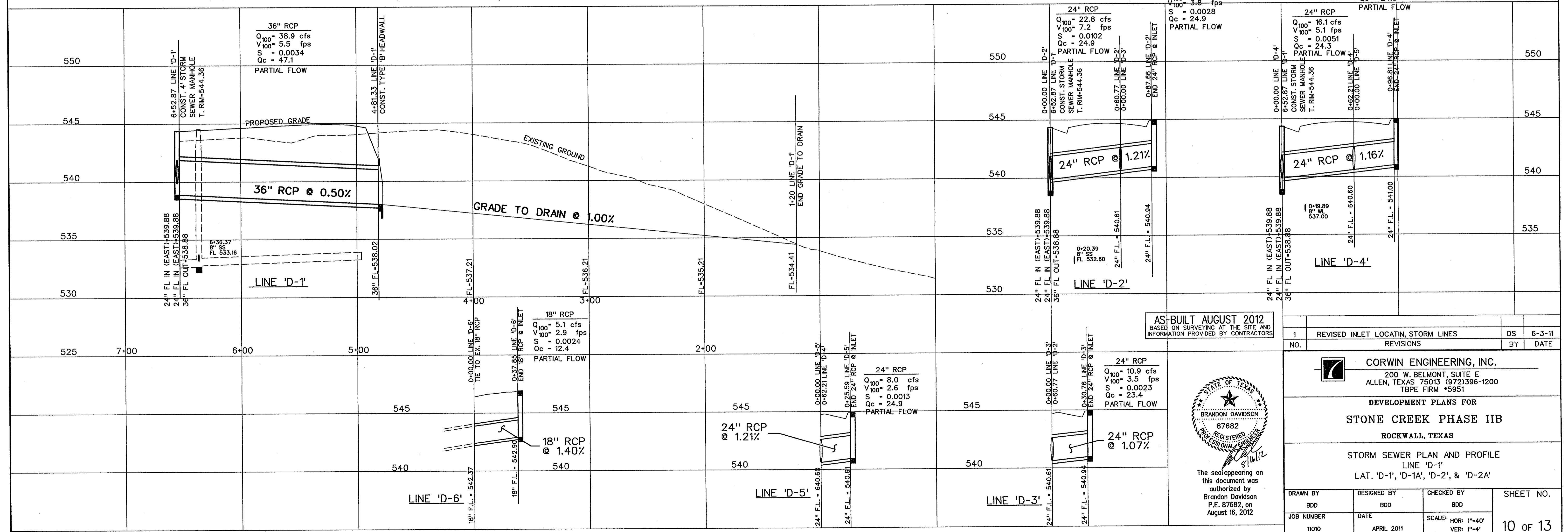
NOTE:  
GRADE TO DRAIN TO BE SEEDED AND CULEX BLANKET SHALL BE INSTALLED.

**TYPICAL GRADE TO DRAIN SECTION**  
N.T.S.

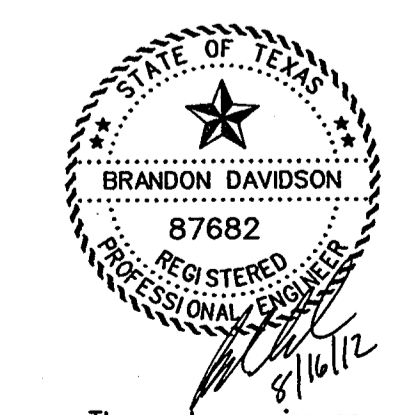
**LEGEND**

- (B) - BLOCK LABEL
- (I) - INLET NUMBER
- (C) - CURVE NUMBER
- (S) - SANITARY SEWER
- (W) - WATER
- PROPOSED STORM SEWER

STORM SEWER CURVE DATA			
CURVE NO.	①	②	③
Δ	18° 52' 42"	42° 23' 58"	45° 57' 44"
R	65.00'	65.00'	65.00'
T	10.81'	25.21'	27.57'
L	21.42'	48.10'	52.14'



AS-BUILT AUGUST 2012  
BASED ON SURVEYING AT THE SITE AND INFORMATION PROVIDED BY CONTRACTORS



The seal appearing on this document was authorized by Brandon Davidson P.E. 87682, on August 16, 2012

NO.	1	REVISED INLET LOCATING, STORM LINES	DS	6-3-11
REVISIONS				
<b>CORNING ENGINEERING, INC.</b> 200 W. BELMONT, SUITE E ALLEN, TEXAS 75013 (972)396-1200 TBE FIRM #5951				
DEVELOPMENT PLANS FOR <b>STONE CREEK PHASE IIB</b> ROCKWALL, TEXAS				
STORM SEWER PLAN AND PROFILE LINE 'D-1' LAT. 'D-1', 'D-1A', 'D-2', & 'D-2A'				
DRAWN BY	DESIGNED BY	CHECKED BY	SHEET NO.	
BDD	BDD	BDD	10 OF 13	
JOB NUMBER	DATE	SCALE	VER:	
11010	APRIL 2011	HOR: 1"=40' VER: 1"=4'		