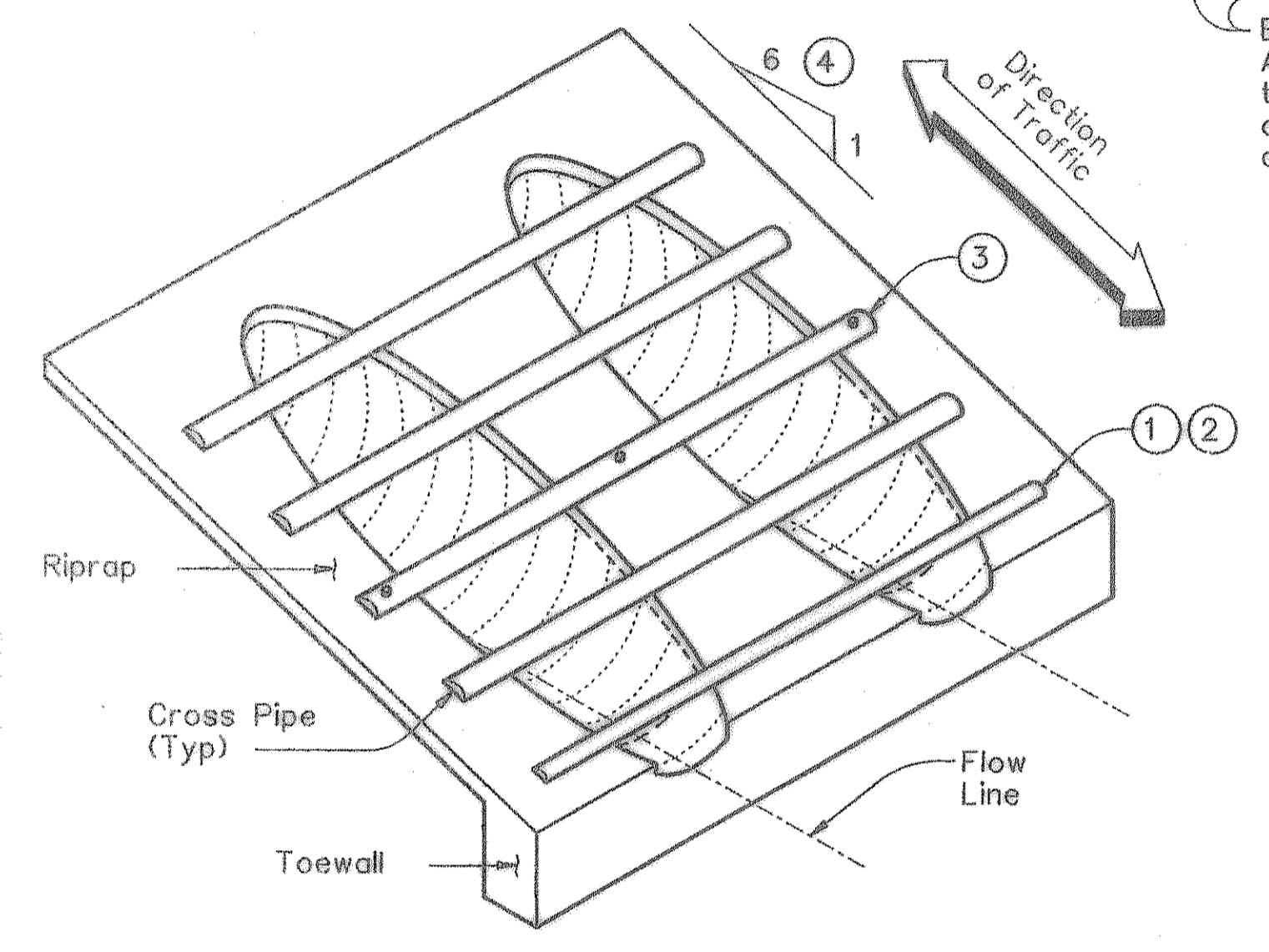
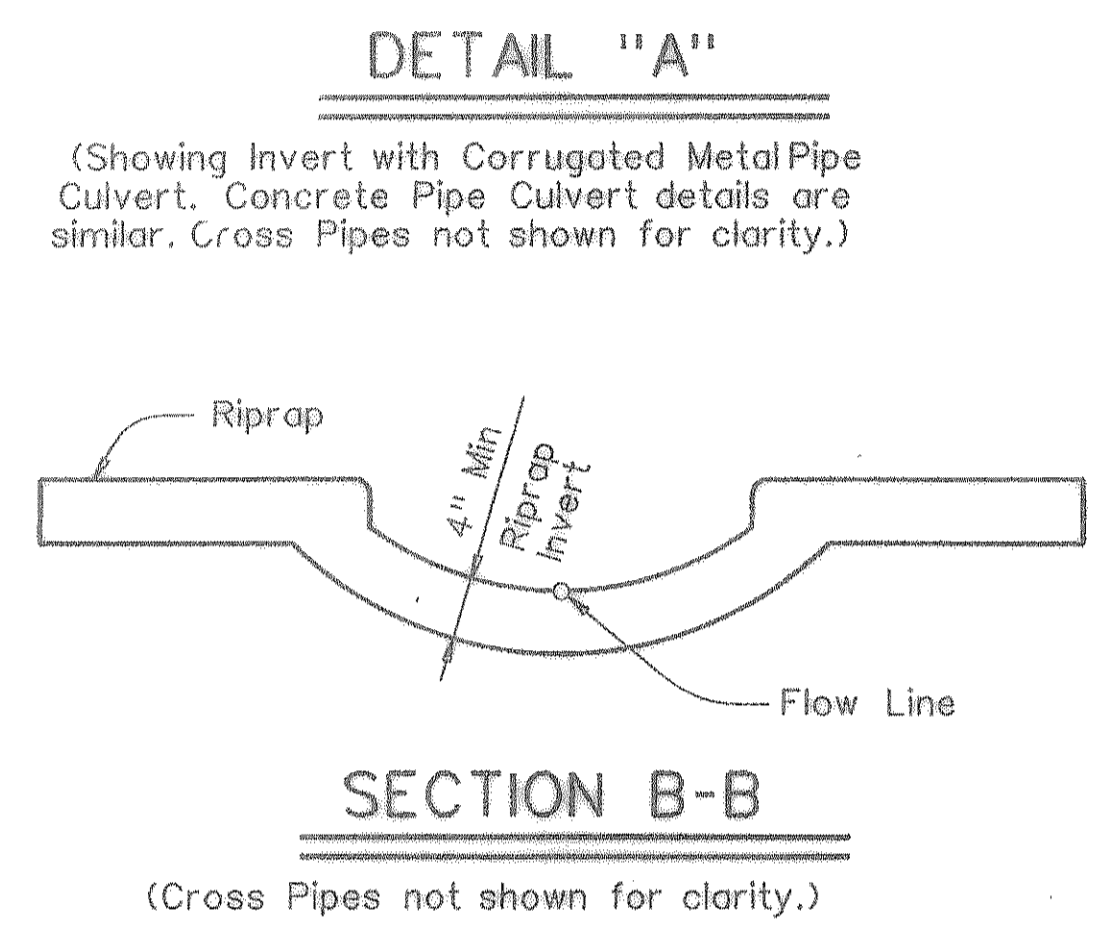
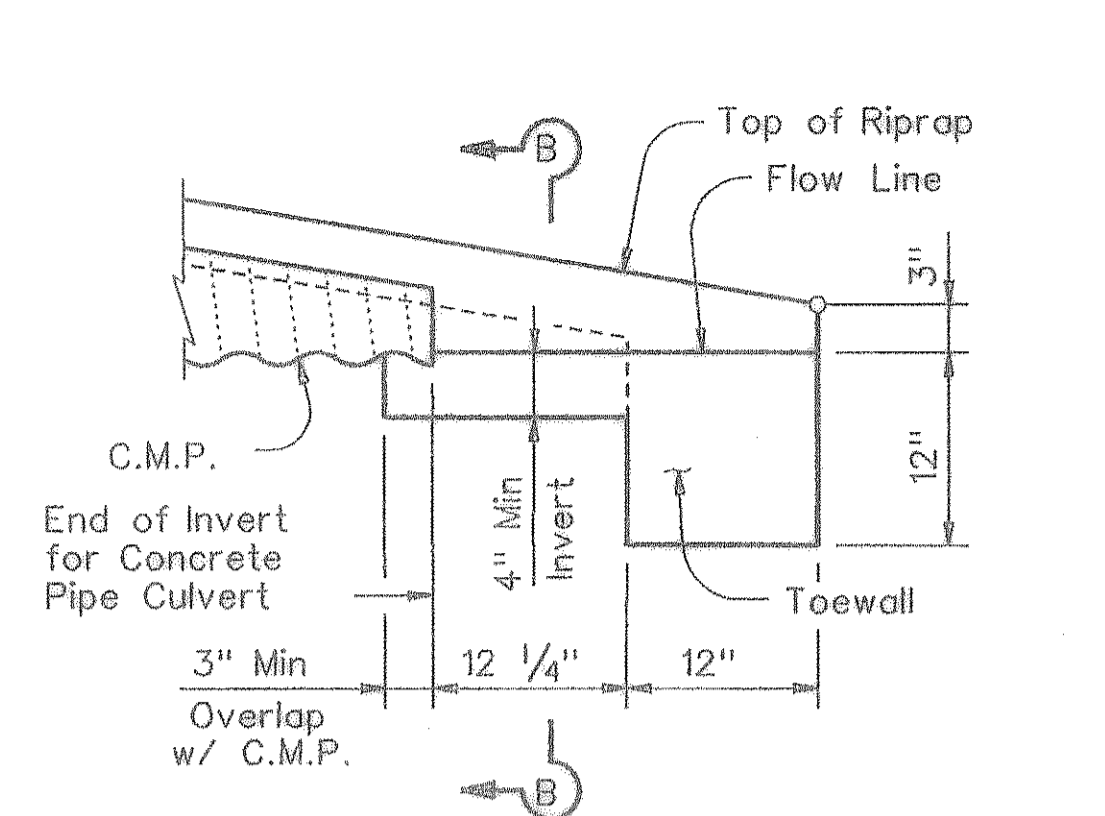
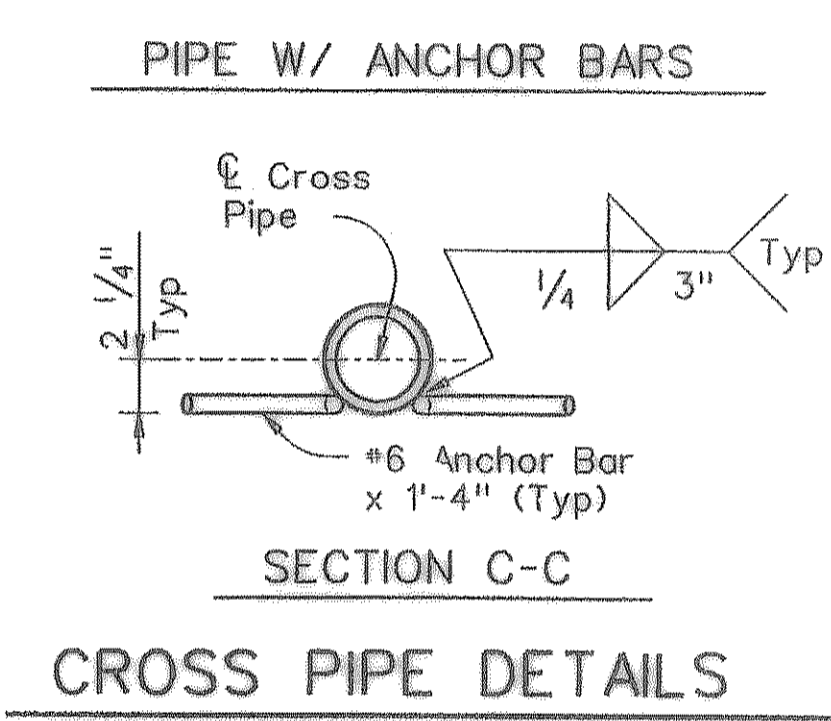
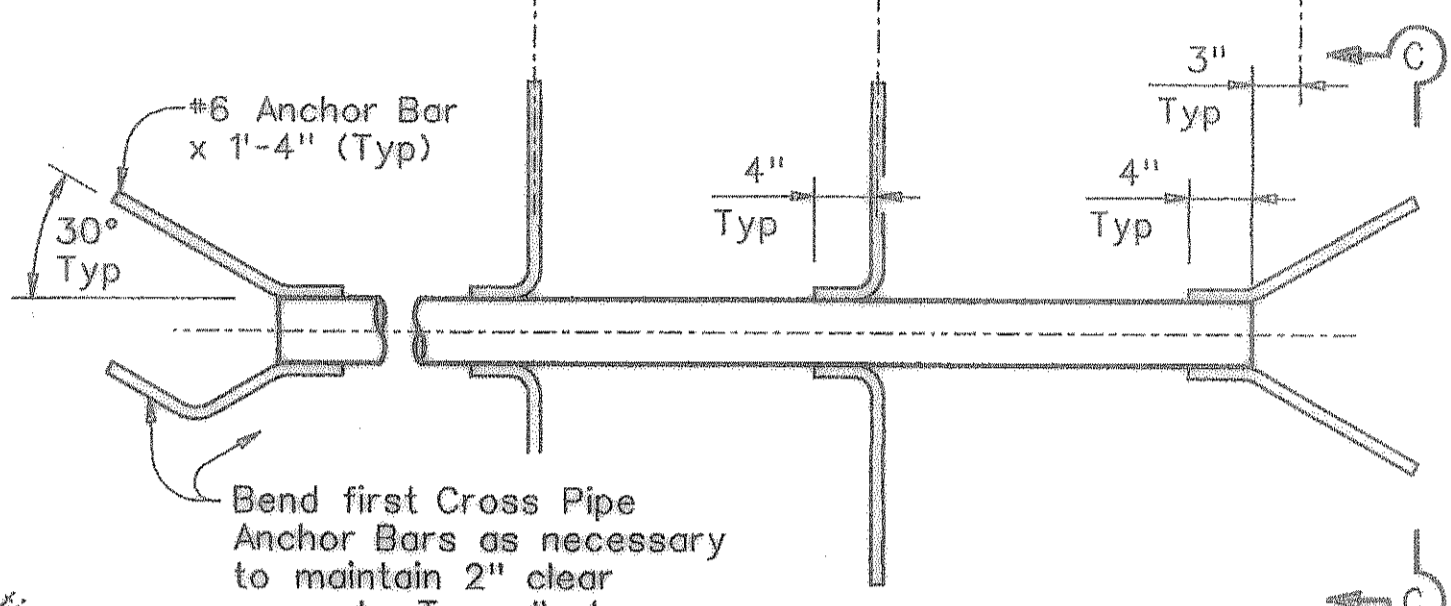
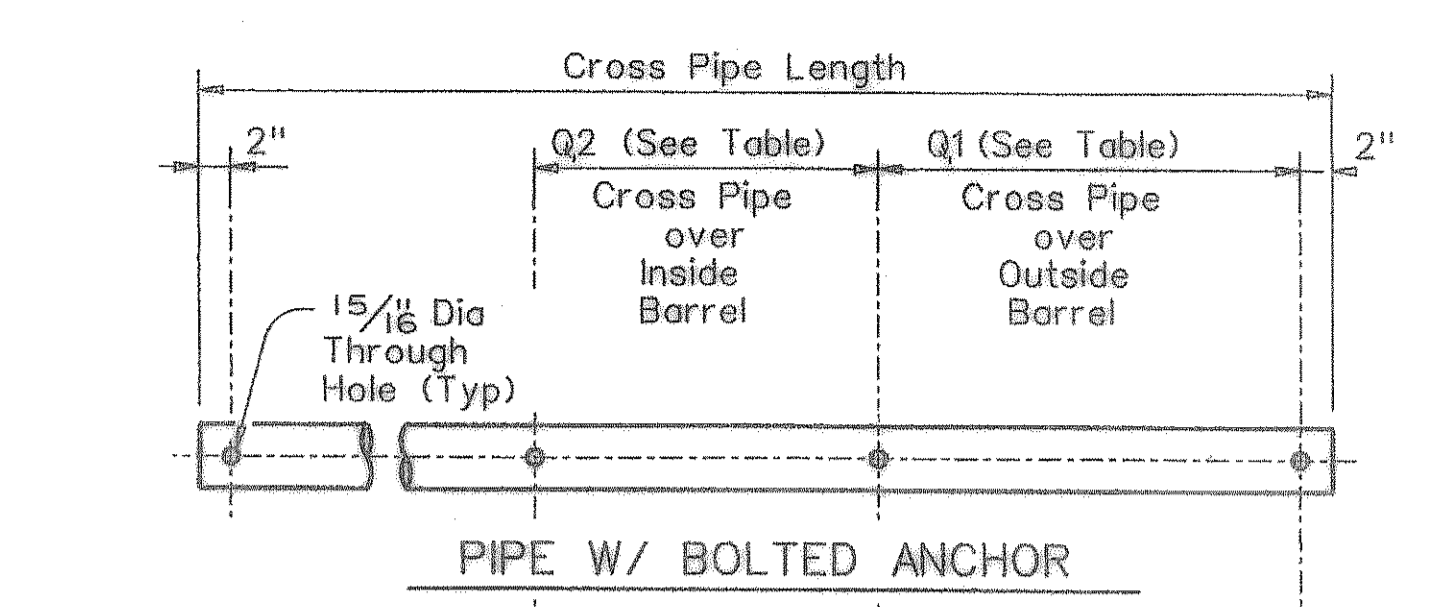
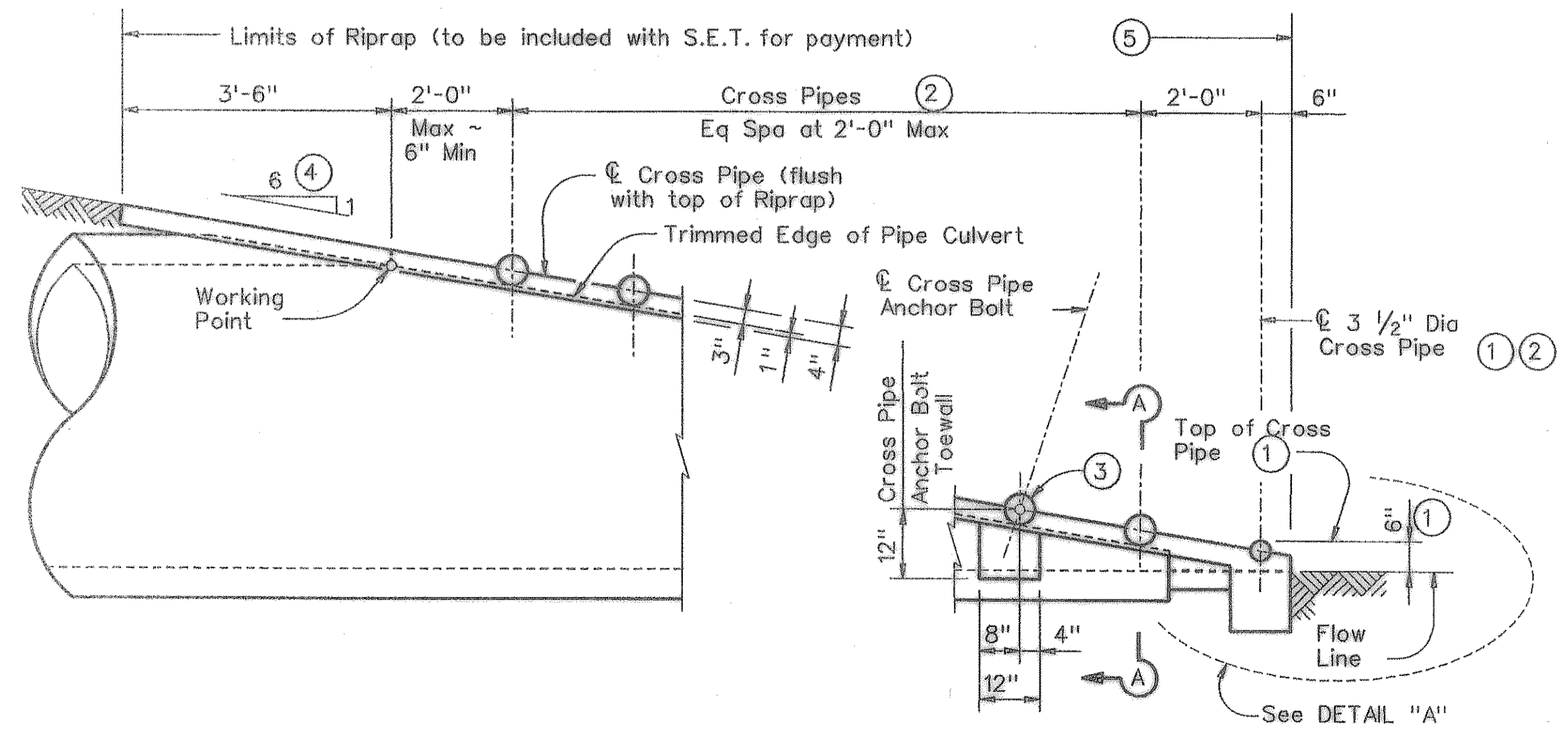


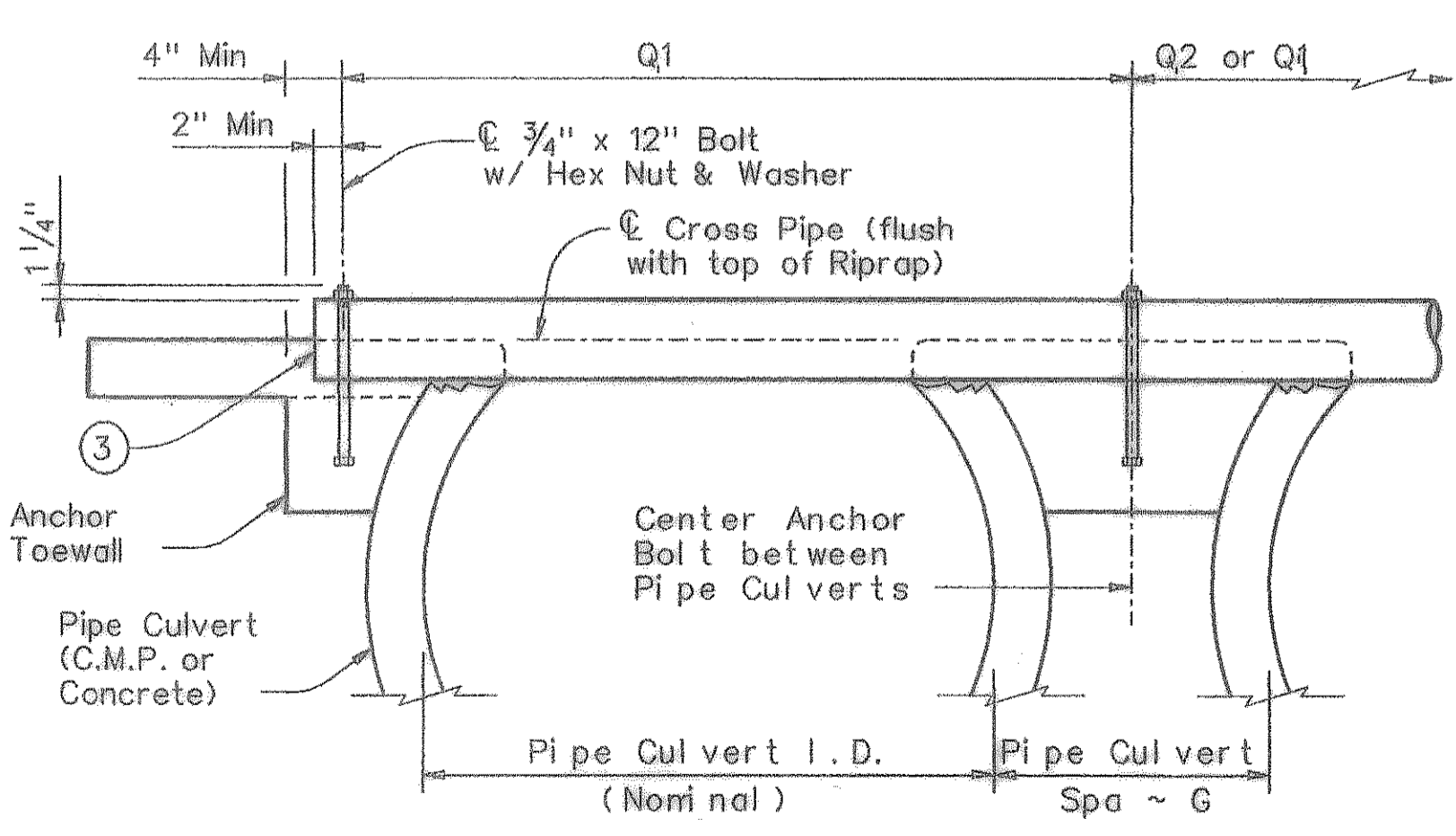
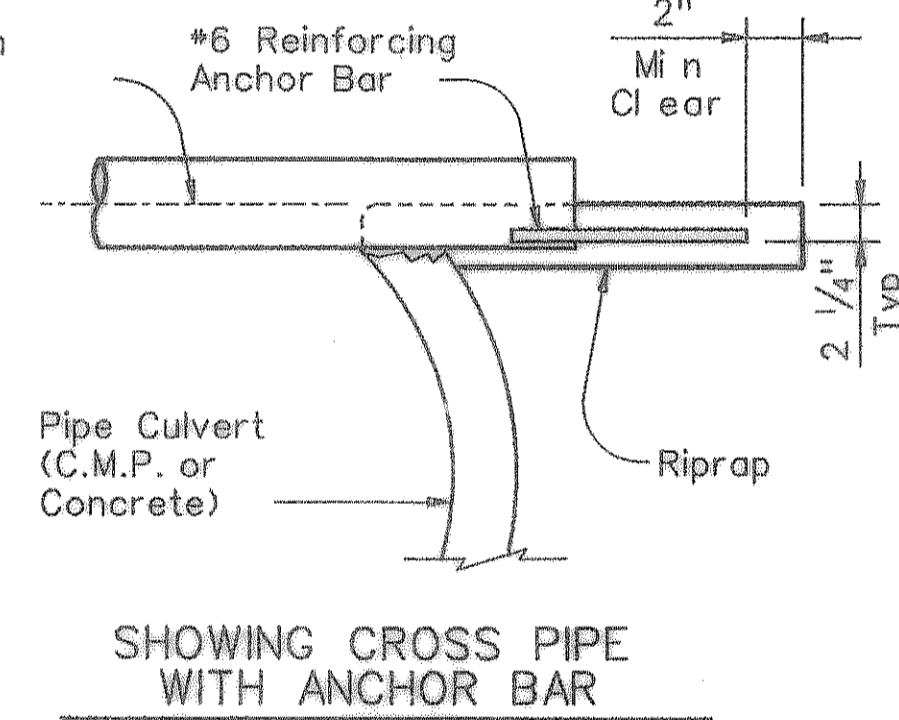
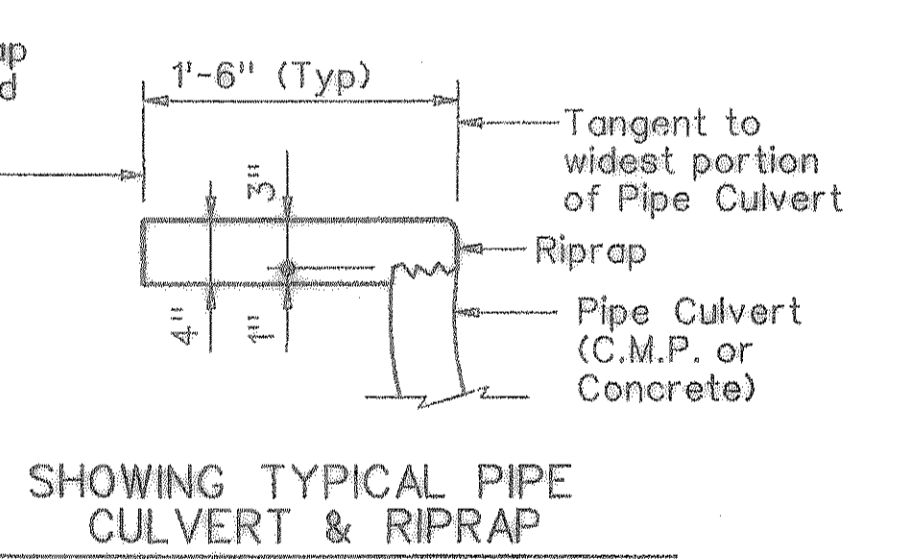
SIDE ELEVATION OF TYPICAL PIPE CULVERT MITER
 (Showing Corrugated Metal Pipe Culvert.)
 (Details at Concrete Pipe Culvert are similar.)



ISOMETRIC VIEW OF TYPICAL INSTALLATION



SIDE ELEVATION OF CAST-IN-PLACE CONCRETE
 (Showing Concrete Pipe Culvert.)
 (Details at Corrugated Metal Pipe Culvert are similar.)



SHOWING CROSS PIPE WITH BOLTED ANCHOR
 SECTION A-A

CROSS PIPE LENGTHS, REQUIRED PIPE SIZES, & RIPRAP QUANTITIES							
Nominal Culvert I.D.	Conc Riprap (CY)	Pipe Culvert Spa ~ G	Single Barrel ~ Q1	Multi-Barrel ~ Q1	Q2	Conditions for use of Cross Pipes	Cross Pipe Size
12"	0.6	9"	N/A	2'- 1"	1'- 9"	3 or more Pipe Culverts	3" Std (3.500" O.D.)
15"	0.7	11"	N/A	2'- 5"	2'- 2"		
18"	0.8	1'- 2"	N/A	2'-10"	2'- 8"		
21"	0.9	1'- 4"	N/A	3'- 2"	3'- 1"	3 or more Pipe Culverts	3 1/2" Std (4.000" O.D.)
24"	0.9	1'- 7"	N/A	3'- 6"	3'- 7"		
27"	1.0	1'- 8"	N/A	3'-10"	3'-11"	2 or more Pipe Culverts	3 1/2" Std (4.000" O.D.)
30"	1.1	1'-10"	N/A	4'- 2"	4'- 4"		
33"	1.2	1'-11"	4'- 2"	4'- 5"	4'- 8"	All Pipe Culverts	4" Std (4.500" O.D.)
36"	1.3	2'- 1"	4'- 5"	4'- 9"	5'- 1"		
42"	1.5	2'- 4"	4'-11"	5'- 5"	5'-10"	All Pipe Culverts	5" Std (5.563" O.D.)
48"	1.7	2'- 7"	5'- 5"	6'- 0"	6'- 7"		
54"	2.0	3'- 0"	5'-11"	6'- 9"	7'- 6"	All Pipe Culverts	5" Std (5.563" O.D.)
60"	2.2	3'- 3"	6'- 5"	7'- 4"	8'- 3"		
66"	2.4	3'- 3"	6'-11"	7'-10"	8'- 9"	All Pipe Culverts	5" Std (5.563" O.D.)
72"	2.7	3'- 4"	7'- 5"	8'- 5"	9'- 4"		

- 1 The proper installation of the first Cross Pipe is critical for vehicle safety. The top of the first Cross Pipe must be placed at no more than 6" above the flow line.
- 2 Size of Cross Pipes, except the first bottom pipe, shall be as shown in the PIPE SIZE table. The first bottom pipe shall be 3 1/2" Standard Pipe (4" O.D.).
- 3 The third Cross Pipe from the bottom of the Culvert shall always be installed using a bolted connection. Care shall be taken to ensure that Riprap concrete does not flow into the Cross Pipe so as to permit disassembly of the bolted connection to allow cleanout access. At the Contractor's option, all other Cross Pipes may also be installed using the bolted connection details.
- 4 Match Cross Slope as shown elsewhere in the plans. Cross Slope of 6:1 or flatter is required for vehicle safety.
- 5 Riprap placed beyond the limits shown will be paid as Concrete Riprap in accordance with Item 432, "Riprap".
- 6 Quantities shown are for one end of one reinforced Concrete Pipe Culvert. For multiple pipe culverts or for Corrugated Metal Pipe Culverts, quantities will need to be adjusted. Riprap quantities are for Contractor's information only.

GENERAL NOTES:

Cross Pipes are designed for a traversing load of 10,000 pounds at yield as recommended by Research Report 280-2F, "Safety Treatment of of Roadside Parallel-Drainage Structures", Texas Transportation Institute, March 1981.
 Safety End Treatments shown herein are intended for use in those installations where out of control vehicles are likely to traverse the openings approximately perpendicular to the Cross Pipes.
 Riprap and all necessary inverts shall be Concrete Riprap conforming to the requirements of Item 432, "Riprap".
 Payment for riprap and toewall is included in the Price Bid for each Safety End Treatment.
 Cross Pipes shall conform to the requirements of ASTM A53 (Type E or S, Grade B), ASTM A500 (Grade B), or API 5LX52.
 Bolts and nuts shall conform to ASTM A307.
 All steel components, except concrete reinforcing, shall be galvanized after fabrication. Galvanizing damaged during transport or construction shall be repaired in accordance with the specifications.

DISCLAIMER: The use of this standard is governed by the "Texas Engineering Practice Act". It is not to be used for any purpose other than that intended by the Texas Department of Transportation and is not to be used for any other project or for any other format or for incorrect results or damages resulting from its use.

LEVELS (UNREVISED)

ACC:	

Texas Department of Transportation
 Bridge Division

SAFETY END TREATMENT FOR 12" DIA TO 72" DIA PIPE CULVERTS TYPE II - PARALLEL DRAINAGE

SETP-PD

FILE: setpdse.dgn	DN: GAF	CK: CAT	DW: JRP	CR: GAF
© TxDOT May 2005	DISTRICT	FEDERAL AID PROJECT		SHEET
REVISIONS				
COUNTY	CONTROL	SECT	JOB	HIGHWAY