

**NOTE:**  
THE PURPOSE OF THIS REPLAT IS TO CORRECT SURVEYER ERROR ON THE PREVIOUSLY FILED FINAL PLAT AND ADD ONE LOT TO BLOCK K.

**NOTES:**

- Bearing are referenced to 392.538 acre tract (Vol. 64, Pg.22).
- All lot lines are radial or perpendicular to the street unless otherwise noted by bearing.
- 1/2" iron rods with "CORWIN ENGR. INC." caps set at all boundary corners, block corners, points of curvature, and other points in public right-of-way unless otherwise noted.
- B.L. - Building Line.  
U.E. - Utility Easements.  
C.A. - Controlling Monument.  
V.A.M.S. - Visibility, Maintenance & Sidewalk Easement.  
B.F.E. - Base Flood Elevation  
S.T. - Street name change
- All open spaces, drainage areas and other common areas shall be maintained by the Homeowners Association.

SEE SHEET 4 OF 7 FOR CURVE AND LINE TABLES

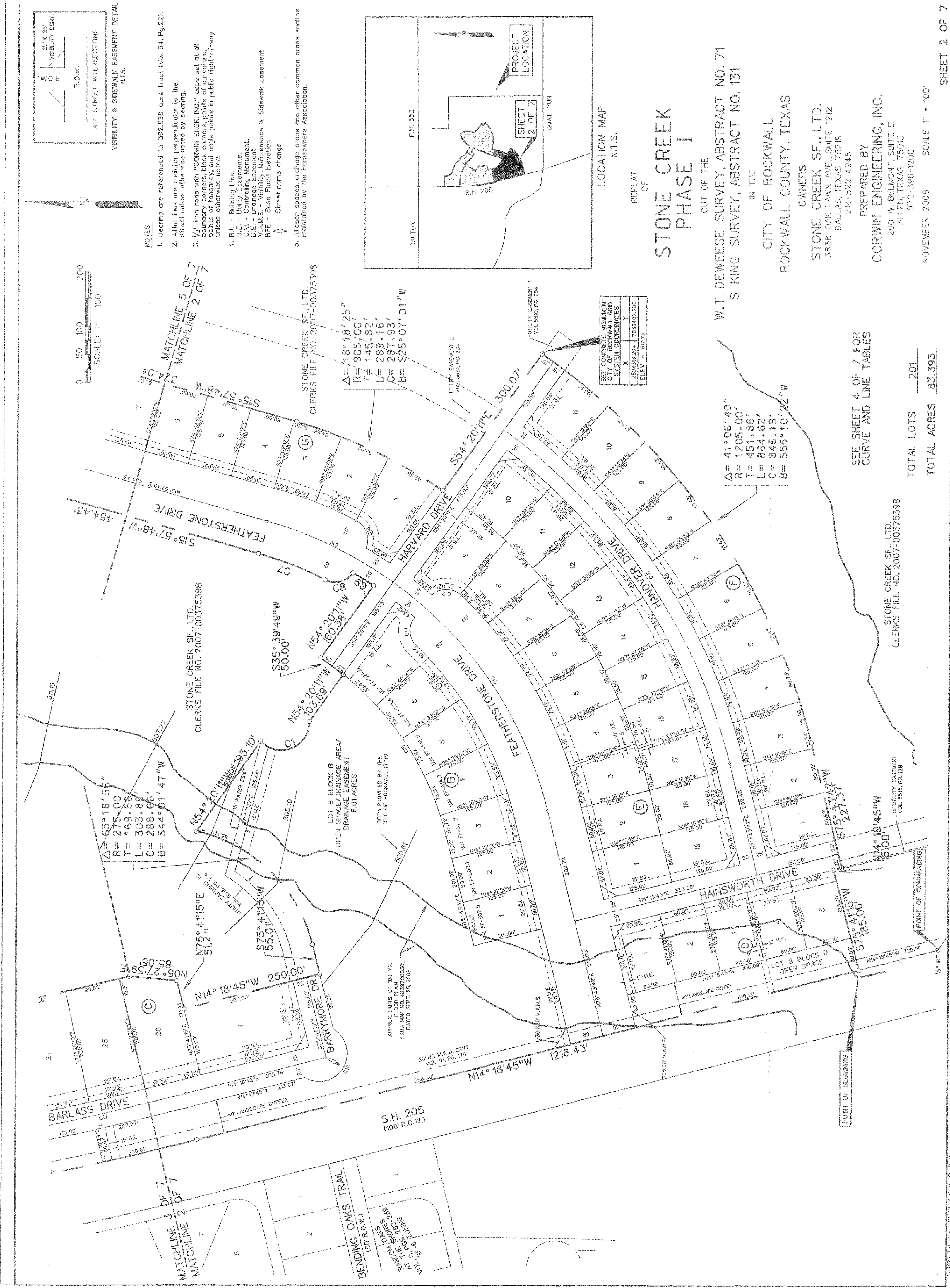
REPLAT OF  
**STONE CREEK PHASE I**  
OUT OF THE  
W.T. DEWEESE SURVEY, ABSTRACT NO. 71  
S. KING SURVEY, ABSTRACT NO. 131  
IN THE  
CITY OF ROCKWALL  
ROCKWALL COUNTY, TEXAS

**OWNERS**  
STONE CREEK SF., LTD.  
3838 OAK LAWN AVE., SUITE 1212  
DALLAS, TEXAS 75219  
214-522-4945

**PREPARED BY**  
CORWIN ENGINEERING, INC.  
200 W. BELMONT, SUITE E  
ALLEN, TEXAS 75013  
972-396-1200

NOVEMBER 2008 SCALE 1" = 100'

SHEET 3 OF 7  
**G-361**



**NOTE:**  
THE PURPOSE OF THIS REPLAT IS TO CORRECT SURVEYER ERROR ON THE PREVIOUSLY FILED FINAL PLAT AND ADD ONE LOT TO BLOCK K.

**NOTES:**

- Bearing are referenced to 392.538 acre tract (Vol. 64, Pg.22).
- All lot lines are radial or perpendicular to the street unless otherwise noted by bearing.
- 1/2" iron rods with "CORWIN ENGR. INC." caps set at all points of tangency, and angle points in public right-of-way unless otherwise noted.
- B.L. - Building Line.  
U.E. - Utility Easements.  
C.A. - Controlling Monument.  
V.A.M.S. - Visibility, Maintenance & Sidewalk Easement  
B.F.E. - Base Flood Elevation  
S.T. - Street name change
- All open spaces, drainage areas and other common areas shall be maintained by the Homeowners Association.

SEE SHEET 4 OF 7 FOR CURVE AND LINE TABLES

REPLAT OF  
**STONE CREEK PHASE I**  
OUT OF THE  
W.T. DEWEESE SURVEY, ABSTRACT NO. 71  
S. KING SURVEY, ABSTRACT NO. 131  
IN THE  
CITY OF ROCKWALL  
ROCKWALL COUNTY, TEXAS

**OWNERS**  
STONE CREEK SF., LTD.  
3838 OAK LAWN AVE., SUITE 1212  
DALLAS, TEXAS 75219  
214-522-4945

**PREPARED BY**  
CORWIN ENGINEERING, INC.  
200 W. BELMONT, SUITE E  
ALLEN, TEXAS 75013  
972-396-1200

NOVEMBER 2008 SCALE 1" = 100'

SHEET 2 OF 7  
**G-360**