

NOTE: THE PURPOSE OF THIS REPLAT IS TO CORRECT A SURVEYING ERROR ON THE ABOVE DESCRIBED FINAL PLAT AND ADD ONE LOT TO BLOCK 12.

REPLAT OF  
**STONE CREEK PHASE I**

OUT OF THE  
 W.T. DEWEESE SURVEY, ABSTRACT NO. 71  
 S. KING SURVEY, ABSTRACT NO. 131

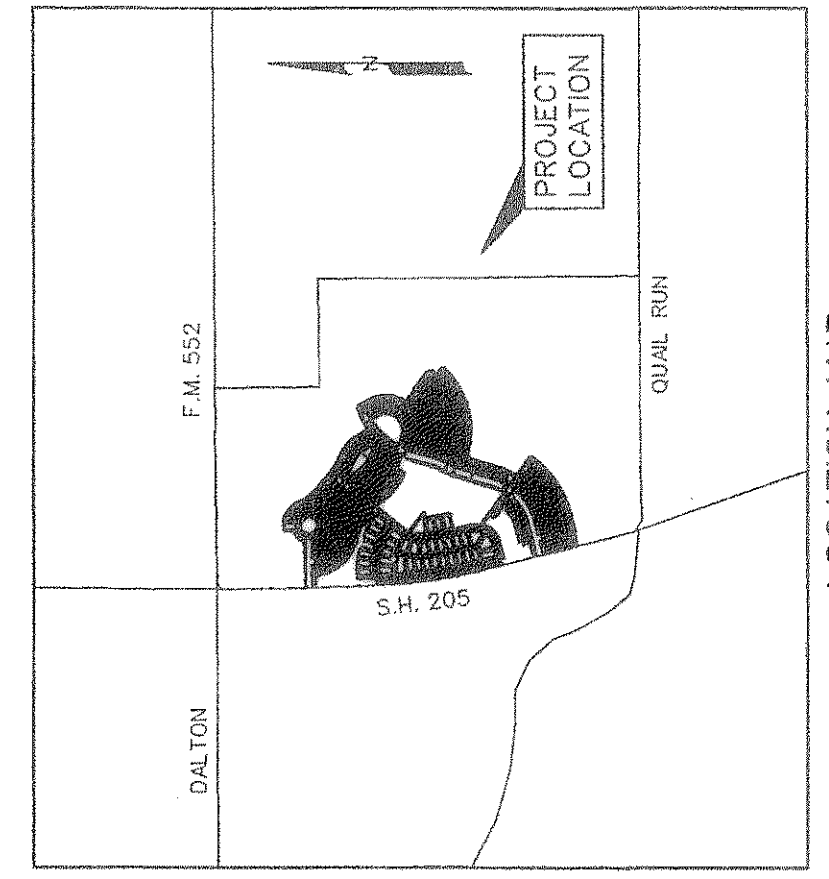
FILED FOR RECORD  
 ROCKWALL COUNTY CLERK  
 09 DEC 16 2:11:12

LISA CUISTANI  
 COUNTY CLERK  
 DEPUTY  
 CITY OF ROCKWALL  
 ROCKWALL COUNTY, TEXAS

OWNERS  
 STONE CREEK SF., LTD.  
 3838 OAK LAWN AVE., SUITE 1212  
 DALLAS, TEXAS 75219  
 214-522-4945

PREPARED BY  
 CORWIN ENGINEERING, INC.  
 200 W. BELMONT, SUITE E  
 ALLEN, TEXAS 75013  
 972-396-1200

OCTOBER 2008 SCALE: 1" = 100'



LOCATION MAP  
 N.T.S.

0000250141.dwg 12/09/2008 9:52:27 AM