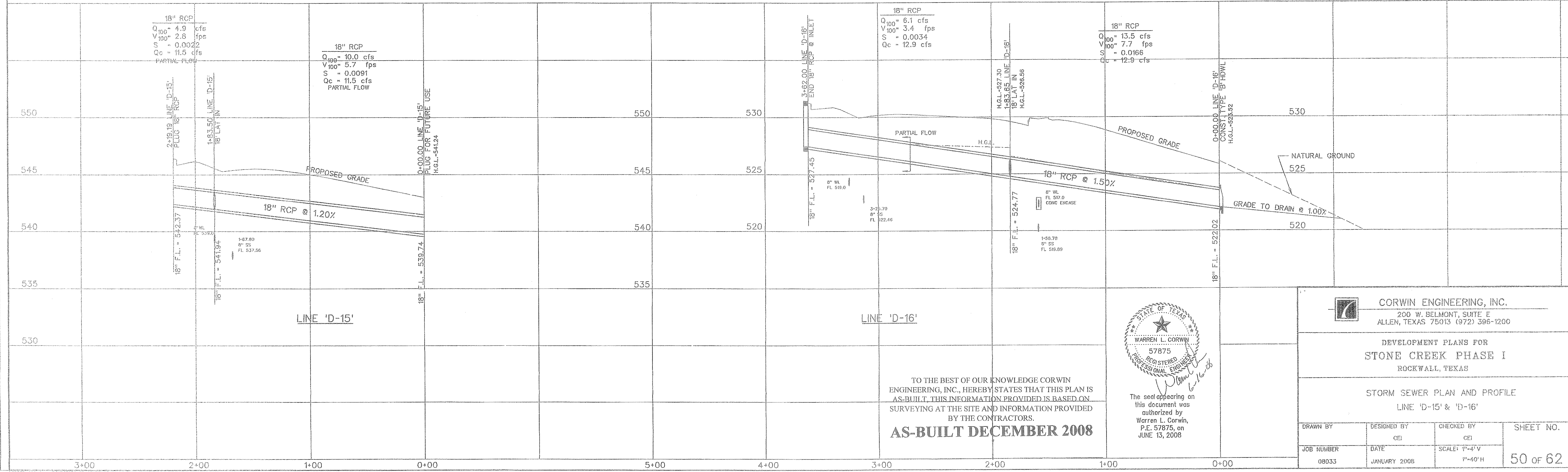
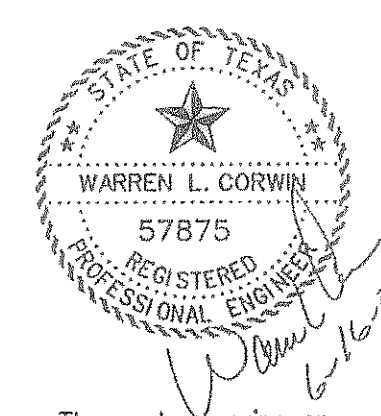


| CURVE NO. | CURVE DATA | | | | | |
|-----------|------------|------------|------------|------------|------------|------------|
| | ① | ② | ③ | ④ | ⑤ | ⑥ |
| Δ | 07° 26'11" | 41° 07'49" | 12° 41'41" | 96° 54'23" | 04° 03'22" | 48° 47'54" |
| R | 970.00' | 65.00' | 250.00' | 65.00' | 885.00' | 65.00' |
| T | 63.04' | 24.38' | 27.81' | 73.35' | 31.34' | 29.48' |
| L | 125.90' | 46.66' | 55.39' | 109.94' | 62.65' | 55.36' |



TO THE BEST OF OUR KNOWLEDGE CORWIN ENGINEERING, INC., HEREBY STATES THAT THIS PLAN IS AS-BUILT. THIS INFORMATION PROVIDED IS BASED ON SURVEYING AT THE SITE AND INFORMATION PROVIDED BY THE CONTRACTORS.

AS-BUILT DECEMBER 2008



The seal appearing on this document was authorized by Warren L. Corwin, P.E. 57875, on JUNE 13, 2008

CORWIN ENGINEERING, INC.
 200 W. BELMONT, SUITE E
 ALLEN, TEXAS 75013 (972) 396-1200

DEVELOPMENT PLANS FOR
STONE CREEK PHASE I
 ROCKWALL, TEXAS

STORM SEWER PLAN AND PROFILE
 LINE 'D-15' & 'D-16'

| | | | |
|------------|--------------|----------------------------|-----------|
| DRAWN BY | DESIGNED BY | CHECKED BY | SHEET NO. |
| 08033 | CEJ | CEJ | |
| JOB NUMBER | DATE | SCALE: 1"=4'-V 1"=40'-H | 50 OF 62 |
| 08033 | JANUARY 2008 | | |