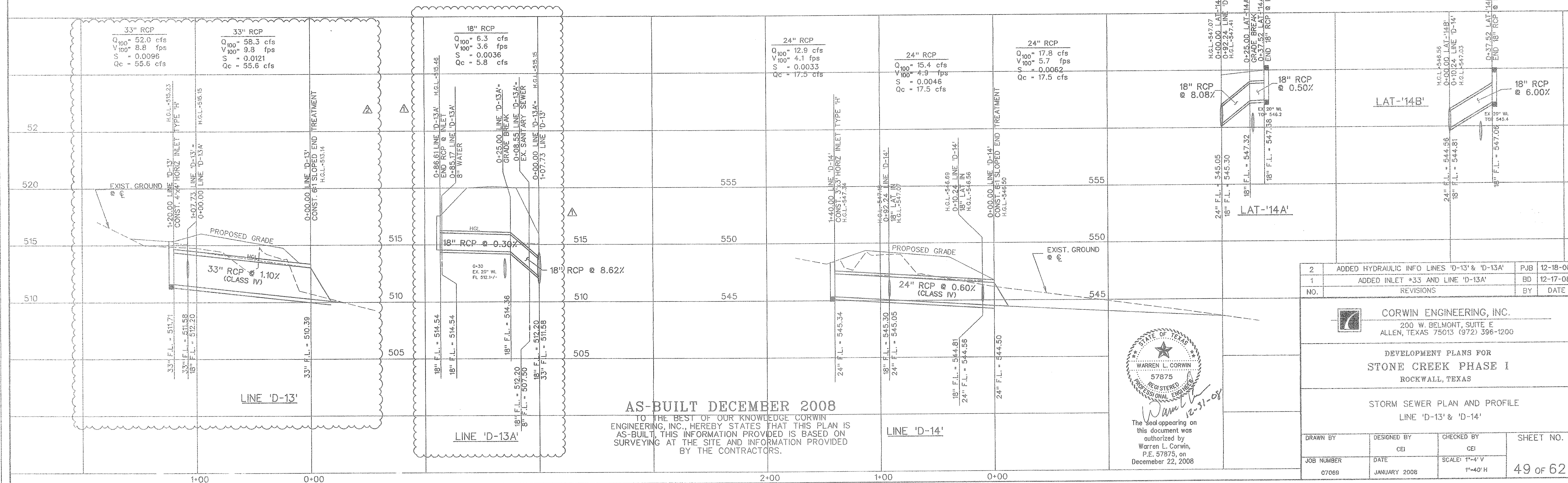
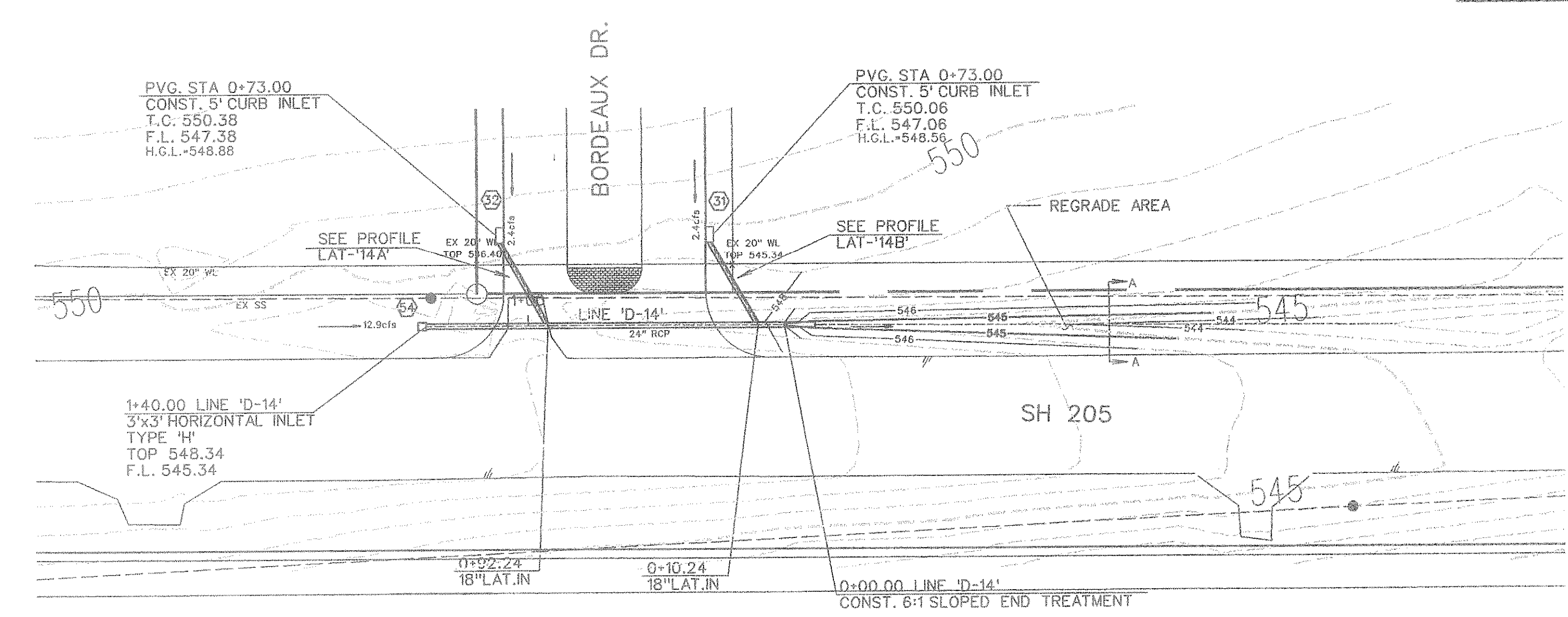
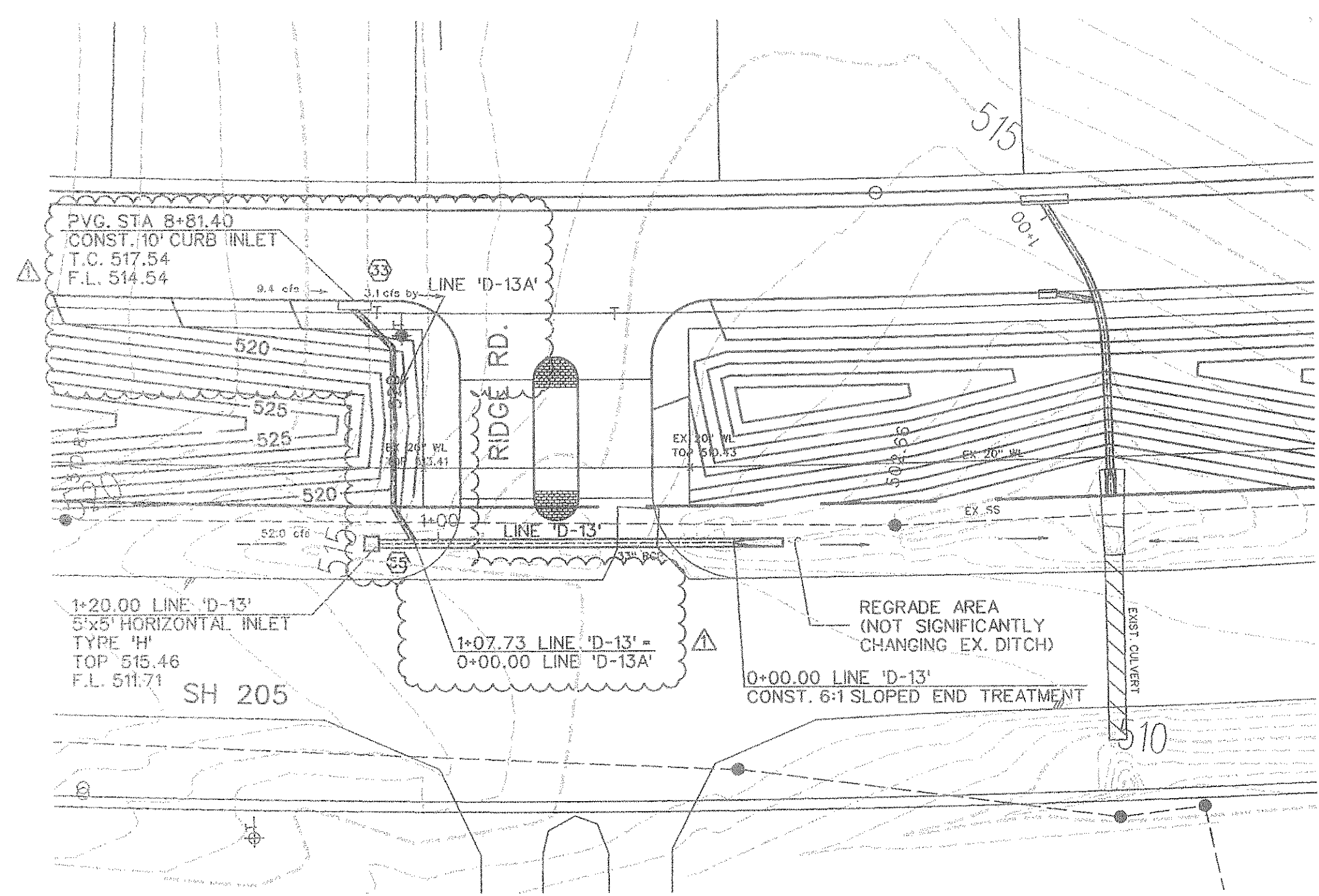
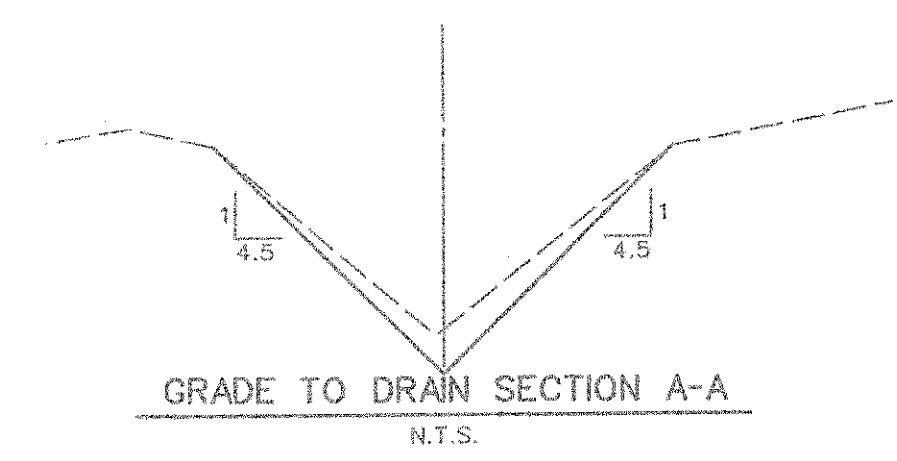
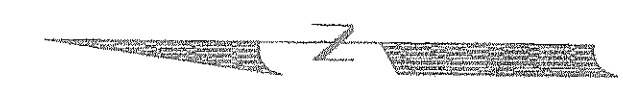
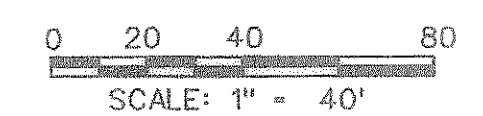
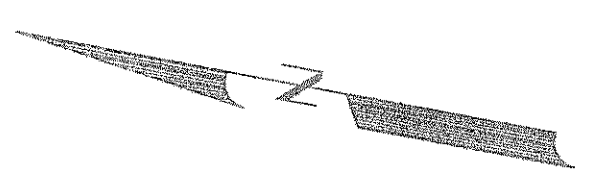
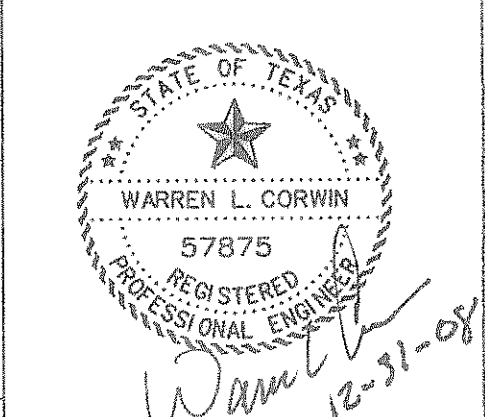


Q₁₀₀ = 17.7 cfs
 S = -0.50%
 V = 2.52 fps
 d = -1.25 ft



AS-BUILT DECEMBER 2008
 TO THE BEST OF OUR KNOWLEDGE CORWIN ENGINEERING, INC. HEREBY STATES THAT THIS PLAN IS AS-BUILT, THIS INFORMATION PROVIDED IS BASED ON SURVEYING AT THE SITE AND INFORMATION PROVIDED BY THE CONTRACTORS.



The seal appearing on this document was authorized by Warren L. Corwin, P.E. 57875, on December 22, 2008

2	ADDED HYDRAULIC INFO LINES 'D-13' & 'D-13A'	PJB	12-18-08
1	ADDED INLET #33 AND LINE 'D-13A'	BD	12-17-08
NO.	REVISIONS	BY	DATE

CORWIN ENGINEERING, INC.
 200 W. BELMONT, SUITE E
 ALLEN, TEXAS 75013 (972) 396-1200

DEVELOPMENT PLANS FOR
STONE CREEK PHASE I
 ROCKWALL, TEXAS

STORM SEWER PLAN AND PROFILE
 LINE 'D-13' & 'D-14'

DRAWN BY	DESIGNED BY	CHECKED BY	SHEET NO.
	CEI	CEI	49 of 62
JOB NUMBER	DATE	SCALE: 1"=4' V 1"=40' H	
07069	JANUARY 2008		