

CURVE DATA			
CURVE NO.	①	②	③
Δ	45° 00' 00"	25° 49' 36"	0° 00' 00"
R	65.00'	65.00'	1'
T	26.92'	14.90'	1'
L	51.05'	29.30'	1'

27" RCP
 Q₁₀₀ = 25.2 cfs
 V₁₀₀ = 6.3 fps
 S = 0.0066
 Q_c = 36.7 cfs
 PARTIAL FLOW

18" RCP
 Q₁₀₀ = 5.2 cfs
 V₁₀₀ = 2.0 fps
 S = 0.0024
 Q_c = 10.6 cfs
 PARTIAL FLOW

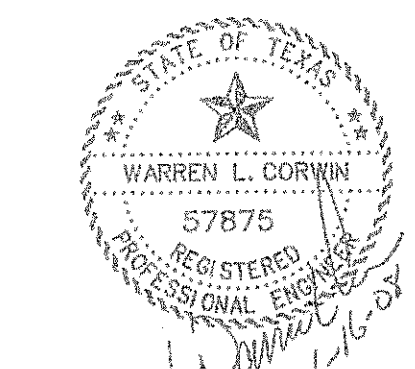
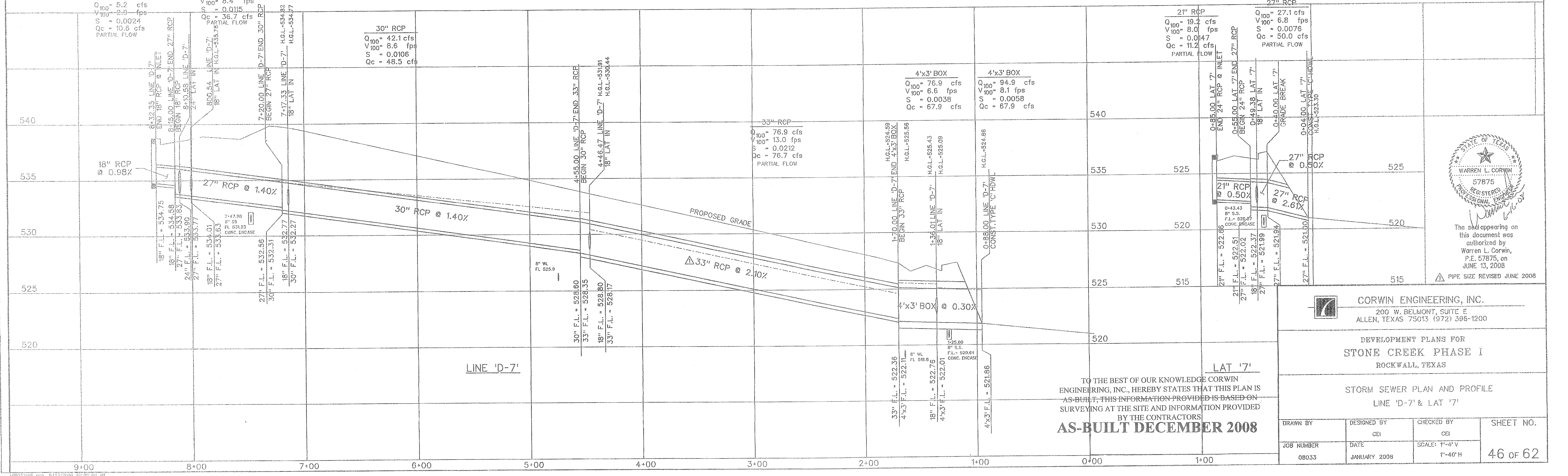
30" RCP
 Q₁₀₀ = 42.1 cfs
 V₁₀₀ = 8.6 fps
 S = 0.0106
 Q_c = 48.5 cfs

21" RCP
 Q₁₀₀ = 19.2 cfs
 V₁₀₀ = 8.0 fps
 S = 0.0147
 Q_c = 11.2 cfs
 PARTIAL FLOW

27" RCP
 Q₁₀₀ = 27.1 cfs
 V₁₀₀ = 6.8 fps
 S = 0.0076
 Q_c = 50.0 cfs
 PARTIAL FLOW

4'x3' BOX
 Q₁₀₀ = 76.9 cfs
 V₁₀₀ = 6.6 fps
 S = 0.0038
 Q_c = 67.9 cfs

4'x3' BOX
 Q₁₀₀ = 94.9 cfs
 V₁₀₀ = 8.1 fps
 S = 0.0058
 Q_c = 67.9 cfs



The seal appearing on this document was authorized by Warren L. Corwin, P.E. 57875, on JUNE 13, 2008
 PIPE SIZE REVISED JUNE 2008

CORWIN ENGINEERING, INC.
 200 W. BELMONT, SUITE E
 ALLEN, TEXAS 75013 (972) 396-1200

DEVELOPMENT PLANS FOR
STONE CREEK PHASE I
 ROCKWALL, TEXAS

STORM SEWER PLAN AND PROFILE
 LINE 'D-7' & LAT '7'

TO THE BEST OF OUR KNOWLEDGE CORWIN ENGINEERING, INC., HEREBY STATES THAT THIS PLAN IS AS-BUILT, THIS INFORMATION PROVIDED IS BASED ON SURVEYING AT THE SITE AND INFORMATION PROVIDED BY THE CONTRACTORS
AS-BUILT DECEMBER 2008

DRAWN BY	DESIGNED BY	CHECKED BY	SHEET NO.
	CEI	CEI	46 OF 62
JOB NUMBER	DATE	SCALE:	
08033	JANUARY 2008	1"=4'-V 1"=40'-H	