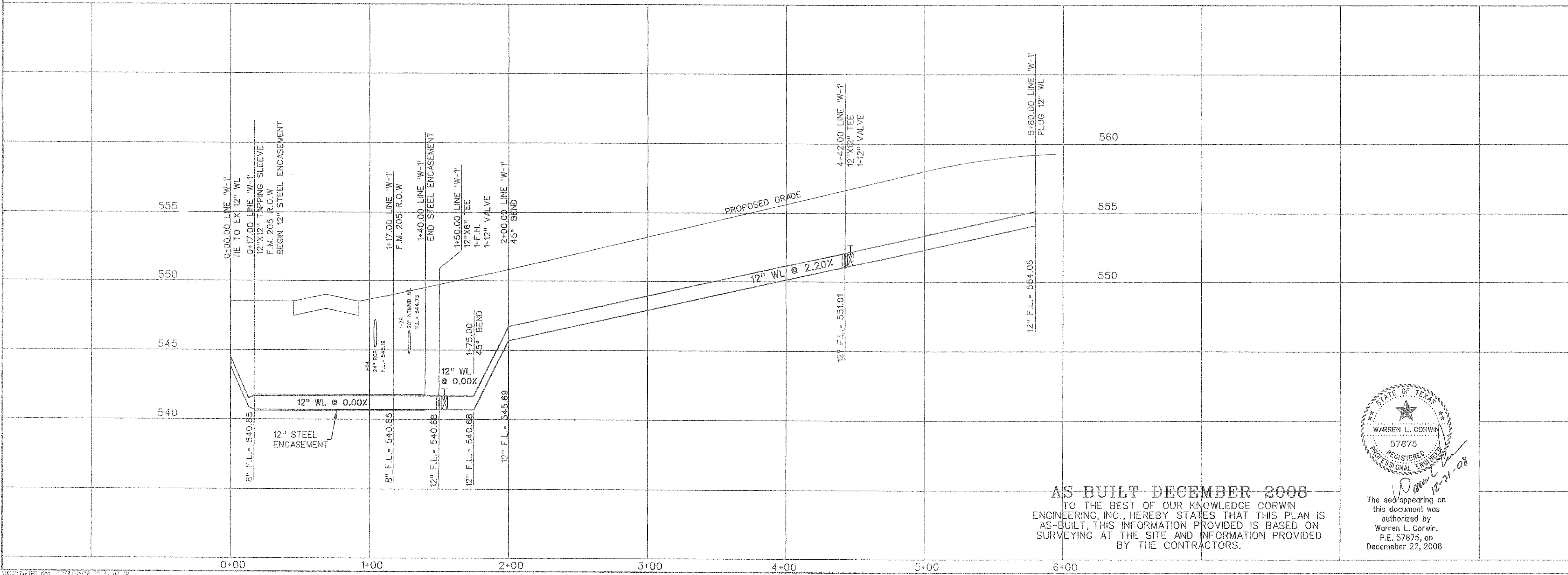
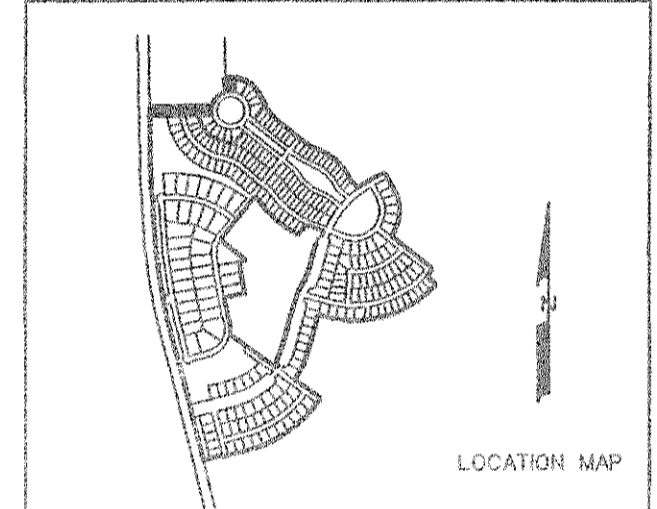
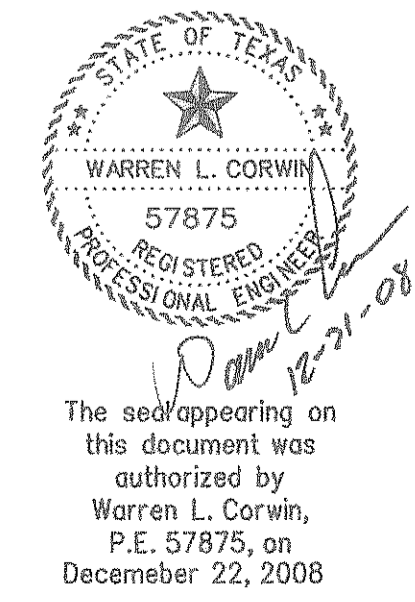


CONTRACTOR TO CONTACT N.T.M.W.D. 48 HOURS IN ADVANCE OF WORKING WITHIN N.T.M.W.D. EASEMENT @ 972-442-5405 PRIOR TO CONSTRUCTION OF 12" WL. CONTRACTOR ALSO TO INFORM TXDOT PRIOR TO CONSTRUCTION.



**AS-BUILT DECEMBER 2008**  
 TO THE BEST OF OUR KNOWLEDGE CORWIN ENGINEERING, INC., HEREBY STATES THAT THIS PLAN IS AS-BUILT. THIS INFORMATION PROVIDED IS BASED ON SURVEYING AT THE SITE AND INFORMATION PROVIDED BY THE CONTRACTORS.



<b>CORWIN ENGINEERING, INC.</b> 200 W. BELMONT, SUITE E ALLEN, TEXAS 75013 (972) 396-1200			
DEVELOPMENT PLANS FOR <b>STONE CREEK PHASE I</b> ROCKWALL, TEXAS			
BORDEAUX DRIVE & F.M. 205 12" WATER LINE PLAN & PROFILE			
DRAWN BY	DESIGNED BY	CHECKED BY	SHEET NO.
JOB NUMBER	DATE	SCALE: 1"=4' V	35A of 62
08033	JANUARY 2008	1"=40' H	