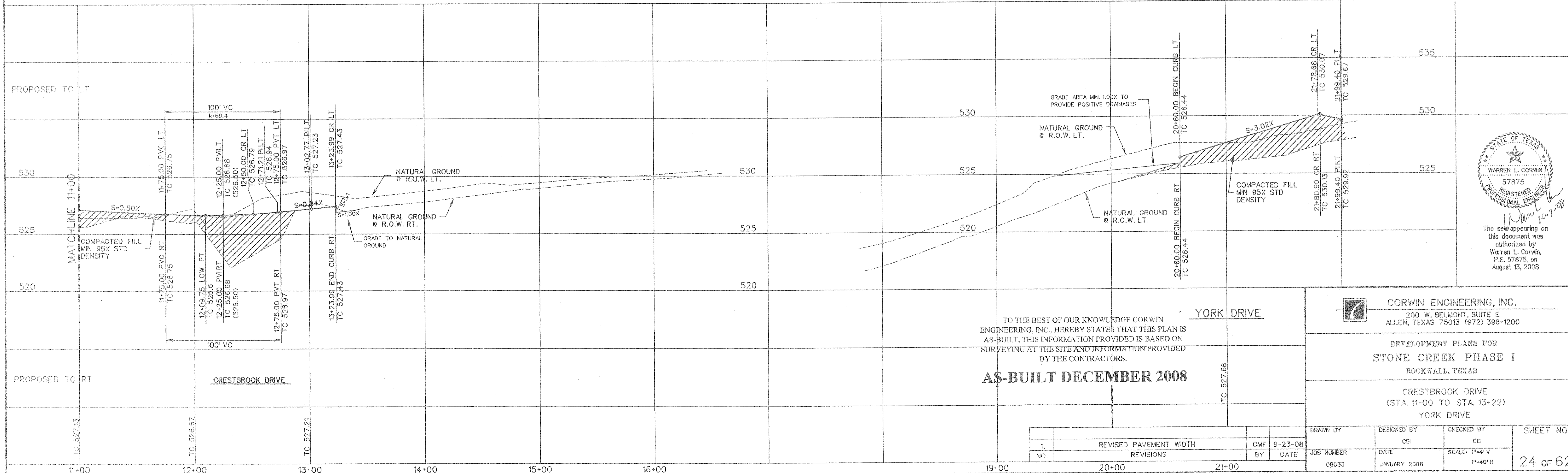
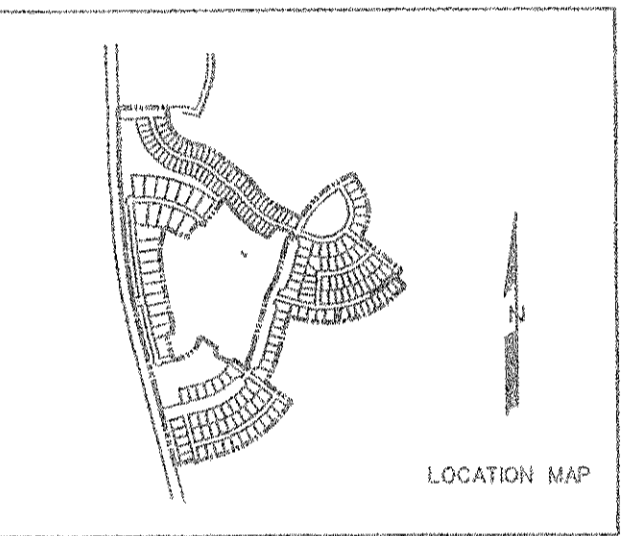
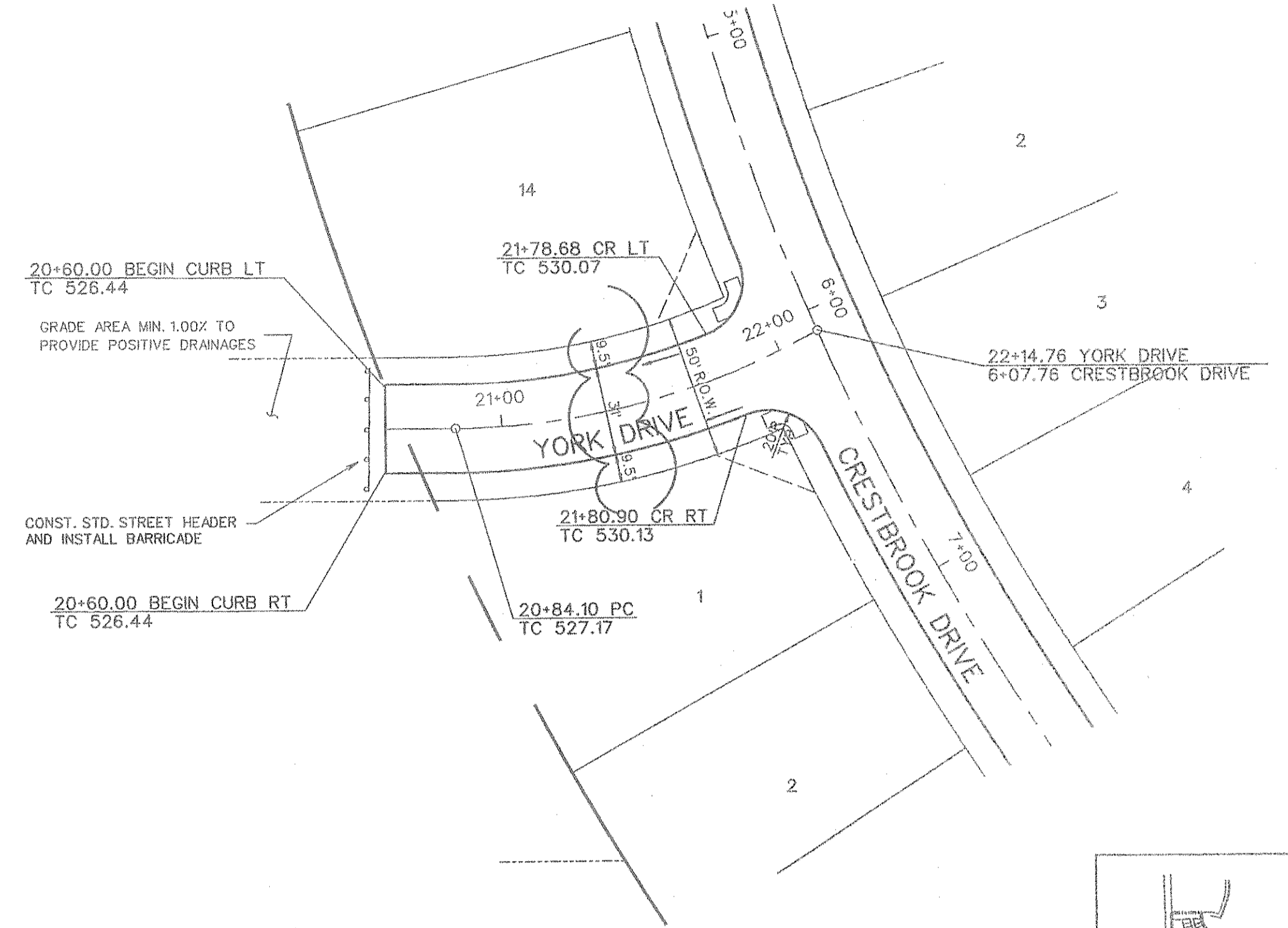
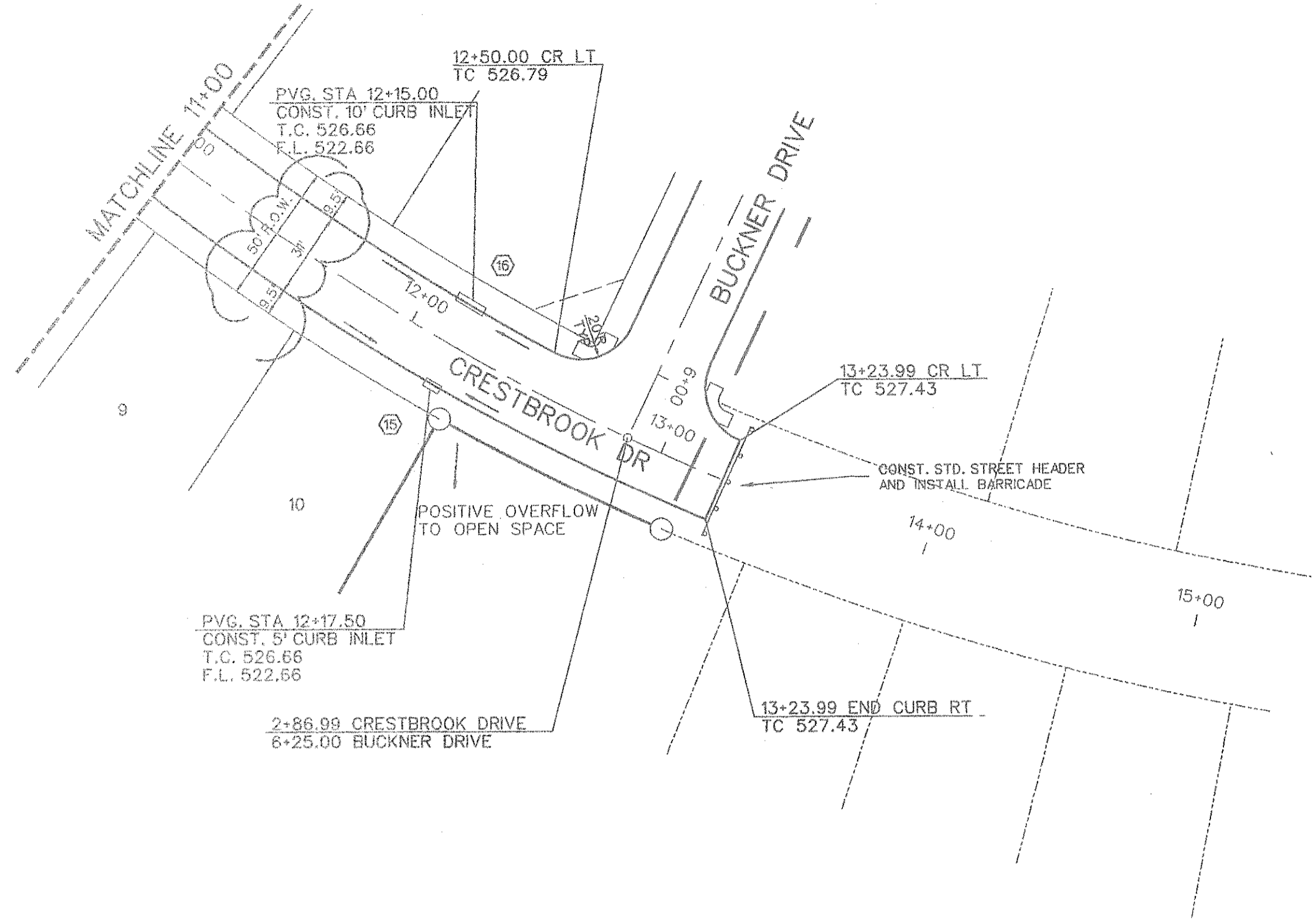
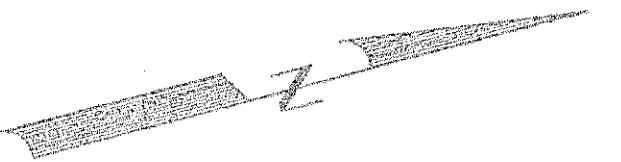




0 20 40 80  
SCALE: 1" = 40'



STATE OF TEXAS  
WARREN L. CORWIN  
57875  
REGISTERED PROFESSIONAL ENGINEER  
The seal appearing on this document was authorized by Warren L. Corwin, P.E. 57875, on August 13, 2008

TO THE BEST OF OUR KNOWLEDGE CORWIN ENGINEERING, INC., HEREBY STATES THAT THIS PLAN IS AS-BUILT. THIS INFORMATION PROVIDED IS BASED ON SURVEYING AT THE SITE AND INFORMATION PROVIDED BY THE CONTRACTORS.

**AS-BUILT DECEMBER 2008**

**CORWIN ENGINEERING, INC.**  
200 W. BELMONT, SUITE E  
ALLEN, TEXAS 75013 (972) 396-1200

DEVELOPMENT PLANS FOR  
**STONE CREEK PHASE I**  
ROCKWALL, TEXAS

CRESTBROOK DRIVE  
(STA. 11+00 TO STA. 13+22)  
YORK DRIVE

1.	REVISED PAVEMENT WIDTH	CMF	9-23-08	DRAWN BY	DESIGNED BY	CHECKED BY	SHEET NO.
NO.	REVISIONS	BY	DATE	08033	CEI	CEI	24 of 62
				08033	JANUARY 2008	SCALE: 1"=4' V 1"=40' H	