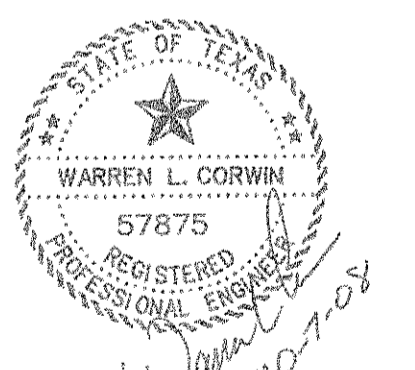
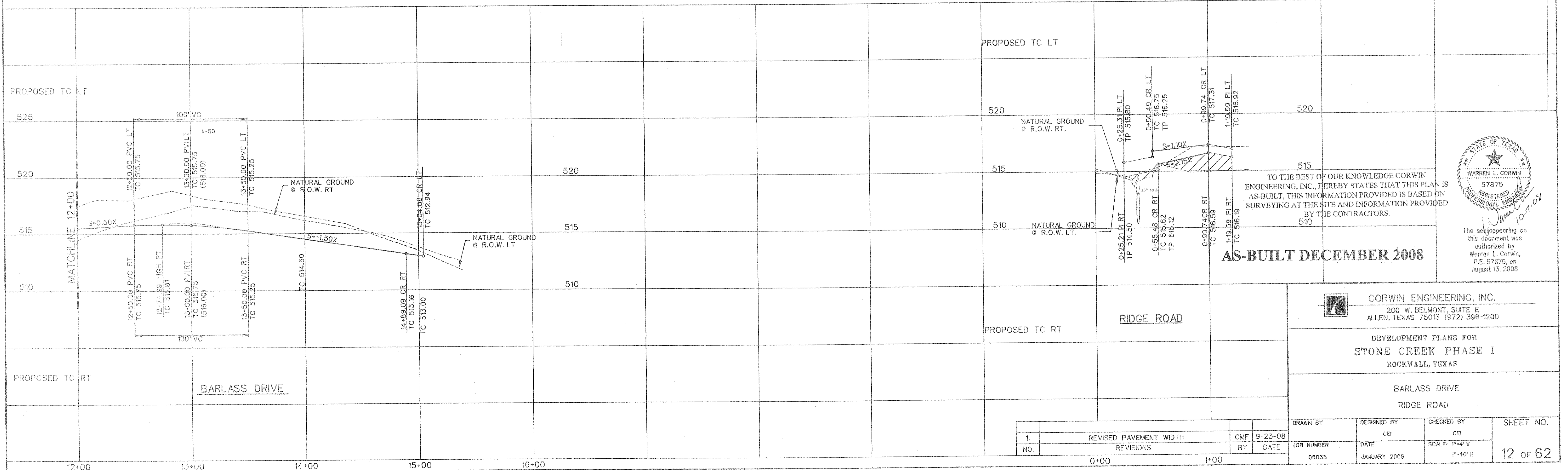
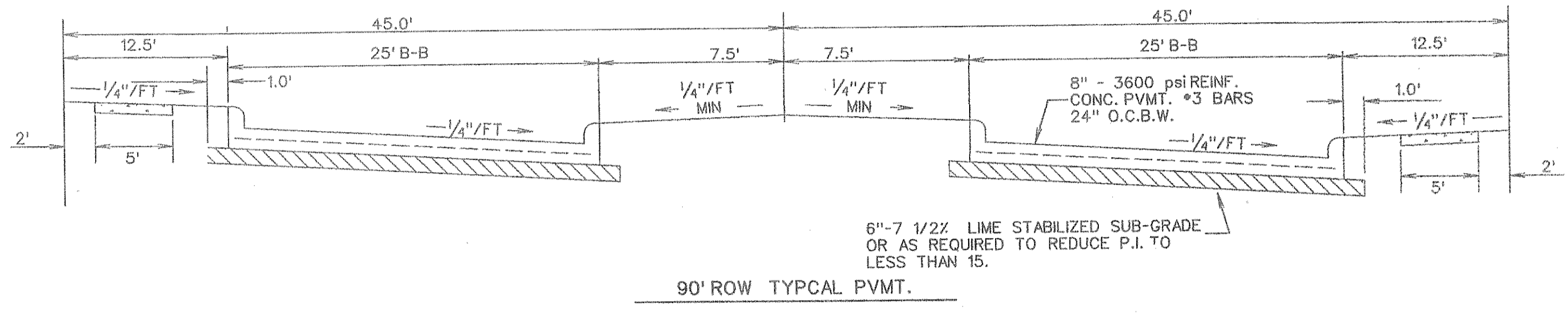
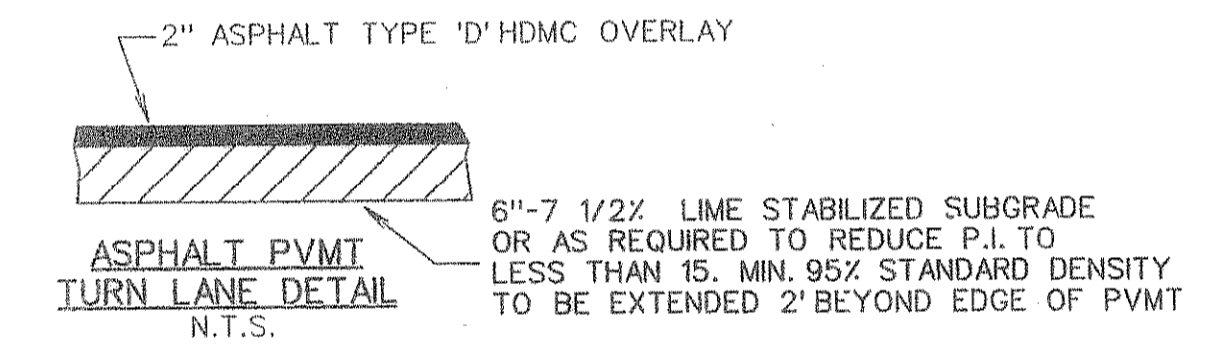
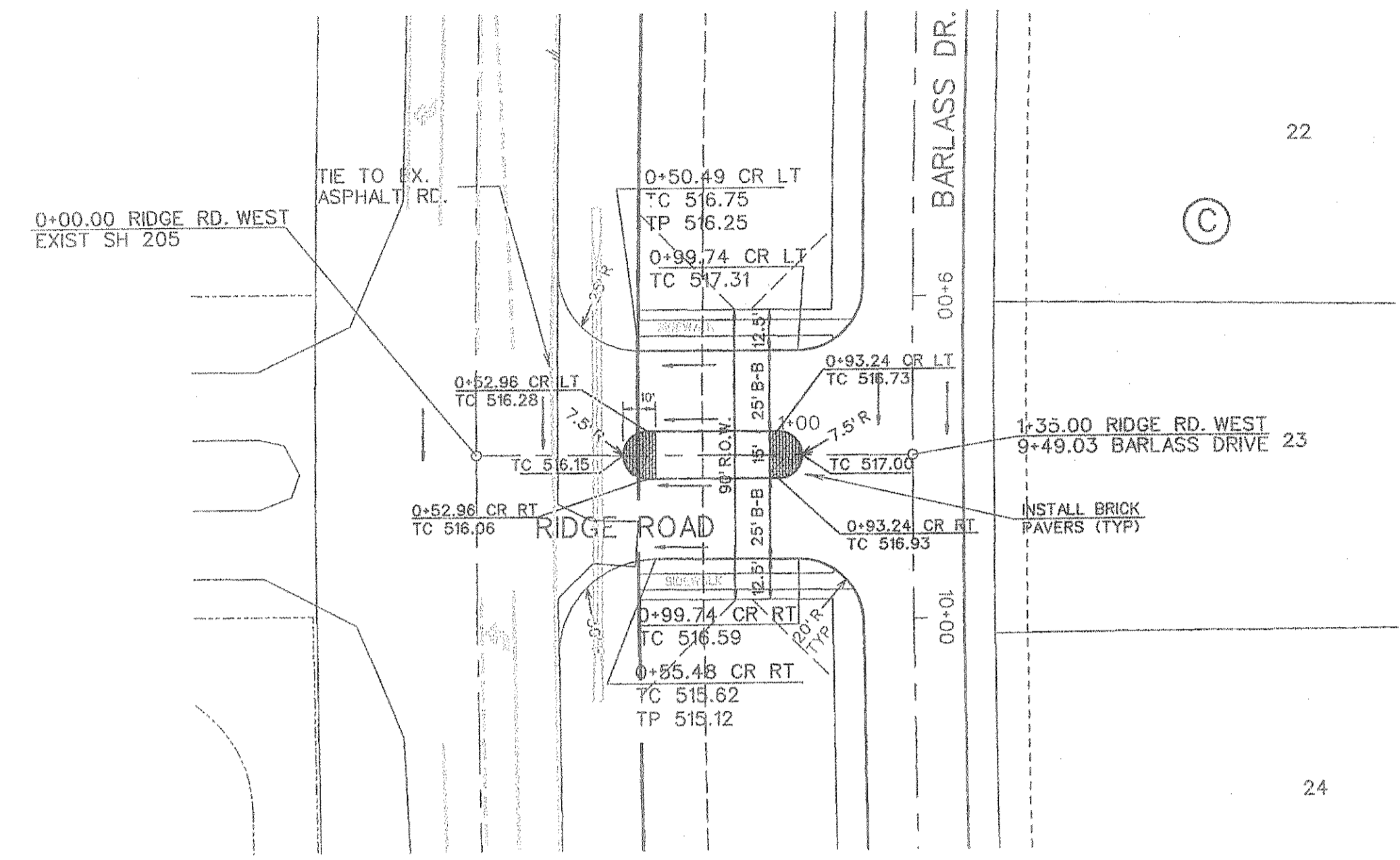
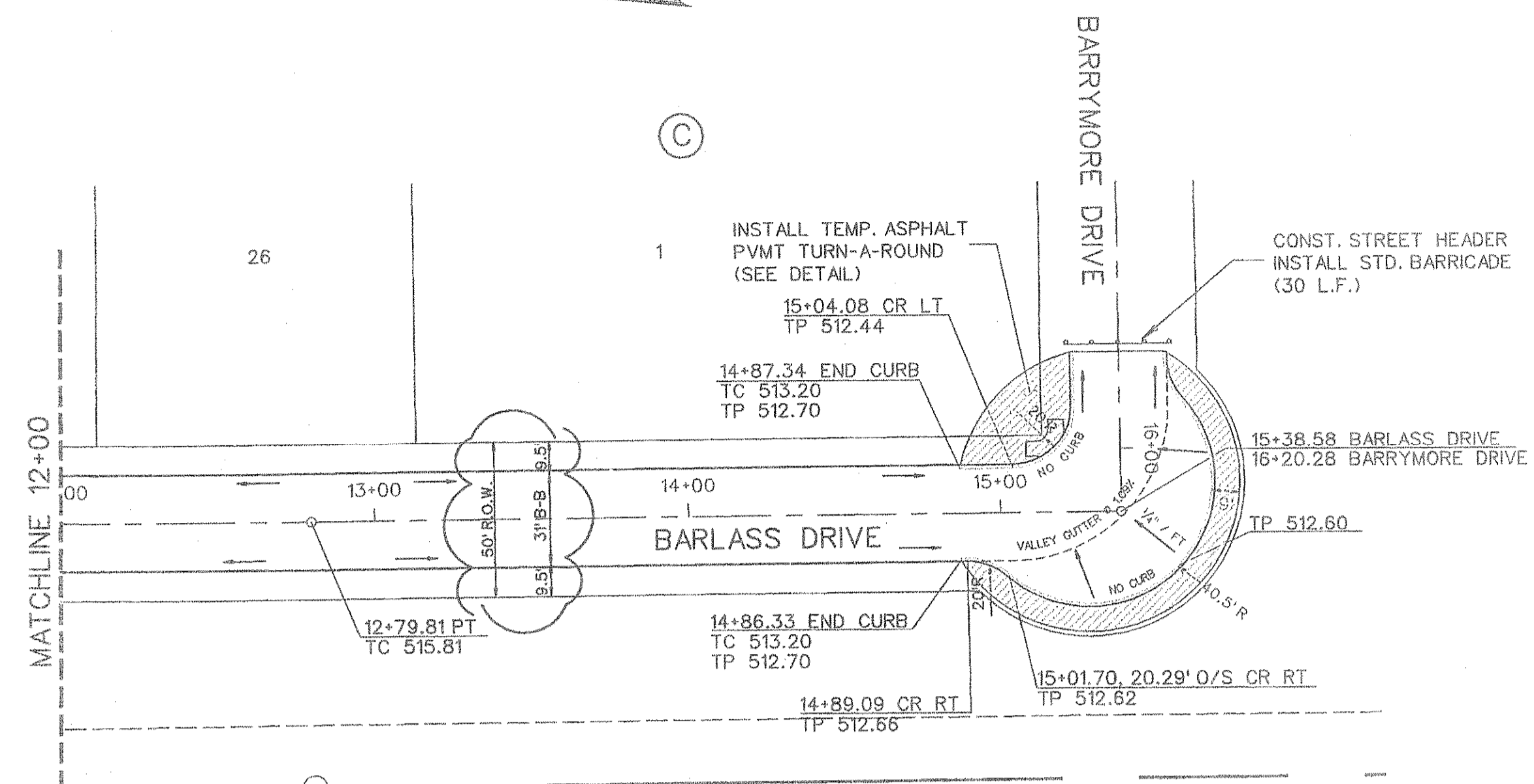
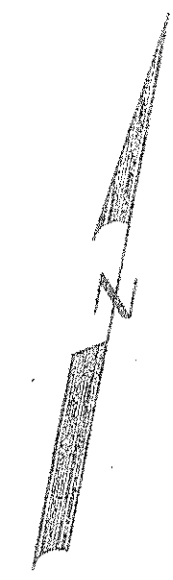




0 20 40 80
SCALE: 1" = 40'



TO THE BEST OF OUR KNOWLEDGE CORWIN ENGINEERING, INC., HEREBY STATES THAT THIS PLAN IS AS-BUILT. THIS INFORMATION PROVIDED IS BASED ON SURVEYING AT THE SITE AND INFORMATION PROVIDED BY THE CONTRACTORS.

AS-BUILT DECEMBER 2008

CORWIN ENGINEERING, INC.
200 W. BELMONT, SUITE E
ALLEN, TEXAS 75013 (972) 396-1200

DEVELOPMENT PLANS FOR
STONE CREEK PHASE I
ROCKWALL, TEXAS

BARLASS DRIVE
RIDGE ROAD

1.	REVISED PAVEMENT WIDTH	CMF	9-23-08	DRAWN BY	DESIGNED BY	CHECKED BY	SHEET NO.
NO.	REVISIONS	BY	DATE	JOB NUMBER	DATE	SCALE: 1"=40' V 1"=40' H	12 OF 62
				08033	JANUARY 2008		