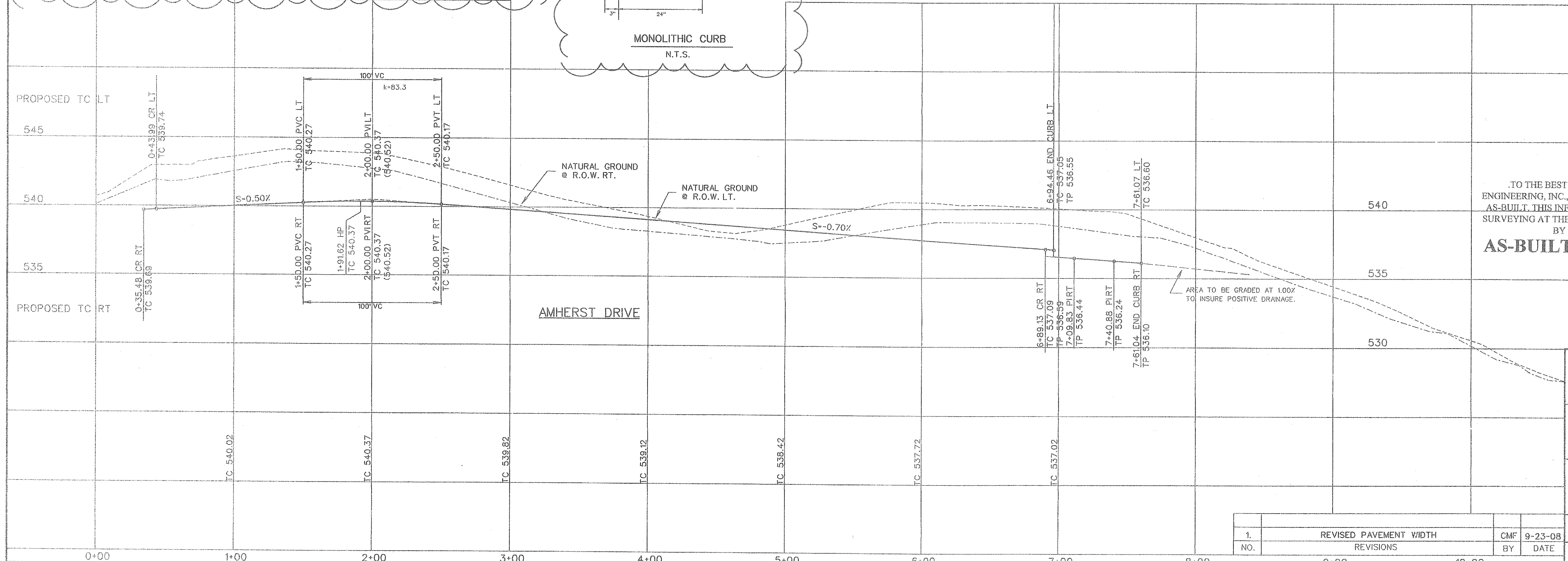
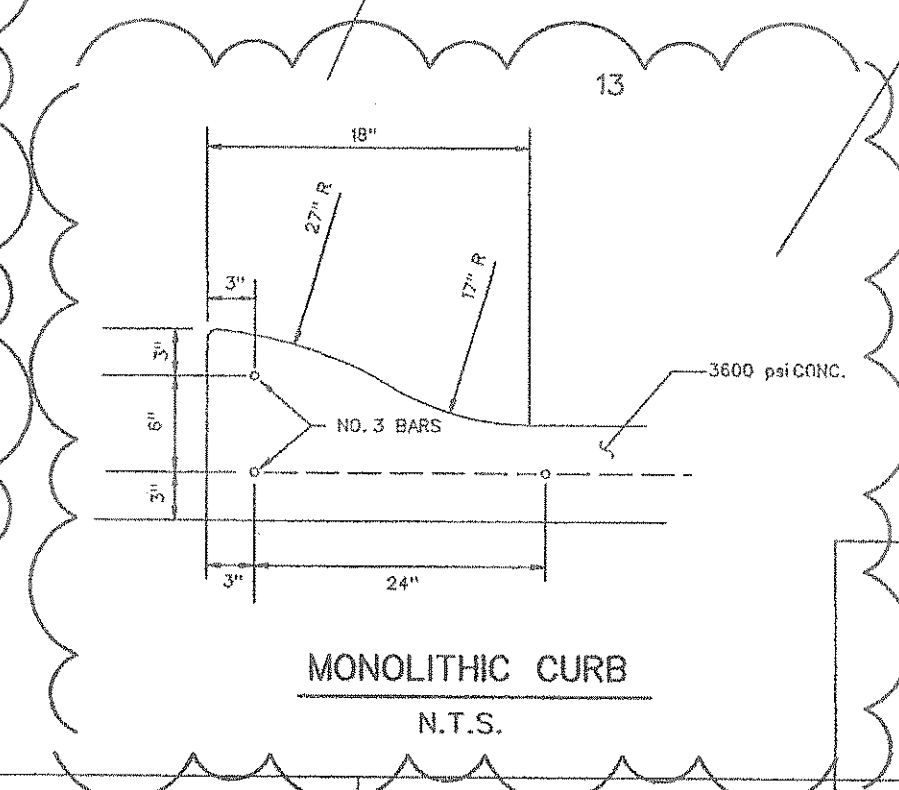
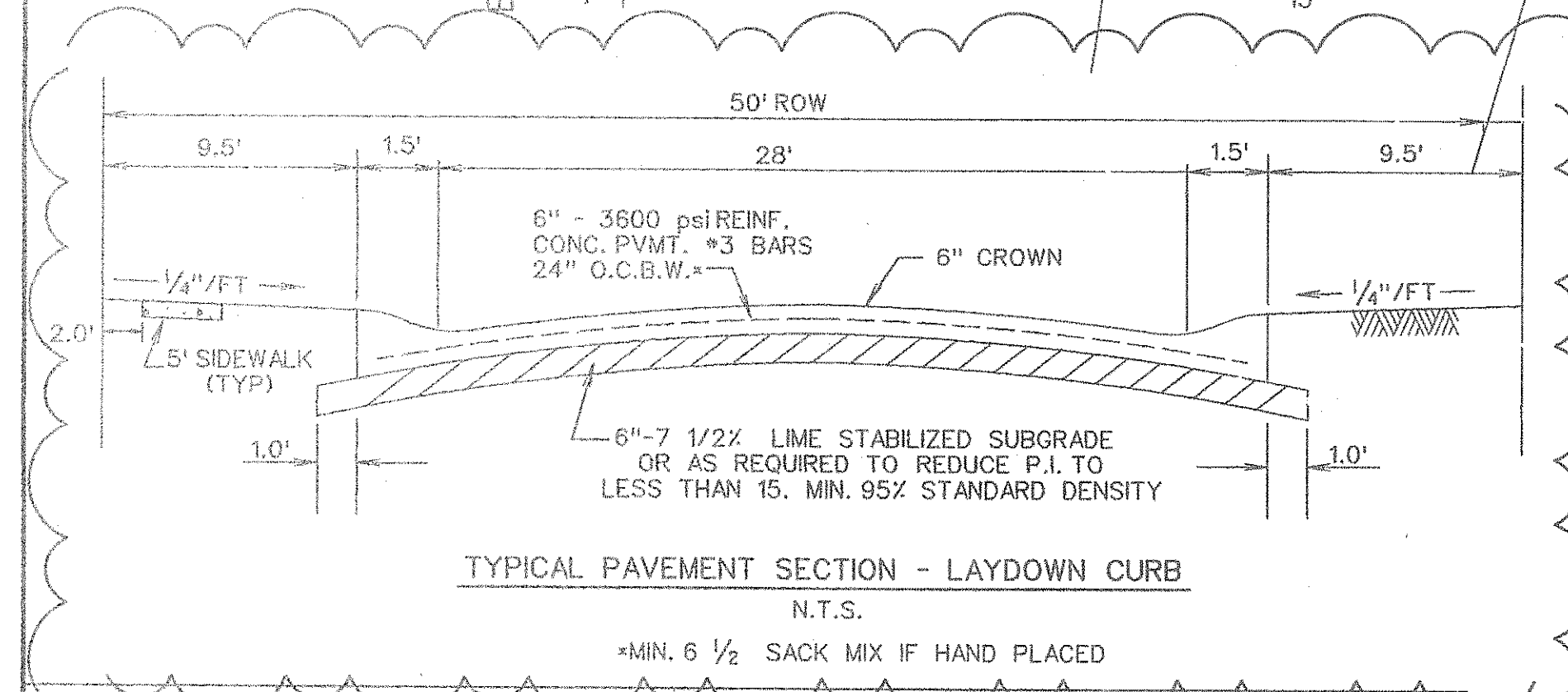
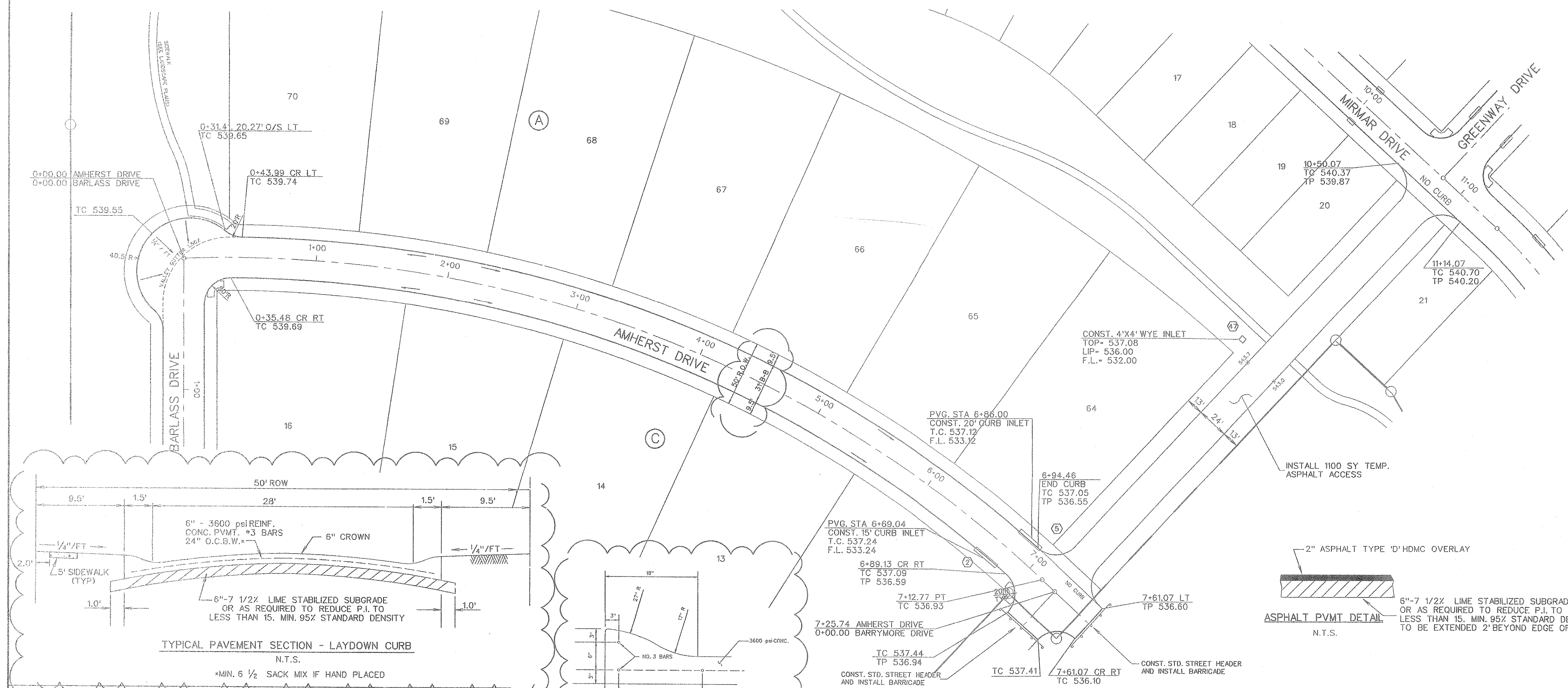
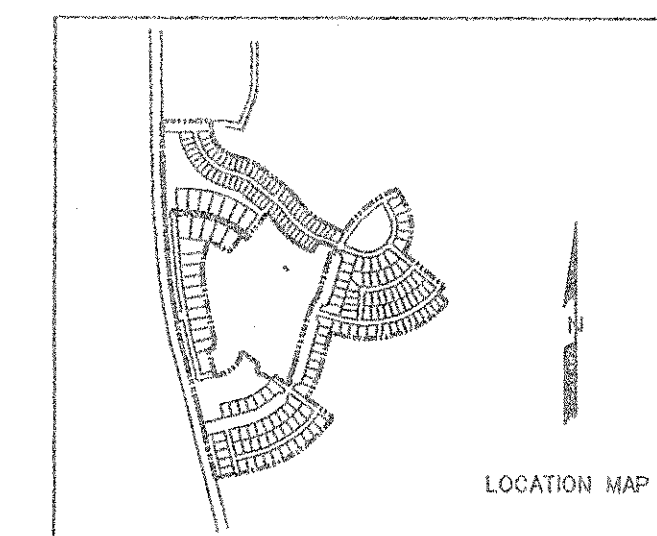
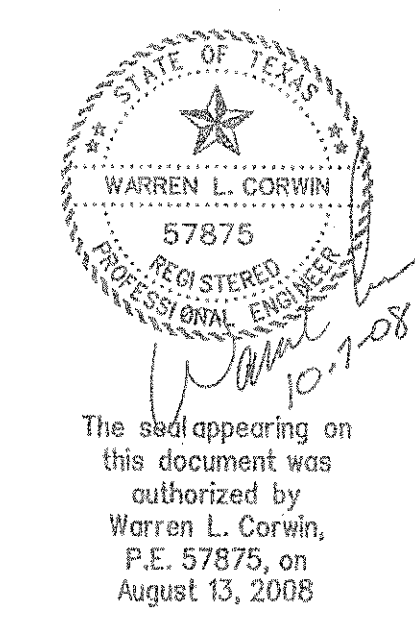


0 20 40 80  
SCALE: 1" = 40'



TO THE BEST OF OUR KNOWLEDGE CORWIN ENGINEERING, INC. HEREBY STATES THAT THIS PLAN IS AS-BUILT. THIS INFORMATION PROVIDED IS BASED ON SURVEYING AT THE SITE AND INFORMATION PROVIDED BY THE CONTRACTORS.

**AS-BUILT DECEMBER 2008**



**CORWIN ENGINEERING, INC.**  
200 W. BELMONT, SUITE E  
ALLEN, TEXAS 75013 (972) 396-1200

DEVELOPMENT PLANS FOR  
**STONE CREEK PHASE I**  
ROCKWALL, TEXAS

AMHERST DRIVE

1.	REVISED PAVEMENT WIDTH	CMF	9-23-08	DRAWN BY PJB	DESIGNED BY CEI	CHECKED BY CEI	SHEET NO.
NO.	REVISIONS	BY	DATE	JOB NUMBER 08033	DATE JANUARY 2008	SCALE: 1"=4' V 1"=40' H	10 OF 62