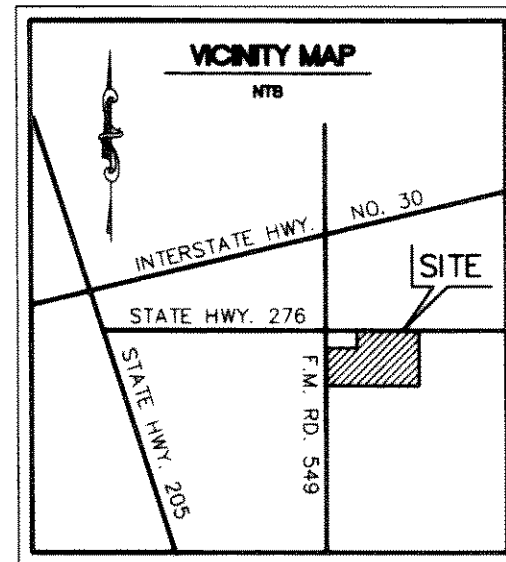
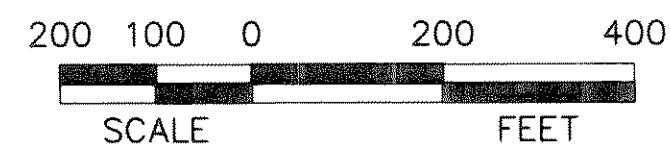
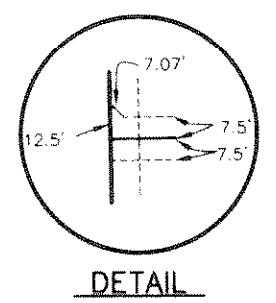
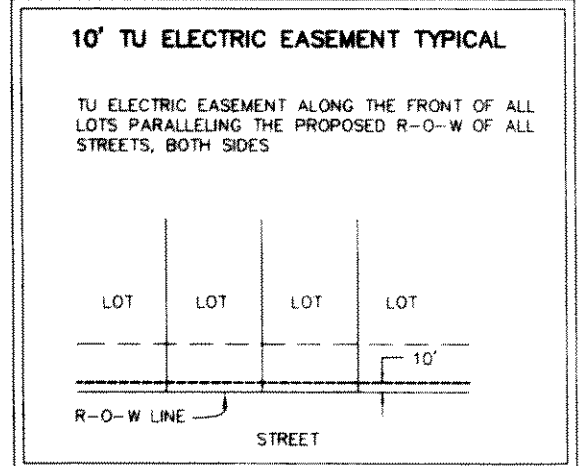
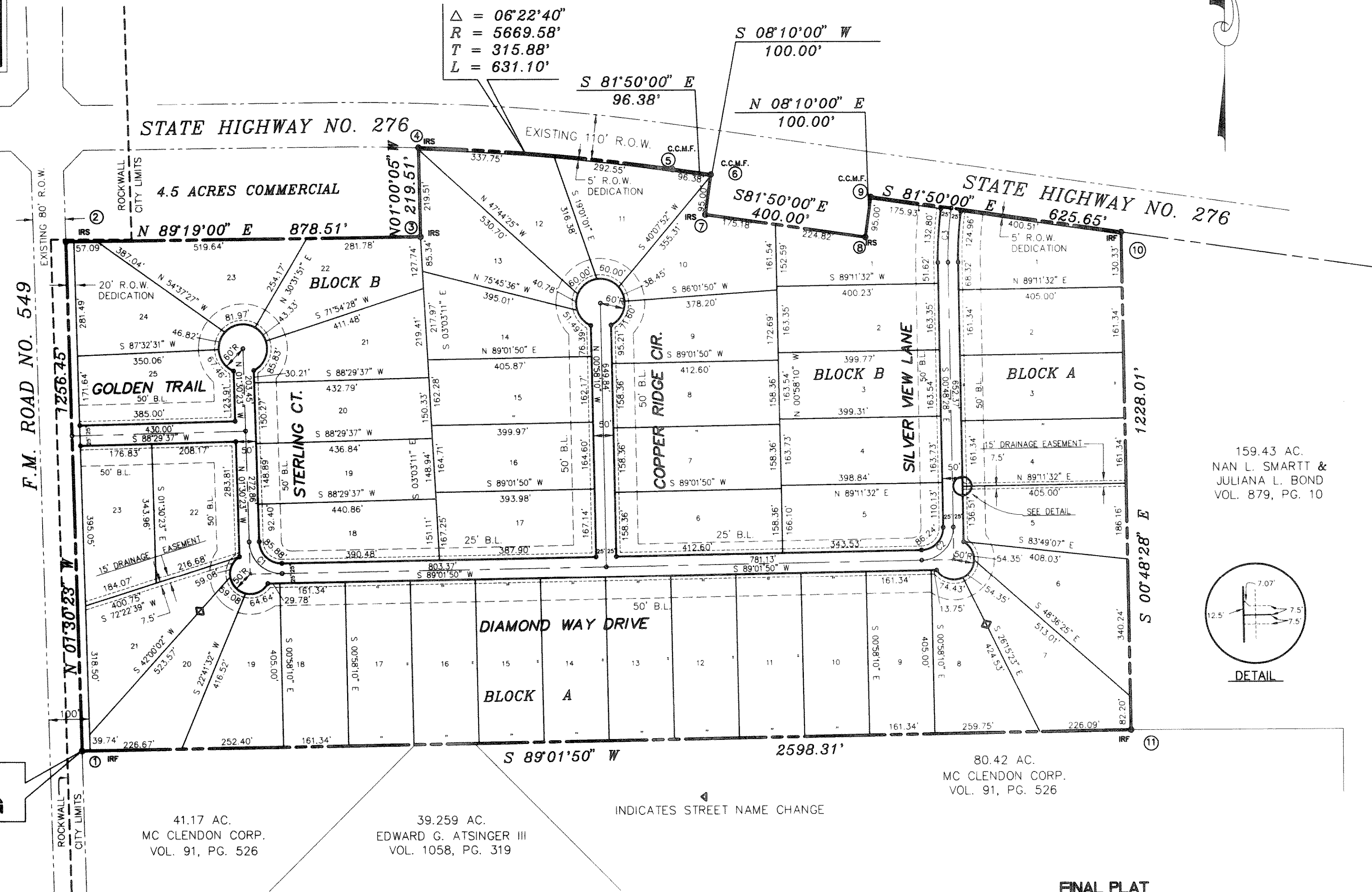


ROCKWALL SURFACE ADJUSTED COORDINATES

1	7018784.882282188	2607853.835841134
2	7020050.895582424	2607820.905345618
3	7020061.372379876	2608899.348066767
4	7020280.853266331	2608895.512760198
5	7020228.120923897	2609273.808971518
6	7020212.430028978	2609419.310933070
7	7020113.444130648	2609405.105578975
8	7020056.622724866	2608801.049170892
9	7020155.608622597	2608815.234527188
10	7020068.732652017	2610434.561109217
11	7018838.844115438	2610451.871993899



$\Delta = 06^{\circ}22'40''$   
 $R = 5669.58'$   
 $T = 315.88'$   
 $L = 631.10'$



POINT OF BEGINNING

CURVE	RADIUS	LENGTH	TANGENT	CHORD	BEARING	DELTA
C1	80.00'	124.91'	79.25'	112.61'	S 46°14'16" E	89°27'46"
C2	80.00'	125.44'	79.77'	112.98'	N 44°06'41" E	89°50'18"
C3	854.73'	133.88'	67.08'	133.74'	S 03°40'46" W	08°58'26"

FINAL PLAT  
**STERLING FARMS ADDITION**  
 78.457 ACRES  
 OUT OF THE  
**JOHN RAMBEY SURVEY, ABSTRACT NO. 186**  
 ROCKWALL COUNTY, TEXAS

SCALE: 1" = 200' DATE: NOV. 5, 1996

SURVEYOR:  
 DANIEL A. SMITH SURVEYORS, INC.  
 900 VIA AVENIDA  
 MESQUITE, TEXAS 75150  
 (972) 882-1794  
 DMS REF. = 960022-1