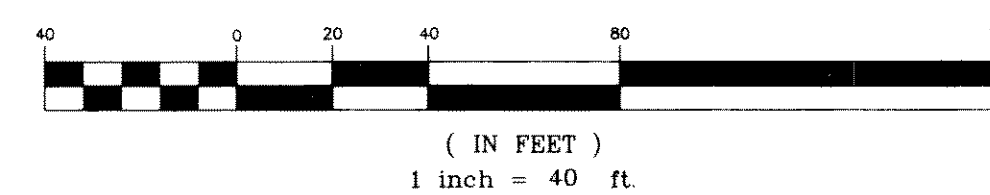


GRAPHIC SCALE



THE SEAL APPEARING ON THIS DOCUMENT WAS AUTHORIZED BY W.L. DOUPHRADE II TEXAS P.E. NO. 80102 ON 11/25/74

DOUPHRADE & ASSOCIATES
ENGINEERING - SURVEYING - CONSTRUCTION MANAGEMENT

P.O. BOX 1336
ROCKWALL, TEXAS 75087
PHONE: (972)771-8888

STORM DRAINAGE PLAN & PROFILE
STERLING FARMS ADDITION
ROCKWALL COUNTY, TEXAS

REVISION

W.L.D.

CHECKED

ACAD

DRAWN

11-25-98

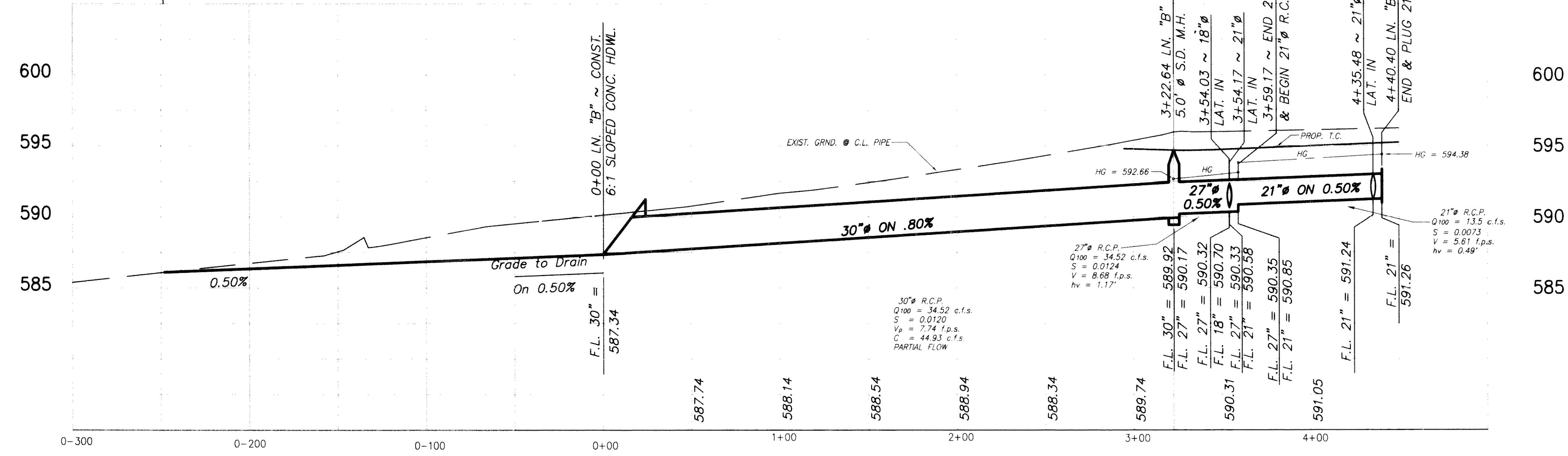
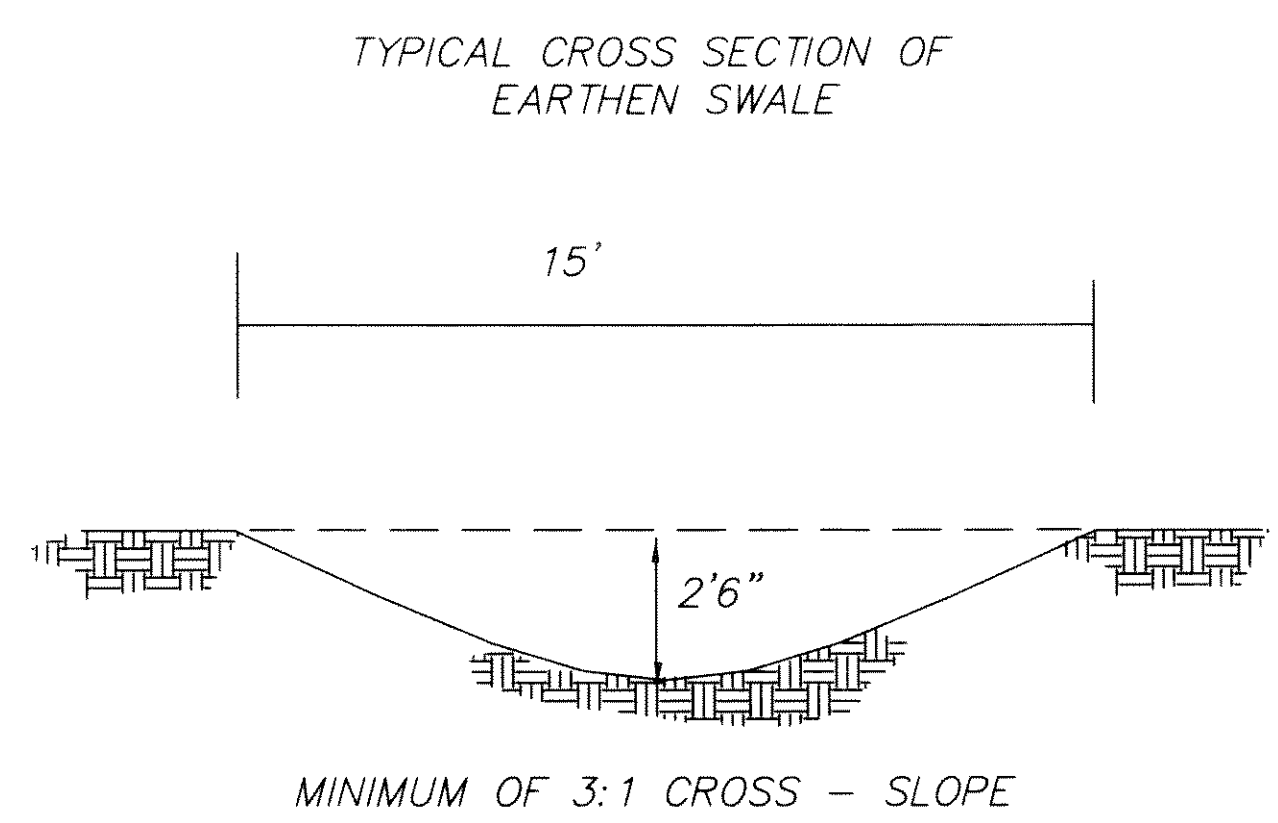
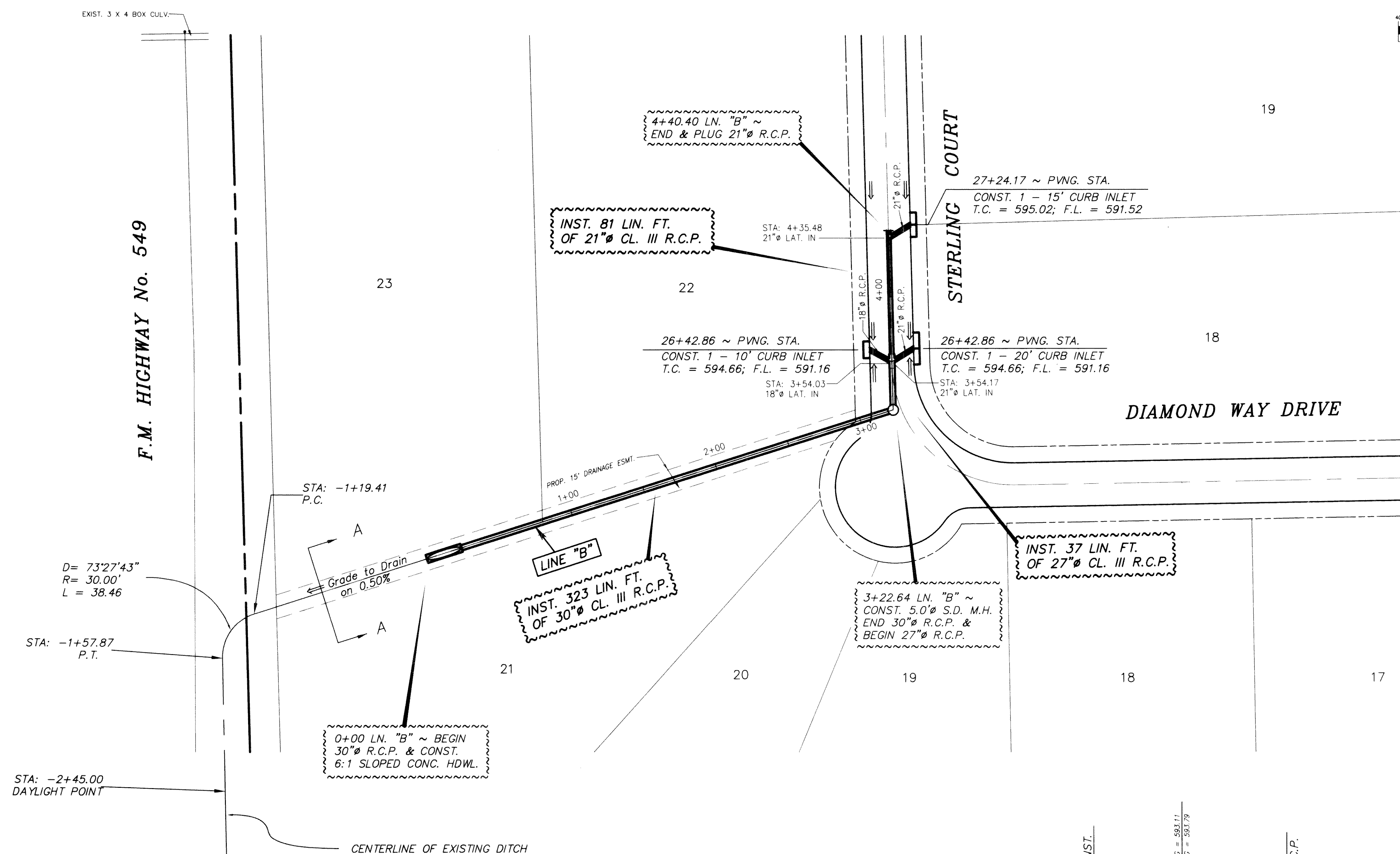
DATE

960028D2

PROJECT

11

OF 13



TOP TXDOT CONC. MARKER S. CUT BACK CORNER OF THE INTER. OF ST. HWY. No. 276 & F.M. 549
ELEV: 595.27

TOP TXDOT CONC. MARKER S. SIDE OF ST. HWY No. 276
1643' ± EAST OF THE INTER. OF ST. HWY No. 276
AND F.M. HIGHWAY No. 549
ELEV: 604.75