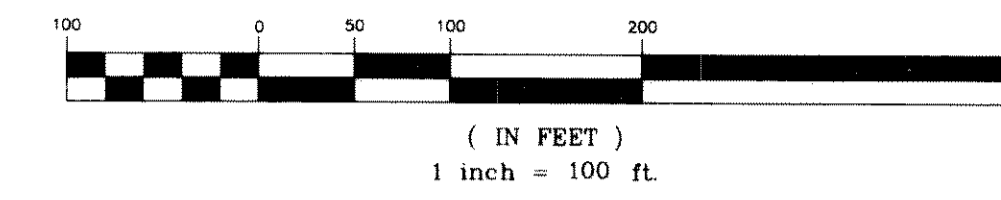


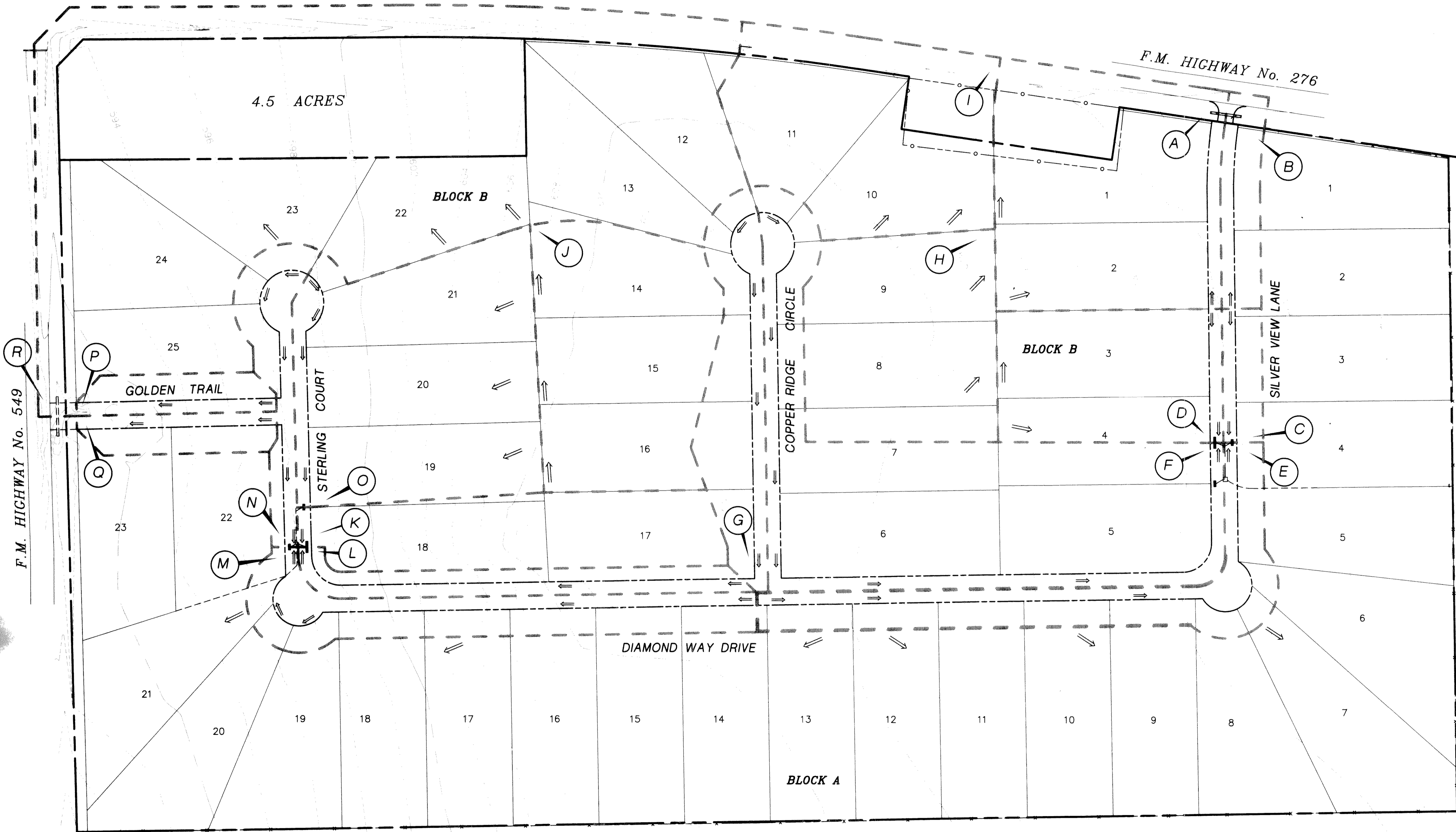
GRAPHIC SCALE



F.M. HIGHWAY No. 276

F.M. HIGHWAY No. 276

4.5 ACRES



DRAINAGE DATA				
AREA	ACRES	C	I <sub>100</sub>	Q <sub>100</sub>
A	4.30	0.35	9.00	13.55 c.f.s.
B	0.71	0.35	9.00	2.24 c.f.s.
C	0.43	0.35	9.00	1.35 c.f.s.
D	2.35	0.35	9.00	7.40 c.f.s.
E	2.20	0.35	9.00	6.93 c.f.s.
F	6.29	0.35	9.00	19.81 c.f.s.
G	1.65	0.35	9.00	5.20 c.f.s.
H	3.18	0.35	9.00	10.02 c.f.s.
I	3.86	0.35	9.00	12.16 c.f.s.
J	3.64	0.35	9.00	11.47 c.f.s.
K	2.43	0.35	9.00	7.65 c.f.s.
L	1.00	0.35	9.00	3.15 c.f.s.
M	1.91	0.35	9.00	6.02 c.f.s.
N	0.86	0.35	9.00	2.71 c.f.s.
O	4.76	0.35	9.00	14.99 c.f.s.
P	0.60	0.35	9.00	1.89 c.f.s.
Q	0.61	0.35	9.00	1.92 c.f.s.
R	15.48	0.35	8.10	43.89 c.f.s.

F.M. HIGHWAY No. 549



THE SEAL APPEARING ON THIS DOCUMENT IS THE PROPERTY OF W.L. DOUPHRATE, REGISTERED PROFESSIONAL ENGINEER, STATE OF TEXAS, NO. 60102 ON 11/25/96

DOUPHRATE & ASSOCIATES  
ENGINEERING - SURVEYING - CONSTRUCTION MANAGEMENT  
P.O. BOX 1336 ROCKWALL, TEXAS 75087  
PHONE: (972)771-8686

**DRAINAGE AREA MAP**  
STERLING FARMS ADDITION  
ROCKWALL COUNTY, TEXAS

REVISION

W.L.D.  
CHECKED

ACAD  
DRAWN

11-25-96  
DATE

98002DAM  
PROJECT

9  
OF 13

TOP TXDOT CONC. MARKER S. CUT BACK CORNER OF THE INTER. OF ST. HWY. No. 276 & F.M. 549  
ELEV: 595.27  
TOP TXDOT CONC. MARKER S. SIDE OF ST. HWY No. 276  
164.3' ± EAST OF THE INTER. OF ST. HWY No. 276  
AND F.M. HIGHWAY No. 549  
ELEV: 604.75