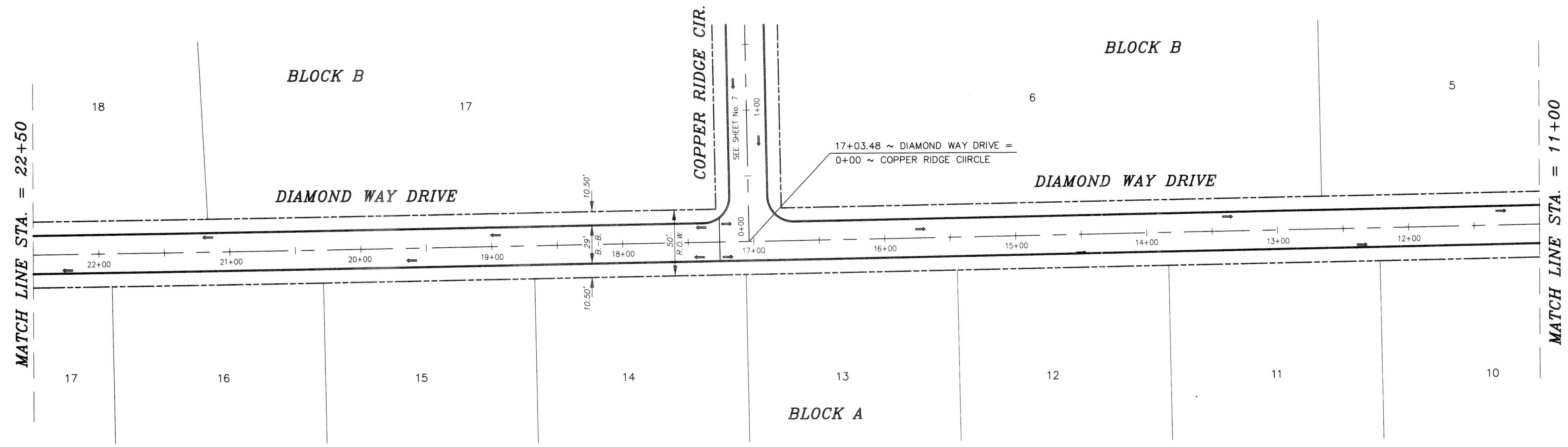
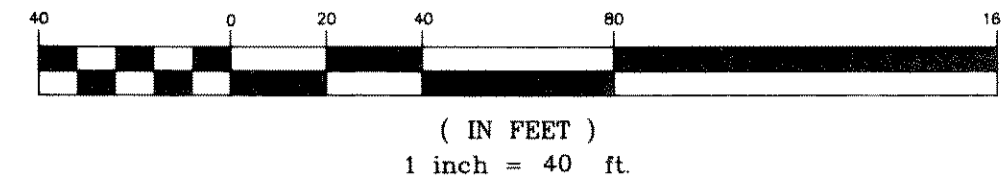




GRAPHIC SCALE



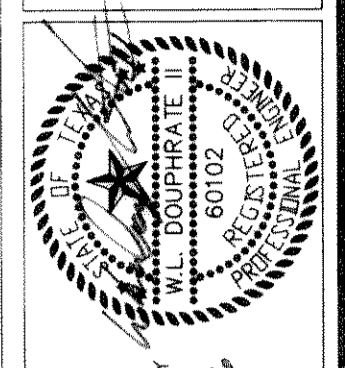
PVI STA = 21+00
PVI ELEV = 609.40
A.D. = -2.50
K = 40.00

HIGH POINT ELEV = 611.21
HIGH POINT STA = 17+26.19
PVI STA = 17+00
PVI ELEV = 611.40



TOP TXDOT CONC. MARKER S. CUT BACK CORNER OF THE INTER. OF ST. HWY. No. 276 & F.M. 549
ELEV: 595.27

TOP TXDOT CONC. MARKER S. SIDE OF ST. HWY. No. 276
164' ± EAST OF THE INTER. OF ST. HWY. No. 276
AND F.M. HIGHWAY No. 549
ELEV: 604.75



THE SEAL APPEARING ON THIS DOCUMENT WAS AUTHORIZED BY W.L. DOUPHRATE II TEXAS P.E. NO. 60102 ON 11/25/96

DOUPHRATE & ASSOCIATES
ENGINEERING - SURVEYING - CONSTRUCTION MANAGEMENT
P.O. BOX 1336 ROCKWALL, TEXAS 75087
PHONE: (972)771-8888

PAVING PLAN & PROFILE
DIAMOND WAY DRIVE
STERLING FARMS ADDITION
ROCKWALL COUNTY, TEXAS

REVISION
WLD CHECKED
ACAD DRAWN
11-25-96 DATE
98002PV2 PROJECT