



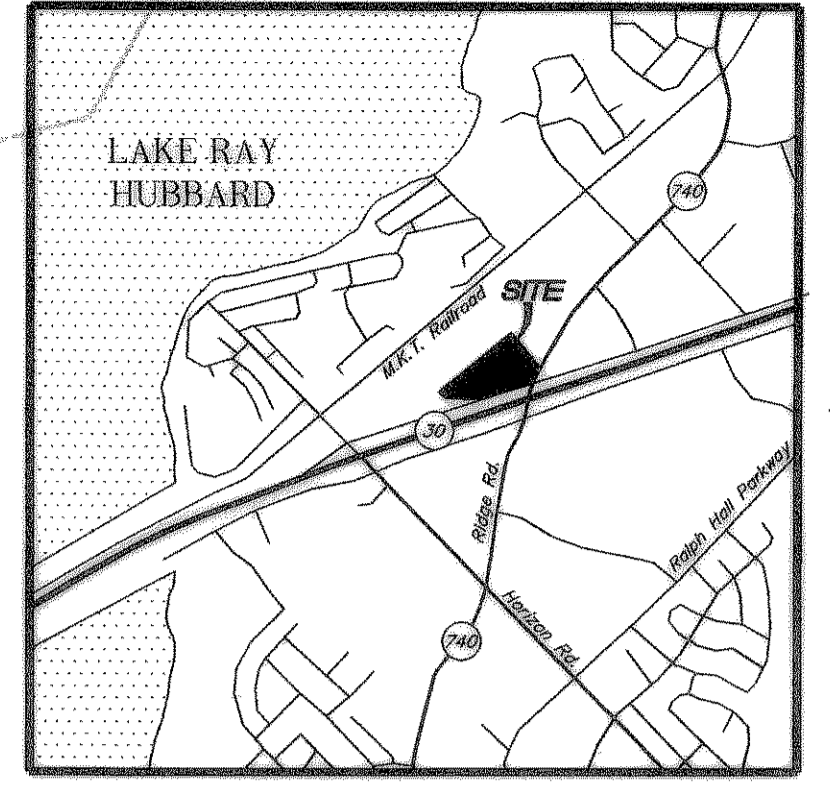
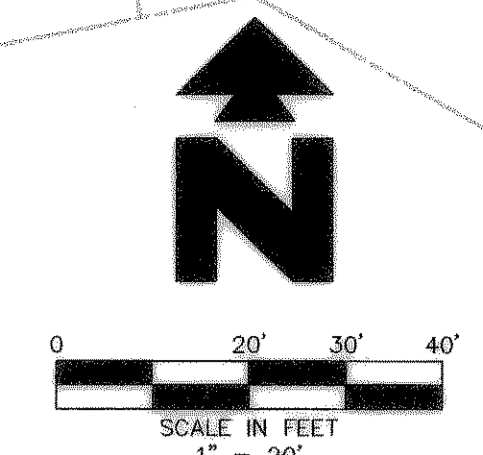
**TEXAS EXCAVATION SAFETY SERVICES**  
 Phone 1-800-344-8377  
 Lot 1, Block A  
 174,545 Square Feet or 14,908 Acres  
 Cabinet E, Slide 279  
 P.R.R.C.T.

CONTRACTOR TO PROVIDE SLEEVE AROUND EXISTING SANITARY SEWER SERVICE LINE 5' EACH SIDE OF RETAINING WALL

CONTRACTOR TO OUT EXISTING SANITARY SEWER SERVICE LINE AND PLUG

CONTRACTOR TO INSTALL MANHOLE AND PLUG EXISTING SANITARY SEWER SERVICE LINE TO EXISTING BUILDING. ONLY ONE SERVICE LINE FROM THIS DEVELOPMENT MAY ATTACH TO EXISTING LINE.

**IHOP No. 9448 Addition**  
 Lot 1, Block 1  
 43,799 Square Feet or 1.006 Acres  
 Cabinet 199, Slide 200  
 P.R.R.C.T.



**Vicinity Map**  
 Not to Scale

NOTE: SEE ARCHITECTURAL PLANS FOR EXACT LOCATIONS AND DIMENSIONS OF PORCHES, RAMPS, VESTIBULE, SLOPED PAVING, TRUCK DOCKS, BUILDING UTILITY ENTRANCE LOCATIONS AND PRECISE BUILDING DIMENSIONS.

BENCH MARK: CONCRETE MONUMENT WITH BRASS CAP LOCATED AT THE SOUTHWEST INTERSECTION OF THE ROAD TO THE MARINA AND VILLAGE ROAD. BENCH MARK IS ONE FOOT WEST OF VILLAGE ROAD AND EIGHT FEET NORTHEAST OF AN EXISTING WYE INLET. ELEVATION = 508.0488

**LEGEND**

EXISTING		
CHC	CORNER	BENCHMARK
E	EAST OF ELECTRIC	CE
ES	EXISTING GROUND	CE
W	WATER	CE
OH	OVERHEAD	CE
S	SOUTH OF SEWER	CE
T	TELEPHONE	CE
UG	UNDERGROUND	CE
W	WEST OF WATER	CE
WM	WATER MAIN	CE
---	PROPERTY LINE	CE
---	STORM DRAIN	CE
G	GAS	CE
OHE	OVERHEAD ELECTRIC	CE
X'S	SEWER	CE
UGE	UNDERGROUND ELECTRIC	CE
UGT	UNDERGROUND TELEPHONE	CE
UGTV	UNDERGROUND TV	CE
X'W	WATER	CE

PROPOSED		
---	BOUNDARY LINE	
---	RIGHT OF WAY LINE	
X'G	GAS SERVICE	
X'S	SANITARY SEWER SERVICE	
UGE	UNDERGROUND ELECTRIC SERVICE	
UGT	UNDERGROUND TELEPHONE SERVICE	
X'W	WATER SERVICE	

**GENERAL UTILITY NOTES**

- ALL DOMESTIC WATER LINES SHALL BE CLASS 200 DR-14 PVC WITH 42" MIN. COVER.
- ALL SANITARY SEWER LINES SHALL BE SDR-35 WITH 60" MIN. COVER.
- CONTRACTOR SHALL COORDINATE ANY DISRUPTIONS TO EXISTING UTILITY SERVICES WITH ADJACENT PROPERTY OWNERS.
- ALL ELECTRIC, TELEPHONE AND GAS EXTENSIONS INCLUDING SERVICE LINES SHALL BE CONSTRUCTED TO THE APPROPRIATE UTILITY COMPANY SPECIFICATIONS. ALL UTILITY DISCONNECTIONS SHALL BE COORDINATED WITH THE DESIGNATED UTILITY COMPANIES.
- CONSTRUCTION SHALL NOT START ON ANY PUBLIC UTILITY SYSTEM UNTIL WRITTEN APPROVAL HAS BEEN RECEIVED BY THE ENGINEER FROM THE APPROPRIATE GOVERNING AUTHORITY AND CONTRACTOR HAS BEEN NOTIFIED BY THE ENGINEER.
- PRIOR TO THE CONSTRUCTION OF OR CONNECTION TO ANY STORM DRAIN, SANITARY SEWER, WATER MAIN OR ANY OF THE DRY UTILITIES, THE CONTRACTOR SHALL EXCAVATE, VERIFY AND CALCULATE ALL POINTS OF CONNECTION AND ALL UTILITY CROSSINGS AND INFORM CEI ENGINEERING AND THE OWNER/DEVELOPER OF ANY CONFLICT OR REQUIRED DEVIATIONS FROM THE PLAN. NOTIFICATION SHALL BE MADE A MINIMUM OF 48 HOURS PRIOR TO CONSTRUCTION. CEI ENGINEERING AND ITS CLIENTS SHALL BE HELD HARMLESS IN THE EVENT THAT THE CONTRACTOR FAILS TO MAKE SUCH NOTIFICATION.
- UNLESS OTHERWISE SHOWN, CALLED OUT OR SPECIFIED HEREON OR WITHIN SPECIFICATIONS:
  - ALL WATER LINE FITTINGS SHALL BE INSTALLED WITH THRUST BLOCKING PER DETAIL 31A. (PER CITY DETAIL)
  - ALL WATER LINE PIPE BEDDING SHALL BE INSTALLED PER CITY DETAIL.
  - ALL SANITARY SEWER PIPE BEDDING SHALL BE INSTALLED PER CITY DETAIL.
- ALL WATER SERVICES DOMESTIC AND IRRIGATION SHALL HAVE DOUBLE CHECK AND BACKFLOW PREVENTERS.
- NO TREES SHALL BE WITHIN 5' OF ANY UTILITIES AND FIRE HYDRANTS.
- BLUE EMS DISKS SHALL BE INSTALLED ON THE WATER LINE AT EVERY VALVE, CHANGE IN DIRECTION, AND SERVICE.

**UTILITY DETAILS**

- 34A BELOW GROUND BACK FLOW PREVENTER (WATER)
- 36A FIRE HYDRANT ASSEMBLY (PER CITY DETAIL)
- 38A SANITARY SEWER MANHOLE (CAST IN PLACE) (PER CITY DETAIL) (CUT AND PLUG EXISTING LINE TO THE WEST)

**UTILITY NOTES**

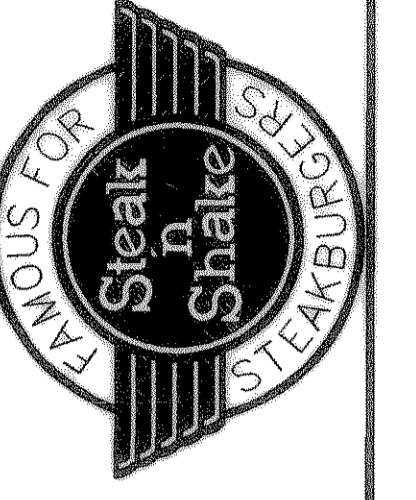
- 18A EXISTING TO BE REMOVED
- 22A POINT OF CONNECTION - WATER SERVICE (PER LOCAL CODES)
- 22B M.J. TAPPING SLEEVE WITH M.J. TAPPING VALVE AND THRUST BLOCKING WITH ADJUSTABLE VALVE BOX (SEE SIZES THIS SHEET)
- 22C M.J. GATE VALVE WITH ADJUSTABLE VALVE BOX (SEE SIZES THIS SHEET)
- 22D M.J. TEE WITH THRUST BLOCKING (SEE SIZE THIS SHEET)
- 22E 90° M.J. BEND WITH THRUST BLOCKING (SEE SIZES THIS SHEET)
- 22F 45° M.J. BEND WITH THRUST BLOCKING (SEE SIZES THIS SHEET)
- 22G 22-1/2" M.J. BEND WITH THRUST BLOCKING (SEE SIZES THIS SHEET)
- 22H METERED DOMESTIC WATER SERVICE ENTRY PER ARCH. PLANS (SEE SIZES THIS SHEET)
- 22M PROPOSED WATER METER (PER LOCAL CODES AND SPECIFICATIONS)
- 23A POINT OF CONNECTION - SANITARY SEWER SERVICE (PER LOCAL CODES)
- 23E SANITARY SEWER SERVICE ENTRY (PER ARCH. PLANS)
- 23G SANITARY SEWER CAP/PLUG (SEE SIZES THIS SHEET) TO BE MONUMENTED OR MARKED WITH T-POST
- 23H GREASE TRAP WITH CLEAN-OUT (PER ARCH. PLANS)
- 27B GAS SERVICE PER LOCAL GAS COMPANY
- 27C PROPOSED GAS METER
- 29A MAINTAIN MIN. 18" VERTICAL SEPARATION.
- 300 VERIFY LOCATION AND DEPTH OF EXISTING UTILITY BEFORE CONSTRUCTING PROPOSED UTILITY
- 306 PROPOSED UTILITIES TO BE BURIED IN THE SAME TRENCH INSTALLATION SHALL BE COORDINATED AND APPROVED BY LOCAL UTILITY COMPANIES.
- 61B IRRIGATION METER, DETECTOR CHECK VAULT, AND CONTROL VALVE (SEE IRRIGATION PLAN FOR DETAILS)
- 72A GREAT SERVICE ENTRY PER ARCH. PLANS
- 78A CONTRACTOR TO COORDINATE WITH LOCAL ELECTRIC COMPANY FOR UGE CONNECTION.
- 78B CONTRACTOR TO COORDINATE WITH LOCAL TELEPHONE COMPANY FOR UGT CONNECTION
- 78C SANITARY SEWER DOUBLE CLEAN-OUT

**AS BUILT**

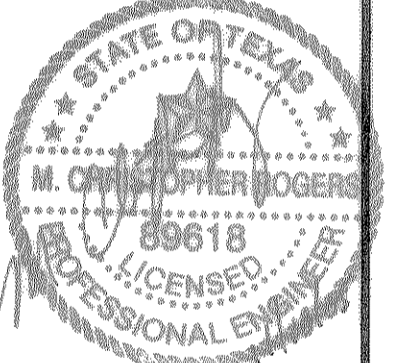
**APPLICANT/ENGINEER:**  
 CEI ENGINEERING ASSOCIATES, INC.  
 12300 FORD RD. # 110  
 DALLAS, TX 75234  
 (972) 488-3737  
 (972) 488-3732 FAX  
 CONTACT: JEFF GREEN

**DEVELOPER:**  
 STEAK 'N SHAKE, INC.  
 500 CENTURY BUILDING  
 38 S. PENNSYLVANIA ST.  
 INDIANAPOLIS, IN. 46204  
 (317) 655-4100  
 (317) 655-7317 FAX  
 CONTACT: JAY KAMMEYER

SHEET NO. C-10



**ENGINEERING ASSOCIATES, INC.**  
 ENGINEERS PLANNERS SURVEYORS  
 12300 FORD ROAD, SUITE 110  
 DALLAS, TEXAS 75234  
 JOB NO.: 19434.0  
 DATE: 08/27/04  
 PRELIM.



DATE	PRN	PM	DES	DRW	COMMENTS
08/27/04	JLB	JKG	JKG	JKG	
4-5-05					PER INITIAL CITY COMMENTS
5-10-05					PER SECOND CITY COMMENTS
REVISION NO.	DATE	JKG	JKG	JKG	COMMENTS
1					
2					

**UTILITY PLAN**  
**STEAK 'N SHAKE**  
**PROPOSED LOT 1, BLOCK A**  
**STEAK 'N SHAKE ADDITION**  
 INTERSTATE HIGHWAY 30, ROCKWALL, TEXAS