

MEADOWCREEK ESTATES
PHASE IV

STATE HIGHWAY 205

ASPHALT PAVEMENT SECTION

CAUTION!!!!
BURIED SOUTHWESTERN BELL
FIBER OPTIC-CONDUIT ONLY.
CALL 48 HOURS PRIOR TO
CONSTRUCTION. (KATHY FALKNER @ 903-457-2212)

C.R. STA.
0+20.48 (43.55' RT.)
S.H. 205 BYPASS
TC 578.98
TP 578.84

MATCHLINE STA. 10+00
(SEE SHEET NO. 4)

EXIST. FENCE TO BE REMOVED SOUTH OF CHESTERWOOD DRIVE &
REMOVED & REPLACED NORTH OF CHESTERWOOD DRIVE

STA. 3+75.48
S.H. 205 BYPASS
END CURB
CONST. STREET HEADER

STA. 3+75.48 (6.50' RT)
S.H. 205 BYPASS
END TRANSITION

STA. 3+18.25 (18.50' RT)
S.H. 205 BYPASS
BEGIN 6" CURB

C.R. STA.
0+45.48 (18.50' RT.)
S.H. 205 BYPASS
TC 579.96
TP 579.46

STA. 1+95.48 (18.50' RT)
S.H. 205 BYPASS
BEGIN TRANSITION
END 6" CURB

STA. 0+59.04 S.H. 205

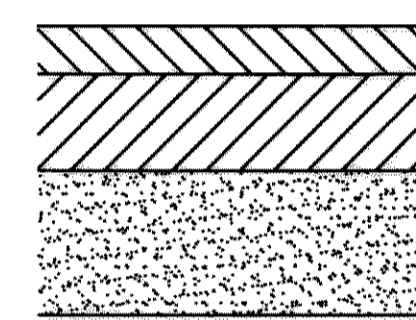
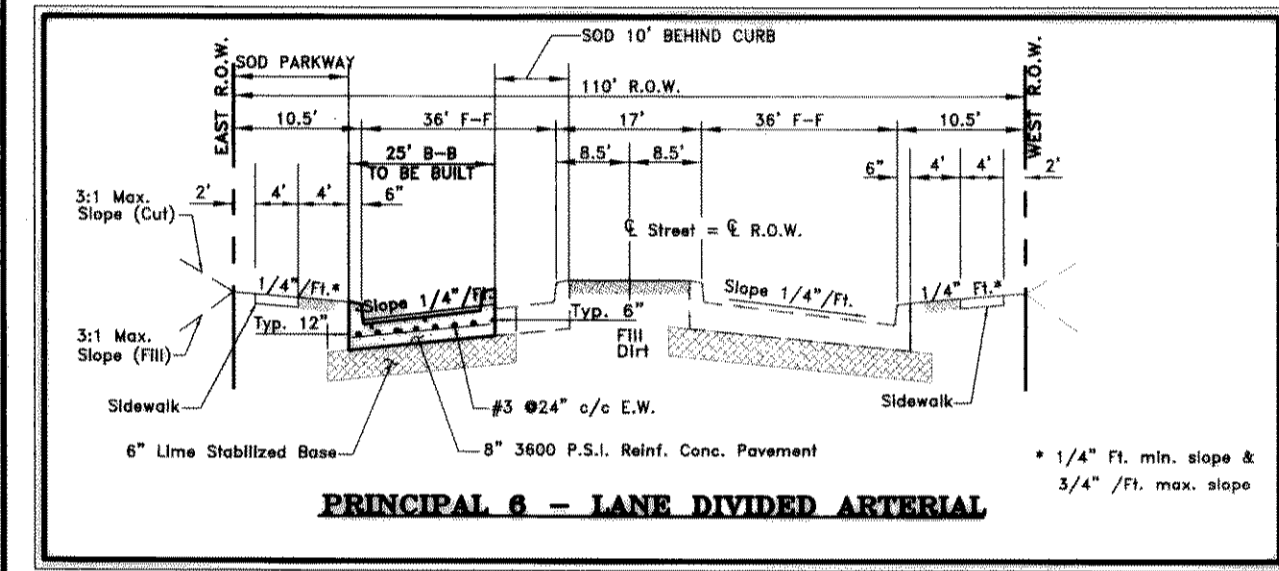
STA. 0+20.77
CONNECT TO EXIST.
ASPHALT PAVEMENT

STA. 0+00
@ S.H. 276

STATE HIGHWAY 276
(120' ROW)

ROCKWALL ISD

MELROSE FINANCIAL



STA. 0+76.94 (21.86' LT)
S.H. 205 BYPASS=
STA. 0+10.36 LAT. "S-A"
CONST. 10' RECESSED CURB INLET
TC = 580.22
FL = 576.22

STA. 0+96.25 (36.00' LT)
S.H. 205 BYPASS=
STA. 0+77.03 LINE "S"
CONST. 2'x2' TYPE "Y" INLET
TOP = 579.50
THROAT = 578.42
FL = 575.00

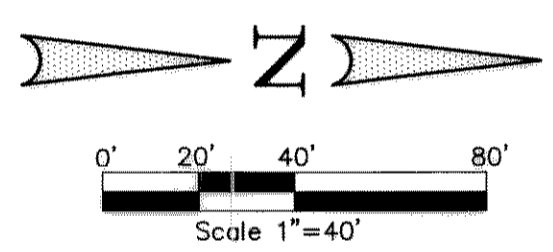
STA. 0+59.04 S.H. 205

C.R. STA.
0+45.97 (18.50' LT.)
S.H. 205 BYPASS
TC 579.96
TP 579.46

P.I. STA. 0+20.86 (18.50' LT)
TC 579.75
TP 579.25

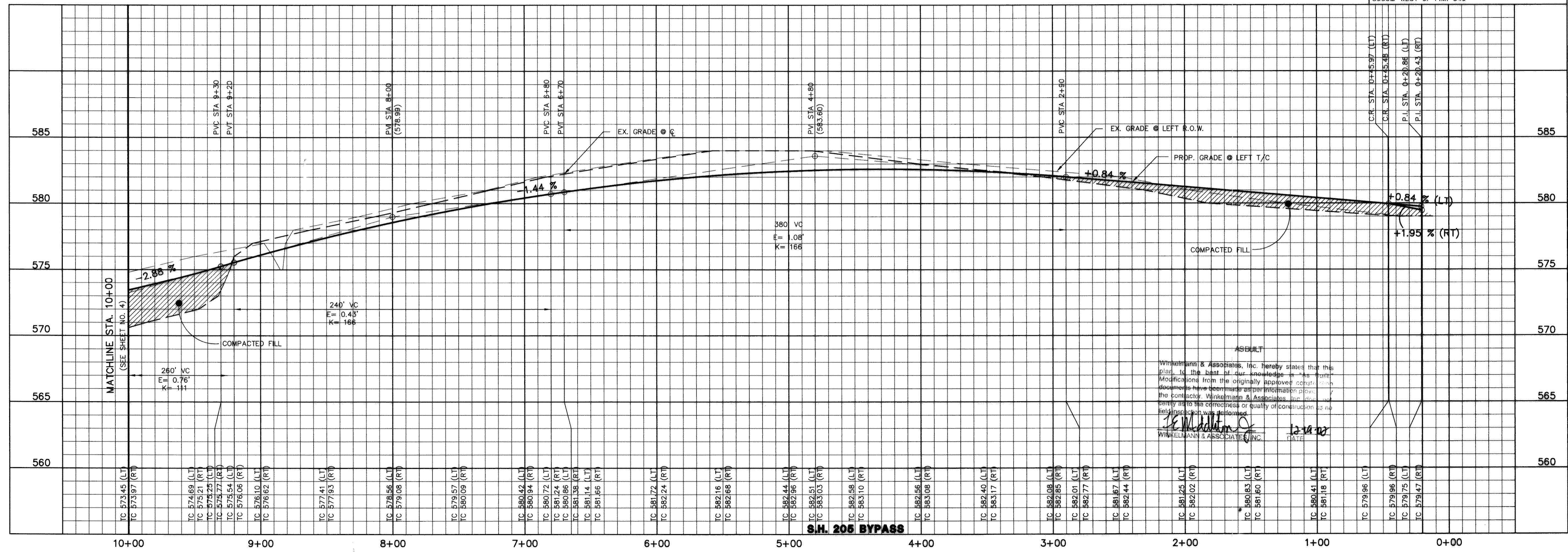
C.R. STA.
0+20.97 (43.61' LT.)
S.H. 205 BYPASS
TC 579.82
TP 579.32

10' FARMERS ELEC. CO-OP ESMT.
VOLUME 216, PAGE 176



BENCHMARK: ELEV. = 600.69
CITY OF ROCKWALL R-19
BRASS MONUMENT AT THE N/W CORNER OF
SILVERVIEW & DIAMOND WAY, 500' ± SOUTH
OF S.H. 276.

BENCHMARK: ELEV. = 583.56
R.R. SPIKE SET IN THE CENTERLINE OF S.H. 276
3600± WEST OF F.M. 549



THESE CONSTRUCTION PLANS WERE PREPARED
BY ME AND I AM A REGISTERED PROFESSIONAL
ENGINEER NO. 67449.

F. E. Middleton, Jr.
6-21-02

THE SEAL APPEARING ON THIS
DOCUMENT WAS AUTHORIZED BY
F. E. MIDDLETON, JR., P.E. #67449

APPROV. _____
REVISION _____
NO. _____ DATE _____

WinkeImann & Associates, Inc.
CONSULTING CIVIL ENGINEERS & SURVEYORS
6750 Hillcrest Plaza Drive, Suite 100
Dallas, Texas 75230
(972) 492-7000
FAX: (972) 492-7099

REGISTERED PROFESSIONAL ENGINEER
STATE OF TEXAS
NO. 67449
EXPIRES 12/31/03

W.H. BAIRD SURVEY, ABSTRACT NO. 25
CITY OF ROCKWALL
ROCKWALL COUNTY, TEXAS

CONTINENTAL HOMES
621 WEST COLLEGE STREET
GRAPEVINE TEXAS, 76051

**STATE HIGHWAY 205 BYPASS
PAVING PLAN & PROFILE
STA. 0+00 TO 10+00**

Scale: 1"=40' Date: 5-14-02

Designed By: RB
Drawn By: MK
Checked By: FEM
File: 32006p1.dwg View:
Project No.: 32006.01

SHEET
3
OF
12