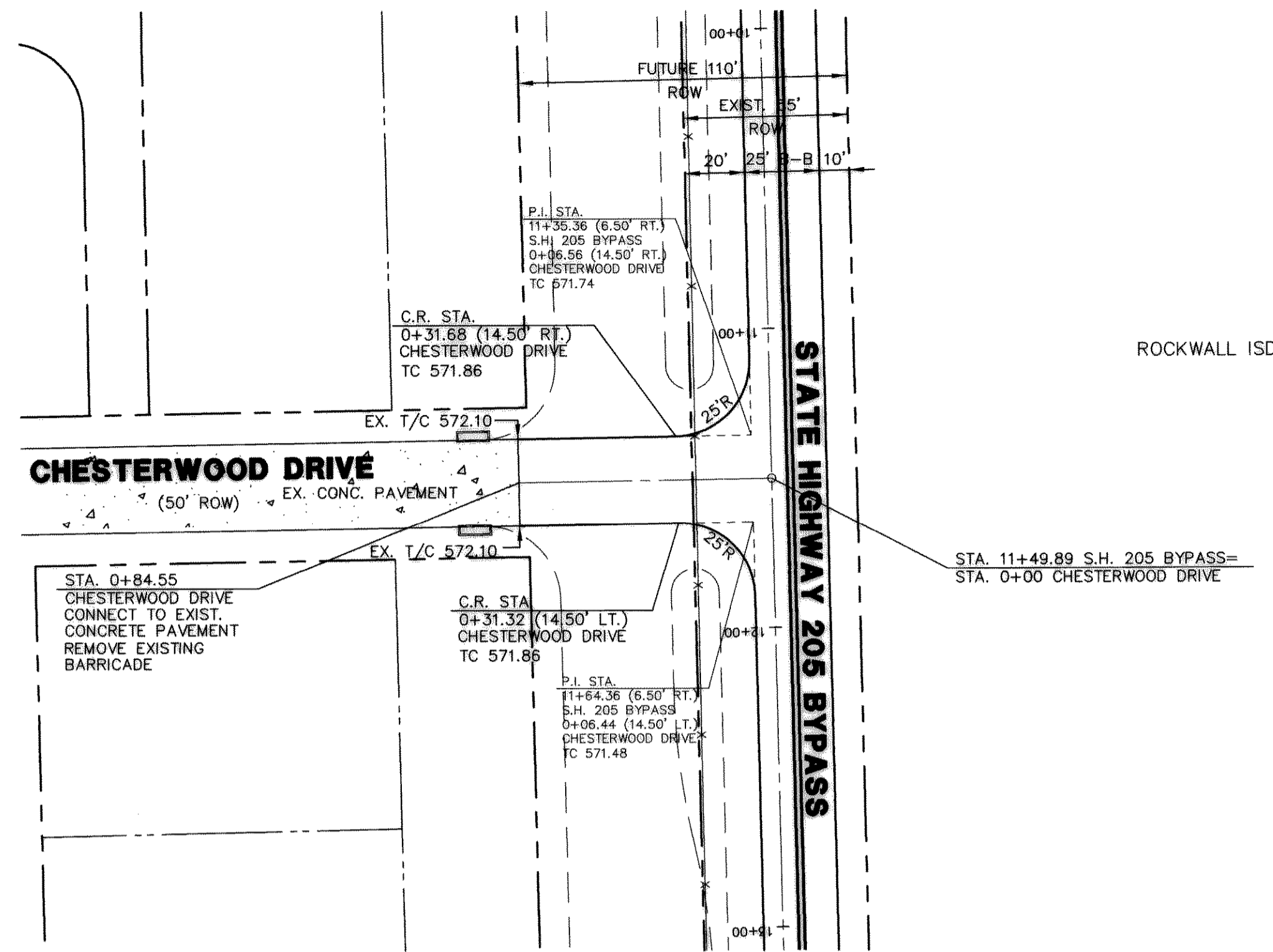


MEADOWCREEK ESTATES
PHASE IV



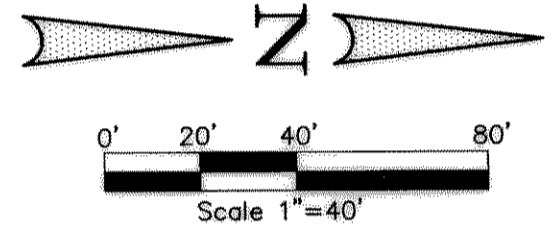
THESE CONSTRUCTION PLANS WERE PREPARED UNDER THE RESPONSIBLE SUPERVISION OF F.E. MIDDLETON, JR., REGISTERED PROFESSIONAL ENGINEER NO. 67449.

F.E. Middleton, Jr. 5-14-02

THE SEAL APPEARING ON THIS DOCUMENT WAS AUTHORIZED BY F.E. MIDDLETON, JR., P.E. #67449

NO.	DATE	REVISION	APPROV.

Winkelmann & Associates, Inc.
CONSULTING CIVIL ENGINEERS & SURVEYORS
6750 Hillcrest Plaza, Suite 100, Dallas, Texas 75230
(972) 482-7999 FAX
www.winkelmann.com

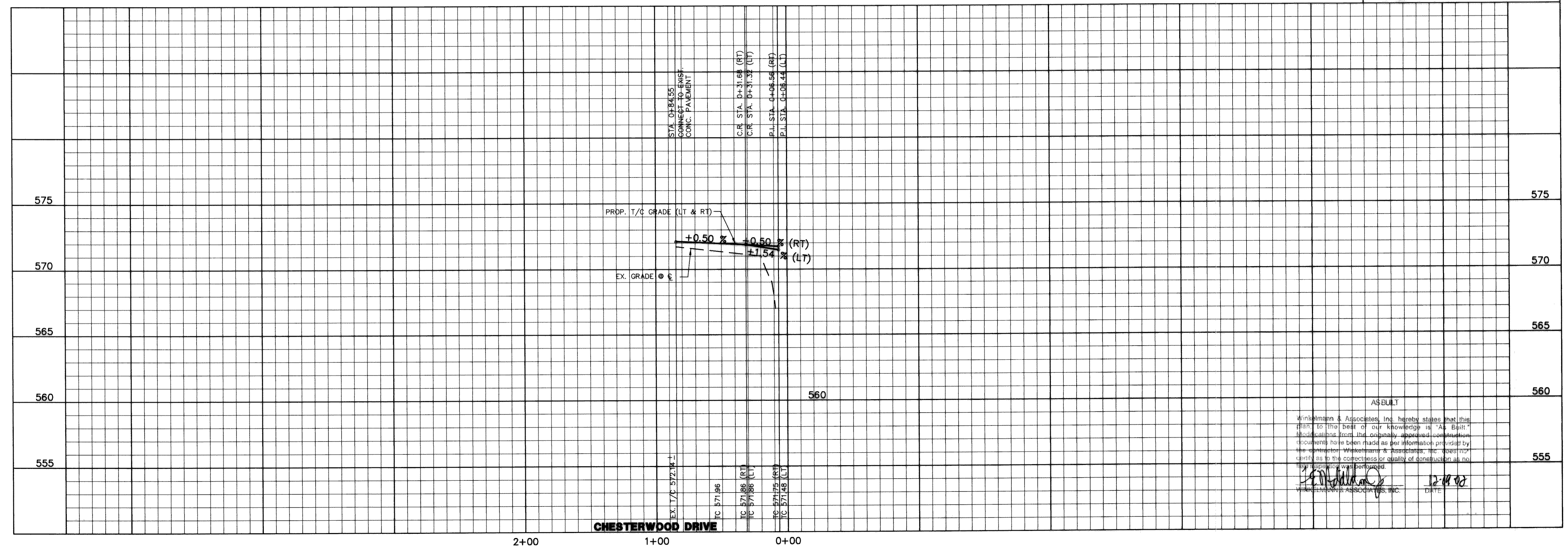


BENCHMARK: ELEV. = 600.69
CITY OF ROCKWALL R-19
BRASS MONUMENT AT THE N/W CORNER OF SILVERVIEW & DIAMOND WAY, 500' ± SOUTH OF S.H. 276.

BENCHMARK: ELEV. = 583.56
R.R. SPIKE SET IN THE CENTERLINE OF S.H. 276
3600± WEST OF F.M. 549

W.H. BAIRD SURVEY, ABSTRACT NO. 25
CITY OF ROCKWALL
ROCKWALL COUNTY, TEXAS
CONTINENTAL HOMES
621 WEST COLLEGE STREET
GRAPEVINE TEXAS, 76051

**CHESTERWOOD DRIVE
PAVING PLAN & PROFILE
STA. 0+00 TO 0+84.55**



Winkelmann & Associates, Inc. hereby states that this plan to the best of our knowledge is "As Built" and is drawn from the original approved construction documents to have been made as per information provided by the contractor. Winkelmann & Associates, Inc. does not certify as to the correctness or quality of construction as no field inspection was performed.

F.E. Middleton, Jr. 5-14-02
DATE

Scale: 1"=40' Date: 5-14-02

Designed By: RB
Drawn By: MK
Checked By: FEM
File: 32006p3.dwg View:
Project No.: 32006.01

SHEET 6 OF 12