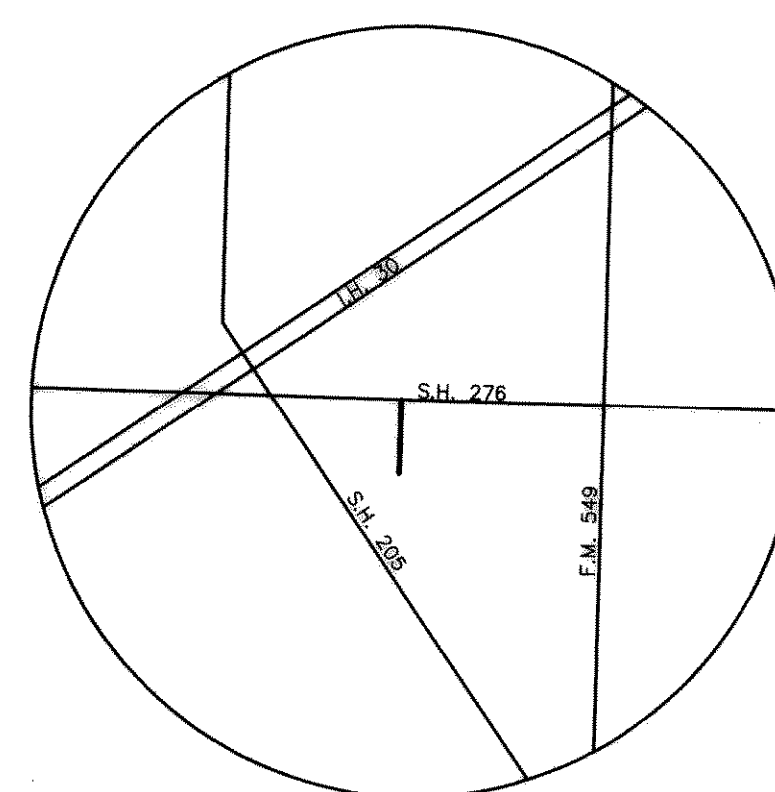


# CONSTRUCTION PLANS FOR STATE HIGHWAY 205 BYPASS

S.H. 205 BYPASS



LOCATION MAP

## SHEET INDEX

- COVER SHEET
- 1. DRAINAGE AREA MAP
- 2. DRAINAGE CALCULATIONS
- PAVING PLANS & PROFILES
- 3. STATE HIGHWAY 205 BYPASS  
STA. 0+00 TO STA. 10+00
- 4. STATE HIGHWAY 205 BYPASS  
STA. 10+00 TO STA. 20+10.50
- 5. PAVING & STRIPING PLAN FOR S.H. 276  
STA. 0+00 TO STA. 0+84.55
- 7. STORM SEWER PLAN
- STORM SEWER PROFILES
- 8. LINE "1" & LINE "2"
- 9. LINE "3", LINE "4", LINE "5" & LINE "6"
- 10. 12" WATER PLAN
- 11. STORM WATER POLLUTION PREVENTION PLAN
- 12. STORM WATER POLLUTION PREVENTION DETAILS

ALL CONTRACTORS TO USE STANDARD DETAILS  
PER CITY OF ROCKWALL.

CITY OF ROCKWALL

ROCKWALL COUNTY, TEXAS

ROCKWALL INDEPENDENT  
SCHOOL DISTRICT  
801 EAST WASHINGTON  
ROCKWALL, TEXAS 75087

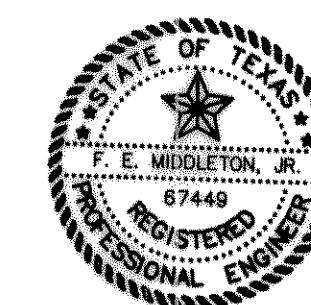
DEVELOPER:  
CONTINENTAL HOMES  
621 WEST COLLEGE STREET  
GRAPEVINE, TEXAS 76051

JUNE 21, 2002

AS BUILT

Winkelmann & Associates, Inc. hereby states that this plan, to the best of our knowledge is "As Built." Modifications from the originally approved construction documents have been made as per information provided by the contractor. Winkelmann & Associates, Inc. does not certify as to the correctness or quality of construction as no field inspection was performed.  
*F.E. Middleton, Jr.*  
WINKELMANN & ASSOCIATES, INC. DATE 12-19-02

THESE CONSTRUCTION PLANS WERE PREPARED UNDER THE RESPONSIBLE SUPERVISION OF F.E. MIDDLETON, JR., REGISTERED PROFESSIONAL ENGINEER NO. 67449.  
THE SEAL APPEARING ON THIS DOCUMENT WAS AUTHORIZED BY F.E. MIDDLETON, JR., P.E. #67449  
*F.E. Middleton, Jr.* 6-21-02



**Winkelmann & Associates, Inc.**

CONSULTING CIVIL ENGINEERS ■ SURVEYORS  
6750 HILLCREST PLAZA DRIVE, SUITE 100 (972) 490-7090  
DALLAS, TEXAS 75230 (972) 490-7099 FAX