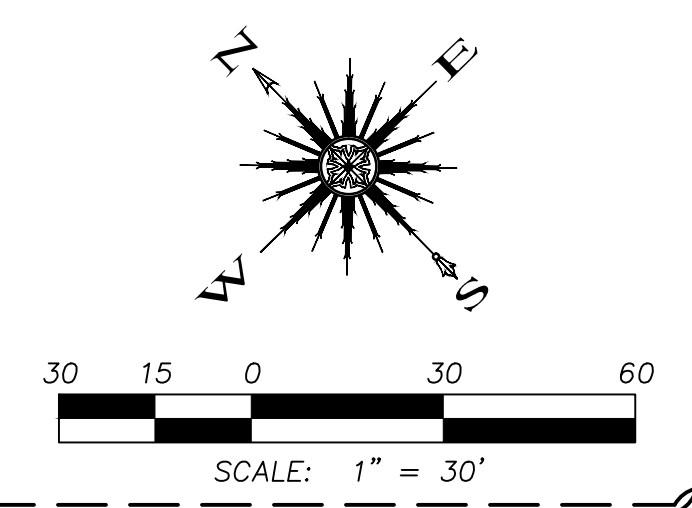


**SANITARY SEWER S.S.-2  
NOTES BY SYMBOL**

- 1 STA. 1+57 ~ SS-1=  
STA. 0+00 ~ SS-2  
INSTALL:  
1-6"x8" WYE  
FL 453.83
- 2 STA. 0+05 ~ SS-2  
INSTALL:  
1-8" 22.5° BEND
- 3 STA. 0+11 ~ SS-2  
INSTALL:  
1-8" 22.5° BEND  
1-8" CLEANOUT
- 4 STA. 1+24 ~ SS-2  
INSTALL:  
1-8" 22.5° BEND
- 5 STA. 1+44 ~ SS-2  
INSTALL:  
1-8" 22.5° BEND
- 6 STA. 1+54 ~ SS-2  
INSTALL:  
1-8" 22.5° BEND
- 7 STA. 1+76 ~ SS-2  
INSTALL:  
1-8" 22.5° BEND
- 8 STA. 1+91 ~ SS-2  
INSTALL:  
1-8" 22.5° BEND
- 9 STA. 2+04 ~ SS-2  
INSTALL:  
1-8" 22.5° BEND

INTERSTATE HIGHWAY NO. 30  
(VARIABLE WIDTH R.O.W.)



**CAUTION EXISTING UTILITIES !!!**  
CALL TEXAS 811!!! EXISTING UTILITIES AND UNDERGROUND FACILITIES INDICATED ON THESE PLANS HAVE BEEN LOCATED FROM REFERENCE INFORMATION. IT SHALL BE THE RESPONSIBILITY OF THE CONTRACTOR TO VERIFY BOTH HORIZONTALLY AND VERTICALLY THE LOCATION OF ALL EXISTING UTILITIES AND UNDERGROUND FACILITIES PRIOR TO CONSTRUCTION, TO TAKE THE NECESSARY PRECAUTIONS IN ORDER TO PROTECT ALL FACILITIES ENCOUNTERED. THE CONTRACTOR SHALL PRESERVE AND PROTECT ALL EXISTING UTILITIES FROM DAMAGE DURING CONSTRUCTION.

**LEGEND**

- PROPERTY LINE
- W --- W --- EXISTING WATER LINE
- SS --- SS --- EXISTING SANITARY SEWER LINE
- W --- W --- PROPOSED WATER LINE
- SS --- SS --- PROPOSED SANITARY SEWER LINE
- GAS --- GAS --- PROPOSED GAS LINE
- TELE --- TELE --- PROPOSED TELEPHONE SERVICE
- ELEC --- ELEC --- PROPOSED ELECTRIC SERVICE

**FRANCHISE UTILITY CONTACTS**

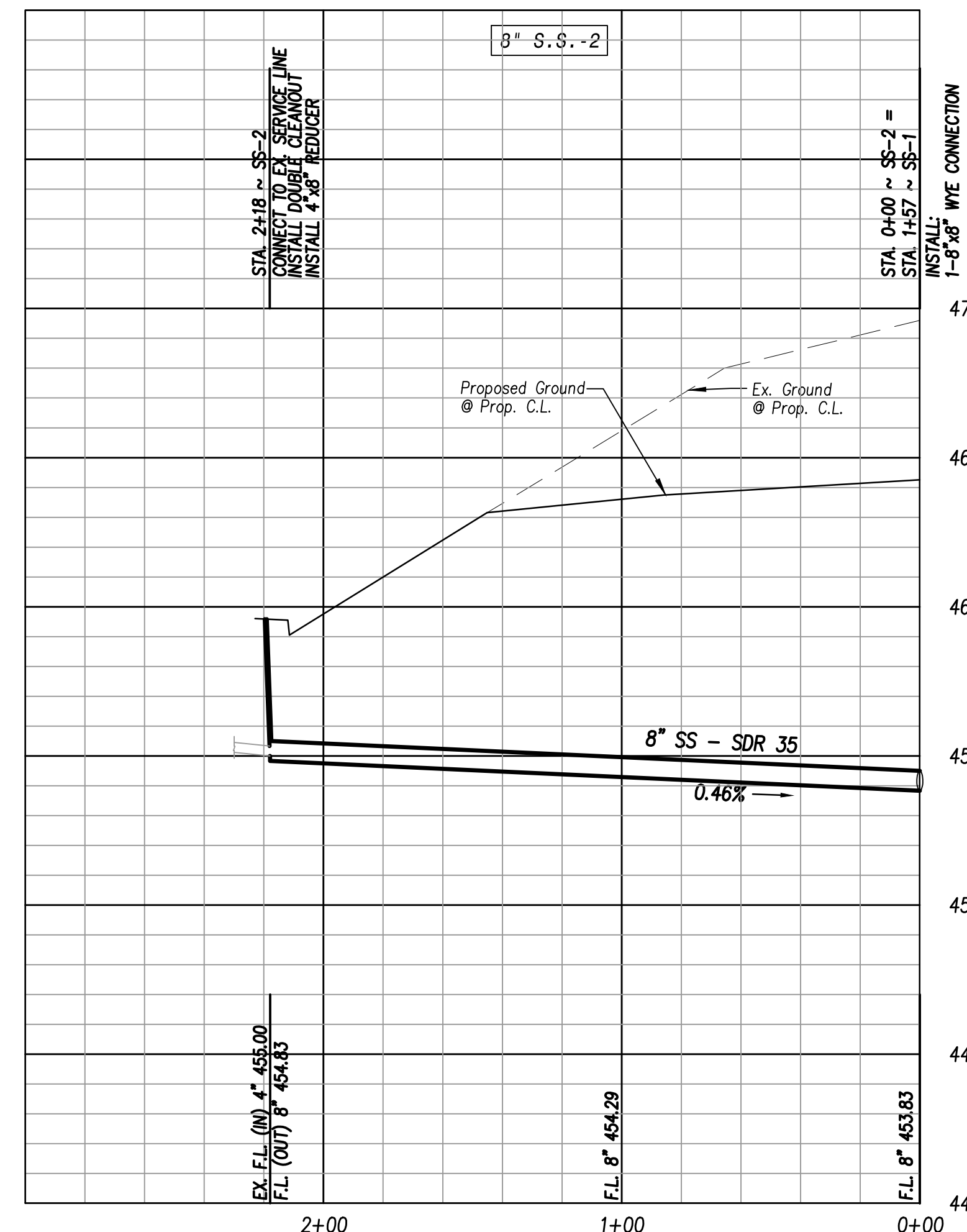
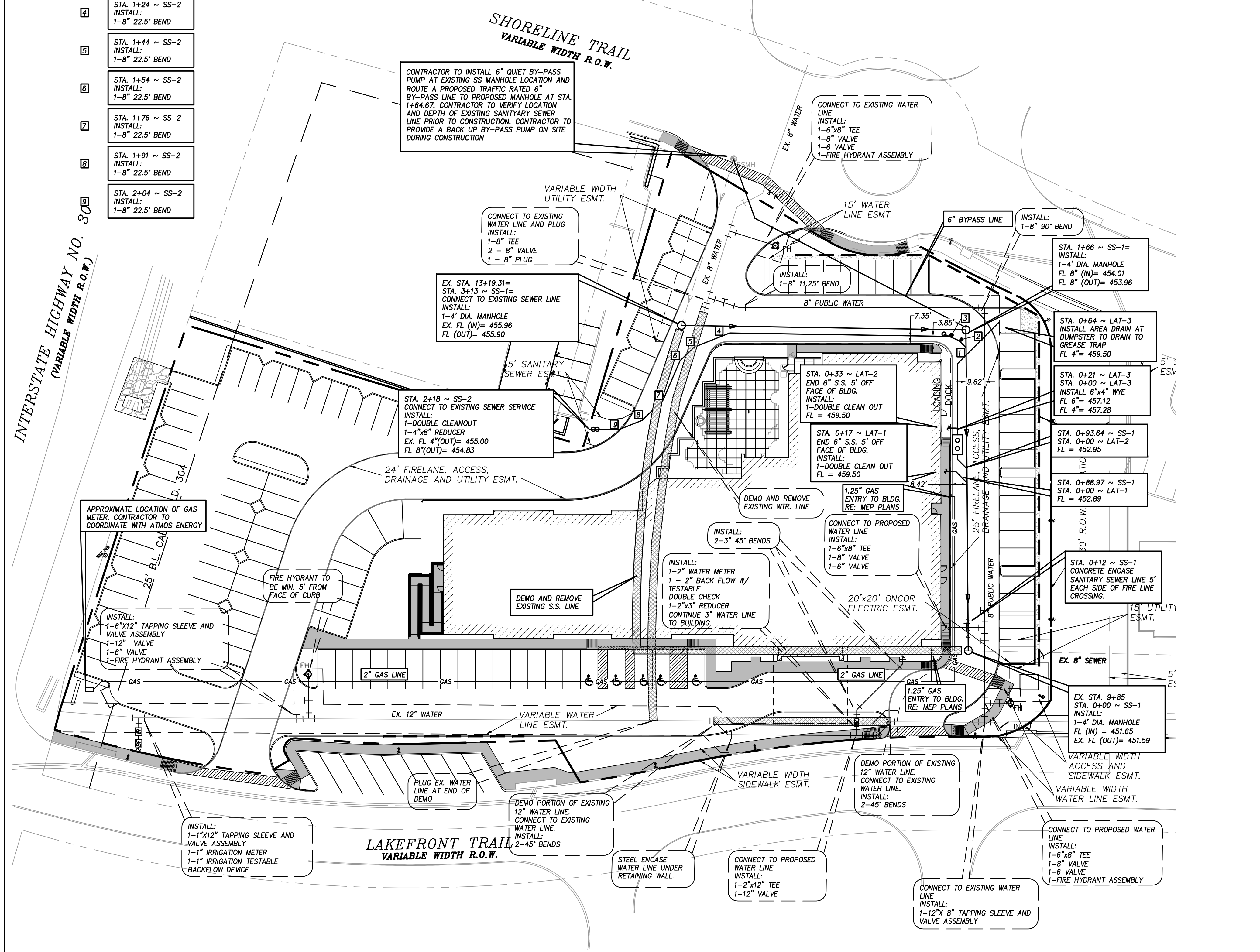
**ELECTRIC:**  
CONTACT: ONCOR ELECTRIC  
PHONE: RANDY VOIGHT (972) 551-7233

**GAS:**  
CONTACT: ATMOS ENERGY  
PHONE: DINAH WOOD (972) 485-6277

**TELEPHONE:**  
CONTACT: AT&T  
PHONE: SCOTT ULRICH (903) 457-2303

**NOTES:**

- CONTRACTOR TO INSTALL GREEN EMS DISKS ON THE SEWER LINE AT EVERY MANHOLE, CLEANOUT AND SERVICE ON PUBLIC LINE.
- CONTRACTOR TO INSTALL BLUE EMS DISKS ON WATER LINE, VALVES, CHANGES IN DIRECTION AND SERVICES.
- WATER LINE SERVICE PAST CITY METER WILL NEED TO BE INSTALLED BY REGISTERED PLUMBER.
- WATER LINE TO BE CLASS 200 DR 14.
- ALL MANHOLES TO BE RAVEN LINED OR APPROVED EQUAL.



2+00 1+00 0+00  
This drawing is proprietary and may not be copied or used in any way without the written permission of FC Cury Corporation. © Copyright - FC Cury Corporation  
RECORD DRAWING

Revision	Date	Description

**TEKMAK Development Company**

10000 N. Central Expressway, Suite 400  
Dallas, TX 75231  
Phone: (214) 890-9225

**SPRINGHILL SUITES Marriott**

~ Civil Engineer ~  
**F.C. CUNY CORPORATION**  
#2 Horizon Court • Heath, Texas 75032 • (469) 402-7700  
Texas Registered Engineering Firm F-7449

7/5/2017

Drawn By: F.C. CUNY	Checked By: F.C. CUNY
Date: 05/15	Project No.:
Sheet Title: <b>Utility Plan</b>	
Scale: 1" = 30'	Sheet No.: