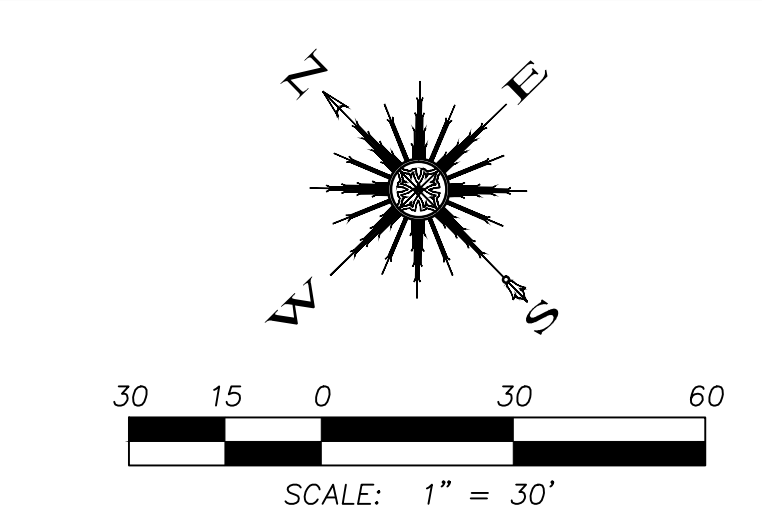


SANITARY SEWER S.S.-2
NOTES BY SYMBOL

- 1 STA. 1+57 ~ SS-1=
- 2 STA. 0+00 ~ SS-2
- 3 STA. 0+05 ~ SS-2
- 4 STA. 0+11 ~ SS-2
- 5 STA. 1+24 ~ SS-2
- 6 STA. 1+44 ~ SS-2
- 7 STA. 1+54 ~ SS-2
- 8 STA. 1+76 ~ SS-2
- 9 STA. 1+91 ~ SS-2
- 10 STA. 2+04 ~ SS-2



CAUTION EXISTING UTILITIES !!!
CALL TEXAS 811!!! EXISTING UTILITIES AND UNDERGROUND FACILITIES INDICATED ON THESE PLANS HAVE BEEN LOCATED FROM REFERENCE INFORMATION. IT SHALL BE THE RESPONSIBILITY OF THE CONTRACTOR TO VERIFY BOTH HORIZONTALLY AND VERTICALLY THE LOCATION OF ALL EXISTING UTILITIES AND UNDERGROUND FACILITIES PRIOR TO CONSTRUCTION, TO TAKE THE NECESSARY PRECAUTIONS IN ORDER TO PROTECT ALL FACILITIES ENCOUNTERED. THE CONTRACTOR SHALL PRESERVE AND PROTECT ALL EXISTING UTILITIES FROM DAMAGE DURING CONSTRUCTION.

LEGEND

- PROPERTY LINE
- W --- W --- EXISTING WATER LINE
- SS --- SS --- EXISTING SANITARY SEWER LINE
- W --- W --- PROPOSED WATER LINE
- SS --- SS --- PROPOSED SANITARY SEWER LINE
- GAS --- GAS --- PROPOSED GAS LINE
- TELE --- TELE --- PROPOSED TELEPHONE SERVICE
- ELEC --- ELEC --- PROPOSED ELECTRIC SERVICE

FRANCHISE UTILITY CONTACTS

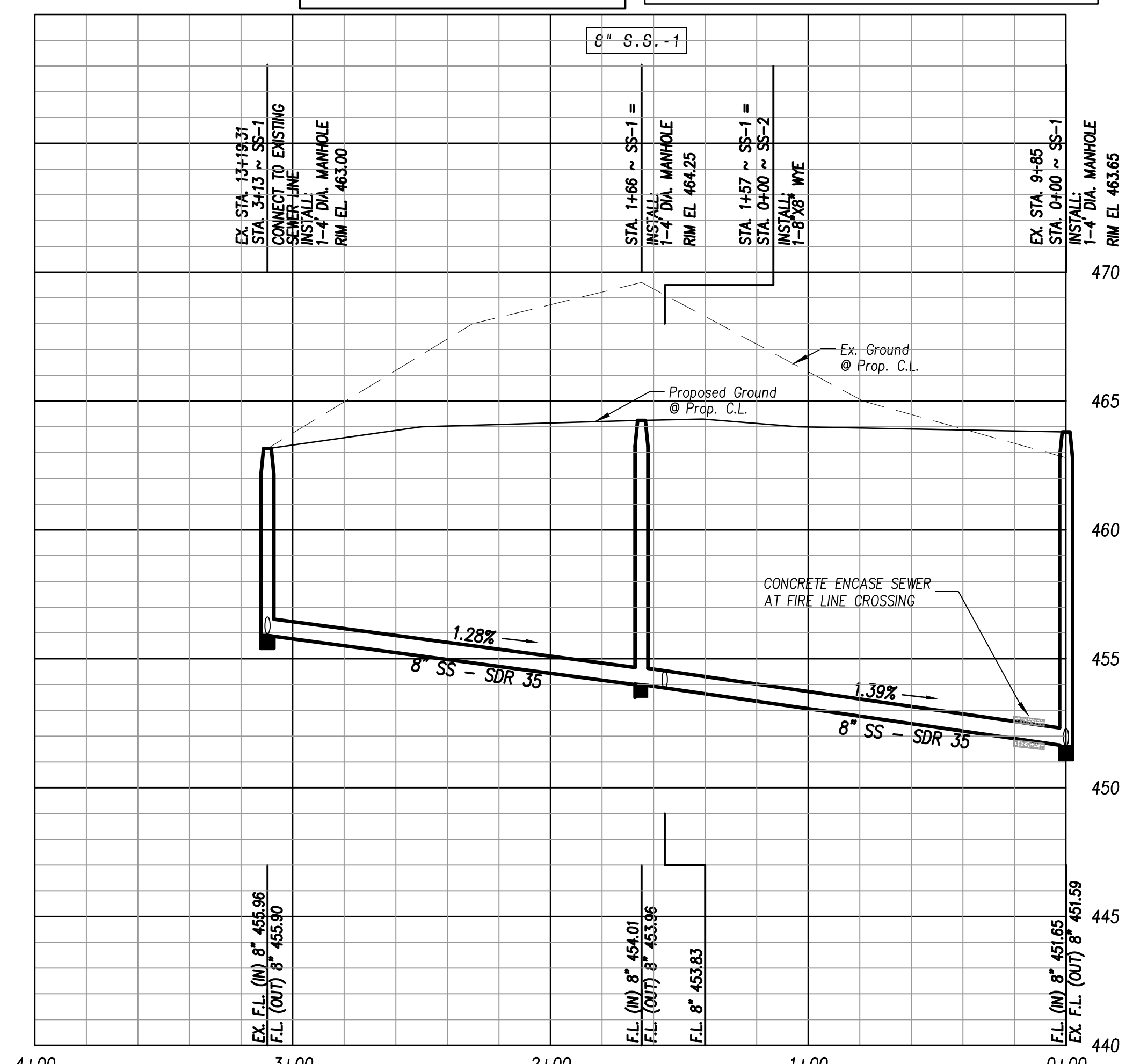
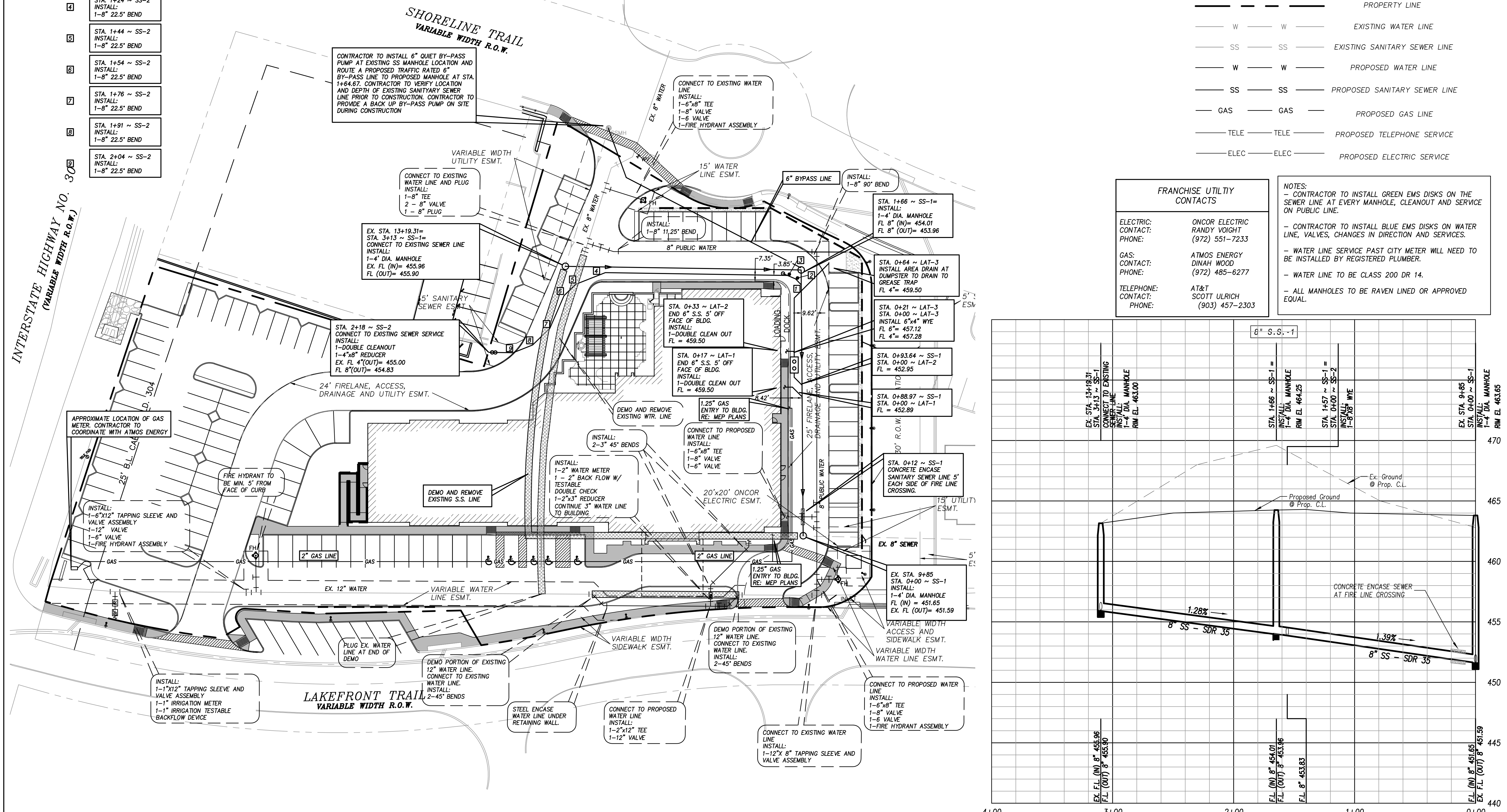
ELECTRIC:
CONTACT: ONCOR ELECTRIC
PHONE: RANDY VOIGHT (972) 551-7233

GAS:
CONTACT: ATMOS ENERGY
PHONE: DINAH WOOD (972) 485-6277

TELEPHONE:
CONTACT: AT&T
PHONE: SCOTT ULRICH (903) 457-2303

NOTES:

- CONTRACTOR TO INSTALL GREEN EMS DISKS ON THE SEWER LINE AT EVERY MANHOLE, CLEANOUT AND SERVICE ON PUBLIC LINE.
- CONTRACTOR TO INSTALL BLUE EMS DISKS ON WATER LINE, VALVES, CHANGES IN DIRECTION AND SERVICES.
- WATER LINE SERVICE PAST CITY METER WILL NEED TO BE INSTALLED BY REGISTERED PLUMBER.
- WATER LINE TO BE CLASS 200 DR 14.
- ALL MANHOLES TO BE RAVEN LINED OR APPROVED EQUAL.



| Revision | Date | Description |
|----------|------|-------------|
| | | |
| | | |
| | | |

Owner: **TEKMAK Development Company**

10000 N. Central Expressway, Suite 400
Dallas, TX 75231
Phone: (214) 890-9225

SPRINGHILL SUITES Marriott

~ Civil Engineer ~
F.C. CUNY CORPORATION
#2 Horizon Court • Heath, Texas 75032 • (409) 402-7700
Texas Registered Engineering Firm F-7449

7/5/2017

Drawn By: F.C. CUNY
Checked By: F.C. CUNY
Date: 05/15
Project No.:
Sheet Title: **Utility Plan**
Scale: 1" = 30"
Sheet No.: 11A of 11

This drawing is proprietary and may not be copied or used in any way without the written permission of FC Cuny Corporation. © Copyright - FC Cuny Corporation

RECORD DRAWING