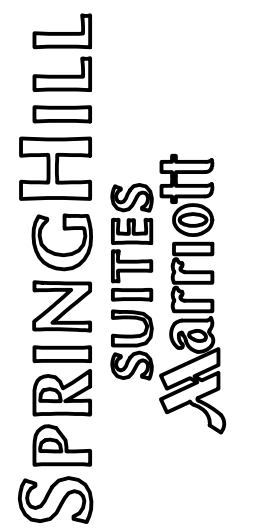


Revision	Date	Description

Owner:  
**TEKMAK Development Company**

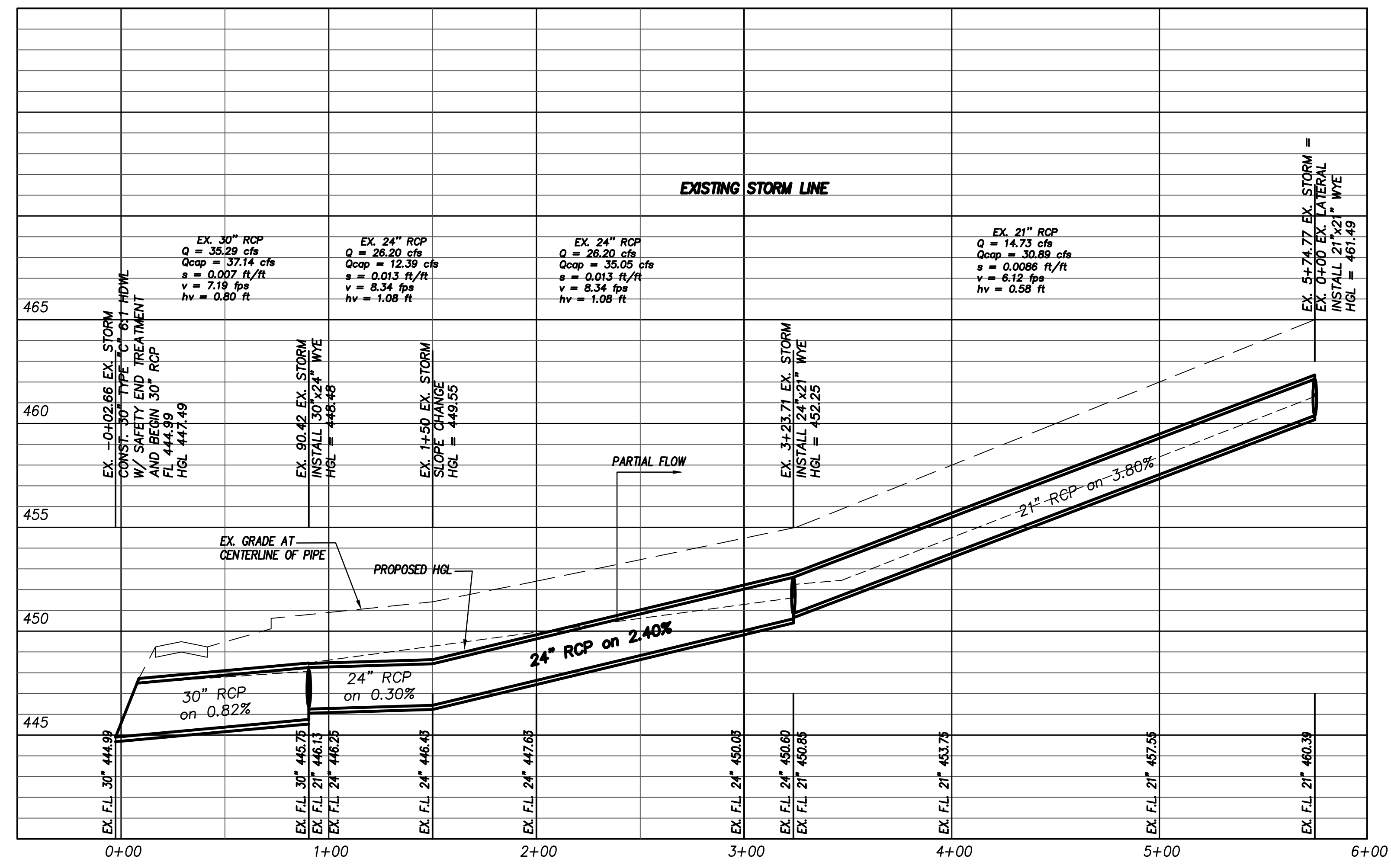
10000 N. Central Expressway, Suite 400  
 Dallas, TX 75231  
 Phone: (214) 890-9225



RUNOFF COLLECTION			Distance	Area	Drainage	Run-off	Accumulated	Design Storm	Intensity	Storm Water	Pipe Capacity	Pipe	Conveyance	Hydraulic	Selected	Flowline	Flowline	HGL	HGL	Ground	Ground	Pipe	Pipe	Velocity	Head Loss	Velocity Head loss		
Downstream Station	Upstream Station	Between Points	No.	Area	coefficient	"CA"	Frequency	"I"	Runoff	Q(cap)	Slope S	K	Slope Sf	Pipe Size	Elevation	Elevation	Elevation	Elevation	Elevation	Elevation	Elevation	Cover	Cover	In Sewer	Coefficient	(Upstream)		
Station	Station	Points	"A" (Acres)	"C"	(years)	(in/hr)	Q(des)=Q (cfs)	cfs	(ft/ft)	(in)	(ft/ft)	(in)	(ft/ft)	(in)	Downstream	Upstream	Downstream	Upstream	Downstream	Upstream	Downstream	Upstream	Downstream	Upstream	(fps)	Kj	V2/2g	
0+46.99	0+75.97	28.98	OS-1	0.4	0.90	0.36	100	9.80	3.53	26.28	0.028	158.45	0.0005	21	461.74	462.54	462.45	462.80	466.60	467.90	3.11	3.61	1.47	1.25	0.03			
0+00.00	0+46.99	46.99	OS-1, OS-2, OS-3, OS-4	1.67	0.90	1.50	100	9.80	14.73	26.28	0.028	158.45	0.0086	21	460.45	461.74	461.49	461.90	464.50	466.60	2.30	3.11	6.12	0.75	0.58			
0+00.00	0+09.00	9.00	OS-1, OS-2, OS-3, OS-4	1.67	0.90	1.50	100	9.80	14.73	12.97	0.007	158.45	0.0086	21	460.39	460.45	461.41	461.49	464.50	464.50	2.36	2.30	6.12	0.35	0.58			
3+23.71	5+74.77	251.06	OS-1, OS-2, OS-3, OS-4	1.67	0.90	1.50	100	9.80	14.73	30.89	0.038	158.45	0.0086	21	450.85	460.39	452.25	461.27	454.90	464.50	2.30	2.36	6.12	0.75	0.58			
0+00.00	0+08.50	8.50	3, 4	1.30	0.90	1.17	100	9.80	11.47	55.95	0.125	158.45	0.0052	21	450.73	451.79	452.43	452.47	454.90	454.70	2.42	1.16	4.77	0.75	0.35			
1+50.00	3+23.71	173.71	3, 4, OS-1, OS-2, OS-3, OS-4	2.97	0.90	2.67	100	9.80	26.20	35.05	0.024	226.22	0.0134	24	446.43	450.60	449.28	451.61	451.20	454.90	2.77	2.30	8.34	0.75	1.08			
0+90.42	1+50.00	59.58	3, 4, OS-1, OS-2, OS-3, OS-4	2.97	0.90	2.67	100	9.80	26.20	12.39	0.003	226.22	0.0134	24	446.25	446.43	448.48	449.28	450.50	451.20	2.25	2.77	8.34	0.00	1.08			
0+00.00	0+25.00	25.00	1	0.47	0.90	0.42	100	9.80	4.15	24.78	0.012	226.22	0.0003	24	446.65	446.95	449.29	449.30	450.94	451.30	2.29	2.35	1.32	0.75	0.03			
0+00.00	0+10.50	10.50	1, 2	1.03	0.90	0.93	100	9.80	9.08	31.38	0.039	158.45	0.0033	21	446.13	446.54	449.13	449.16	450.50	450.53	2.62	2.24	3.78	0.75	0.22			
-0+02.66	0+90.42	93.08	1, 2, 3, 4, OS-1, OS-2, OS-3, OS-4	4.00	0.90	3.60	100	9.80	35.28	37.14	0.008	410.17	0.0074	30	444.99	445.75	447.49	448.49	444.99	450.50	-2.50	2.25	7.19	0.75	0.80			

- EX STORM LINE
- EX LATERAL
- LINE B (PHASE 2)
- LINE C

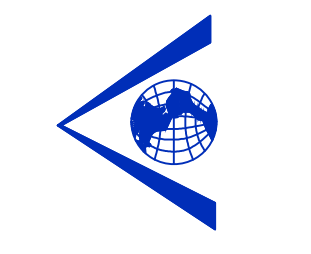
NOTE: CONSTRUCTION FOR LINE "B" AND INLET 1 WILL TAKE PLACE IN PHASE 2 OF THIS PROJECT.



SCALE: V: 1"=4'  
 H: 1"=40'

This drawing is proprietary and may not be copied or used in any way without the written permission of FC Cunny Corporation - Copyright - FC Cunny Corporation

~ Civil Engineer ~  
**F.C. CUNY CORPORATION**  
 #2 Horizon Court • Heath, Texas 75032 • (469) 402-7700  
 Texas Registered Engineering Firm F-7449



7/5/2017  
 Drawn By: F.C. CUNY  
 Checked By: F.C. CUNY

Date: 05/15  
 Project No.: -

Sheet Title:  
**Storm Sewer and Inlet Calculations**

Scale: NTS  
 Sheet No.: 10 of 11

RECORD DRAWING