

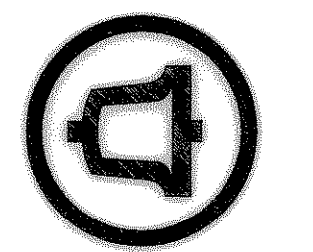


JPJ/BSA ALLIANCE  
2711 N. Haskell Avenue  
Suite 2200  
Dallas, Texas 75204  
Voice 214 824-3800  
Fax 214 824-0707



RAYMOND L. GODDSON JR., INC.  
CONSULTING ENGINEERS  
SUITE 200, 5445 LA BARRA DRIVE  
DALLAS, TEXAS 75237 214/733-8100

**Rockwall '722' C. O. Addition**  
 Rockwall, Texas  
 for Southwestern Bell Telephone



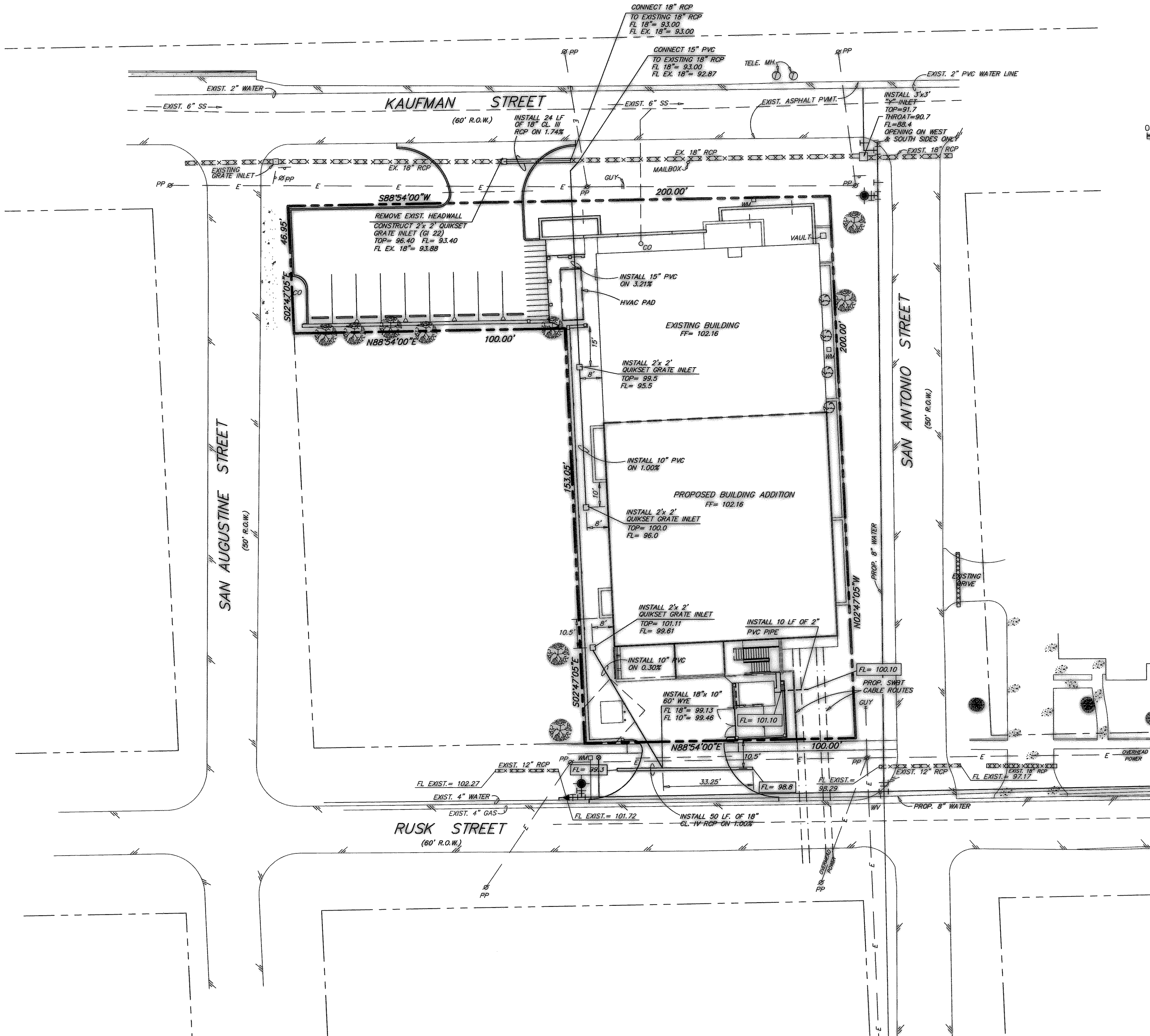
Drawn By RLG  
Checked By RLG

Revisions  
7-2-99

Sheet Title  
**STORM SEWER PLAN**

Project Number 01216  
Date 2-24-99  
Location Code T3-6966

Sheet No. **C-4**  
of Sheets



**GENERAL NOTES**

1. All materials and workmanship shall conform to the City of Rockwall Standards and Specifications.
2. All drainage structures shall be 3000 PSI concrete at 28 days.
3. A minimum of class III reinforced concrete pipe shall be used on all storm sewer systems unless otherwise noted. Ram neck shall be used on all pipe joints unless prior approval received.
4. All backfill shall be compacted to 95% Standard Proctor maximum dry density (ASTM D 698) in six inch lifts.
5. Water jetting will not be allowed.

**LEGEND**

- ==== PROPOSED STORM SEWER PIPE
- ==== PROPOSED WATER LINE
- PROPOSED PVC SLEEVE

**BENCHMARKS:**

1. SWBT PROPERTY CORNER MONUMENT, ON SOUTHEAST CORNER, AT INTERSECTION OF NORTH R.O.W. LINE OF RUSK ST. & WEST R.O.W. LINE OF SAN ANTONIO ST. ELEV. 100.00
2. SWBT PROPERTY CORNER MONUMENT, ON SOUTHWEST CORNER, ON NORTH R.O.W. LINE OF RUSK ST. ELEV. 102.57



**RECORD DRAWING**  
 THESE RECORD DRAWINGS HAVE BEEN PREPARED, IN PART, ON THE BASIS OF INFORMATION COMPILED AND FURNISHED BY OTHERS. THE ENGINEER WILL NOT BE RESPONSIBLE FOR ANY ERRORS OR OMISSIONS WHICH HAVE BEEN INCORPORATED INTO THIS DOCUMENT AS A RESULT.  
 DATE 2-4-02