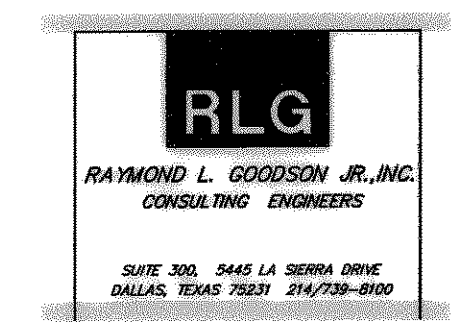
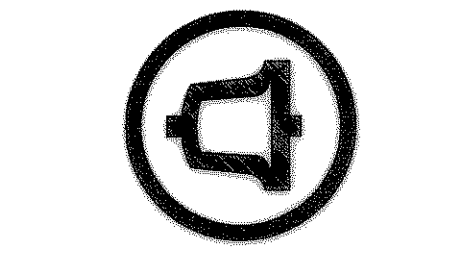


JPJ/BSA ALLIANCE
2711 N. Haskell Avenue
Suite 2200
Dallas, Texas 75204
Voice 214 824-3800
Fax 214 824-0707

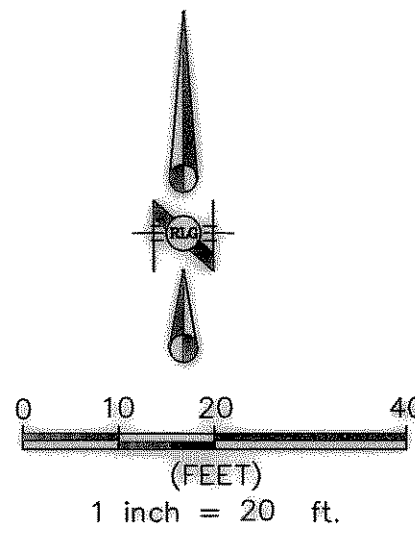
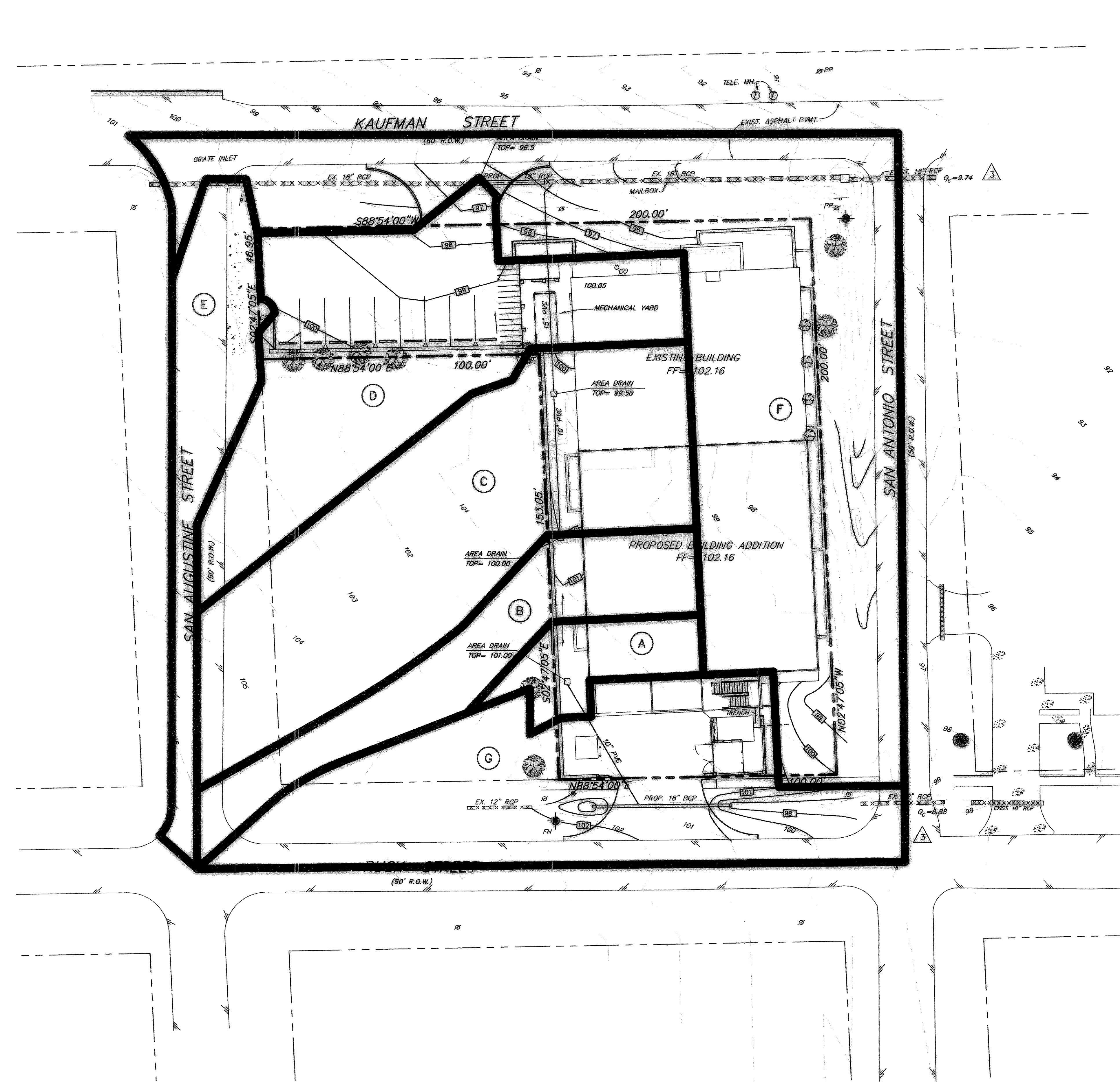


Rockwall '722' C. O. Addition
 Rockwall, Texas
 for
 Southwestern Bell Telephone



Drawn By RLG
Checked By RLG
Revisions
1 7-2-99
3 8-16-99

Sheet Title
**DRAINAGE
AREA MAP**
Project Number 01216
Date 4-16-99
Location Code T3-6966
Sheet No. **C-3A**
of Sheets



LEGEND

- 1/2" x 1/2" RS IRON ROD FOUND/SET
- IRRIGATION BOX
- TREE
- ⊙ TELEPHONE MANHOLE
- ⊙ LANDSCAPE LIGHT
- ⊙ LIGHT STANDARD
- ⊙ WASTEWATER MANHOLE
- ⊙ STORM SEWER MANHOLE
- FH ○ FIRE HYDRANT
- WM ○ WATER METER
- 682 EXISTING CONTOUR LINE
- 683 PROPOSED CONTOUR LINE
- FLOW ARROW
- DRAINAGE DIVIDE LINE
- (H) DRAINAGE AREA NUMBER

INLET CALCULATIONS						
DRAINAGE CALCULATIONS Q=CIA						
DRAINAGE AREA	AREA (Acres)	C	Time of Conc. (Min.)	I ₁₀₀	Q ₁₀₀	Remarks
A	0.04	0.9	10	9.8	0.35	2'x 2' GRATE INLET
B	0.11	0.9	10	9.8	0.97	2'x 2' GRATE INLET
C	0.30	0.9	10	9.8	2.65	2'x 2' GRATE INLET
D	0.27	0.9	10	9.8	2.38	2'x 2' GRATE INLET
E	0.10	0.9	10	9.8	0.88	EXISTING GRATE INLET
F	0.53	0.9	10	9.8	4.67	EXISTING 18" RCP
G	0.26	0.9	10	9.8	2.29	EXISTING 12" PIPE

BENCHMARKS:

- SWBT PROPERTY CORNER MONUMENT, ON SOUTHEAST CORNER, AT INTERSECTION OF NORTH R.O.W. LINE OF RUSK ST. & WEST R.O.W. LINE OF SAN ANTONIO ST. ELEV. 100.00
- SWBT PROPERTY CORNER MONUMENT, ON SOUTHWEST CORNER, ON NORTH R.O.W. LINE OF RUSK ST. ELEV. 102.57



RECORD DRAWING
THESE RECORD DRAWINGS HAVE BEEN PREPARED, IN PART, ON THE BASIS OF INFORMATION COMPILED AND FURNISHED BY OTHERS. THE ENGINEER WILL NOT BE RESPONSIBLE FOR ANY ERRORS OR OMISSIONS WHICH HAVE BEEN INCORPORATED INTO THIS DOCUMENT AS A RESULT.
DATE 2-4-02