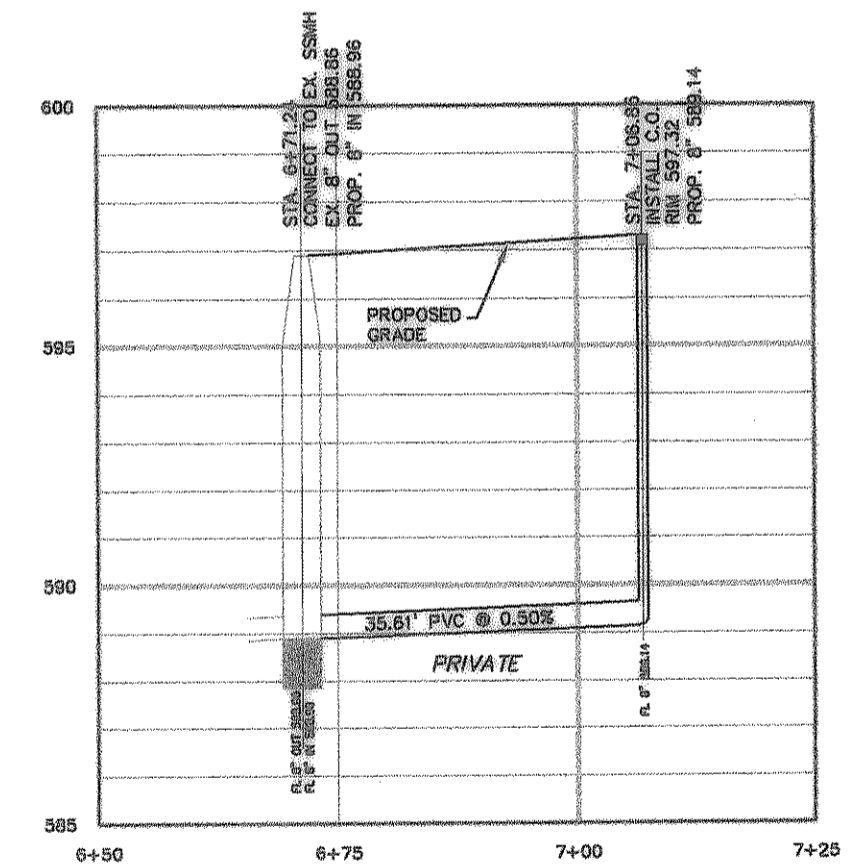


LEGEND

---	PROPERTY LINE
- - - -	ADJOINED PROPERTY
---	EXISTING CURB
- - - -	EXISTING EASEMENT OR SETBACK
---	EXISTING WATER LINE
○	EXISTING SANITARY SEWER CLEANOUT
---	PROPOSED CURB
W - - - W - - - W - - -	PROPOSED WATER LINE
FW - - - FW - - - FW - - -	PROPOSED FIRE WATER LINE
SS - - - SS - - - SS - - -	PROPOSED SANITARY SEWER LINE
○	PROPOSED SANITARY SEWER MANHOLE
⊥	PROPOSED GATE VALVE



SANITARY SEWER

GENERAL NOTES

1. ALL UNDERGROUND UTILITIES SHOWN ARE BASED ON THE BEST AVAILABLE INFORMATION. THE CONTRACTOR SHALL VERIFY EXACT UTILITY LOCATIONS PRIOR TO ANY CONSTRUCTION. THE CONTRACTOR SHALL CALL DIG-TESS AT 1.800.344.8377 PRIOR TO ANY EXCAVATION.
2. INVERT ELEVATIONS SHOWN AT EXISTING SANITARY MANHOLE ARE APPROXIMATE. CONTRACTOR TO VERIFY INVERT PRIOR TO CONSTRUCTION AND ADJUST THE INVERT OF THE 8" SERVICE LINE ACCORDINGLY.
3. IF ANY CONFLICT OR DISCREPANCY FROM THE PLANS IS FOUND, NOTIFY THE ENGINEER BEFORE CONTINUING WITH ANY FURTHER CONSTRUCTION.
4. ALL PIPE SHALL BE LAID STARTING AT THE TIE-IN LOCATION AND LAID UPSTREAM FROM THAT POINT.
5. DOMESTIC AND IRRIGATION WATER LINE MECHANICAL DEVICES TO INCLUDE DOUBLE DETECTOR CHECK, BACKFLOW AND ANTI-SYPHON TO BE LOCATE WITHIN THE MECHANICAL ROOM. SEE MEP PLANS FOR DETAILS AND DESIGN.
6. ALL SANITARY SEWER AND WATER PIPE AND APPURTENANCES SHALL MEET ASTM AND CITY OF TALTY STANDARDS FOR UTILITY CONSTRUCTION.
7. OWNER TO OBTAIN ALL PERMITS REQUIRED BY CITY OF TALTY, TEXAS PRIOR TO STARTING CONSTRUCTION OF UTILITIES WITHIN CITY OF TALTY RIGHTS-OF-WAY.
8. CONTRACTOR SHALL CALL THE DEPARTMENT OF PUBLIC WORKS AT (972)450-2871 FOR UTILITY LOCATIONS PRIOR TO ANY WORK IN THE CITY EASEMENTS OR STREET RIGHT-OF-WAY.
9. SEE GENERAL NOTES SHEET C2.0 FOR FURTHER INFORMATION.
10. DIG-TESS TEXAS ONE CALL PARTICIPANTS REQUEST 48 HOURS NOTICE BEFORE YOU DIG, DRILL OR BLAST. STOP, CALL TEXAS DIG-TESS SYSTEM AT 1.800.344.8377.
11. GREEN EMS DISKS SHALL BE PLACED ON SANITARY SEWER LINES AT EVERY CHANGE IN DIRECTION, MANHOLE, CLEANOUTS AND SERVICES.
12. BLUE EMS DISKS SHALL BE PLACED ON WATER LINES AT EVERY CHANGE IN DIRECTION, VALVE AND SERVICES.
13. PROPOSED SONIC HAS 300 FOOT OR BETTER FIRE COVERAGE FROM THE EXISTING FIRE HYDRANT TO THE WEST. THIS INCLUDES EXCLUSION OF THE AWNINGS OR COVERED AREAS IN THE HOSE LAY MEASUREMENT.

TRENCH SAFETY

STATE OF TEXAS LAW REQUIRES THAT THE CONTRACTOR WILL PROVIDE A TRENCH SAFETY PLAN (TRENCH SHORING) FOR UTILITY TRENCHES GREATER THAN FIVE (5) FEET IN DEPTH. THIS PLAN SHALL BE PREPARED BY A PROFESSIONAL ENGINEER. THE CONTRACTOR SHALL SUBMIT THE TRENCH SAFETY PLAN TO THE TOWN OF ADDISON TOWN ENGINEER PRIOR TO THE START OF CONSTRUCTION.

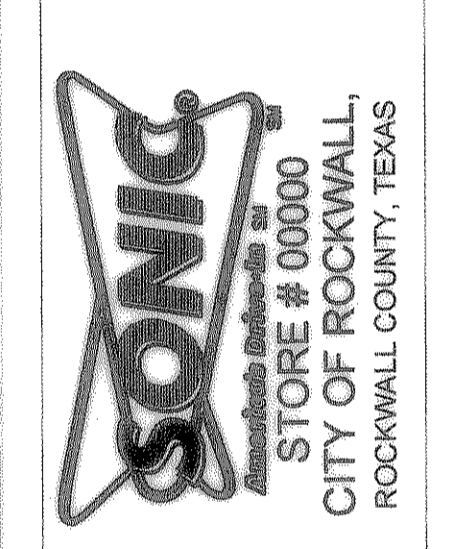
THE LOCATION OF EXISTING UNDERGROUND UTILITIES ARE SHOWN IN AN APPROXIMATE WAY ONLY. THE CONTRACTOR SHALL DETERMINE THE EXACT LOCATION OF ALL EXISTING UTILITIES BEFORE COMMENCING WORK. HE AGREES TO BE FULLY RESPONSIBLE FOR ANY AND ALL DAMAGES WHICH MIGHT BE OCCASIONED BY HIS FAILURE TO EXACTLY LOCATE AND PRESERVE ANY AND ALL UNDERGROUND UTILITIES.

CONTRACTOR SHALL CONTACT DIG-TESS AT 1-800-DIG-TESS A MINIMUM OF 48 HOURS PRIOR TO ANY CONSTRUCTION ACTIVITY

RECORD DRAWINGS

THE DRAWINGS CONTAINED IN THIS SET ARE "RECORD DRAWINGS". THE INFORMATION SHOWN ON THESE SHEETS, WHERE IT DIFFERS FROM THE PERMITTED SET, IS TAKEN FROM FIELD OBSERVATIONS AND NOTES PROVIDED BY THE GENERAL CONTRACTOR, NOT FROM SURVEYED DATA OR FROM FIELD OBSERVATIONS BY MA ENGINEERING & CONSTRUCTION EMPLOYEES.

NO.	DESCRIPTION	BY	DATE	SCALE
1	ISSUED TO THE CITY OF REVIEW	MA	3-11-08	1" = 20'
2	ISSUED TO THE CITY OF REVIEW	MA	6-13-08	1" = N/A
3	ISSUED TO THE CITY OF REVIEW	MA	8-19-08	1" = N/A
4	ISSUED TO THE CITY OF REVIEW	MA	8-20-08	1" = N/A
5	ISSUED FOR CONSTRUCTION	MA	7-9-08	1" = N/A
	RECORD SET	MA	11-21-08	1" = N/A



UTILITY PLAN

5850 W I-20 SUITE 250
ARLINGTON, TX 76017
PHONE (817) 563-6900
FAX (817) 796-1042

SHEET
C-5.0