

Signal_Ridge_Place_12_sw3p_Narrative2AB.dgn
 PLOTTED By: David
 6/2/2008 3:01:02 PM

SEQUENCE AND TIMING OF INDICATED EROSION CONTROL PRACTICES AND/OR FEATURES
 (INCLUDE TREATMENT OF STOCKPILED DIRT FOR FUTURE USE)

PRIOR TO BEGINNING CONSTRUCTION, A CONSTRUCTION ENTRANCE SHALL BE CONSTRUCTED AS SHOWN ON APPROVED PLANS AND ALL SILT FENCING MATERIAL SHALL BE IN PLACE.

DETAILED DESCRIPTION OF BMP MAINTENANCE PROTOCOLS

REFER TO PART 3 SEC. E & F OF THE TCEQ GENERAL PERMIT NO. TXR150000

DESCRIPTION OF METHODS USED TO MODIFY STORM WATER POLLUTION CONTROLS

IF EXISTING CONTROLS ARE DETERMINED INADEQUATE

IF EXISTING CONTROLS ARE DETERMINED INADEQUATE BY THE ENGINEER OF RECORD OR CITY AND STATE OFFICIALS, THE OWNER OR OWNERS REPRESENTATIVES SHALL MODIFY STORM WATER POLLUTION CONTROLS IMMEDIATELY.

SITE RATING FACTOR UTILIZING INDICATED
 EROSION CONTROL & MEASURES = .75
 (MUST BE 0.70 OR LARGER)

EROSION AND SEDIMENT CONTROLS

MAINTENANCE/INSPECTION PROCEDURES

1. THE OPERATOR SHALL PROVIDE AND MAINTAIN A RAIN GAUGE UTILIZING MIN. 0.1 INCH INCREMENTS AT THE PROJECT SITE.
 2. CONTROL MEASURES SHALL BE INSPECTED AT LEAST ONCE EVERY 14 CALANDER DAYS AND WITHIN 24 HOURS OF ANY STORM EVENT OF 0.5 INCH OR GREATER. IF A REPAIR IS NECESSARY IT WILL BE DONE AT THE EARLIEST PRACTICABLE DATE.
 3. INSPECTION SHALL BE PERFORMED BY THE OPERATOR'S REPRESENTATIVE. AN INSPECTION AND MAINTENANCE REPORT SHALL BE MADE FOR EACH INSPECTION AND KEPT AT THE PROJECT SITE. THE INSPECTOR SHALL USE THE OPERATOR INSPECTION FORM IN THE NCTCOG CONSTRUCTION BMP MANUAL OR OTHER FORM APPROVED BY THE CITY.
 4. THE OPERATOR SHALL MAINTAIN RECORDS OF CONSTRUCTION ACTIVITY AT THE SITE INCLUDING:
 - A. DATES WHEN MAJOR GRADING ACTIVITIES OCCUR.
 - B. DATES WHEN CONSTRUCTION ACTIVITIES TEMPORARILY OR PERMANENTLY CEASE.
 - C. DATES WHEN STABILIZATION MEASURES ARE INITIATED.
 5. THE OPERATOR SHALL SIGN AND POST ON-SITE THE APPROPRIATE TCEQ SITE NOTICE.
 6. THE OPERATOR SHALL SIGN AND POST ON-SITE A COPY OF THE TCEQ NOI (FOR PROJECTS THAT DISTURB 5 ACRES OR MORE).
 7. THE OPERATOR SHALL PROVIDE THE CITY WITH A COPY OF ANALYSIS OF STORM WATER RUNOFF SAMPLES REQUIRED BY TCEQ FOR BATCH PLANT OPERATIONS.
- OTHER (DESCRIBE)

ALLOWABLE NON-STORM WATER DISCHARGES

DISCHARGES FROM FIRE FIGHTING ACTIVITIES.
 FIRE HYDRANT FLUSHINGS. *
 WATER USED TO CONTROL DUST.
 POTABLE WATER SOURCES (INCLUDING WATERLINE FLUSHINGS CONTAINING LESS THAN 1000 GALLONS). *
 UNCONTAMINATED GROUND WATER (INCLUDING DEWATERING GROUNDWATER INFILTRATION).
 FOUNDATION OR FOOTING DRAINS WHERE FLOWS ARE NOT CONTAMINATED WITH PROCESS MATERIALS SUCH AS SOLVENTS.
 SPRINGS, RIPARIAN HABITATS, WETLANDS AND UNCONTAMINATED GROUNDWATER.
 IRRIGATION WATER.
 EXTERIOR BUILDING OR VEHICLE WASH DOWN WITHOUT DETERGENTS.
 PAVEMENT WASH WATERS WHERE SPILLS OR LEAKS OF TOXIC OR HAZARDOUS MATERIALS HAVE NOT OCCURRED (UNLESS ALL SPILL MATERIAL HAS BEEN REMOVED) AND WHERE DETERGENTS ARE NOT USED.
 AIR CONDITIONING CONDENSATE.

* HEAVILY CHLORINATED WATER (3.5 MG/L OR GREATER FREE CHLORINE) RESULTING FROM WATER LINE STERILIZATION SHALL BE DIRECTED UNDER PERMIT TO THE SANITARY SEWER UNLESS OTHERWISE NOTED. THE CONTRACTOR SHALL APPLY TO THE ENGINEERING DEPARTMENT FOR A SANITARY SEWER DISCHARGE PERMIT AFTER THE MANDATORY CHLORINE RETENTION TIME (USUALLY 24 HOURS). THE HEAVILY CHLORINATED WATER MAY BE DISCHARGED TO THE SANITARY SEWER, BEGINNING TWO WORKING DAYS AFTER PERMIT APPLICATION.

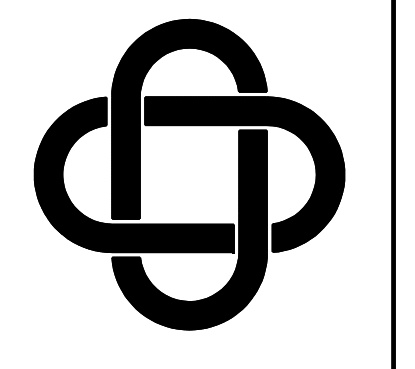
GENERAL

THE SW3P FOR THIS PROJECT HAS BEEN DEVELOPED BASED ON THE NORTH CENTRAL TEXAS COUNCIL OF GOVERNMENTS (NCTCOG) CONSTRUCTION BMP MANUAL. THE 2 NARRATIVE SHEETS WERE DEVELOPED AS AN AID FOR THOSE IMPLEMENTING STORM WATER POLLUTION PREVENTION PLANS (SW3P'S) FOR VARIOUS CONSTRUCTION ACTIVITIES. THEIR USE DOES NOT RELIEVE THE OPERATOR(S) FROM COMPLYING WITH THE NCTCOG BMP MANUAL OR THE TEXAS POLLUTION DISCHARGE ELIMINATION SYSTEM (TPDES) GENERAL PERMIT FOR STORM WATER DISCHARGE FROM CONSTRUCTION SITES.

PRIOR TO THE COMMENCEMENT OF WORK ON PROJECTS 5 ACRES OR LARGER THE OPERATOR SHALL SUBMIT NOTICES OF INTENT (NOI) TO DISCHARGE STORM WATER FROM A CONSTRUCTION SITE UNDER THE TPDES PERMIT.

NOTE:
 TO THE BEST OF OUR KNOWLEDGE ERIC L. DAVIS ENGINEERING, INC.. HEREBY STATES THAT THIS PLAN IS AS-BUILT. THE INFORMATION PROVIDED IS BASED ON SURVEYING CONDUCTED AT THE SITE AND INFORMATION PROVIDED BY THE CONTRACTOR.

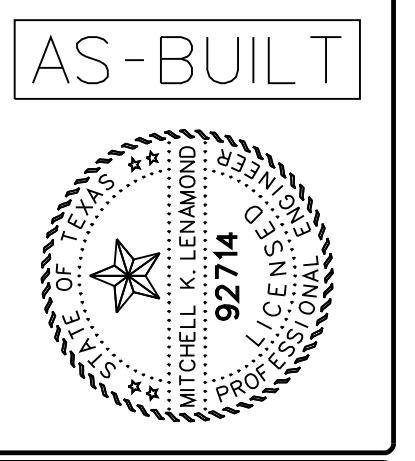
REVISION	DATE	BY	REV



ERIC L. DAVIS
 ENGINEERING, INC.
 425 Pinson Road Ste. C
 Forney, Texas 75126
 972/564-0592 Fax 972/564-6523
 E-Mail ericdavis@eidengineering.com

TEMPORARY EROSION
 CONTROL NARRATIVE
 SIGNAL RIDGE PLACE
 CITY OF ROCKWALL, ROCKWALL CO, TX

DEVELOPER:	
JOB NO.:	
DRAWN BY:	
CHECKED BY:	
DATE:	



SCALE: N/A

SHEET 12 OF 12

SHEET 12