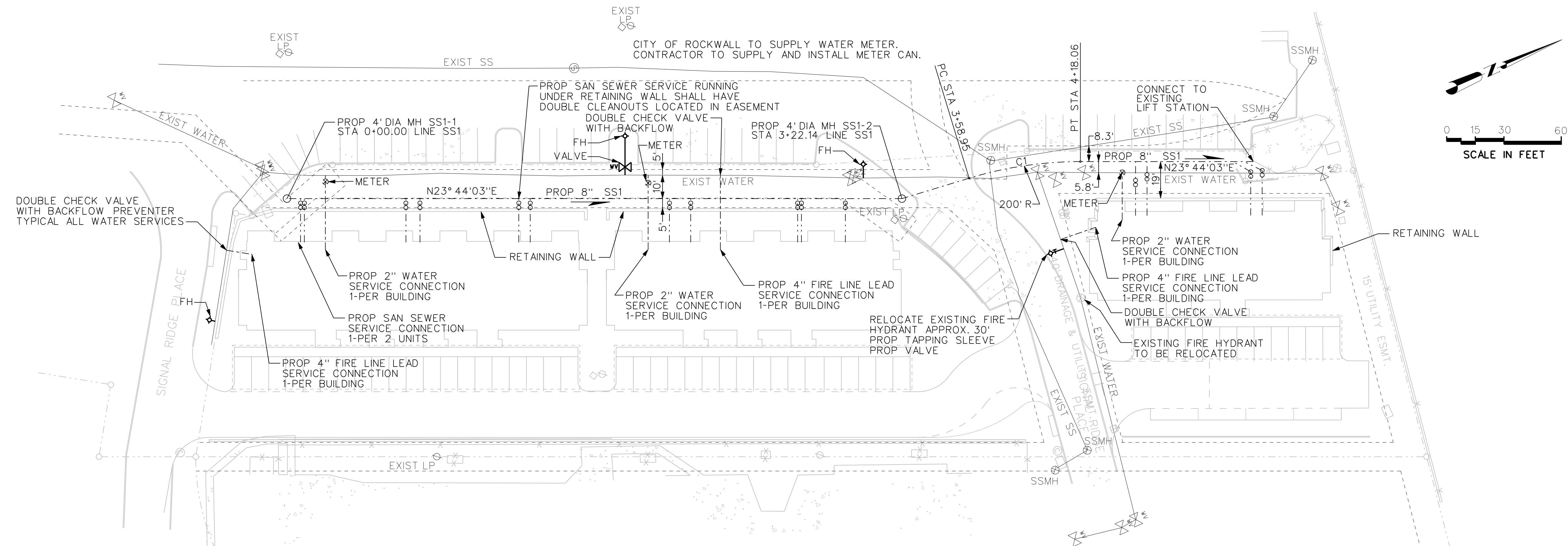


CURVE TABLE					
CURVE	LENGTH	RADIUS	DELTA	CHORD BEAR	CHORD DIST
C1	59.11'	200.00'	16° 56' 00"	N15° 16' 03"E	58.89'

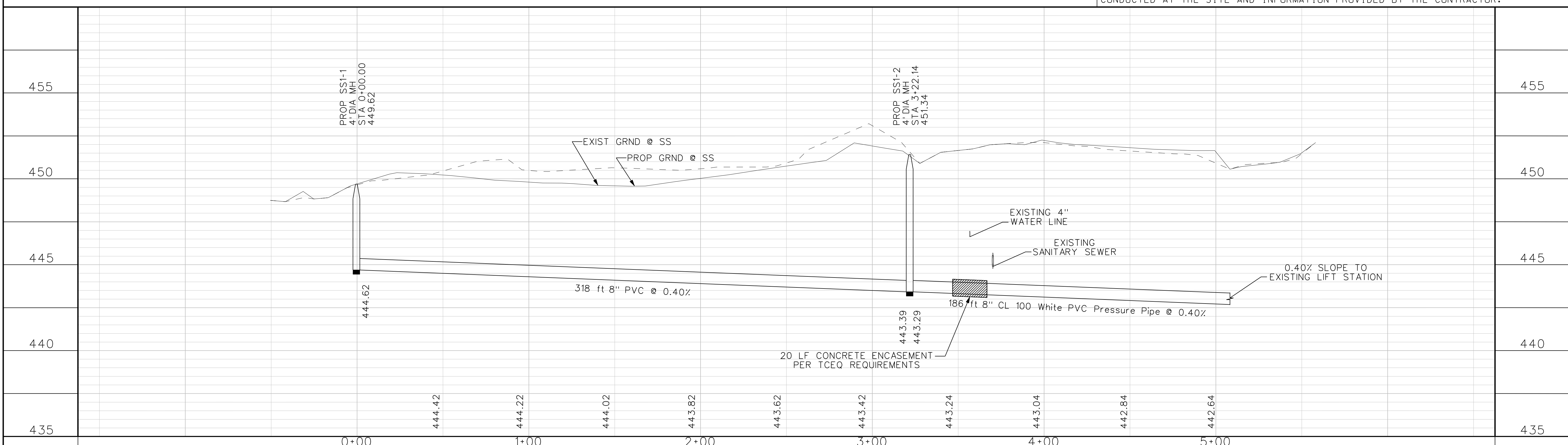


TEXAS COMMISSION ON ENVIRONMENTAL QUALITY
REQUIREMENTS OF CHAPTER 317

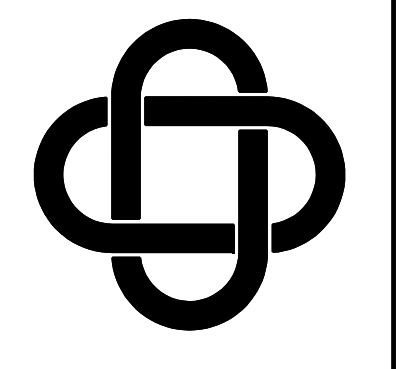
WHERE A NEW SANITARY SEWER PIPE CROSSES A WATER LINE ONE SEGMENT OF THE SANITARY SEWER PIPE SHALL BE CENTERED OVER THE WATER LINE.
WATER LINE SHALL BE CLASS 200.
GREEN EMS DISKS SHALL BE PLACED ON THE SANITARY SEWER LINE AT EVERY CHANGE IN DIRECTION, MANHOLE, CLEANOUT, AND SERVICE.

ALL WATER SERVICES SHALL HAVE DOUBLE-CHECK VALVES AND BACKFLOW PREVENTERS

NOTE:
TO THE BEST OF OUR KNOWLEDGE ERIC L. DAVIS ENGINEERING, INC., HEREBY STATES THAT THIS PLAN IS AS-BUILT. THE INFORMATION PROVIDED IS BASED ON SURVEYING CONDUCTED AT THE SITE AND INFORMATION PROVIDED BY THE CONTRACTOR.



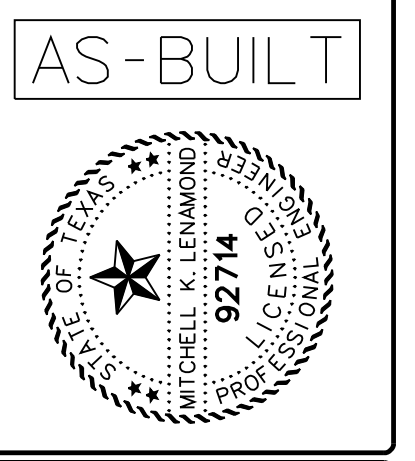
DATE	BY	REV	REVISION



ERIC L. DAVIS
ENGINEERING, INC.
425 Pinson Road Ste. C
Forney, Texas 75126
972/564-0592 Fax 972/564-6523
E-Mail ericdavis@eidengineering.com

UTILITY PLAN
SIGNAL RIDGE PLACE
CITY OF ROCKWALL, ROCKWALL CO, TX

DEVELOPER:	
JOB NO.:	
DRAWN BY:	
CHECKED BY:	
DATE:	



SCALE: 1"=30'
SHEET 9 OF 12
SHEET 9

Signal_Ridge_Place_09_Utility_Plan.dwg
PLOTTED BY: David
6/2/2008 3:00:49 PM