

ISLANDS  
STATIONS & OFFSETS

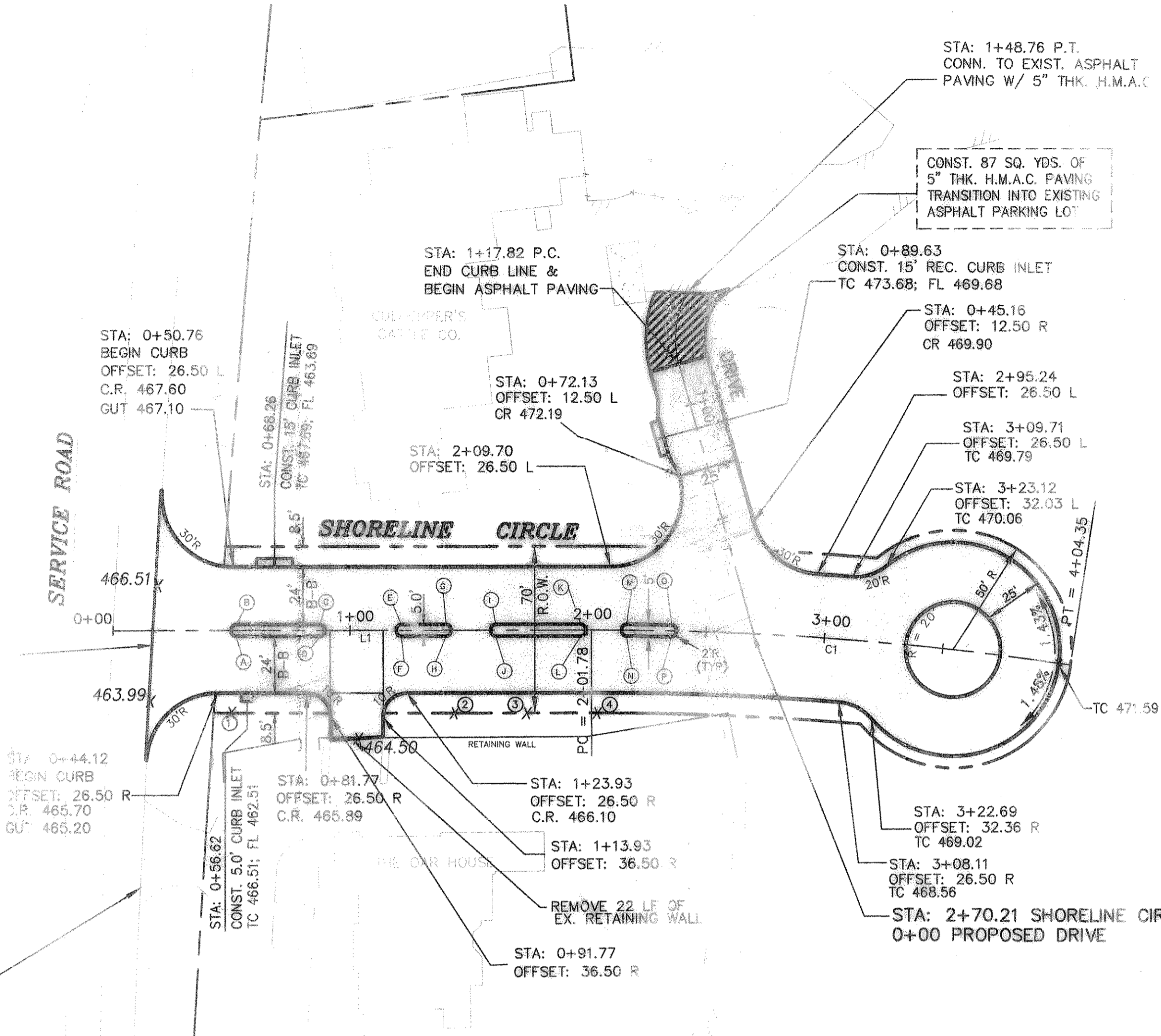
- ① STA: 0+51.97  
OFFSET: 2.50 R ~ TC = 467.47
- ② STA: 0+52.04  
OFFSET: 2.50 L ~ TC = 468.10
- ③ STA: 0+87.30  
OFFSET: 2.50 L ~ TC = 468.28
- ④ STA: 0+87.30  
OFFSET: 2.50 R ~ TC = 467.76
- ⑤ STA: 1+21.61  
OFFSET: 2.50 L ~ TC = 468.45
- ⑥ STA: 1+21.61  
OFFSET: 2.50 R ~ TC = 468.04
- ⑦ STA: 1+40.48  
OFFSET: 2.50 L ~ TC = 468.54
- ⑧ STA: 1+40.48  
OFFSET: 2.50 R ~ TC = 468.19
- ⑨ STA: 1+61.43  
OFFSET: 2.50 L ~ TC = 468.64
- ⑩ STA: 1+61.43  
OFFSET: 2.50 R ~ TC = 468.36
- ⑪ STA: 1+97.30  
OFFSET: 2.50 L ~ TC = 468.82
- ⑫ STA: 1+97.30  
OFFSET: 2.50 R ~ TC = 468.65
- ⑬ STA: 2+16.55  
OFFSET: 2.50 L ~ TC = 468.99
- ⑭ STA: 2+16.55  
OFFSET: 2.50 R ~ TC = 468.82
- ⑮ STA: 2+35.56  
OFFSET: 2.50 L ~ TC = 469.20
- ⑯ STA: 2+35.56  
OFFSET: 2.50 R ~ TC = 469.07

NOTE:  
SEE SHEET 5A FOR I.H. 30  
RAMP & U-TURN IMPROVEMENTS

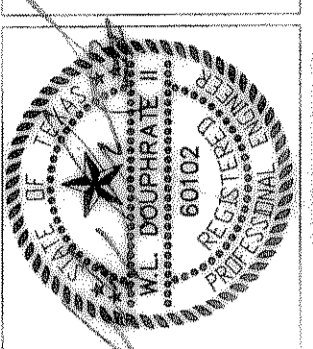
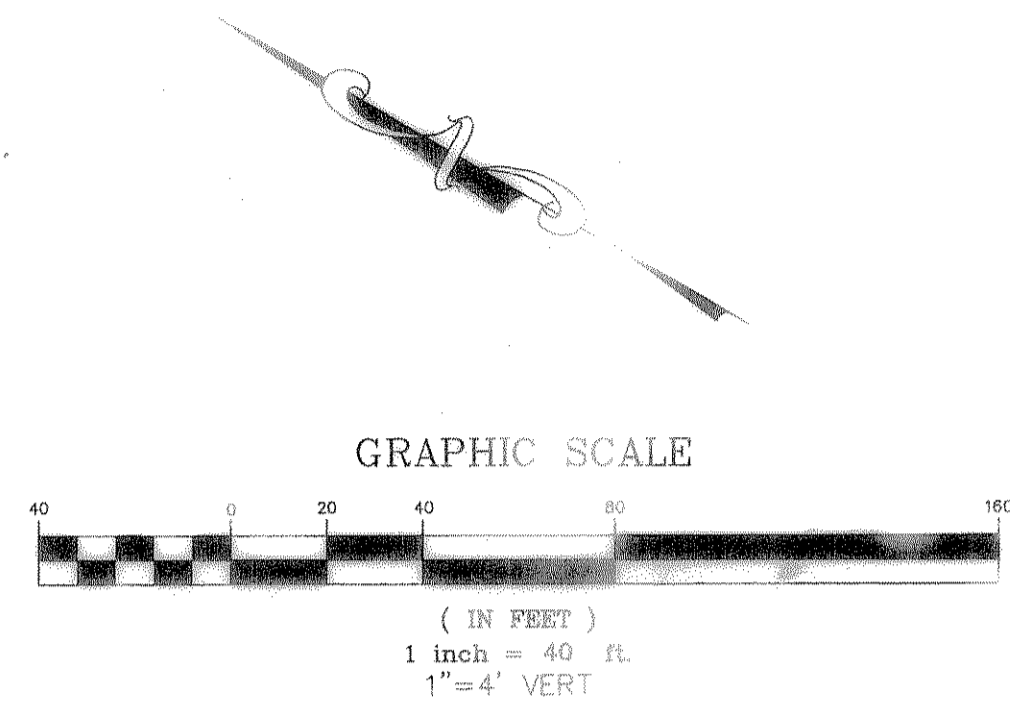
INTERSTATE HIGHWAY NO. 30

REMOVE 144 S.F. OF  
EXISTING ASPHALT  
PAVING & SMOOTH  
CONNECT TO EXIST'  
PAVING

EXISTING DRIVEWAY TO  
BE REMOVED WHEN  
SHORELINE CIRCLE  
IS IN SERVICE



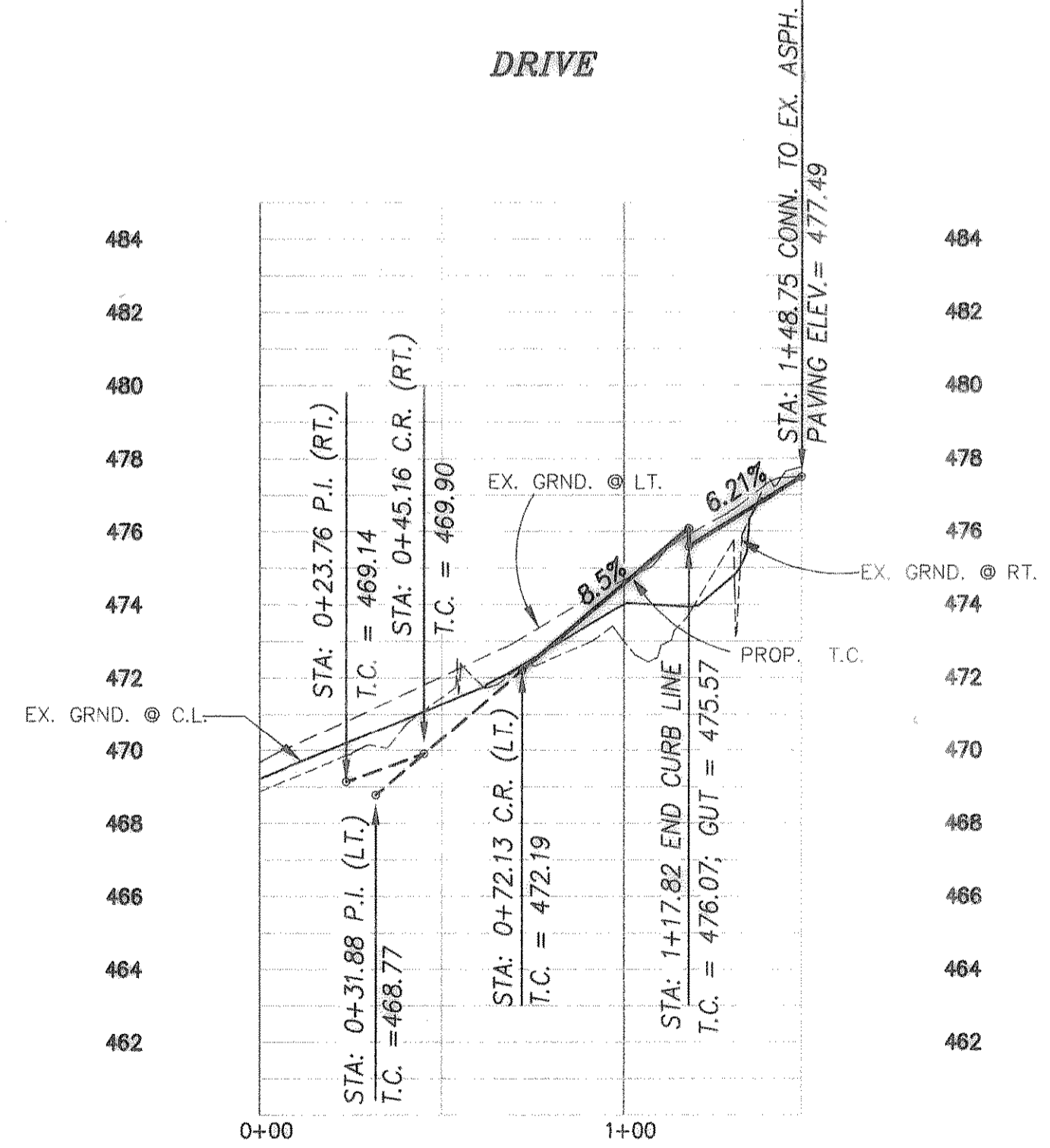
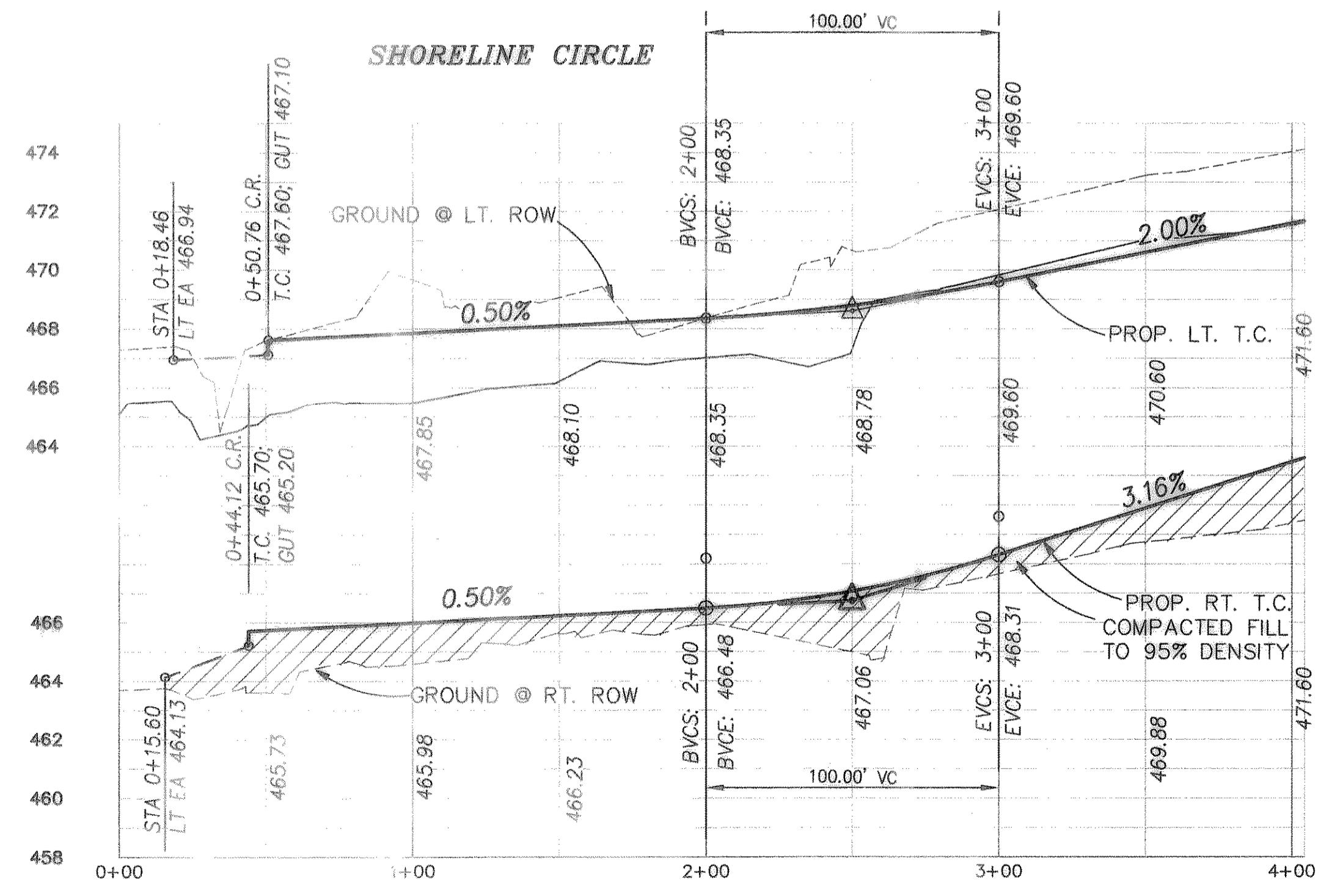
CURVE TABLE					
CURVE	DELTA	RADIUS	TANGENT	ARC LENGTH	CHORD
1	08°47'28"	1320.31	107.49	202.58	202.38



THE SEAL APPEARING ON THIS  
DOCUMENT WAS AUTHORIZED BY  
W.L. DOUPHRADE II TEXAS P.E.  
NO. 00102 ON 5/2/00

DOUPHRADE & ASSOCIATES, INC.  
ENGINEERING • PROJECT MANAGEMENT • SURVEYING  
2235 RIDGE RD. # 200 ROCKWALL, TEXAS 75087  
PHONE: (972)771-0004 FAX: (972)771-9005

PVI STA = 2+50  
PVI ELEV = 468.60  
A.D. = 1.50  
K = 66.67



REVISED TO CONFORM TO CONSTRUCTION RECORDS.  
DATE: 4/14/02

PAVING PLAN & PROFILE  
SHORELINE DRIVE  
SHORELINE PLAZA ADDITION  
CITY OF ROCKWALL, ROCKWALL COUNTY, TEXAS

1. REVISED AS PER  
CITY OF ROCKWALL  
MARK-UPS.  
REV. 6/27/00

REVISION	DATE
W.L.D. CHECKED	
A.J.W. DRAWN	
	4/13/2000
	9957PVG1
	PROJECT