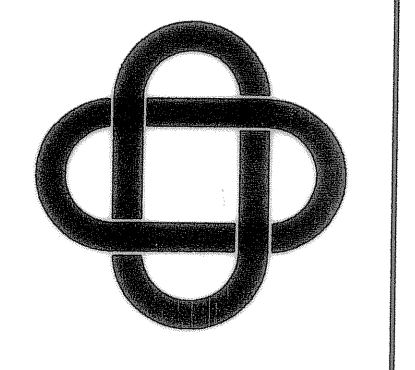


PAVING REQUIREMENTS		
SECTION	FIRE LANE	DRIVEWAYS/PARKING
PAVING	6" - 3600 PSI 6 1/2 SACK CONC *3 BARS @ 10" OCEW	5" - 3000 PSI 6 SACK CONC *3 BARS @ 12" OCEW
SUBGRADE	SCARIFY TOP 12" AND ADD WATER. COMPACT TO 95%-100% ASTM D698 (STANDARD PROCTOR) MAXIMUM DENSITY. W/MOISTURE CONTENT WITHIN 3% OF OPTIMUM NO SAND UNDER PAVING	SCARIFY TOP 12" AND ADD WATER. COMPACT TO 95%-100% ASTM D698 (STANDARD PROCTOR) MAXIMUM DENSITY. W/MOISTURE CONTENT WITHIN 3% OF OPTIMUM NO SAND UNDER PAVING
		TEMPORARY ASPHALT
		3" MIN. TYPE "D" HOT MIX ASPHALT
		8" CRUSHED ROCK

NOTE:  
TO THE BEST OF OUR KNOWLEDGE ERIC L. DAVIS ENGINEERING, INC., HEREBY STATES THAT THIS PLAN IS AS-BUILT. THE INFORMATION PROVIDED IS BASED ON SURVEYING CONDUCTED AT THE SITE AND INFORMATION PROVIDED BY THE CONTRACTOR.

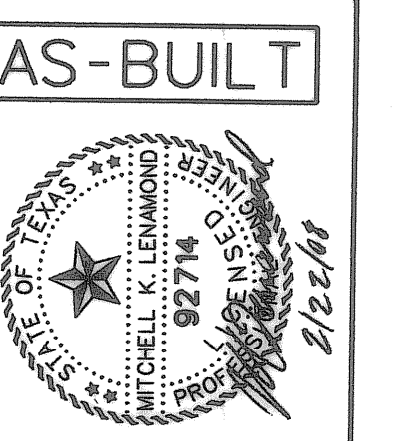
DATE	BY	REV	REVISION



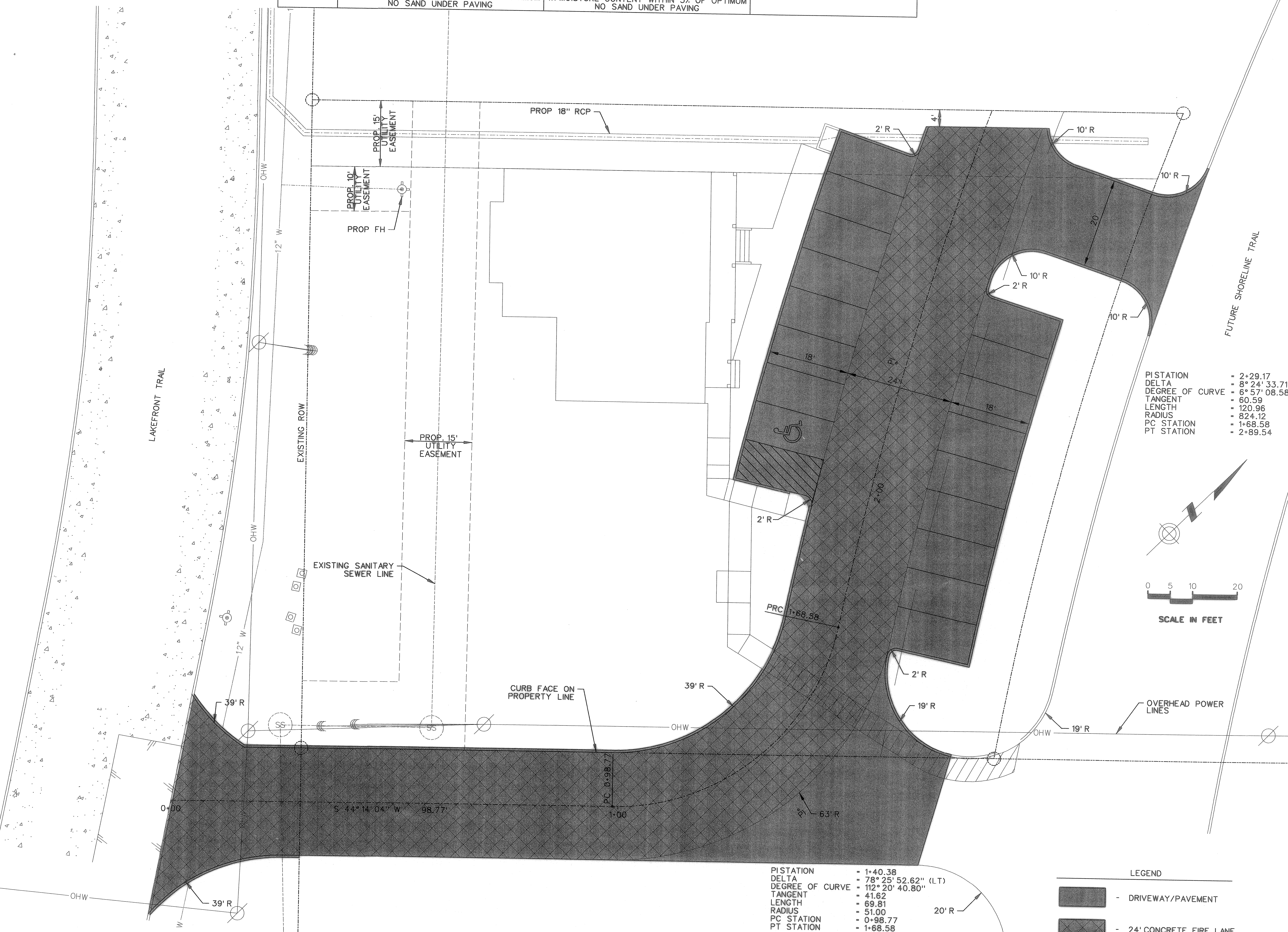
ERIC L. DAVIS  
ENGINEERING, INC.  
425 Pinson Road Ste. G  
Forney, Texas 75126  
972/564-0592 Fax 972/564-6523  
E-Mail ericdavis@eldengineering.com

PAVING PLAN  
SHORELINE PLAZA  
CITY OF ROCKWALL, ROCKWALL CO, TEXAS

DEVELOPER:	
JOB NO.:	
DRAWN BY:	
CHECKED BY:	
DATE:	



SCALE: 1"=10'  
SHEET 10 OF 14  
SHEET 10



PISTATION	= 2+29.17
DELTA	= 8° 24' 33.71" (RT)
DEGREE OF CURVE	= 6° 57' 08.58"
TANGENT	= 60.59
LENGTH	= 120.96
RADIUS	= 824.12
PC STATION	= 1+68.58
PT STATION	= 2+89.54

PISTATION	= 1+40.38
DELTA	= 78° 25' 52.62" (LT)
DEGREE OF CURVE	= 112° 20' 40.80"
TANGENT	= 41.62
LENGTH	= 69.81
RADIUS	= 51.00
PC STATION	= 0+98.77
PT STATION	= 1+68.58

LEGEND	
	- DRIVEWAY/PAVEMENT
	- 24' CONCRETE FIRE LANE

Shoreline\_Plaza\_10\_Paving\_Plan.sht  
PLOTTED BY: David  
2/22/2008 10:04:57 AM