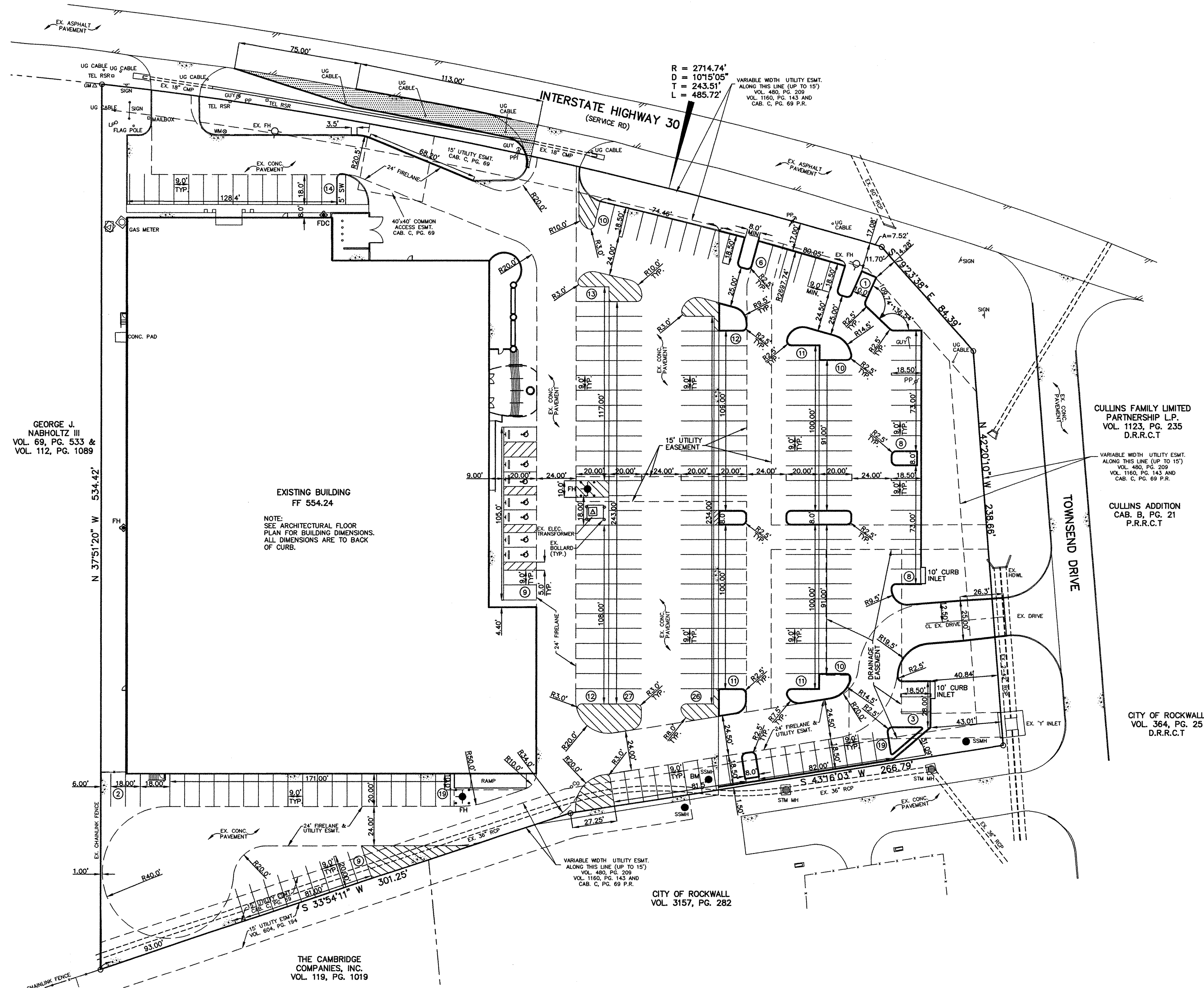


G:\2008\28110\SSSITE.dwg Mod Dec 03 15:05:19 2008



GEORGE J. NABHOLTZ III  
VOL. 69, PG. 533 &  
VOL. 112, PG. 1089

EXISTING BUILDING  
FF 554.24  
NOTE:  
SEE ARCHITECTURAL FLOOR  
PLAN FOR BUILDING DIMENSIONS.  
ALL DIMENSIONS ARE TO BACK  
OF CURB.

CITY OF ROCKWALL  
VOL. 3157, PG. 282

THE CAMBRIDGE  
COMPANIES, INC.  
VOL. 119, PG. 1019

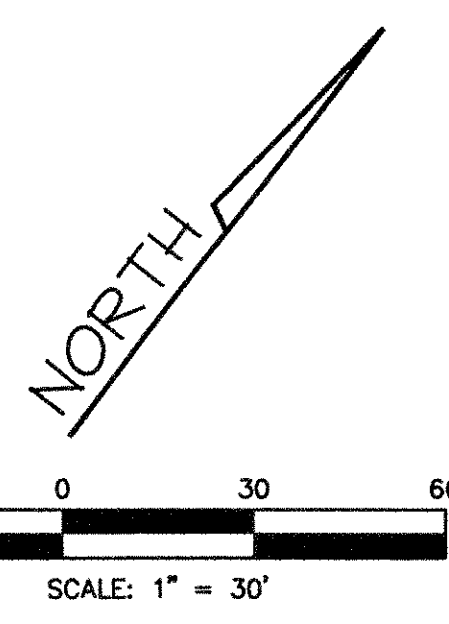
CULLINS FAMILY LIMITED  
PARTNERSHIP L.P.  
VOL. 1123, PG. 235  
D.R.R.C.T

CULLINS ADDITION  
CAB. B, PG. 21  
P.R.R.C.T

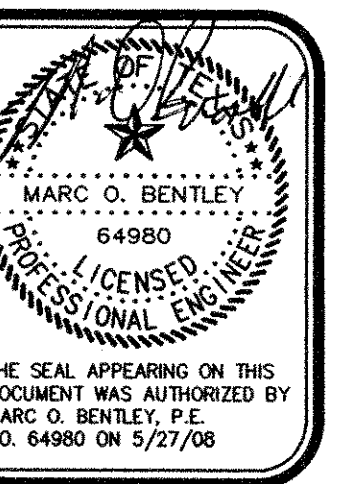
CITY OF ROCKWALL  
VOL. 364, PG. 25  
D.R.R.C.T

$R = 2714.74'$   
 $D = 1015'05''$   
 $T = 243.51'$   
 $L = 485.72'$   
VARIABLE WIDTH UTILITY ESMT.  
ALONG THIS LINE (UP TO 15')  
VOL. 480, PG. 209  
VOL. 1160, PG. 143 AND  
CAB. C, PG. 69 P.R.

VARIABLE WIDTH UTILITY ESMT.  
ALONG THIS LINE (UP TO 15')  
VOL. 480, PG. 209  
VOL. 1160, PG. 143 AND  
CAB. C, PG. 69 P.R.



**Bentley**  
ENGINEERING, INC.



**DIMENSIONAL CONTROL**  
SHENANIGANZ  
CITY OF ROCKWALL, TEXAS

**RECORD DRAWING**

No.	Date	Revision
1	6/12/08	REVISED PER CITY COMMENTS

Scale: 1"=30'  
File Name: SCSITE  
Date: APRIL 2008  
Project No.: 28110

Sheet  
**C1**

**RECORD DRAWING**

IMPROVEMENTS INDICATED ON THESE PLANS WHERE REVISED  
IN ACCORDANCE WITH THE ASBUILT SURVEY PERFORMED BY  
LANE'S SOUTHWEST SURVEYING, INC. AND PROVIDED TO  
BENTLEY ENGINEERING, INC. ON 12/03/08.

DATE: DECEMBER 3, 2008