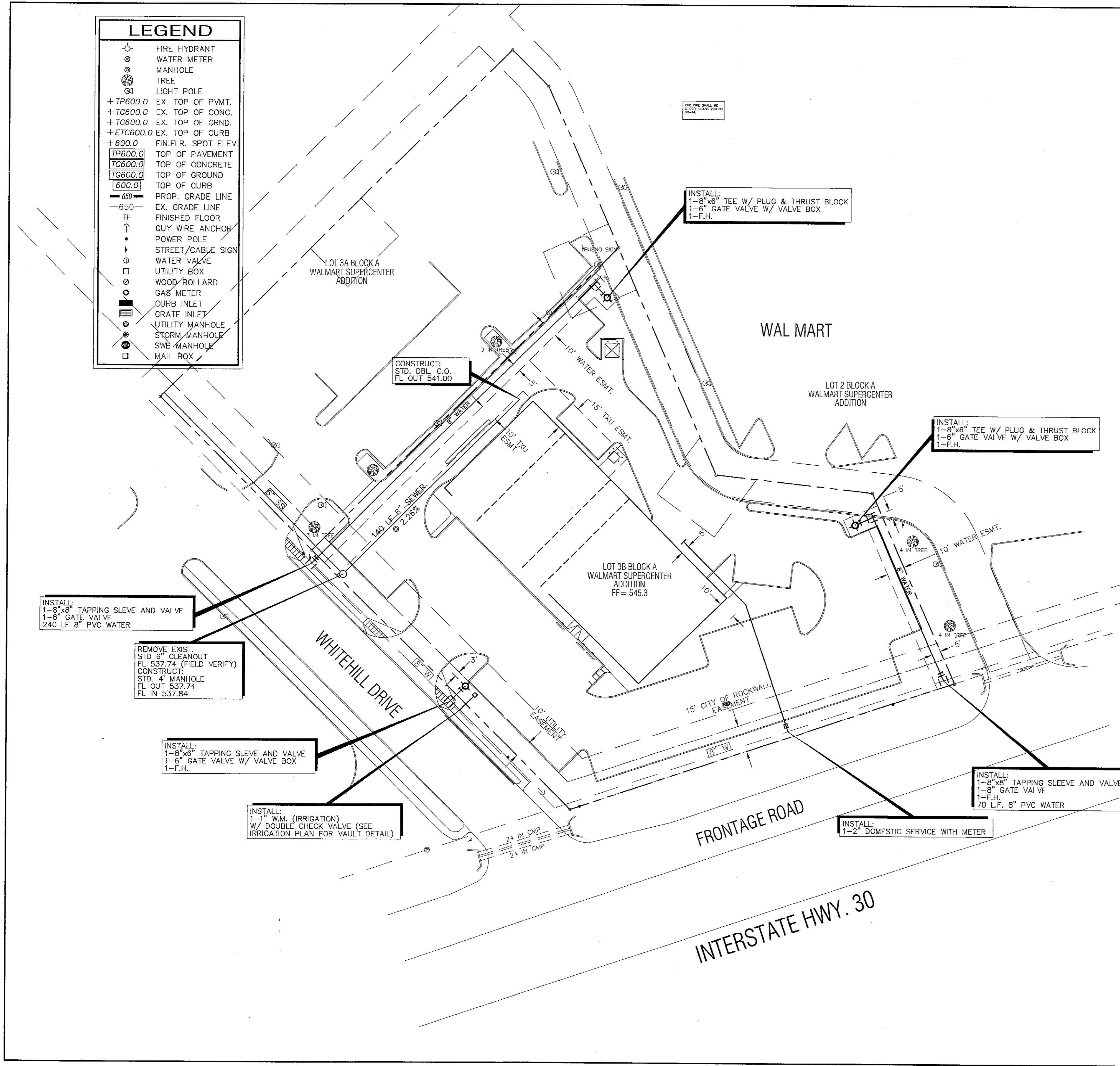


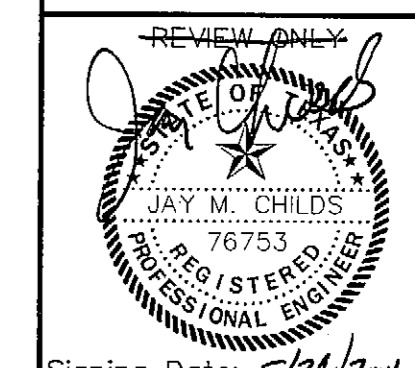
LEGEND	
	FIRE HYDRANT
	WATER METER
	MANHOLE
	TREE
	LIGHT POLE
+TP600.0	EX. TOP OF PVMT.
+TC600.0	EX. TOP OF CONC.
+TG600.0	EX. TOP OF GRND.
+ET600.0	EX. TOP OF CURB
+600.0	FIN.FLR. SPOT ELEV.
TP600.0	TOP OF PAVEMENT
TC600.0	TOP OF CONCRETE
TG600.0	TOP OF GROUND
600.0	TOP OF CURB
650	PROP. GRADE LINE
-650-	EX. GRADE LINE
FF	FINISHED FLOOR
↑	GUY WIRE ANCHOR
↑	POWER POLE
↑	STREET/CABLE SIGN
○	WATER VALVE
□	UTILITY BOX
○	WOOD BOLLARD
○	GAS METER
□	CURB INLET
□	GRATE INLET
○	UTILITY MANHOLE
○	STORM MANHOLE
○	SWB MANHOLE
□	MAIL BOX



- UTILITY NOTES**
- WATER LINE GENERAL NOTES:
- ALL WORK AND MATERIALS, UNLESS OTHERWISE NOTED, SHALL CONFORM TO THE STANDARD SPECIFICATIONS FOR THE CITY OF ROCKWALL.
 - ALL 6", 8", 10", 12" WATER MAINS SHALL BE C-900, CLASS 200 WATER PIPE OR DR 14, FOR PVC SERVICE TAPS 1" AND LARGER, TAPPING SADDLES SHALL BE USED.
 - ALL WATER MAINS SHALL HAVE A MINIMUM COVER AS FOLLOWS: 6", 8", 10", AND 12" 48" BELOW FINISHED PAVEMENT GRADE, OR 60" BELOW EXISTING OR FINISHED GRADE IN UNPAVED AREAS, OR AS REQUIRED TO CLEAR OTHER UTILITIES.
 - EXTEND WATER DEADHEADS AND SANITARY SEWER LATERALS BEYOND PROPOSED CURB AS SHOWN ON THE WATER PLAN.
 - FIRE HYDRANTS TO BE CITY OF ROCKWALL APPROVED. APPROVED FIRE HYDRANTS ARE: M&H, WATEROUS, MULLIER, AND GLOW.
 - VALVES TO BE CITY OF ROCKWALL APPROVED.
 - THE WATER METER BOX SHALL BE FURNISHED AND INSTALLED BY THE CONTRACTOR AFTER THE PAVING CONTRACTOR HAS COMPLETED THE FINE GRADING BEHIND THE BACK OF THE CURB. EACH SERVICE LOCATION WILL BE MARKED ON THE PAVEMENT OR CURB, WITH A BLUE DOT BY THE UTILITY CONTRACTOR AND TIED TO PROPERTY CORNERS ON THE "RECORD DRAWINGS."
 - THE CONTRACTOR SHALL FURNISH A MAINTENANCE BOND TO THE CITY TO RUN TWO (2) YEARS FROM THE DATE OF ACCEPTANCE OF THE WATER, STORM SEWER AND SANITARY SEWER IN PUBLIC EASEMENTS.
 - THE CONTRACTOR SHALL BE RESPONSIBLE FOR PROVIDING "RECORD DRAWINGS" PLANS TO THE ENGINEER SHOWING THE LOCATION OF WATER SERVICES AND VALVES.
 - FIRE HYDRANTS SHALL BE PAINTED AS PER CITY OF ROCKWALL STANDARDS AND SPECIFICATIONS AND LOCATED IN A PROTECTED AREA WITH 6" CURB OR BOLLARDS.
 - STEAMER NOZZLES ON FIRE HYDRANTS SHALL BE 18" ABOVE THE TOP OF THE CURB OR FINISHED GRADE, AND SHALL FACE THE CENTER OF THE FIRE LANE OR STREET. FIRE HYDRANTS SHALL BE LOCATED A MINIMUM TWO (2) FEET AND A MAXIMUM OF SIX (6) FEET BEHIND THE CURB.
 - ALL WATER LINES SHALL BE HYDROSTATICALLY TESTED PER CITY OF ROCKWALL STANDARDS AND SPECIFICATIONS.
 - ALL METER BOXES SHALL BE LOCATED IN NON-TRAFFIC AREAS AND PROTECTED BY 6" CURB OR BOLLARDS.
 - THE HORIZONTAL AND VERTICAL LOCATIONS OF EXISTING SUBSURFACE UTILITIES HAVE BEEN DETERMINED FROM RECORD DRAWINGS. THE CONTRACTOR SHALL VERIFY THAT NECESSARY CLEARANCES BETWEEN EXISTING AND PROPOSED UTILITIES EXIST PRIOR TO THE CONSTRUCTION OF ANY SUCH CROSSING.
 - UTILITY TRENCHES SHALL BE BACKFILLED WITH MATERIAL PER CITY OF ROCKWALL SPECIFICATIONS.
 - ANCHOR FITTINGS SHALL BE USED TO ATTACH FIRE HYDRANTS.
 - NO WATER JETTING OF BACKFILL ALLOWED.
 - NO COMPRESSION FITTING ALLOWED.
- SANITARY SEWER GENERAL NOTES:
- ALL WORK, UNLESS OTHERWISE NOTED, SHALL CONFORM TO THE CITY OF ROCKWALL STANDARD SPECIFICATIONS.
 - THE HORIZONTAL AND VERTICAL LOCATIONS OF EXISTING SUBSURFACE UTILITIES HAVE BEEN DETERMINED FROM DATA RECORDED BY OTHERS. CONTRACTOR SHALL VERIFY THAT NECESSARY CROSSING CLEARANCES BETWEEN EXISTING AND PROPOSED UTILITIES EXIST PRIOR TO CONSTRUCTION OF ANY SUCH CROSSING.
 - CONTRACTOR SHALL COORDINATE WITH THE OWNER, ENGINEER OR HIS REPRESENTATIVE, AND CITY REPRESENTATIVE REGARDING ANY DEVIATIONS FROM THESE PLANS.
 - CONTRACTOR SHALL MAINTAIN ONE SET OF RECORD DRAWINGS (AS BUILT) ON SITE WHICH WILL BE SUBMITTED TO ENGINEER UPON COMPLETION OF THIS PROJECT.
 - IT WILL BE THE RESPONSIBILITY OF THE CONTRACTOR TO PROTECT ALL PUBLIC UTILITIES IN THE CONSTRUCTION OF THIS PROJECT: ALL MANHOLES, CLEANOUTS, VALVE BOXES, FIRE HYDRANTS, SEWER LATERALS, WATER SERVICES, ETC.
 - THE CONTRACTOR SHALL SET UTILITIES TO PROPER LINE AND GRADE PRIOR TO THE PLACING OF PERMANENT PAVEMENT.
 - SANITARY SEWER PIPE SHALL CONFORM TO CITY SPECIFICATIONS AND SHALL BE MANUFACTURED FROM ONE OF THE FOLLOWING MATERIALS:

A. POLYVINYLCHLORIDE (PVC)	DIAMETER	DEPTH LESS
ASTM D 3034	SDR 35	4" - 15" THAN 10 FEET
 - SANITARY SEWER PIPE MUST BE KEPT CLEAN OF BROKEN CONCRETE, DIRT OR OR ANY OTHER DEBRIS RESULTING FROM CONSTRUCTION OPERATIONS.
 - ALL SANITARY SEWER MAINS ARE TO HAVE 1-21" JOINT CENTERED ON EITHER SIDE OF WATER MAINS WHERE CROSSING OCCURS.
 - CONTRACTOR SHALL TIE A 1" WIDE PIECE OF RED PLASTIC FLAGGING TO THE END OF SEWER SERVICE AND SHALL LEAVE A MINIMUM OF 36" OF FLAGGING EXPOSED AFTER BACKFILL. AFTER CURB AND PAVING IS COMPLETED, CONTRACTOR SHALL MARK THE LOCATION OF THE SEWER SERVICE ON THE CURB IN ACCORDANCE WITH THE STANDARD CITY SPECIFICATIONS.
 - THE CONTRACTOR SHALL FURNISH A MAINTENANCE BOND TO THE CITY TO RUN 2 YEARS FROM THE DATE OF THE FINAL ACCEPTANCE OF THE WATER, STORM SEWER AND SANITARY SEWER IN PUBLIC EASEMENTS.
 - ALL SANITARY SEWER LATERALS SHALL BE SIZED AND LOCATED AS SHOWN.
 - NO WATER JETTING OF BACKFILL ALLOWED.
 - SEE MEP PLAN FOR GREASE TRAP.

dietz engineering



Signing Date: 5/24/2001
dietz engineering
 811 e. plano parkway
 suite 109
 plano, texas 75074
 voice: 972 633-8867
 fax: 972 633-1327

Drawn By: LL
 Checked By: JMC
 Revisions:

SITE RETAIL
 UTILITY PLAN
 PLAN VIEW
 for the
 City of Rockwall, Texas



NORTH
 24"x36" Scale: 1" = 30'
 11"x17" Scale: 1" = 60'
 Vertical Scale: NA

Project Number: E-SPO-001
 Issue Date: 24 MAY 2001
 Sheet Title:

UTILITY PLAN

Sheet No.:

C1.05

BENCHMARK:
 SQUARE CUT ON NORTH CORNER OF INLET ON EAST SIDE OF TACO BUENO.
 ELEVATION = 541.75

AS-BUILT