

EXISTING TREES

No.	TREE
1	3-10" HACKBERRY
2	2-10" HACKBERRY
3	2-10" CEDAR
4	1-8" HACKBERRY
5	2-8" HACKBERRY
6	1-10" HACKBERRY
7	1-7" HACKBERRY
8	3-9" HACKBERRY
9	2-7" HACKBERRY
10	1-7" HACKBERRY
11	2-7" HACKBERRY
12	2-8" HACKBERRY
13	1-10" HACKBERRY
14	1-10" HACKBERRY
15	5-10" HACKBERRY
16	2-6" HACKBERRY
17	2-7" HACKBERRY
19	1-12" CEDAR
20	1-12" HACKBERRY
21	2-12" PECAN
22	1-10" CEDAR
23	1-18" HACKBERRY
24	2-18" HACKBERRY
25	1-9" HACKBERRY
26	1-6" HACKBERRY
27	1-10" CEDAR
28	3-9" CEDAR
29	1-7" HACKBERRY
30	1-12" HACKBERRY
31	4-7" HACKBERRY

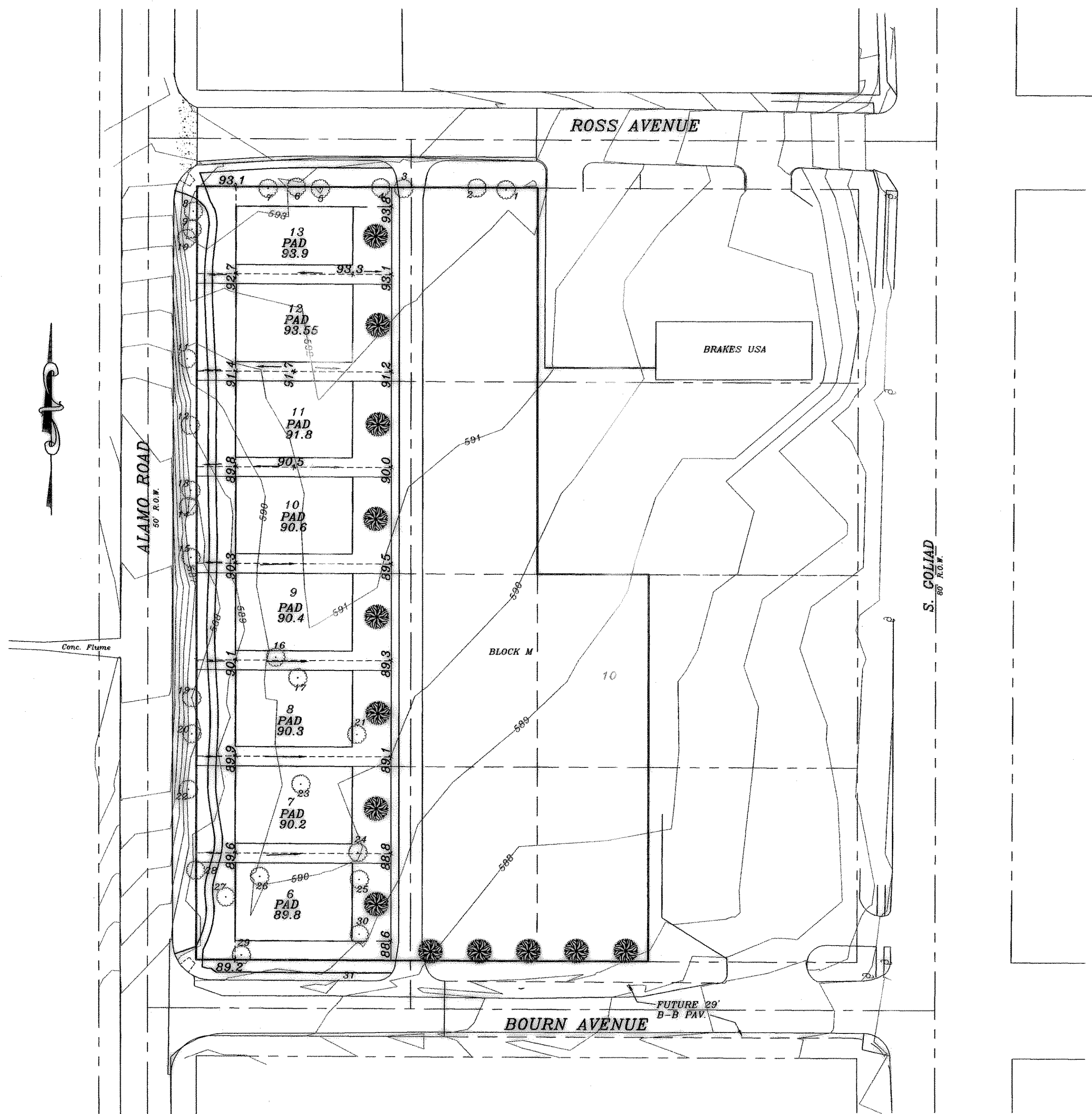
TREES TO BE REMOVED

No.	TREE
17	2-7" HACKBERRY
23	1-18" HACKBERRY
25	1-9" HACKBERRY
26	1-6" HACKBERRY

TOTAL TREE INCHES TO BE REMOVED.....47

TOTAL TREE INCHES REPLACED: 13-3" TREES = 39'

TOTAL TREE INCHES TO BE MITIGATED.....8



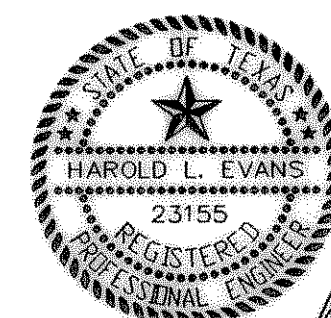
LEGEND

- EXIST. CONTOURS
- PROPOSED FINISHED GRADES
- PROPOSED PAD GRADES
- FLOW ARROWS
- REPLACEMENT TREES

Bench Mark:

- City of Rockwall Monument No. 5 located in the grass median of Summit Ridge Drive just West of F.M. 740
Elevation = 578.708'
- Found cut square on top of curb at NE corner of the intersection of Bourn and Alamo Road.
Elevation = 589.11'

AS BUILT



Handwritten signature and date: 4/1/03

REV.	DATE	SCALE	DESIGN	DRAWN
	4/7/03			
	3/26/03			

HAROLD L. EVANS
CONSULTING ENGINEER
P.O. BOX 28355
2331 GUS THOMASSON ROAD, SUITE 102
DALLAS, TEXAS 75228, (214) 328-8133

SANGER BROTHERS ADDITION

PROPOSED TREE AND GRADING PLAN
REPLAT LOTS 5-8, & WEST 57 FEET
OF LOTS 3&4, BLOCK M
CITY OF ROCKWALL

SHEET NO.	6
JOB NO.	02060