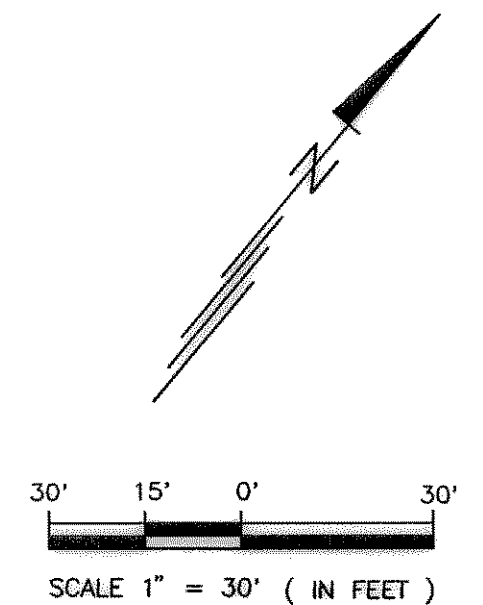


PAVING AND DRAINAGE CONSTRUCTION NOTES

- REFER TO SHEET C5, AND THIS SHEET FOR ALL PAVING AND DRAINAGE DETAILS.
- CONTRACTOR SHALL BE RESPONSIBLE FOR GRADING ALL AREAS TO INSURE POSITIVE DRAINAGE.
- GUIDELINES SET FORTH IN THE MANUAL ON UNIFORM TRAFFIC CONTROL DEVICES SHALL BE OBSERVED BY THE CONTRACTOR.
- ALL SPOIL MATERIAL SHALL BE REMOVED FROM SITE UNLESS OTHERWISE DIRECTED BY THE ENGINEER.
- ALL CURBS TO BE 6" IN HEIGHT, UNLESS OTHERWISE INDICATED
- ALL CONCRETE CONSTRUCTION SHALL BE IN ACCORDANCE WITH LATEST EDITION OF ACI-318.
- ALL CONCRETE FOR PAVEMENT CONSTRUCTION SHALL HAVE A 28 DAY MINIMUM COMPRESSIVE STRENGTH OF 3500 PSI. ODD SHAPE PANELS OR HAND POUR SHEEL BE 6 1/2 SACK CEMENT.
- ALL CONCRETE REINFORCEMENT SHALL BE GRADE 60 IN ACCORDANCE WITH ASTM A-615.
- CONTRACTOR SHALL CONTACT THE CITY BUILDING INSPECTION DEPARTMENT AT LEAST 48 HOURS PRIOR TO COMMENCING ANY CONSTRUCTION.
- REINFORCED CONCRETE PIPE SHALL CONFORM TO ASTM SPECIFICATION C-76 (CLASS III).
- CEMENT STABILIZED SAND SHALL PRODUCE A MINIMUM UNCONFINED COMPRESSIVE STRENGTH OF ONE HUNDRED POUNDS PER SQUARE INCH (100 PSI) IN FORTY-EIGHT (48) HOURS WHEN COMPACTED TO NINETY-FIVE PERCENT (95%) STANDARD PROCTOR DENSITY (ASTM D 698) WITHOUT ADDITIONAL MOISTURE CONTROL, CURED (ASTM C 31, ITEM 9), AND TESTED IN ACCORDANCE WITH ASTM C 31.
- ALL DISTURBED AREAS WITHIN THE PUBLIC RIGHT-OF-WAY SHALL BE CELLULOSE FIBER MULCH SEEDED UPON COMPLETION OF WORK IN THOSE AREAS.
- CONTRACTOR SHALL BE RESPONSIBLE FOR FILING N.O.I. TO THE EPA AGENCY AND MAINTAINED EROSION CONTROL DURING THE CONSTRUCTION PHASE.
- TOP OF CURB ELEVATIONS "TC" ARE 6" ABOVE TOP OF PAVING "TP"



LEGEND:

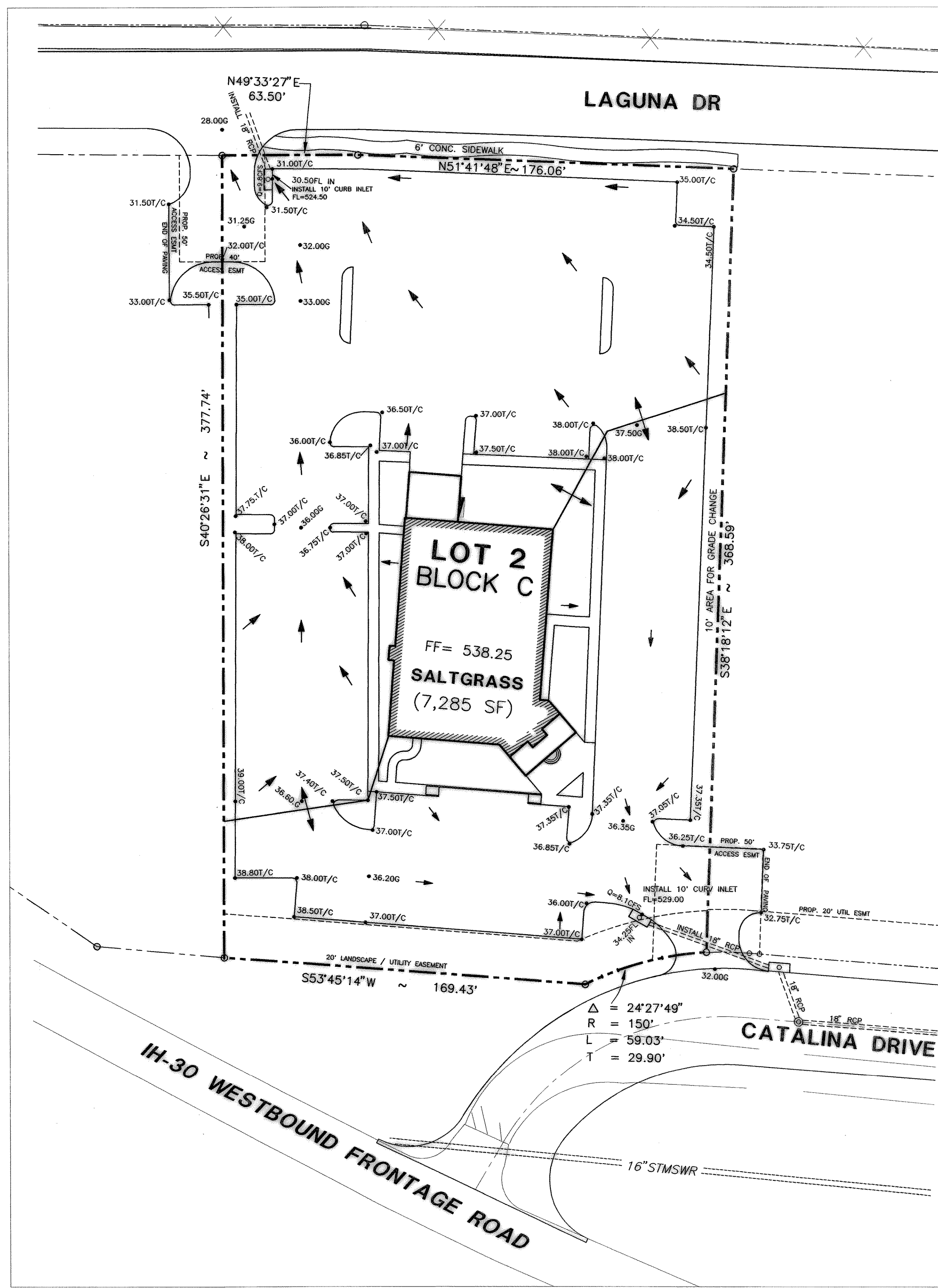
- TC TOP OF CURB
- FF FINISHED FLOOR
- EP EDGE OF PAVEMENT
- FL FLOW LINE
- G GUTTER ELEVATION

- PROPERTY LINE
- X SPOT ELEVATION
- BREAK POINT
- XX.X G GUTTER ELEVATION
- EXISTING ELEVATION

BENCH MARK:

■ ON TOP OF PAVEMENT AT THE CORNER OF CONCRETE DRIVEWAY NE CORNER OF VETERINARY CLINIC BLDG AND PARKING AREA.

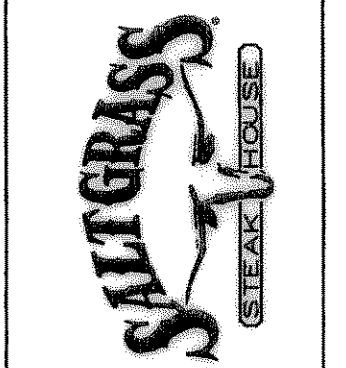
ELEVATION (m.s.l.) 549.14



CONTRACTOR SHALL VERIFY ALL CONDITIONS AND DIMENSIONS AT THE JOB SITE AND NOTIFY THE ARCHITECT OF ANY DIMENSIONAL DISCREPANCIES IMMEDIATELY UPON DISCOVERY. THE ARCHITECT SHALL FABRICATING ANY WORK. DO NOT SCALE DRAWINGS.

THESE DOCUMENTS, THE IDEAS AND THE DECISIONS INCORPORATED HEREIN ARE THE PROPERTY OF SALTGRASS, INC. AND ARE NOT TO BE USED IN WHOLE OR IN PART FOR ANY OTHER PROJECT WITHOUT WRITTEN AUTHORIZATION OF SALTGRASS, INC.

SALTGRASS STEAK HOUSE
 9039 KATY FREEWAY, SUITE 250
 HOUSTON, TX 77024-1111
 PHONE: 713-500-2066
 FAX: 713-500-2066



SITE GRADING PLAN
SALT GRASS STEAK HOUSE
 IH-30 @ HORIZON ROAD
 ROCKWALL, Texas

ASA ENGINEERING
 17011
 DALLAS, TEXAS 75242
 (972) 246-9881
 FAX (972) 246-9881

NO.	DATE	DESCRIPTION	BY	CHKD.	COMMENTS
1	7/21/00	ISSUE FOR PERMIT	MR. ALI		

ISSUE DATE: 7/21/00
 ISSUED FOR: PERMIT
 PERMIT: ADA
 BID: CONST.
 DRAWN BY: MR. ALI
 CHECKED BY: PANKAJ SRIVASTAVA
 SG O.C. BY:
 DATE:
 VERSION:

C:\2000\2008 s.p\CURRENT\c-2.dwg Tue Aug 15 10:00:06 2000
 HP DesignJet 1050C Hewlett-Packard HP-6L/2 devices, ADI 4.3 (v4.1) - Jul 22 1998