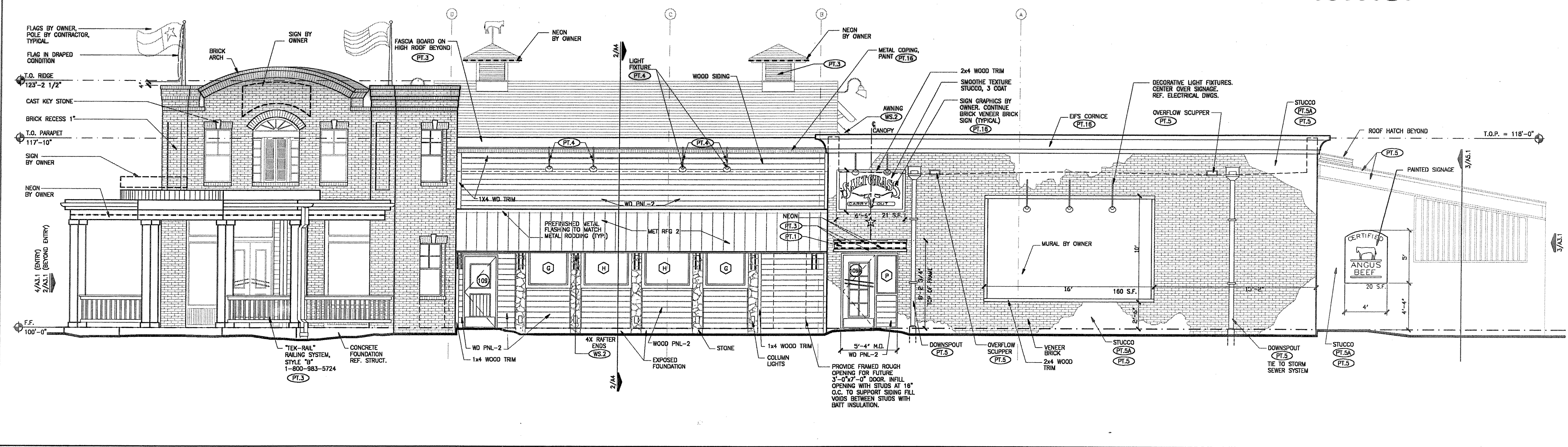
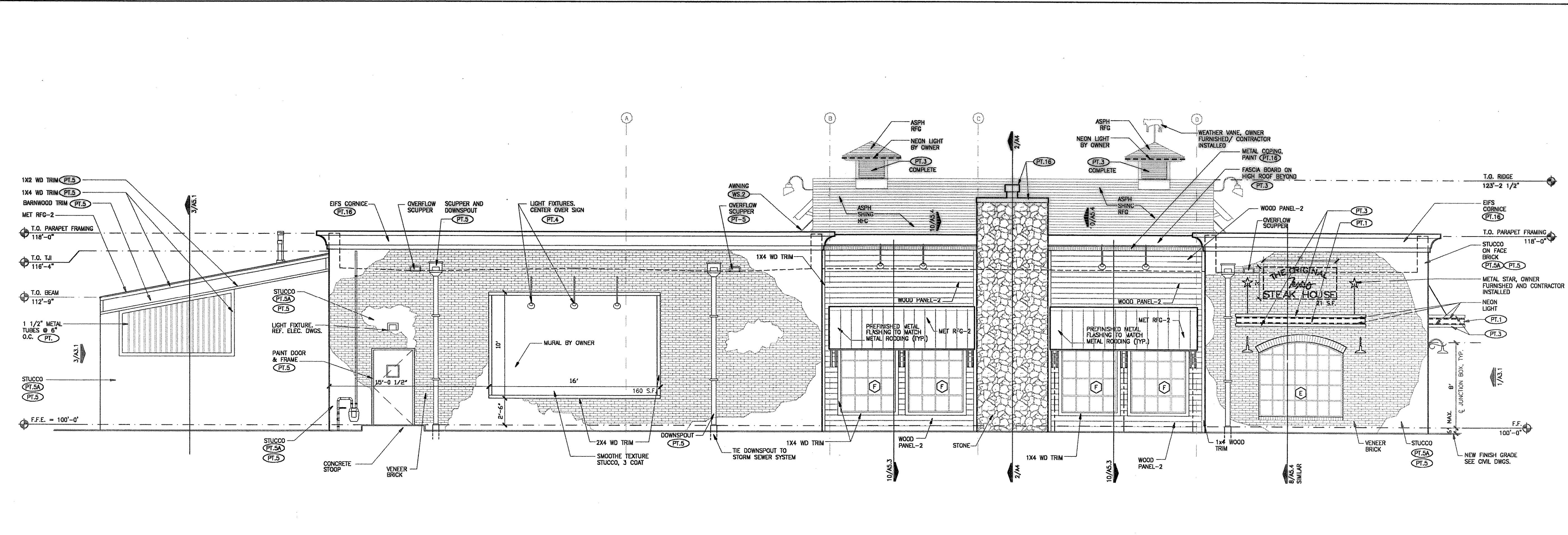


COLOR SCHEDULE 'RED'			COLOR SCHEDULE 'RED'			COLOR SCHEDULE 'RED'			COLOR SCHEDULE 'RED'		
CODE	MANUF.	COLOR	CODE	MANUF.	COLOR	CODE	MANUF.	COLOR	CODE	MANUF.	COLOR
PT1	ICI DULUX	Dark Green Ext. Acrylic S/G 2405-0400 Custom Match	PT6	ICI DULUX	Flat Black Oil Base 4300-9990	PT13	ICI DULUX	Tru-Glaze W/B Epoxy 4406 Tinted Amber Gold Custom Mix	QT1	Doi-Tile Pavers	Red Suretread
PT2	ICI DULUX	Clear Sealer TWP	PT7	ICI DULUX	Black High Gloss 4308-9980	PT14	ICI DULUX	Super Dark High Gloss Clear Varnish INF/ EXT.	QT2	Doi-Tile Pavers	Commercial Red (Abrasive)
PT3	ICI DULUX	Stretolathere-Exterior Acrylic S/C 2406-0100 #727	PT8	ICI DULUX	White High Hiding Interior Latex S/G 1416 #2013	PT16	ICI DULUX	Downing Street Exterior Acrylic S/G 2415-0400 #155	CERAMIC TILE		
PT4	ICI DULUX	Flat Black	PT9	ICI DULUX	Golden Wheat Interior Latex S/G Custom Mix	WOOD STAIN			CT1	American Olean	Teal
PT5	ICI DULUX	Amber Gold - Ext Flat Acrylic Flat 2210-0300 Custom Mix	PT10	ICI DULUX	Colonywood Metal Primer 4120	WS1	ICI DULUX	Burled Cherry 1709-0500 Custom Mix	CT2	American Olean	Claret
PT5A	ICI DULUX	Cotton Bowl - Ext Flat Acrylic Flat 2210-0110 Custom Mix	PT11	ICI DULUX	Almond Brown Exterior Acrylic S/G 2404-0500 10Y06/100	WS2	ICI DULUX	Hawthorne Green 2710-0500	CT3	American Olean	Glass Black
									CT4	American Olean	Bright Walnut
									PLASTIC LAMINATE		
									PL1	Nevarmor	Black Textured
									PL2	Nevarmor	Verde Patina Super Matte
									PL3	Nevarmor	Solid White Textured



1 NORTH ELEVATION
SCALE: 1/4"=1'-0"



2 SOUTH ELEVATION
SCALE: 1/4"=1'-0"

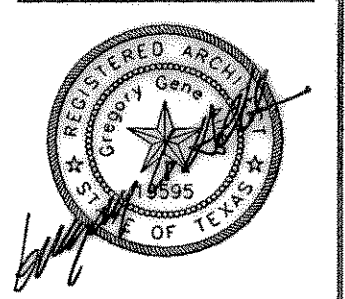
CONTRACTOR SHALL VERIFY ALL CONDITIONS AND DIMENSIONS AT THE PROJECT SITE. ANY DISCREPANCIES OR DIMENSIONAL ERRORS, OMISSIONS OR DISCREPANCIES SHALL BE THE RESPONSIBILITY OF THE CONTRACTOR. FABRICATING ANY WORK - DO NOT SCALE DRAWINGS.

THESE DOCUMENTS, THE IDEAS AND THE DECISIONS INCORPORATED HEREIN ARE THE PROPERTY OF SALTGRASS, INC. AND ARE NOT TO BE USED IN WHOLE OR IN PART FOR ANY OTHER PROJECT WITHOUT WRITTEN AUTHORIZATION OF SALTGRASS, INC.

SALTGRASS STEAK HOUSE

9039 HWY. FREEMAN, SUITE 250
ROCKWALL, TEXAS 75087
PHONE: 972-441-8811
FAX: 972-441-2666

SALTGRASS
I-30 & HORIZON
ROCKWALL, TEXAS



DATE SCALED: 06/12/00
REGISTRATION EXPIRES: 7/31/01

REVISION	DESCRIPTION
1	04/24/00
2	06/12/00
3	06/12/00
4	06/12/00
5	06/12/00
6	06/12/00
7	06/12/00
8	06/12/00
9	06/12/00
10	06/12/00

ISSUE DATE: 04/24/00
ISSUED FOR:
PERMIT: 06/12/00
ADA
BID
CONST.
DRAWN BY: VPB
CHECKED BY:
SG Q.C. BY:
DATE:
VERSION:

BUILDING ELEVATIONS
A3