

LEGEND	
WATER LINE	—
SANITARY SEWER	—
STORM SEWER	—
ELECTRIC	—
RIGHT OF WAY	—
LOT BOUNDARY	—
FIRELANE	—
EASEMENT BOUNDARY	—
100 YEAR FLOODPLAIN	—
SIDEWALK	—
GRADING BREAKLINE	—
EDGE OF PAVING/BACK OF CURB	—
FIRE HYDRANT	—
WATER BLOW OFF VALVE	—
WATER GATE VALVE	—
SANITARY MANHOLE	—
SANITARY CLEANOUT	—
STORM INLET/JUNCTION	—
DRAINAGE SLOPE/DIRECTION	—
EXISTING CONTOURS	—
PROPOSED CONTOURS	—

SURVEY/REPLAT PROVIDED BY:
TerraCorp Associates LLC
 3960 Broadway Blvd. Ste 236
 Garland, TX 75043
 ph. 972-805-4529, fax 972-805-4527
 www.terraCorpsurvey.com

SURVEY LEGEND	
(CM)	CONTROL MONUMENT
IPF	IRON PIPE FOUND
SRF	STEEL ROD FOUND
TCS	3/8-INCH STEEL ROD
W	TERRACORP CAP SET
()	DEED CALLS

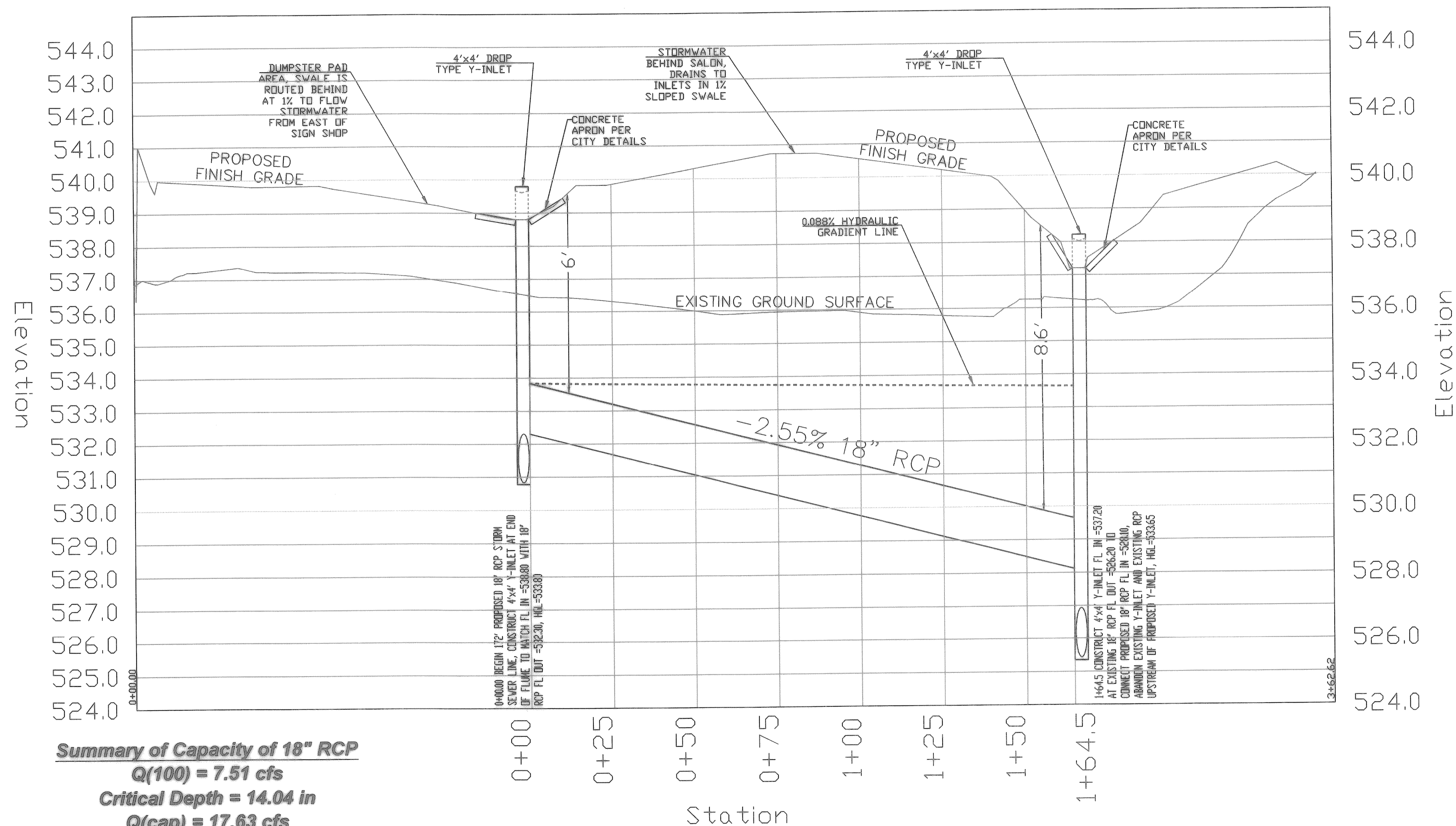
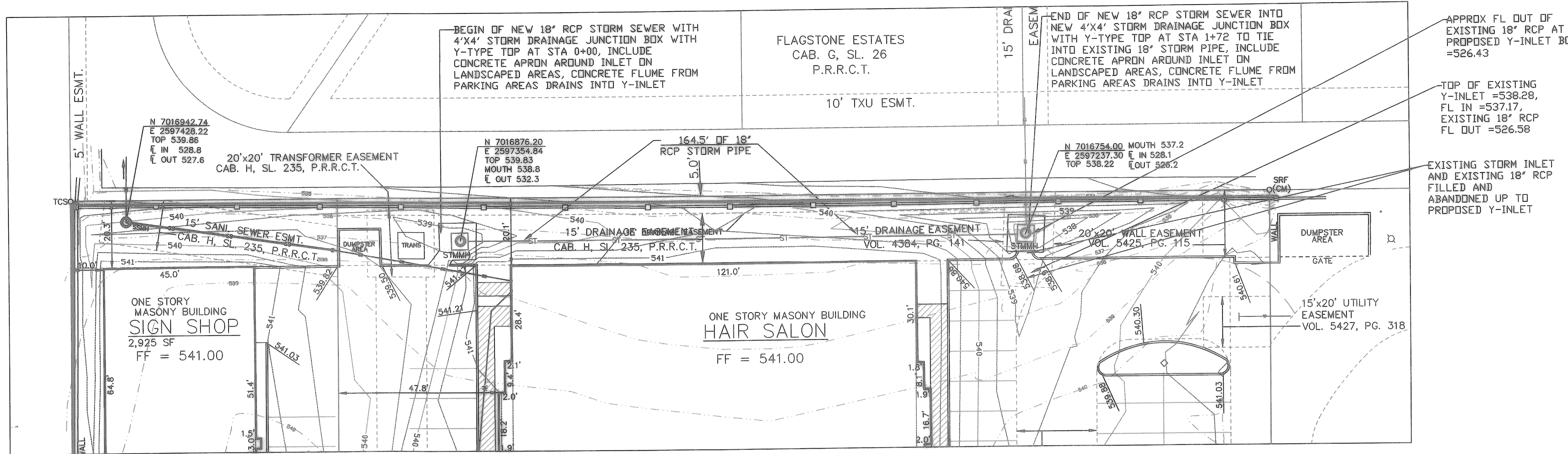
GRADING LEGEND	
TOP	TOP OF PAVING
EOC	EDGE OF CONCRETE
TCC	TOP OF CURB
TOS	TOP OF SIDEWALK
FL	FLOWLINE

SURVEY NOTES
 1. Bearings shown hereon are based on NAD83(CORS96, EPOCH 2002) tied to the Texas Coordinate System of 1983, North Central Zone (4202) using the Geoshack "GeoNet" RTK GPS Network.
 The convergence/mapping angle at the P.O.B is 01°07'01" with a combined scale factor of 0.999854015.

CONSTRUCTION DETAILS ARE AS OUTLINED IN THE STANDARD SPECIFICATIONS FOR PUBLIC WORKS CONSTRUCTION, NORTH CENTRAL TEXAS, THIRD EDITION AND CITY OF ROCKWALL STANDARDS OF DESIGN AND CONSTRUCTION

Capacity of 18" RCP Storm Sewer Pipe out of East Y-Inlet (East Drop Inlet)

$A = 1.77 \text{ sqft, pipe slope} = 2.55\%$
 $Q(100) = 6.24 + 0.741 + 0.529 = 7.51 \text{ cfs}$
 Critical Depth = 14.04 in from Figure 3.23
 $w_p = 4.39 \text{ ft}$
 $Q(\text{cap}) = 1.77(1.486/0.013)^{(1.77/4.39)^{(2/3)}(0.0255)^{(1/2)}} = 17.63 \text{ cfs}$
 $V(\text{max}) = 17.63 \text{ cfs} / 1.77 = 9.86 \text{ ft/s} \approx \pm 9.5 \text{ ft/s}$ from Figure 3.17
 $R = 1.77 / 4.39 = 0.403$
 $S = Qn^2 / 1.486AR^3$
 $S = 7.51(0.013^2) / 1.486(1.77)(0.403^3)$
 $S = 0.088 \%$, therefore
CAPACITY EXCEEDS REQUIREMENTS

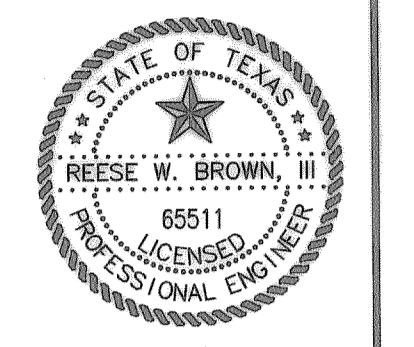


Summary of Capacity of 18" RCP

$Q(100) = 7.51 \text{ cfs}$
 Critical Depth = 14.04 in
 $Q(\text{cap}) = 17.63 \text{ cfs}$
 $V(\text{max}) = 9.86 \text{ ft/s}$
 $S = 0.088 \%$

VERTICAL SCALE: 1"=2'
18" RCP & (2) 4'x4' INLETS PROFILES

WELDON BROWN ENGINEERING, LC
 TBPE #10477
 297 WATERFORD WAY
 MONTGOMERY TEXAS 77356
 (832) 691-1581



Reese W. Brown, III
 THE SEAL AND SIGNATURE APPEARING ON THIS DOCUMENT WAS AUTHORIZED BY REESE W. BROWN, III, P.E. TBPE #65511 ON 11-13-12

OWNER:
ROCKWALL SALONS, LLC
 dba SALONS ELITE
 P.O. BOX 846
 SEAGOVILLE, TX 75159

TO THE BEST OF OUR KNOWLEDGE WELDON BROWN ENGINEERING, LC HEREBY STATES THAT THIS PLAN IS AS-BUILT. THIS INFORMATION PROVIDED IS BASED ON SURVEYING AT THE SITE AND INFORMATION PROVIDED BY THE CONTRACTOR.

PFEFFER/INMAN ADDITION
 2 LOTS - 1.6989 ACRES
 J.D. McFARLAND SURVEY, ABSTRACT NO. 145
 CITY OF ROCKWALL, ROCKWALL COUNTY, TEXAS

SHEET TITLE:
AS-BUILT STORM SEWER PROFILE
 DATE: 11/13/12

C-5