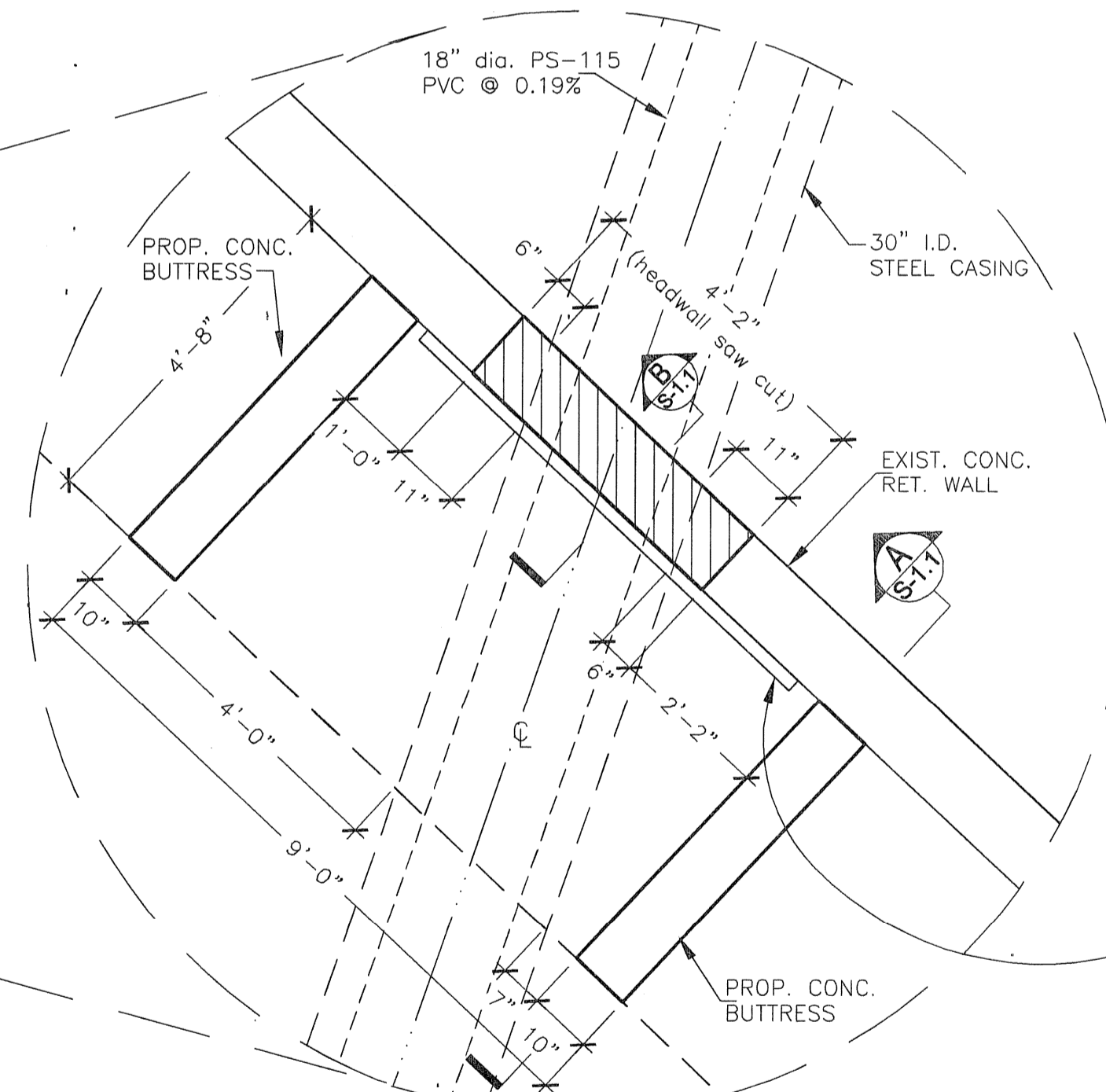


DETAIL "1"
SCALE: 1"=2"
UPSTREAM



DETAIL "2"
SCALE: 1"=2"
DOWNSTREAM

GENERAL NOTES

- All concrete shall achieve a 4,200 pounds-per-square-inch (psi) compressive strength at twenty-eight (28) days in accordance with the latest edition of the A.C.I. standard specifications. Laboratory test results verifying concrete compressive strength shall be made available to the engineer. (Sample daily the first and last truck delivery, four (4) cylinders each, with slump values at (5) inches maximum; contractor shall provide the engineer with a concrete Batch Mix prior to construction. No "Fly Ash" shall be made a part of the "Batch Mix".
- All reinforcing steel (rebars) shall be a minimum Grade 60 or better. Overlap splices to be a minimum of thirty (30) diameters so that all stress forces are transferred continuously in sections. All rebars to have the following clear cover as follows:
 - Base & Top Surfaces two (2) inches.
 - Top Bars two (2) inches.
- The Engineer shall make periodic observations during the construction of the new structure. The Engineer shall observe the following construction activities and/or shall receive laboratory test results verifying the completion of such activities: Placement of the reinforcing steel for all structures.

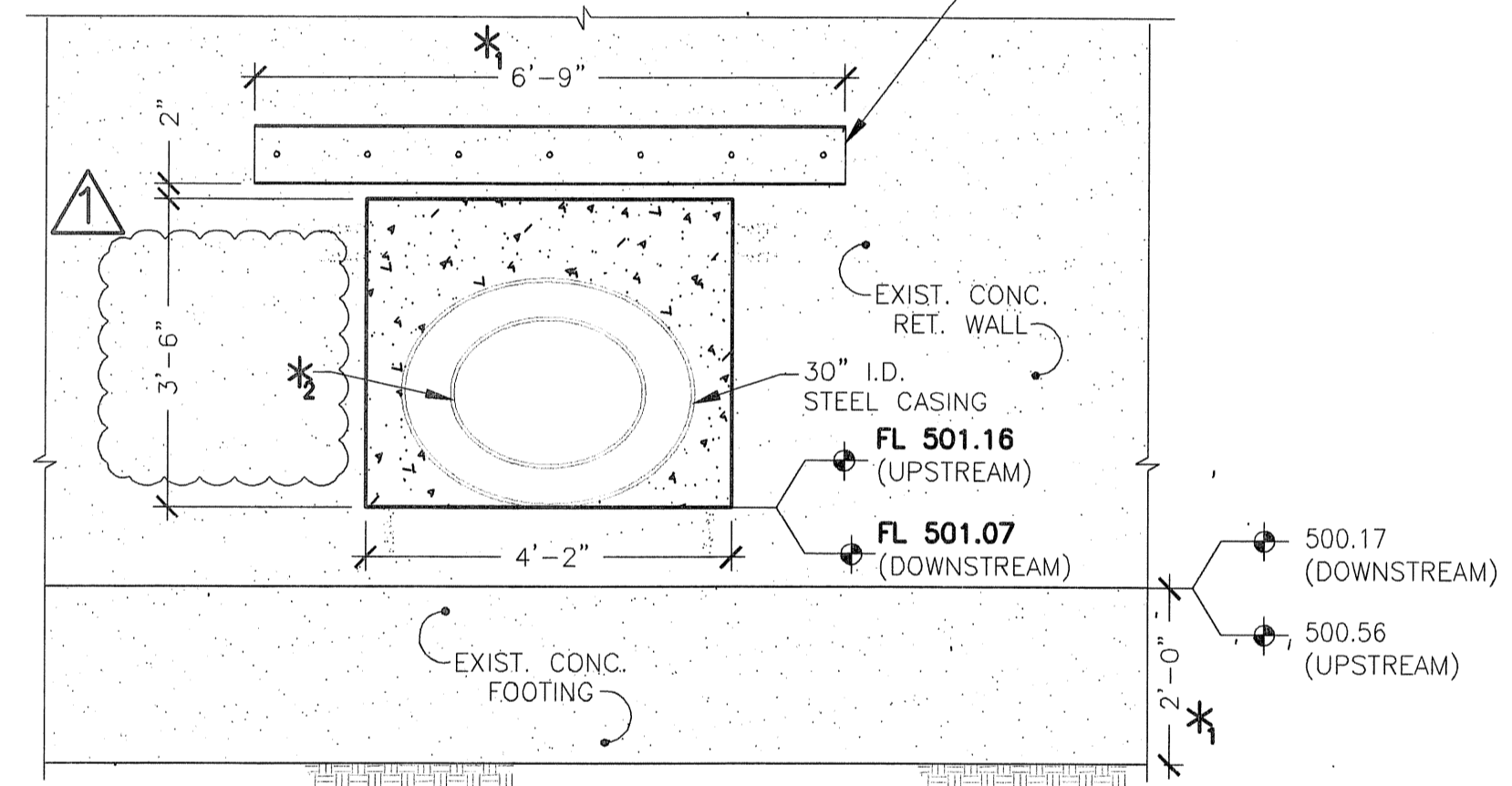
NOTE: It shall be the responsibility of the Contractor/Owners' representative to notify the Engineer when such construction activities are ready for the Engineer to perform such observations.

- Contractor shall provide Engineer with a Core Drilling procedure which may be used in lieu of "saw cutting" existing conc. retaining wall system. Core drilling alternate shall be provided to Engineer prior to construction.

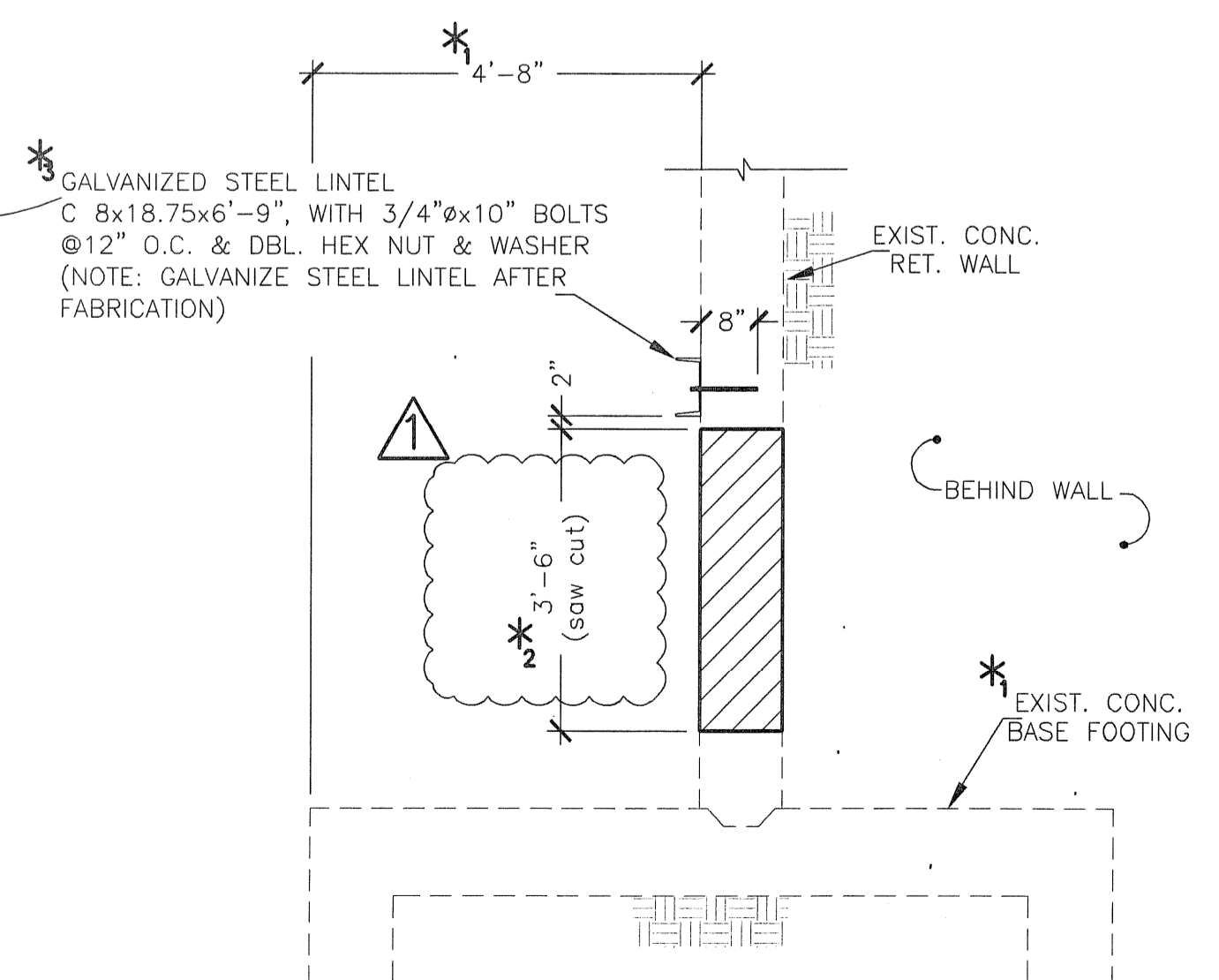
*VERIFY DIMENSION PRIOR TO CONSTRUCTION

*REF.: McADAMS SS PROFILE, SHT. C5
CONTRACTOR SHALL VERIFY LOCATION OF
RETAINING WALL OPENING PRIOR TO
CONSTRUCTION; AND, SHALL VERIFY
CASING AND SS PVC DIMENSIONS.

GALVANIZED STEEL LINTEL
C8x18.75x6'-9", WITH 3/4"Ø BOLTS
@12" O.C. DBL. HEX NUT & WASHER
(NOTE: GALVANIZE STEEL LINTEL AFTER
FABRICATION)



FRONT ELEVATION
PROP. OPENING IN CONC. RET. WALL



SECTION B
SCALE: 1"=2"

AMENDMENT "A"

NOTE:
IT IS THE RESPONSIBILITY OF THE CONTRACTOR(S) AND/OR OWNER/DEVELOPER TO OBTAIN ANY AND ALL ADDENDA AND/OR REVISIONS TO THESE PLAN DESIGN DOCUMENTS THAT MAY REFLECT CHANGES TO THE ORIGINAL DESIGN DETAILS CONTAINED IN THE PLAN DESIGN DOCUMENTS.

RECORD OF FINAL DRAWING

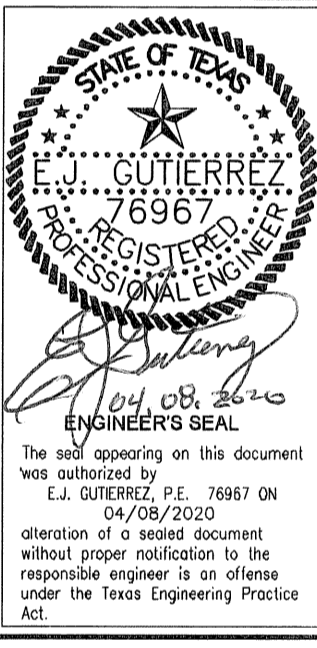
THE INFORMATION ON THESE PLANS ARE CONSIDERED TO BE A "RECORD OF FINAL DRAWINGS" IMPROVEMENTS MADE DURING CONSTRUCTION PROVIDED TO THE ENGINEER BY THE CONTRACTOR. UNLESS OTHERWISE NOTED, THE CONSTRUCTION OF THE IMPROVEMENTS ARE IN GENERAL CONFORMANCE WITH THESE PLANS BASED UPON INFORMATION PROVIDED BY THE CONSTRUCTION CONTRACTOR, AND THE RESPONSIBILITY FOR ACCURACY AND COMPLETENESS, BELONGS TO THE CONTRACTOR.

JEA-HYDROTECH HAS NOT VERIFIED THE ACCURACY AND/OR COMPLETENESS OF THIS INFORMATION AND SHALL NOT BE RESPONSIBLE FOR ANY ERRORS OR OMISSIONS THAT MAY BE INCORPORATED AS A RESULT OF ERRONEOUS INFORMATION PROVIDED BY THE CONTRACTOR, OWNER, OR OTHERS. THOSE RELYING ON THIS RECORD DOCUMENT ARE ADVISED TO OBTAIN INDEPENDENT VERIFICATION OF ITS ACCURACY.

JEA-HYDROTECH ENGINEERING, INC.
By: *E.J. Gutierrez*
E.J. GUTIERREZ, P.E.
DATE: 11, 25, 2020

REVISIONS:
03/13/2020
Revised dimensions
add structural details
add notes

DATE: MARCH 2020
DRAWN BY: CL
DESIGN BY: EG / AZ
REVIEWED BY: AZ
PLANS: PERMIT



STRUCTURAL MODIFICATIONS TO EXISTING REINF. CONC. RETAINING WALL - MIMS ROAD CITY OF ROCKWALL, ROCKWALL COUNTY, TEXAS
PLAN AND DETAILS