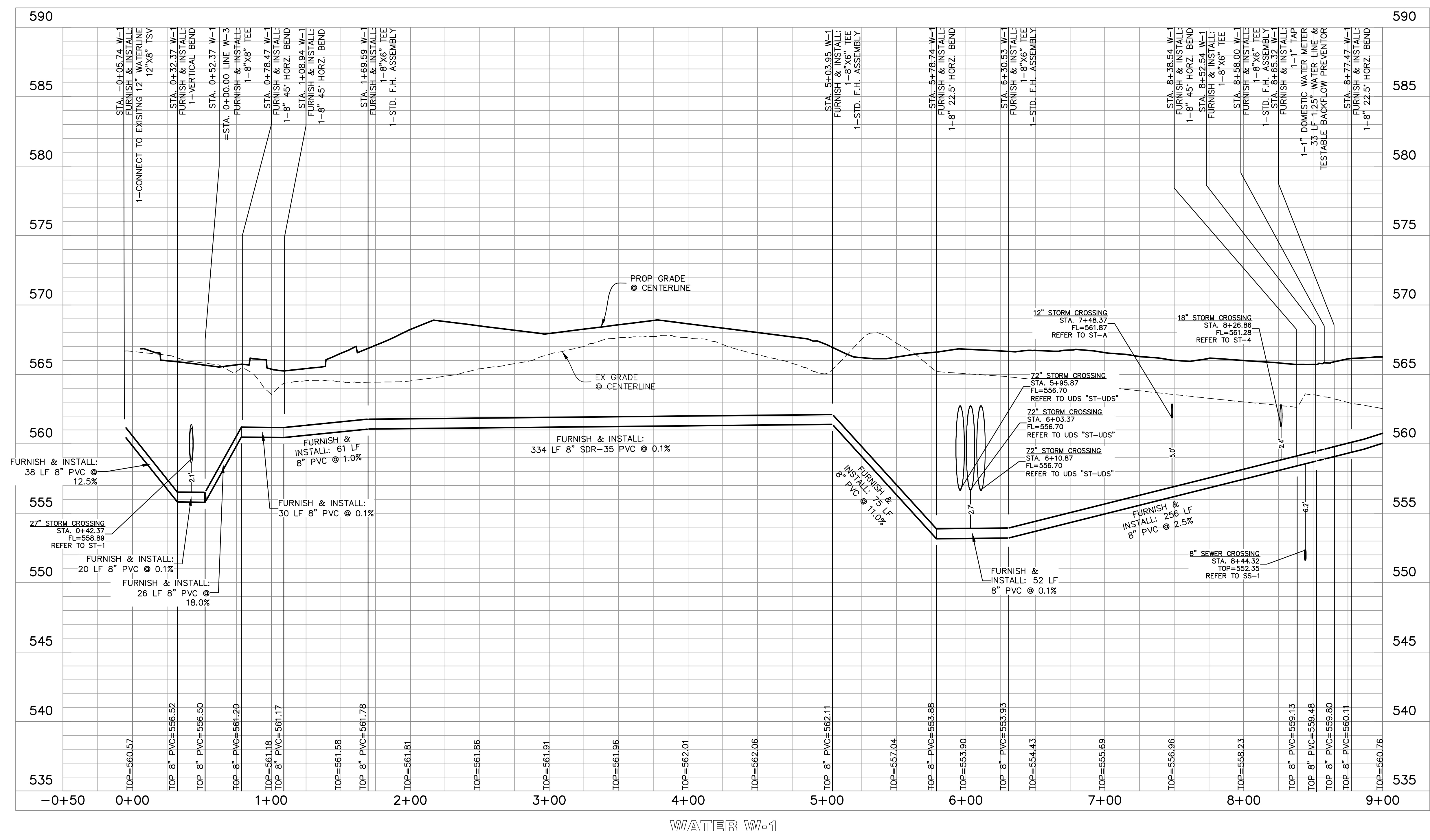


TBM: "X" CUT ON CURB INLET ALONG NORTHSIDE OF DISCOVERY BLVD. APPROXIMATELY 85' WEST OF THE SOUTHWEST CORNER OF SUBJECT PROPERTY LINE. ELEV.= 564.92  
 BM: CITY OF ROCKWALL CONTROL MONUMENT "N1495". CALLED ELEV.= 566.71.  
 MEASURED ELEV. = 566.83

- GENERAL NOTES**
1. ALL T.C.E.Q. SEPARATION REQUIREMENTS MUST BE MET.
  2. THE CONTRACTOR SHALL FIELD VERIFY LOCATIONS AND DEPTHS OF EXISTING UTILITIES PRIOR TO START OF CONSTRUCTION.
  3. ALL WATER MAINS SHALL HAVE A MINIMUM COVER OF 48 INCHES PER CITY STANDARDS.
  4. ALL PUBLIC SEWER TO HAVE GREEN EMS DISKS INSTALLED AT EVERY SERVICE CONNECTION. CLEANOUT, MANHOLE AND CHANGE IN DIRECTION.
  5. ALL MANHOLES TO BE RAVEN LINED OR CITY APPROVED EQUAL.
  6. MANHOLES AND MAIN LINES MUST MEET ALL N.C.T.C.O.G. AND CITY REQUIREMENTS.



File: W:\Projects\WBC20000\Drawings\WBC20000-Water\WBC20000-Water.dwg  
 Plot: 9/25/2023 11:22 AM by Matthew G. St. Marie, Smet. 6/25/2023 10:30 AM, by mmat