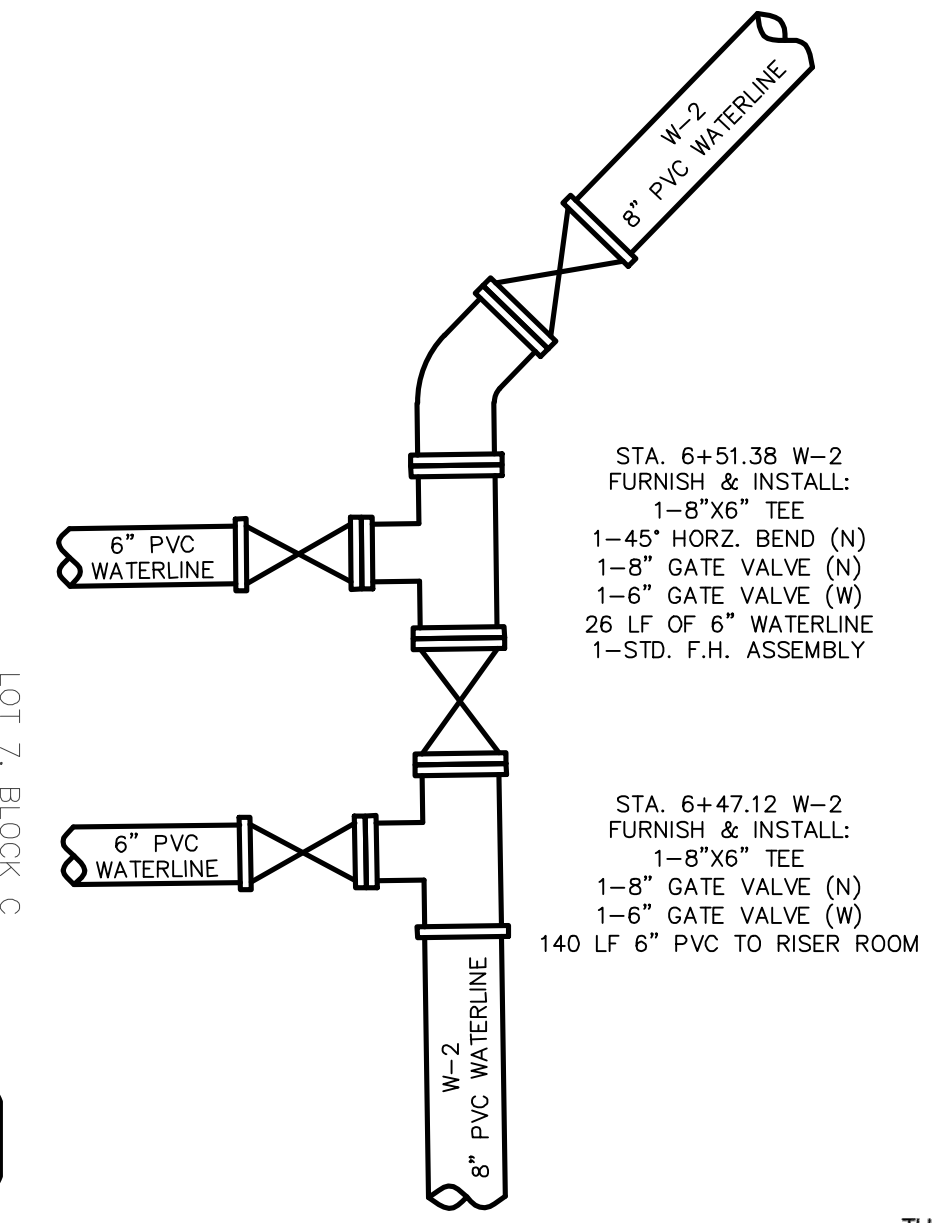


ITEM: "X" CUT ON CURB INLET ALONG NORTHSIDE OF DISCOVERY BLVD. APPROXIMATELY 85' WEST OF THE SOUTHWEST CORNER OF SUBJECT PROPERTY LINE. ELEV.= 564.92

BM: CITY OF ROCKWALL CONTROL MONUMENT "N1495", CALLED ELEV.= 566.71. MEASURED ELEV. = 566.83

GENERAL NOTES

1. ALL T.C.E.Q. SEPARATION REQUIREMENTS MUST BE MET.
2. THE CONTRACTOR SHALL FIELD VERIFY LOCATIONS AND DEPTHS OF EXISTING UTILITIES PRIOR TO START OF CONSTRUCTION.
3. ALL WATER MAINS SHALL HAVE A MINIMUM COVER OF 48 INCHES PER CITY STANDARDS.
4. STORM CONSTRUCTION WILL INCLUDE FURNISHING AND INSTALLING THE MATERIALS AND ALL STORM DRAIN PIPES, BOXES, INLETS, APPURTENANCES, INCLUDING EXCAVATION, EMBEDMENT AND BACKFILL, AS SHOWN ON THESE PLANS.
5. ALL WATER LINES SHALL BE PVC PIPE CONFORMING TO A.W.W.A. STANDARD C-900 DR14 PVC FOR ANY PIPE 12" OR SMALLER AND DR18 PVC FOR ANY PIPE LARGER THAN 12", WITH NSF SEAL, PRESSURE TESTED AND DISINFECTED IN ACCORDANCE WITH MUNICIPAL AND/OR N.C.T.C.O.G. STD. SPECS., UNLESS OTHERWISE NOTED WITHIN THE CONSTRUCTION PLANS.



DETAIL A
 WATERLINE CONNECTION DETAIL
 (NOT TO SCALE)

File: W:\Projects\WBC20000\04-Production\As-Built\Drawings\WBC20000-Add-15-WATER.dwg
 Plot: 9/25/2023 11:37 AM, by Matthew G. St. Marie, Sheet: 8/25/2023 10:44 AM, by mstrie