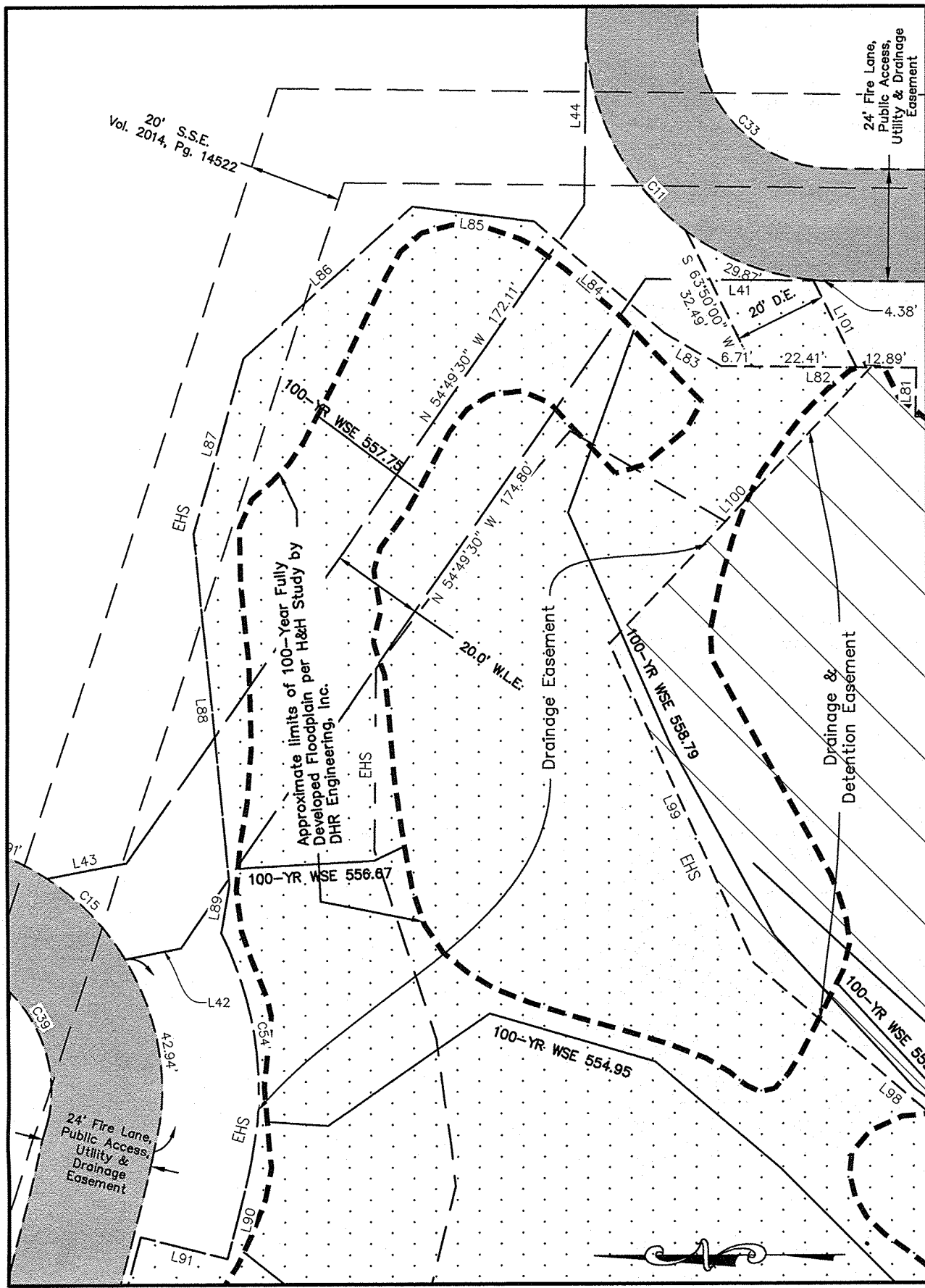


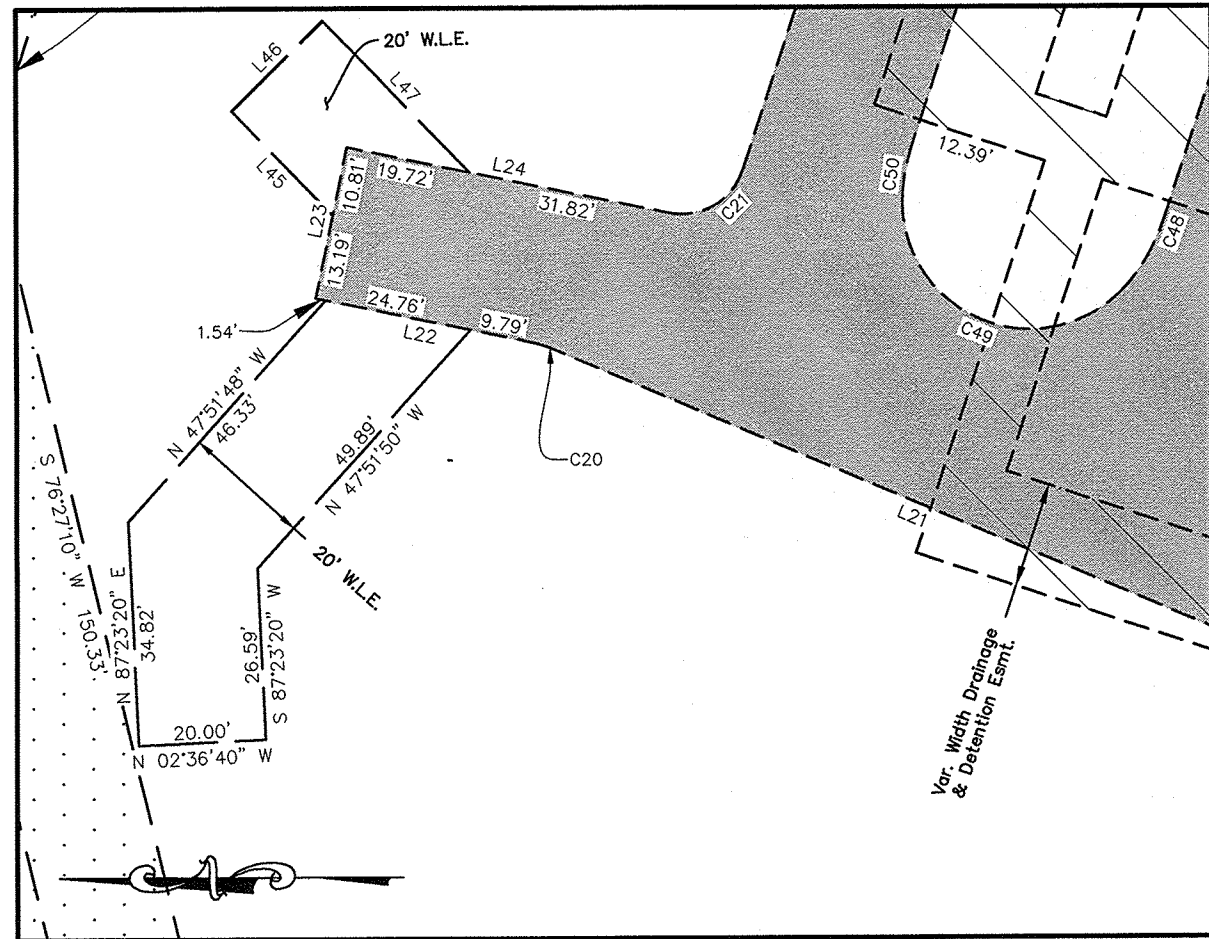
LINE	BEARING	DISTANCE
L1	S 18°18'50" W	75.15'
L2	S 71°41'10" E	121.00'
L3	S 18°18'50" W	56.85'
L4	S 71°41'10" E	94.15'
L5	S 06°34'20" W	97.60'
L6	S 00°38'00" W	94.13'
L7	N 45°47'43" W	61.52'
L8	S 89°12'17" W	35.13'
L9	S 44°12'17" W	59.92'
L10	N 89°21'20" W	30.02'
L11	S 45°38'40" W	8.79'
L12	N 89°21'20" W	20.00'
L13	N 44°21'20" W	8.79'
L14	N 89°21'20" W	11.32'
L15	S 08°43'50" W	51.47'
L16	N 75°44'00" W	67.14'
L17	N 00°38'40" W	21.05'
L18	N 08°43'50" E	159.80'
L19	S 81°16'15" E	91.96'
L20	N 18°18'50" E	66.86'
L21	N 22°54'55" E	124.91'
L22	N 11°36'14" E	34.55'
L23	N 78°23'46" W	24.00'
L24	N 11°36'14" E	51.54'
L25	S 89°21'20" E	14.09'
L26	S 06°34'20" W	3.93'
L27	S 83°25'40" E	2.00'
L28	S 89°21'20" E	29.94'
L29	S 44°21'20" E	8.79'
L30	S 89°21'20" E	20.00'
L31	N 45°38'40" E	8.79'
L32	S 89°21'20" E	11.32'
L33	N 06°34'20" E	24.60'
L34	S 00°38'40" E	21.05'
L35	N 81°16'15" W	77.77'
L36	N 18°18'50" E	42.62'
L37	S 75°44'00" E	67.14'
L38	S 89°25'47" W	57.27'
L39	N 00°34'13" W	20.00'
L40	N 89°25'47" E	44.47'
L41	N 00°38'40" E	40.60'
L42	S 10°36'15" E	12.38'
L43	S 10°36'15" E	17.51'
L44	N 89°21'20" W	38.19'
L45	S 45°41'10" W	22.68'
L46	N 44°18'50" W	20.00'
L47	N 45°41'10" E	32.96'
L48	S 18°18'50" W	13.95'
L49	N 71°41'10" W	27.81'
L50	N 49°25'00" W	3.12'
L51	N 90°00'00" W	43.71'
L52	N 52°34'10" W	61.99'
L53	S 18°18'50" W	11.50'
L54	S 90°00'00" E	20.00'
L55	S 00°00'00" E	17.61'

LINE	BEARING	DISTANCE
L56	S 36°50'55" W	11.39'
L57	S 44°12'17" W	9.98'
L58	S 00°38'40" W	10.00'
L59	N 89°21'20" W	20.00'
L60	S 00°38'40" W	7.39'
L61	S 73°03'05" W	14.00'
L62	S 16°56'55" E	20.00'
L63	S 73°03'05" W	14.00'
L64	N 89°21'20" W	14.38'
L65	N 00°38'40" E	20.00'
L66	S 89°21'20" E	10.45'
L67	S 89°21'20" E	9.94'
L68	N 00°38'40" E	20.00'
L69	S 89°21'33" E	10.00'
L70	S 81°58'10" E	11.91'
L71	N 08°01'50" E	20.00'
L72	N 81°58'10" W	5.79'
L73	N 18°18'50" E	21.88'
L74	S 71°41'10" E	23.27'
L75	N 18°18'50" E	20.00'
L76	N 71°41'10" W	28.28'
L77	S 16°56'53" E	163.37'
L78	S 07°03'06" E	43.36'
L79	S 37°39'30" E	8.81'
L80	S 00°38'48" W	116.04'
L81	N 89°21'20" W	10.46'
L82	S 00°38'40" W	42.00'
L83	S 30°03'20" W	14.15'
L84	S 40°25'15" W	37.00'
L85	S 06°57'10" W	26.46'
L86	N 41°32'35" W	48.90'
L87	S 73°48'44" E	38.90'
L88	N 84°13'40" E	75.69'
L89	S 80°12'00" E	10.33'
L90	N 75°44'00" W	18.57'
L91	N 14°16'00" E	19.40'
L92	S 75°35'35" E	57.67'
L93	S 61°16'00" E	41.22'
L94	S 11°22'15" W	105.69'
L95	N 00°38'35" W	71.59'
L96	S 21°20'00" W	100.75'
L97	N 40°35'00" E	30.58'
L98	N 40°35'00" E	81.56'
L99	N 65°33'04" E	75.17'
L100	S 46°10'00" E	81.71'
L101	S 63°50'00" W	20.93'
L102	N 73°03'07" E	18.50'
L103	S 65°00'00" W	14.32'
L104	S 65°00'00" W	26.26'

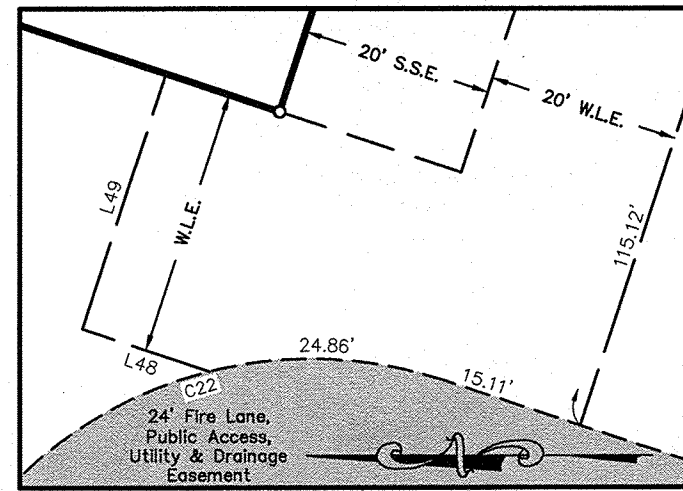
CURVE	RADIUS	DELTA ANGLE	ARC LENGTH	LONG CHORD
C1	557.50'	21°45'33"	211.72'	N 75°36'59" W, 210.45'
C2	642.50'	5°25'16"	60.79'	N 67°26'52" W, 60.77'
C3	20.00'	69°24'58"	24.23'	N 06°45'57" E, 22.78'
C4	30.00'	60°58'32"	31.93'	N 58°25'43" W, 30.44'
C5	15.00'	45°00'00"	11.78'	S 68°08'40" W, 11.48'
C6	15.00'	45°00'00"	11.78'	N 68°08'40" E, 11.48'
C7	15.00'	45°00'00"	11.78'	S 66°51'20" E, 11.48'
C8	15.00'	45°00'00"	11.78'	N 66°51'20" W, 11.48'
C9	54.00'	72°24'25"	68.24'	S 53°09'07" E, 63.79'
C10	54.00'	17°35'35"	16.58'	S 08°09'07" E, 16.52'
C11	54.00'	90°00'00"	84.82'	S 45°38'40" W, 76.37'
C12	30.00'	72°19'50"	37.87'	N 54°28'45" E, 35.41'
C13	30.00'	90°00'00"	47.12'	N 26°41'10" W, 42.43'
C14	30.00'	99°35'00"	52.14'	S 58°31'20" W, 45.82'
C15	54.00'	95°32'10"	90.04'	N 56°29'55" E, 79.97'
C16	54.00'	75°05'20"	70.77'	S 38°11'20" E, 65.81'
C17	54.00'	92°2'30"	8.84'	S 04°02'35" W, 8.83'
C18	54.00'	89°59'55"	84.82'	S 53°43'47" W, 76.37'
C19	30.00'	80°24'55"	42.11'	N 58°31'18" E, 38.73'
C20	15.00'	11°18'40"	2.96'	N 17°15'35" E, 2.96'
C21	10.00'	83°17'24"	14.54'	S 30°02'28" E, 13.29'
C22	44.00'	90°00'00"	69.12'	N 26°41'10" W, 62.23'
C23	30.00'	107°40'10"	56.38'	S 35°31'15" E, 48.44'
C24	54.00'	90°00'00"	84.82'	N 44°21'20" W, 76.37'
C25	3.00'	52°08'54"	2.73'	S 32°38'47" W, 2.64'
C26	20.00'	90°00'00"	31.42'	S 38°25'40" E, 28.28'
C27	15.00'	45°00'00"	11.78'	S 66°51'20" E, 11.48'
C28	15.00'	45°00'00"	11.78'	N 66°51'20" W, 11.48'
C29	15.00'	45°00'00"	11.78'	S 68°08'40" W, 11.48'
C30	15.00'	44°59'52"	11.78'	N 68°08'36" E, 11.48'
C31	30.00'	72°24'25"	37.91'	S 53°09'07" E, 35.44'
C32	30.00'	17°35'35"	9.21'	S 08°09'07" E, 9.18'
C33	30.00'	90°00'00"	47.12'	S 45°38'40" W, 42.43'
C34	30.00'	90°00'00"	47.12'	N 44°21'20" W, 42.43'
C35	45.00'	48°12'23"	37.86'	S 17°31'52" E, 36.75'
C36	2.00'	82°13'52"	2.87'	N 00°31'07" W, 2.63'
C37	37.00'	62°49'34"	40.57'	S 09°10'54" W, 38.57'
C38	30.00'	112°31'32"	58.92'	N 34°01'53" E, 49.90'
C39	30.00'	95°32'10"	50.02'	N 56°29'55" E, 44.43'
C40	30.00'	75°05'20"	39.32'	S 38°11'20" E, 36.56'
C41	30.00'	92°2'30"	4.91'	S 04°02'35" W, 4.90'
C42	30.00'	89°59'55"	47.12'	S 53°43'47" W, 42.43'
C43	30.00'	99°35'05"	52.14'	N 31°28'42" W, 45.82'
C44	30.00'	90°00'00"	47.12'	S 26°41'10" E, 42.43'
C45	30.00'	90°00'00"	47.12'	S 63°18'50" W, 42.43'
C46	30.00'	90°00'00"	47.12'	N 26°41'10" W, 42.43'
C47	30.00'	89°59'50"	47.12'	N 63°18'52" E, 42.43'
C48	30.00'	21°38'10"	11.33'	S 60°52'05" E, 11.26'
C49	20.00'	144°24'07"	50.41'	S 22°09'04" W, 38.09'
C50	30.00'	13°57'44"	7.31'	N 78°40'01" W, 7.29'
C51	30.00'	13°49'13"	7.24'	N 64°46'34" W, 7.22'
C52	20.00'	144°27'06"	50.42'	N 14°21'35" E, 38.09'
C53	30.00'	21°43'44"	11.38'	S 82°33'00" E, 11.31'
C54	75.00'	40°49'03"	53.43'	N 83°51'28" E, 52.31'



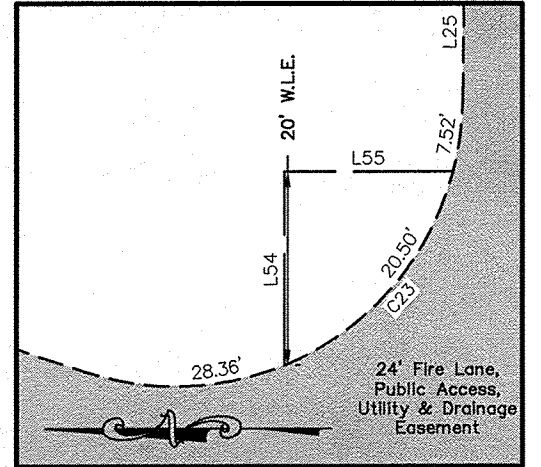
DETAIL "A"
Scale: 1"=30'



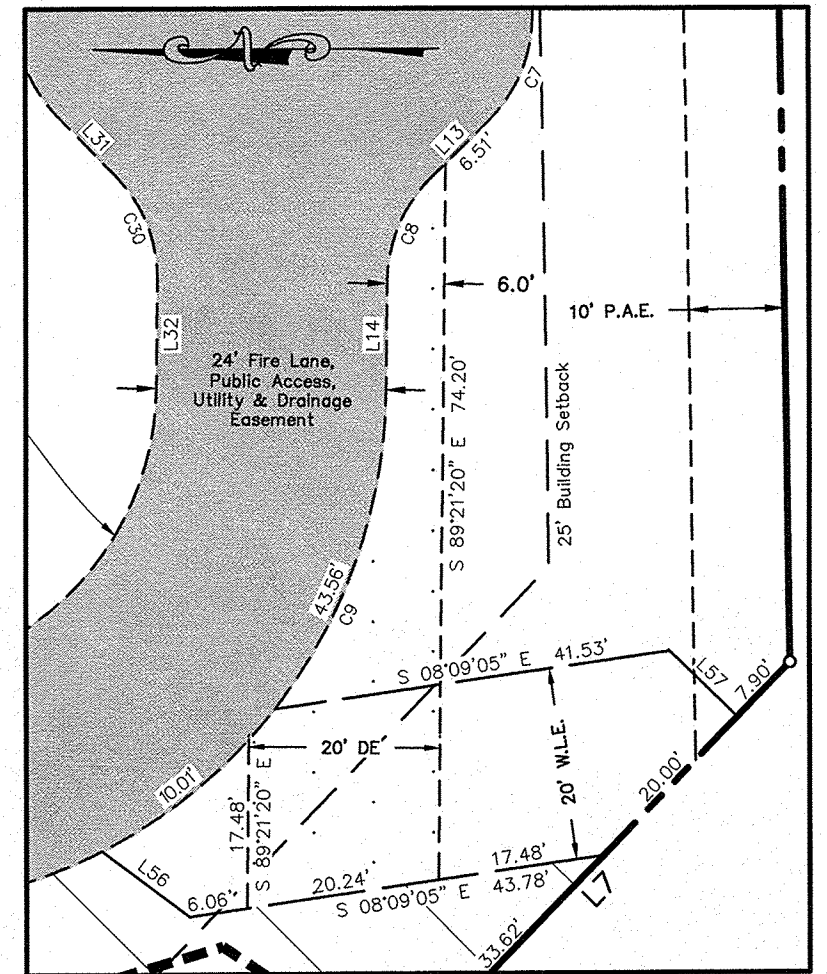
DETAIL "B"
Scale: 1"=30'



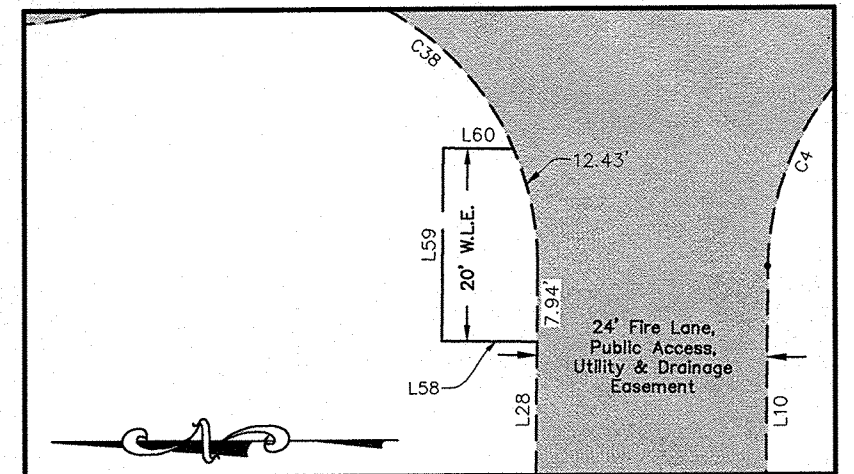
DETAIL "C"
Scale: 1"=20'



DETAIL "D"
Scale: 1"=20'

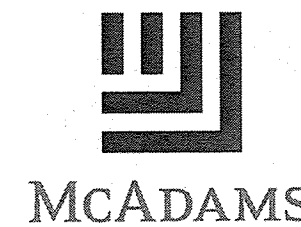


DETAIL "E"
Scale: 1"=20'



DETAIL "F"
Scale: 1"=20'

FINAL PLAT
SWBC Rockwall Addition, Phase 1
Lot 1, Block A
21.280 Acres
 in the
J.M. ALLEN SURVEY, ABSTRACT NO. 2
CITY OF ROCKWALL
ROCKWALL COUNTY, TEXAS



The John R. McAdams
Company, Inc.
(DBA, G&A | McAdams)
111 Hillside Drive
Lewisville, Texas 75057
972.436.9712
201 Country View Drive
Roanoke, Texas 76262
940.240.1012
TBPE: 19762 TBPLS: 10194440
www.gaon.com
www.mcadamsco.com

Fig. 2: 1/20/19 11:45 AM Drawings by G & A Civil Engineers, P.C. 3/22/2019 3:02 PM by Cole Carpenter, Surveyor. 3/22/2019 2:54 PM by Cole Carpenter, Surveyor.