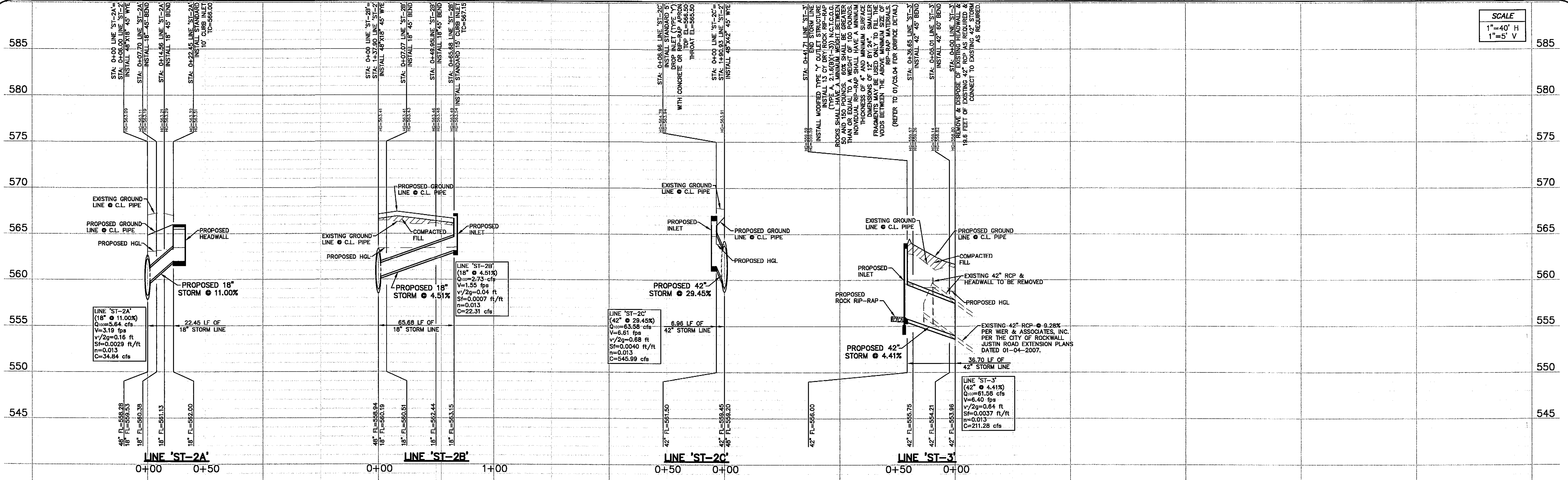


SCALE
1"=40' H
1"=5' V



NOTE:
ALL STORM PIPE
TO BE RCP

BENCH MARK LIST:

BENCHMARK #1 X-CUT FOUND ON THE TOP OF CURB OF THE SOUTHERN CURB RETURN AT EAST SIDE OF INDUSTRIAL BLVD. 560± SOUTH FROM CENTERLINE OF RAILROAD ELEVATION = 564.27
BENCHMARK #2 X-CUT FOUND ON THE TOP OF CURB OF THE SOUTHERN CURB RETURN AT EAST SIDE OF INDUSTRIAL BLVD. 330± SOUTH FROM CENTERLINE OF RAILROAD ELEVATION = 568.39

RECORD DRAWINGS:
IT WAS THE INTENT THAT THE IMPROVEMENTS SHOWN BE CONSTRUCTED ACCORDING TO THESE PLANS AS APPROVED BY THE CITY. THE LINES AND GRADES WERE SET ON THE GROUND FOR CONSTRUCTION ACCORDING TO SAID PLANS. THE CITY INSPECTED THE CONSTRUCTION. THE ENGINEER DID NOT VERIFY LINES OR GRADES AFTER CONSTRUCTION. WE ARE NOT AWARE OF ANY CHANGES OR REVISIONS TO THESE PLANS DURING CONSTRUCTION OTHER THAN THOSE SHOWN.

RANDALL P. POGUE, P.E. DATE: FEBRUARY 25, 2008
TX LIC. NO. 84780

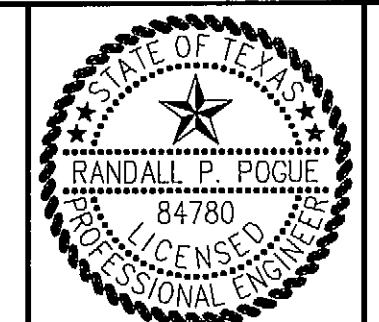
BC0X_05/01/2008 - 5:00PM
N:\WORK\1301-1398\1312-06-094\DWG\1312-06-094-07A.DWG

02-25-08	RECORD DRAWINGS			
04-12-07	FIRE HYDRANT DETAILS REVISIONS			
03-12-07	CITY WATER MAIN RELOCATION			
02-26-07	SITE PLAN REVISIONS			
02-09-07	NORTHERNMOST ACCESS DRIVE & FIRE HYDRANT REVISIONS			
NO.	DATE	REVISION / DESCRIPTION		
DESIGN	DRAWN	DATE	SCALE	NOTES
RPP	BEC	01-29-2007	AS SHOWN	-

OWNER
THE WHITMORE MANUFACTURING COMPANY
P.O. BOX 9300
ROCKWALL, TEXAS 75083
MR. RAY SCHWERTNER
(972) 771-1000 PHONE
(972) 722-2108 FAX

DEVELOPER
SPR VENTURE, INC.
5720 SPERLING, SUITE 630
DALLAS, TEXAS 75240
MR. STEVEN ROSENBERG
(214) 862-8680 PHONE
(972) 385-0279 FAX

THE SEAL APPEARING ON THIS DOCUMENT WAS AUTHORIZED BY RANDALL P. POGUE, P.E. 84780 ON 01-25-2007. ALTERATION OF A SEALED DOCUMENT WITHOUT PROPER NOTIFICATION TO THE RESPONSIBLE ENGINEER IS AN OFFENSE UNDER THE TEXAS ENGINEERING PRACTICE ACT.



POGUE
ENGINEERING & DEVELOPMENT COMPANY, INC.
1515 HERITAGE DRIVE
SUITE 105
MCKINNEY, TEXAS 75069
(214) 544-8880 PHONE
(214) 544-8882 FAX
www.PogueEngineering.com

STORM SEWER PROFILES (2 of 2)
SPR PACKAGING
BLOCK A, LOT 1, SPR PACKAGING ADDITION
NWC OF INDUSTRIAL BLVD. @ JUSTIN ROAD
CITY OF ROCKWALL, TEXAS

SHEET NO.
C5.03