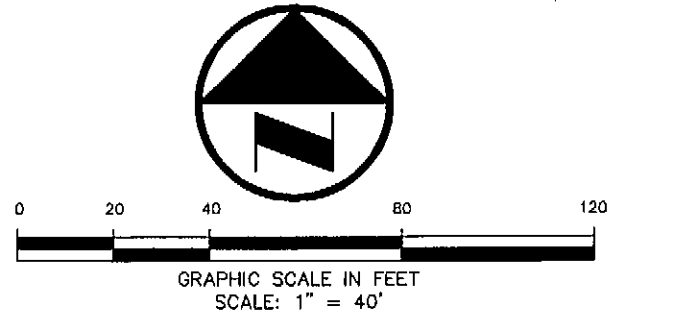


VICINITY MAP NOT TO SCALE



LEGEND

- Legend items: BOLLARD, ELECTRIC METER, POWER POLE, LIGHT STANDARD, WATER METER, WATER VALVE, IRRIGATION CONTROL VALVE, FIRE HYDRANT, FIRE DEPARTMENT CONNECTION, CLEAN OUT, MANHOLE, GAS METER, TRAFFIC SIGNAL CONTROL, TRAFFIC SIGNAL POLE, TRAFFIC SIGN, TELEPHONE BOX, TV BOX, FLAG POLE, LANDSCAPE AREA, PROPERTY LINE, O.H. POWER LINES, U/G TELEPHONE LINES, U/G WATER LINE, U/G GAS LINE, FENCE, EXISTING CONTOURS, EXISTING SPOT GRADES, CONTROLLING MONUMENT, 5/8-INCH IRON ROD WITH "POGUE ENG & DEV" CAP SET, PROPOSED CONTOURS, PROPOSED SPOT GRADES, PROPOSED EROSION CONTROL, PROPOSED DRAINAGE DIVIDES.

CAUTION!! UNDERGROUND UTILITIES ARE LOCATED IN THIS AREA. 48 HOURS PRIOR TO ANY CONSTRUCTION ACTIVITIES, CONTACT LINE LOCATES FOR FRANCHISE UTILITY INFO. CALL BEFORE YOU DIG: TEXAS EXCAVATION SAFETY SYSTEM (TESS) 1-800-344-8377 TEXAS ONE CALL SYSTEMS 1-800-245-4545 LONE STAR NOTIFICATION CENTER 1-800-669-8344 EXT. 5

EROSION CONTROL GENERAL NOTES: 1. REFER TO SHEET C4.02 FOR THE EROSION CONTROL DETAILS AND POLLUTION PREVENTION PLAN NOTES/SPECIFICATIONS/REQUIREMENTS. 2. THE CONTRACTOR SHALL BE RESPONSIBLE FOR MAINTAINING ALL MEASURES OF THIS EROSION CONTROL PLAN (SWPPP) AND COMPLYING WITH ALL FEDERAL, STATE AND LOCAL REQUIREMENTS REGARDING THE SWPPP. 3. THE CONTRACTOR SHALL BE RESPONSIBLE FOR INSTALLING AND MAINTAINING THESE MEASURES INCLUDING WATERING, MOWING AND GENERAL MAINTENANCE UNLESS OTHERWISE RELIEVED OF THESE DUTIES BY THE OWNER.

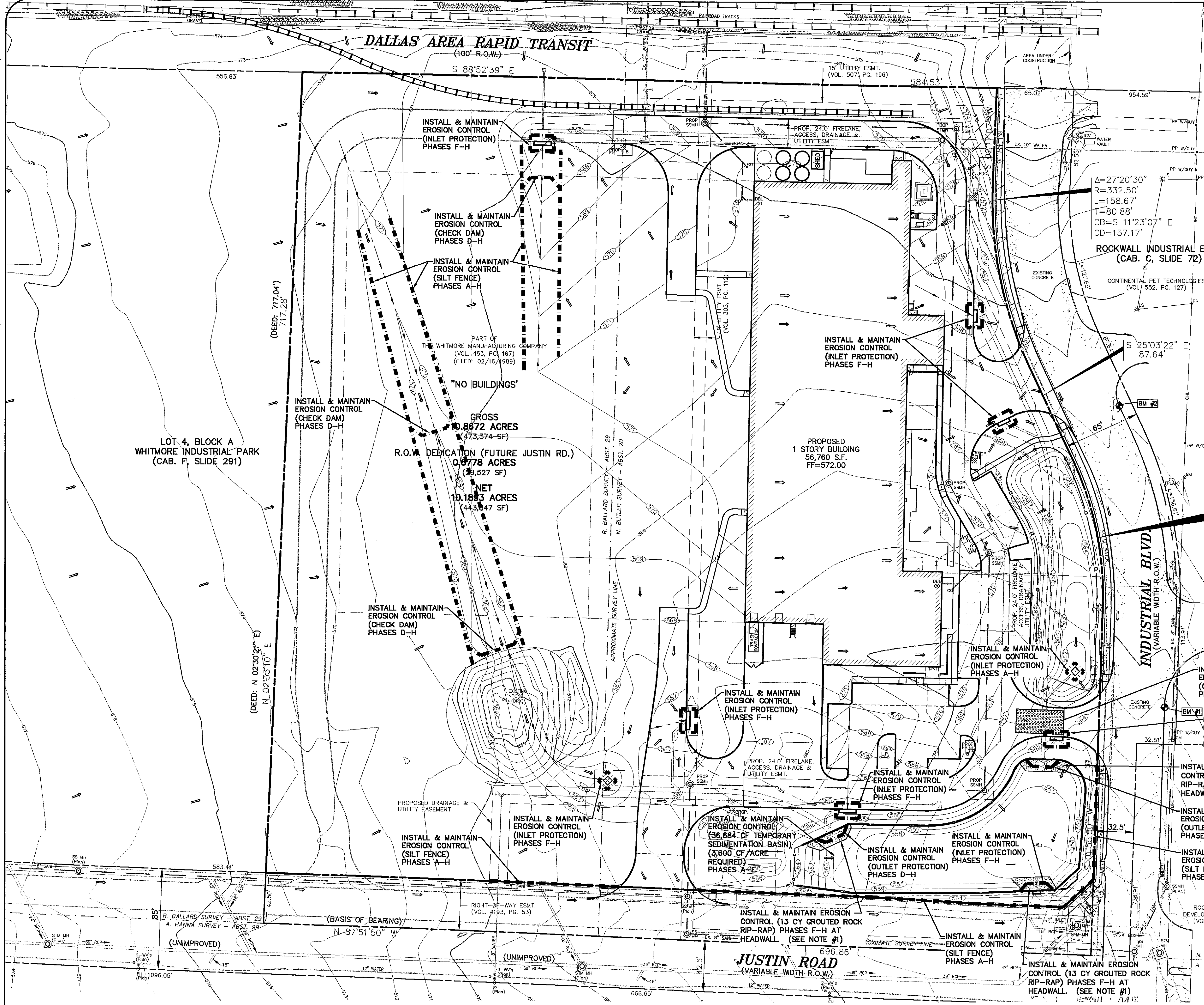
NOTE #1 GROUTED ROCK RIP-RAP (TYPE A, 2.1.6(B)(1-3)) N.C.T.C.O.G. ROCKS SHALL HAVE A MINIMUM WEIGHT BETWEEN 40 AND 150 POUNDS. 60% SHALL BE GREATER THAN OR EQUAL TO A WEIGHT OF 100 POUNDS. INDIVIDUAL RIP-RAP SHALL HAVE A MINIMUM THICKNESS OF 4" AND MINIMUM SURFACE DIMENSIONS OF 12" BY 24". SMALLER FRAGMENTS MAY BE USED ONLY TO FILL THE VOIDS BETWEEN THE ABOVE MINIMUM SIZE OF RIP-RAP MATERIALS.

RECORD DRAWINGS: IT WAS THE INTENT THAT THE IMPROVEMENTS SHOWN BE CONSTRUCTED ACCORDING TO THESE PLANS AS APPROVED BY THE CITY. THE LINES AND GRADES WERE SET ON THE GROUND FOR CONSTRUCTION ACCORDING TO SAID PLANS. THE CITY INSPECTED THE CONSTRUCTION. THE ENGINEER DID NOT VERIFY LINES OR GRADES AFTER CONSTRUCTION. WE ARE NOT AWARE OF ANY CHANGES OR REVISIONS TO THESE PLANS DURING CONSTRUCTION OTHER THAN THOSE SHOWN.

NOTE: ALL SIDE AND BOTTOM OF POND TO BE EITHER SODDED OR ANCHORED CURLEX PRIOR TO PAVING. ALL FILL TO BE COMPACTED TO 95% STANDARD DENSITY WITH SHEEPS FOOT ROLLER.

CONSTRUCTION ACTIVITIES: THE CONSTRUCTION ACTIVITY INCLUDED IN THIS PLAN WILL INCLUDE THE FOLLOWING CONSTRUCTION PHASES: A. CLEARING AND GRUBBING B. STOCK PILING C. ROUGH GRADING D. UTILITY INSTALLATION/EXCAVATION OF TRENCHES E. FINAL OR FINISH GRADING F. PAVEMENT INSTALLATION G. BUILDING CONSTRUCTION H. PREPARATION OF SEEDING AND PLANTING

BENCHMARK LIST: BENCHMARK #1 X-CUT FOUND ON THE TOP OF CURB OF THE SOUTHERN CURB RETURN AT EAST SIDE OF INDUSTRIAL BLVD. 590± SOUTH FROM CENTERLINE OF RAILROAD ELEVATION = 564.27 BENCHMARK #2 X-CUT FOUND ON THE TOP OF CURB OF THE SOUTHERN CURB RETURN AT EAST SIDE OF INDUSTRIAL BLVD. 330± SOUTH FROM CENTERLINE OF RAILROAD ELEVATION = 568.39

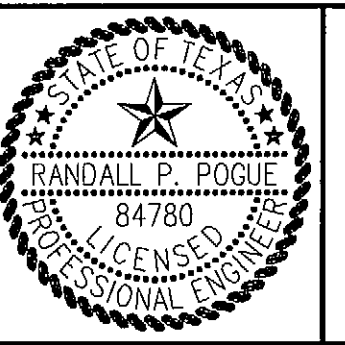


Revision table with columns: NO., DATE, REVISION / DESCRIPTION, DESIGN, DRAWN, DATE, SCALE, NOTES.

OWNER: THE WHITMORE MANUFACTURING COMPANY, P.O. BOX 9300, ROCKWALL, TEXAS 75083, MR. RAY SCHWERTNER (972) 771-1000 PHONE, (972) 722-2108 FAX

DEVELOPER: SPR VENTURE, INC., 5720 SPERLING, SUITE 630, DALLAS, TEXAS 75240, MR. STEVEN ROSENBERG (214) 862-8680 PHONE, (972) 385-0279 FAX

THE SEAL APPEARING ON THIS DOCUMENT WAS AUTHORIZED BY RANDALL P. POGUE, P.E. 84780 ON 01-23-2007. ALTERATION OF A SEALED DOCUMENT WITHOUT PROPER NOTIFICATION TO THE RESPONSIBLE ENGINEER IS AN OFFENSE UNDER THE TEXAS ENGINEERING PRACTICE ACT.



POGUE ENGINEERING & DEVELOPMENT COMPANY, INC. 1515 HERITAGE DRIVE, SUITE 105, MCKINNEY, TEXAS 75069. (214) 544-8880 PHONE, (214) 544-8882 FAX, www.PogueEngineering.com

EROSION CONTROL SITE PLAN (SWPPP) SHEET NO. SPR PACKAGING BLOCK A, LOT 1, SPR PACKAGING ADDITION NWC OF INDUSTRIAL BLVD. @ JUSTIN ROAD CITY OF ROCKWALL, TEXAS C4.01

POGUE ENGINEERING & DEVELOPMENT COMPANY, INC. 2006. ALL RIGHTS RESERVED. THE ENGINEERING DESIGN, DETAIL AND ENGINEERING DRAWINGS FOR THIS PROJECT AND/OR OVERALL PROJECT ARE THE LEGAL PROPERTY OF POGUE ENGINEERING & DEVELOPMENT COMPANY, INC. THEIR USE FOR REPRODUCTION, CONSTRUCTION, OR DISTRIBUTION IS PROHIBITED UNLESS AUTHORIZED IN WRITING BY POGUE ENGINEERING & DEVELOPMENT COMPANY, INC.