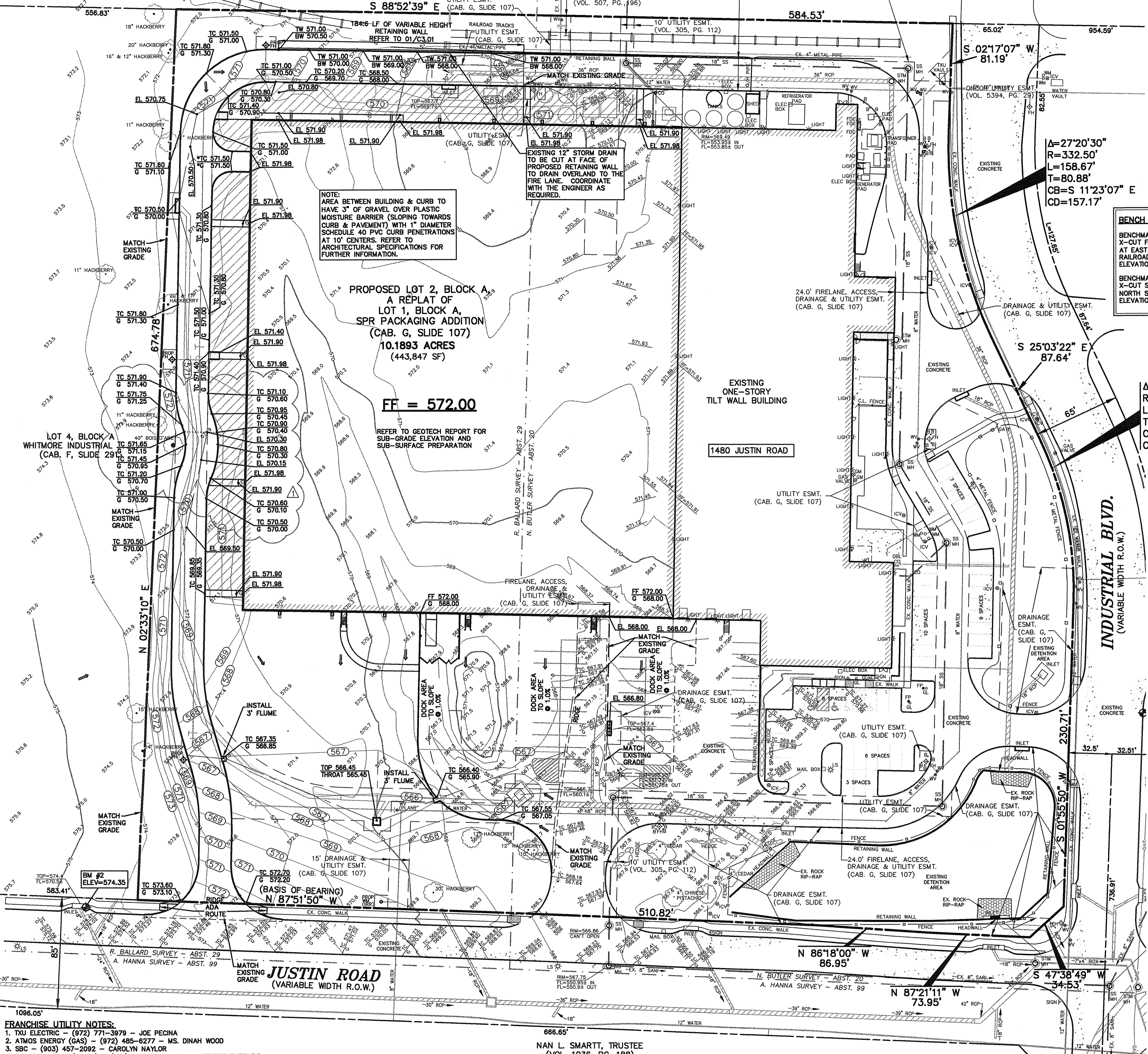


POGUE 09/27/2011 - 1:50PM
 N. LINDSAY (1300-1309) 1312-10-069 DWG 1312-10-069 GRADING PLAN DWG
 © POGUE ENGINEERING & DEVELOPMENT COMPANY, INC. 2010. ALL RIGHTS RESERVED.
 THE SEAL APPEARING ON THIS DOCUMENT WAS AUTHORIZED BY RANDALL P. POGUE, P.E. 84780 ON 07-01-2011. ALTERATION OF A SEALED DOCUMENT WITHOUT PROPER NOTIFICATION TO THE RESPONSIBLE ENGINEER IS AN OFFENSE UNDER THE TEXAS ENGINEERING PRACTICE ACT.

SPR PACKAGING - EXPANSION
 TEXAS BOARD OF PROFESSIONAL ENGINEERS, CERTIFICATE OF REGISTRATION #004681, TEXAS BOARD OF PROFESSIONAL LAND SURVEYING, CERTIFICATE OF REGISTRATION 100421-00

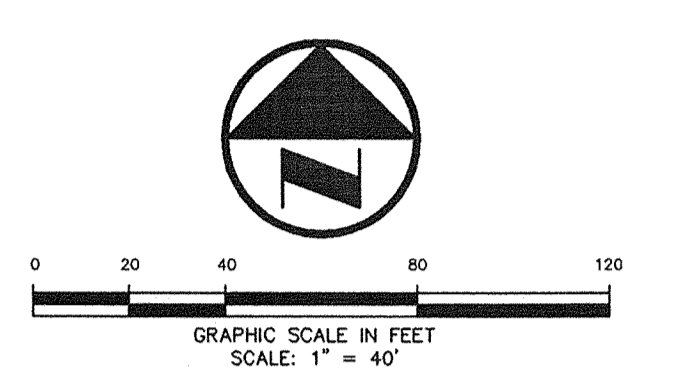
SOUTHERN PACIFIC RAIL ROAD

(100' R.O.W.)

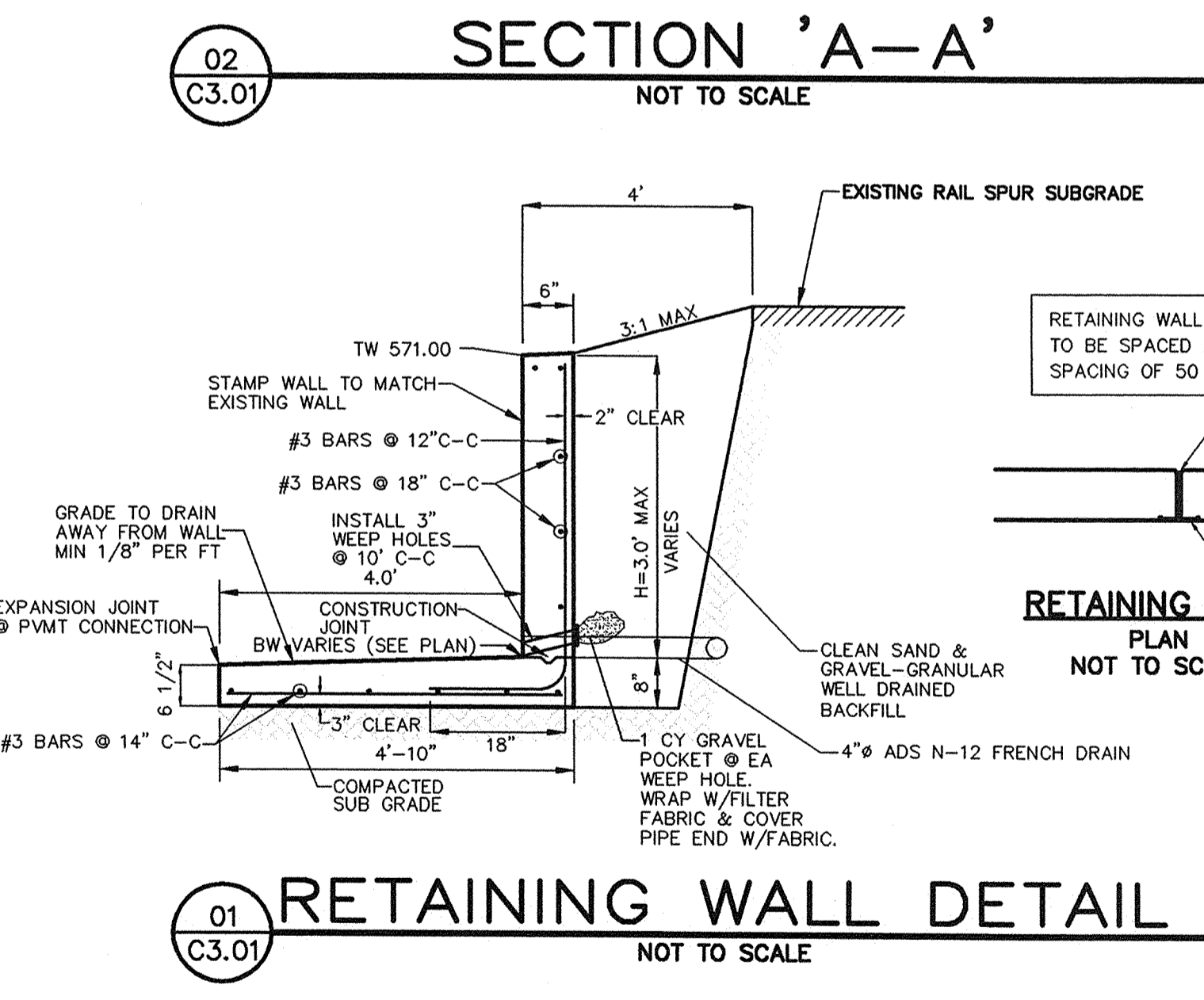
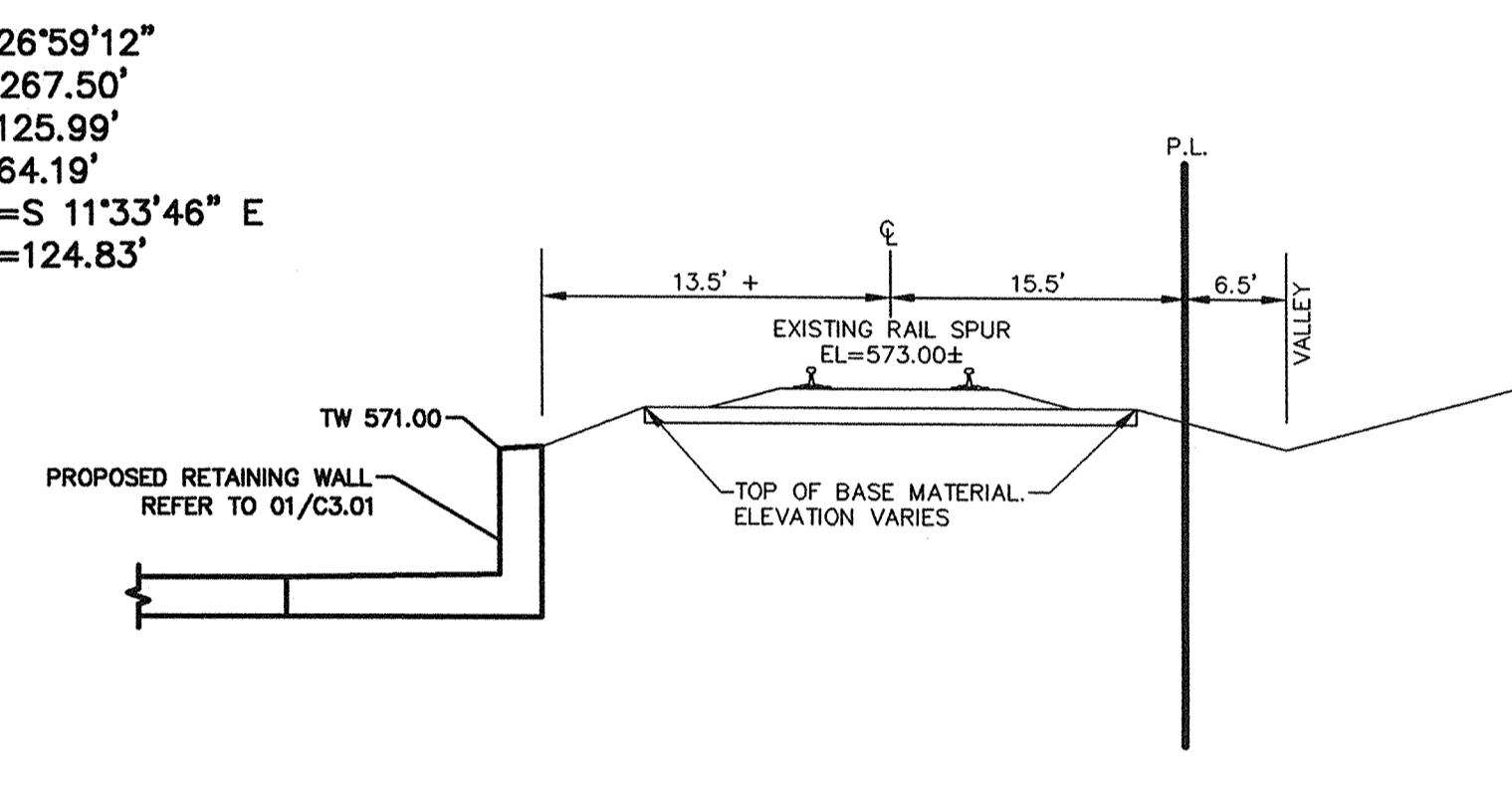


CAUTION!!
 UNDERGROUND UTILITIES ARE LOCATED IN THIS AREA. 48 HOURS PRIOR TO ANY CONSTRUCTION ACTIVITIES, CONTACT LINE LOCATES FOR FRANCHISE UTILITY INFO. CALL BEFORE YOU DIG:
 TEXAS EXCAVATION SAFETY SYSTEM (TESS) 1-800-344-8377
 TEXAS ONE CALL SYSTEMS 1-800-245-4545
 LONE STAR NOTIFICATION CENTER 1-800-669-8344 EXT. 5

BENCHMARK LIST:
 BENCHMARK #1
 X-CUT FOUND ON THE TOP OF CURB OF THE SOUTHERN CURB RETURN AT EAST SIDE OF INDUSTRIAL BLVD. 590'± SOUTH FROM CENTERLINE OF RAILROAD. ELEVATION = 564.27
 BENCHMARK #2
 X-CUT SET AT THE SOUTHEAST CORNER OF CURB INLET LOCATED IN NORTH SIDE OF JUSTIN ROAD 40'± WEST OF SOUTHWEST CORNER OF SITE. ELEVATION = 574.35



- LEGEND**
- B BOLLARD
 - EM ELECTRIC METER
 - PP POWER POLE
 - LS LIGHT STANDARD
 - WM WATER METER
 - WV WATER VALVE
 - ICV IRRIGATION CONTROL VALVE
 - FH FIRE HYDRANT
 - FDC FIRE DEPARTMENT CONNECTION
 - CO2 GAS METER
 - MH MANHOLE
 - GM GAS METER
 - TSC TRAFFIC SIGNAL CONTROL
 - TSP TRAFFIC SIGNAL POLE
 - TRF TRAFFIC SIGN
 - TELE TELEPHONE BOX
 - TV TV BOX
 - FP FLAG POLE
 - PROPERTY LINE
 - O.H. POWER LINES
 - U/G TELEPHONE LINES
 - U/G WATER LINE
 - U/G GAS LINE
 - FENCE
 - EXISTING CONTOURS
 - EXISTING SPOT GRADES
 - PROPOSED CONTOURS
 - PROPOSED SPOT GRADES



ADA ROUTE
 NOTE: MAXIMUM SLOPE FOR ALL ADA PATHS 5% MAX. CROSS FALL IS 2% FOR THE FIRST FIVE FEET FROM THE DOOR A 2% SLOPE (MAX) MUST BE MAINTAINED

RECORD DRAWINGS:
 IT WAS THE INTENT THAT THE IMPROVEMENTS SHOWN BE CONSTRUCTED ACCORDING TO THESE PLANS AS APPROVED BY THE CITY. THE LINES AND GRADES WERE SET ON THE GROUND FOR CONSTRUCTION ACCORDING TO SAID PLANS. THE CITY INSPECTED THE CONSTRUCTION. THE ENGINEER DID NOT VERIFY LINES OR GRADES AFTER CONSTRUCTION. WE ARE NOT AWARE OF ANY CHANGES OR REVISIONS TO THESE PLANS DURING CONSTRUCTION OTHER THAN THOSE SHOWN. DATE: SEPTEMBER 27, 2011

FRANCHISE UTILITY NOTES:

- TXU ELECTRIC - (972) 771-3979 - JOE PECINA
- ATMOS ENERGY (GAS) - (972) 485-6277 - MS. DINAH WOOD
- SBC - (903) 457-2092 - CAROLYN NAYLOR
- CHARTER COMM. (CABLE) - (817) 509-8272 x8896 - HECTOR ELIZONDO

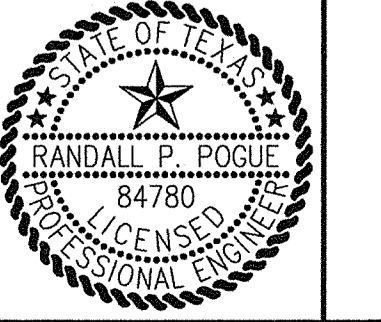
NO.	DATE	REVISION / DESCRIPTION
09-27-11		RECORD DRAWINGS
05-24-11		RFI #6 (S1-2; DELETED RADIUS PIPE)
05-17-11		COORDINATION AROUND 20\"/>

DESIGN	DRAWN	DATE	PI NUMBER
RPP	WTW	03-07-2011	1312-10-069

OWNER
 FLECKLAND, L.P.
 1480 JUSTIN ROAD
 ROCKWALL, TEXAS 75087
 MR. STEVEN ROSENBERG
 (469) 252-1070 PHONE
 (469) 252-1069 FAX

DEVELOPER
 SPR PACKAGING, INC.
 1480 JUSTIN ROAD
 ROCKWALL, TEXAS 75087
 MR. STEVEN ROSENBERG
 (469) 252-1070 PHONE
 (469) 252-1069 FAX

THE SEAL APPEARING ON THIS DOCUMENT WAS AUTHORIZED BY RANDALL P. POGUE, P.E. 84780 ON 07-01-2011. ALTERATION OF A SEALED DOCUMENT WITHOUT PROPER NOTIFICATION TO THE RESPONSIBLE ENGINEER IS AN OFFENSE UNDER THE TEXAS ENGINEERING PRACTICE ACT.



POGUE
 ENGINEERING & DEVELOPMENT COMPANY, INC.
 1512 BRAY CENTRAL DRIVE SUITE 100 MCKINNEY, TEXAS 75069 (214) 544-8882 FAX www.PogueEngineering.com

GRADING PLAN

SPR PACKAGING - EXPANSION
 BLOCK A, LOT 2, SPR PACKAGING ADDITION
 NWC OF INDUSTRIAL BLVD. @ JUSTIN ROAD
 CITY OF ROCKWALL, TEXAS

C3.01

SHEET NO.