

© 2019 Westwood Professional Services, Inc.

LOT 4, BLOCK A  
WHITMORE INDUSTRIAL PARK  
(CAB. F, SLIDE 291)

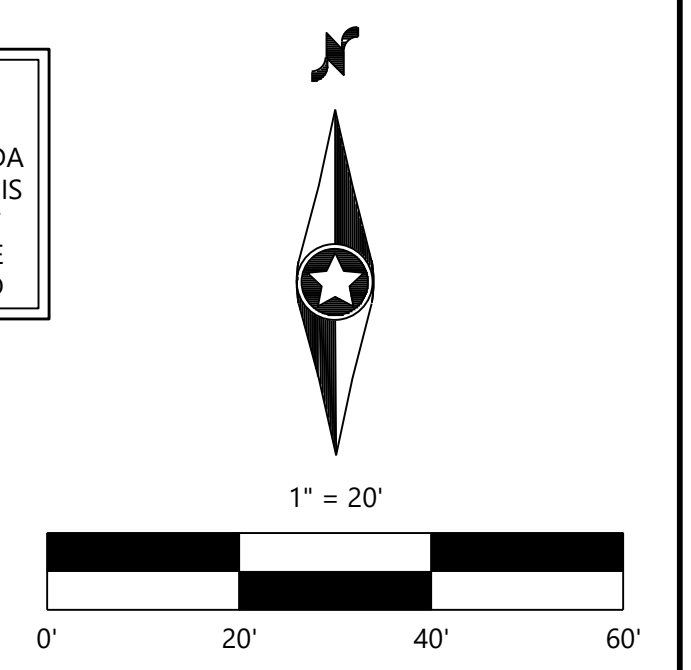
R. BALLARD SURVEY - ABST. 29  
N. BUTLER SURVEY - ABST. 20

**CAUTION !!!  
EXISTING UTILITIES**

EXISTING UTILITIES AND UNDERGROUND FACILITIES INDICATED ON THESE PLANS HAVE BEEN LOCATED FROM REFERENCE INFORMATION. IT SHALL BE THE RESPONSIBILITY OF THE CONTRACTOR TO VERIFY BOTH HORIZONTALLY AND VERTICALLY THE LOCATION OF ALL EXISTING UTILITIES AND UNDERGROUND FACILITIES PRIOR TO CONSTRUCTION. TO TAKE NECESSARY PRECAUTIONS IN ORDER TO PROTECT ALL FACILITIES ENCOUNTERED. THE CONTRACTOR SHALL PRESERVE AND PROTECT ALL EXISTING UTILITIES FROM DAMAGE DURING CONSTRUCTION.

**ADA ROUTE**

NOTE:  
MAXIMUM SLOPE FOR ALL ADA PATHS 5%; MAX. CROSS FALL IS 2%; FOR THE FIRST FIVE FOOT FROM THE DOOR A 2% SLOPE (MAX.) MUST BE MAINTAINED



**LOT 2, BLOCK A  
SPR PACKAGING ADDITION  
(CAB. H, SLIDE 155)**

**10.1893 ACRES  
(443,847 SF)  
DISTURBED AREA = 0.85 ACRES**

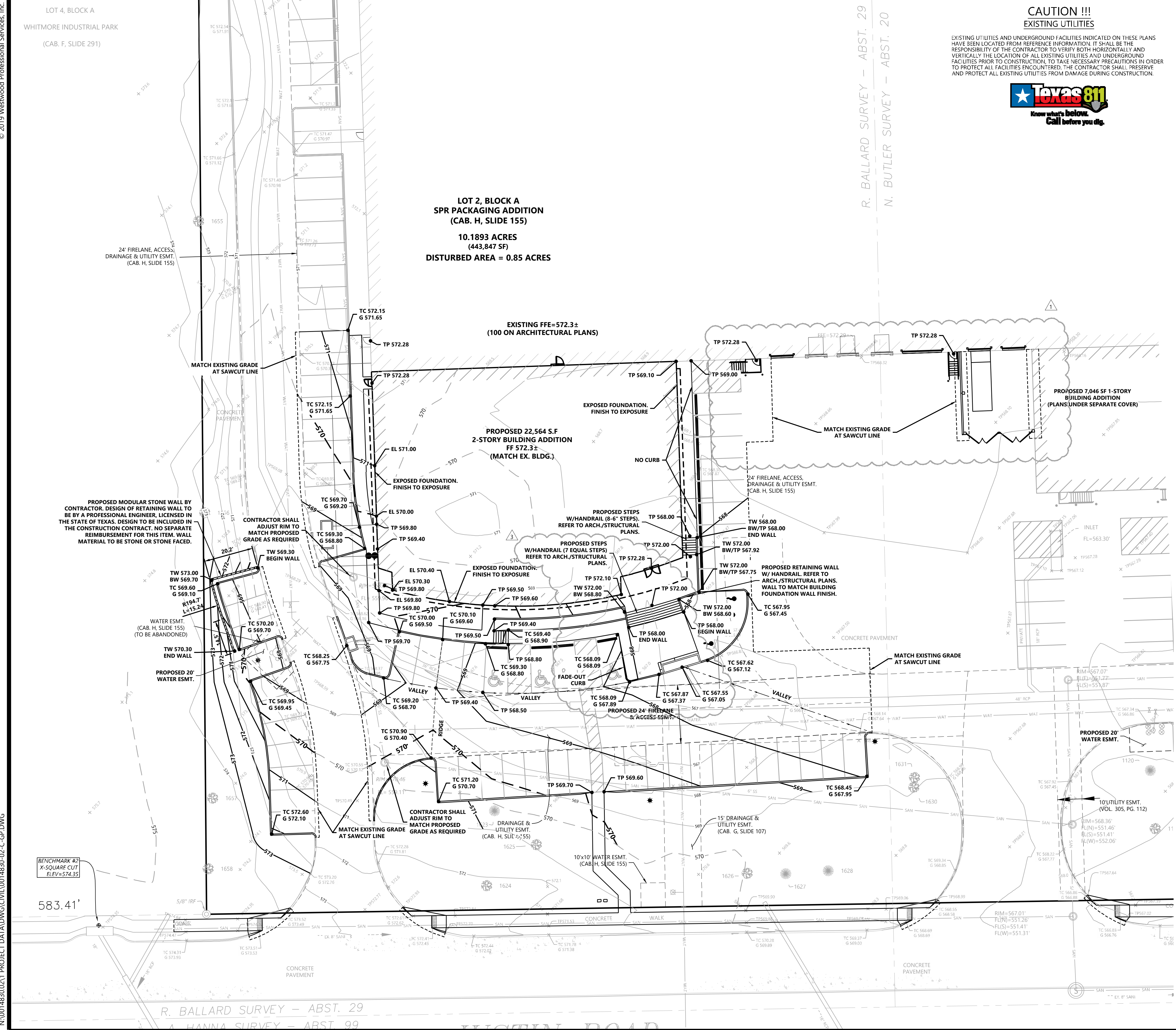
Tree Table		Tree Table	
Point #	Description	Point #	Description
1113	CYPRESS 6" 10S	1628	CEDAR 6" 15S
1114	CYPRESS 6" 15S	1629	HACKBERRY 10" 20S
1117	CEDAR 10" 25S	1630	HACKBERRY 12" 30S
1118	CYPRESS 6" 15S	1631	HACKBERRY 12" 30S
1120	CEDAR 12" 30S	1648	HACKBERRY 8" 20S
1123	CEDAR 8" 20S	1649	HACKBERRY 10" 15S
1125	CEDAR 8" 20S	1650	HACKBERRY 8" 20S
1127	CEDAR 8" 20S	1651	HACKBERRY 18" 30S
1165	UNKNOWN 8" 20S	1652	HACKBERRY 15" 20S
1622	CEDAR 6" 20S	1653	HACKBERRY 9" 25S
1623	CEDAR 6" 20S	1654	BOIS D ARC 30" 70S
1624	UNKNOWN 6" 20S	1655	HACKBERRY 12" 25S
1625	CEDAR ELM 6" 20S	1656	HACKBERRY 8" 20S
1626	HACKBERRY 27" 50S	1657	HACKBERRY 8" 20S
1627	CEDAR 6" 15S	1658	MULBERRY 27" 50S

REMOVE EXISTING TREE

**BENCH MARK LIST:**

**BENCHMARK #1**  
X-CUT FOUND ON THE TOP OF CURB OF THE SOUTHERN CURB RETURN AT EAST SIDE OF INDUSTRIAL BLVD. 590'± SOUTH FROM CENTERLINE OF RAILROAD. ELEVATION = 564.27

**BENCHMARK #2**  
X-CUT SET AT THE SOUTHEAST CORNER OF CURB INLET LOCATED IN NORTH SIDE OF JUSTIN ROAD 40'± WEST OF SOUTHWEST CORNER OF SITE. ELEVATION = 574.35



R. BALLARD SURVEY - ABST. 29  
A HANNA SURVEY - ABST. 99

DESIGNED: AWS  
CHECKED: AWS  
DRAWN: WTW  
HORIZONTAL SCALE: ###  
VERTICAL SCALE: ## of ##

INITIAL ISSUE: 11-08-2019

REVISIONS:	
1	03-16-2020 SITE REVISIONS
2	05-13-2020 FOR CONSTRUCTION
3	12-16-2020 REMOVE AND REPLACE SIDEWALK ALONG JUSTIN ROAD
4	02-05-2021 REVISED ENTRY PLAZA AREA
5	02-08-2021 RECORD DRAWINGS

PREPARED FOR:  
**PROSS DESIGN GROUP, INC.**  
5310 HARVEST HILL ROAD, SUITE 180  
DALLAS, TEXAS 75230



**SPR OFFICE ADDITION**  
ROCKWALL, TEXAS

**Westwood**

Phone (214) 473-4640 2740 Dallas Parkway, Suite 280  
Toll Free (888) 937-5150 Plano, TX 75093  
westwoodps.com

Westwood Professional Services, Inc.  
TYPE FIRM REGISTRATION NO. F-11756  
TSPS FIRM REGISTRATION NO. 10014301

GRADING PLAN

SHEET NUMBER:

**3.01**

PROJECT NUMBER: 0014830-02 DATE: 11-08-2019

SPR OFFICE ADDITION