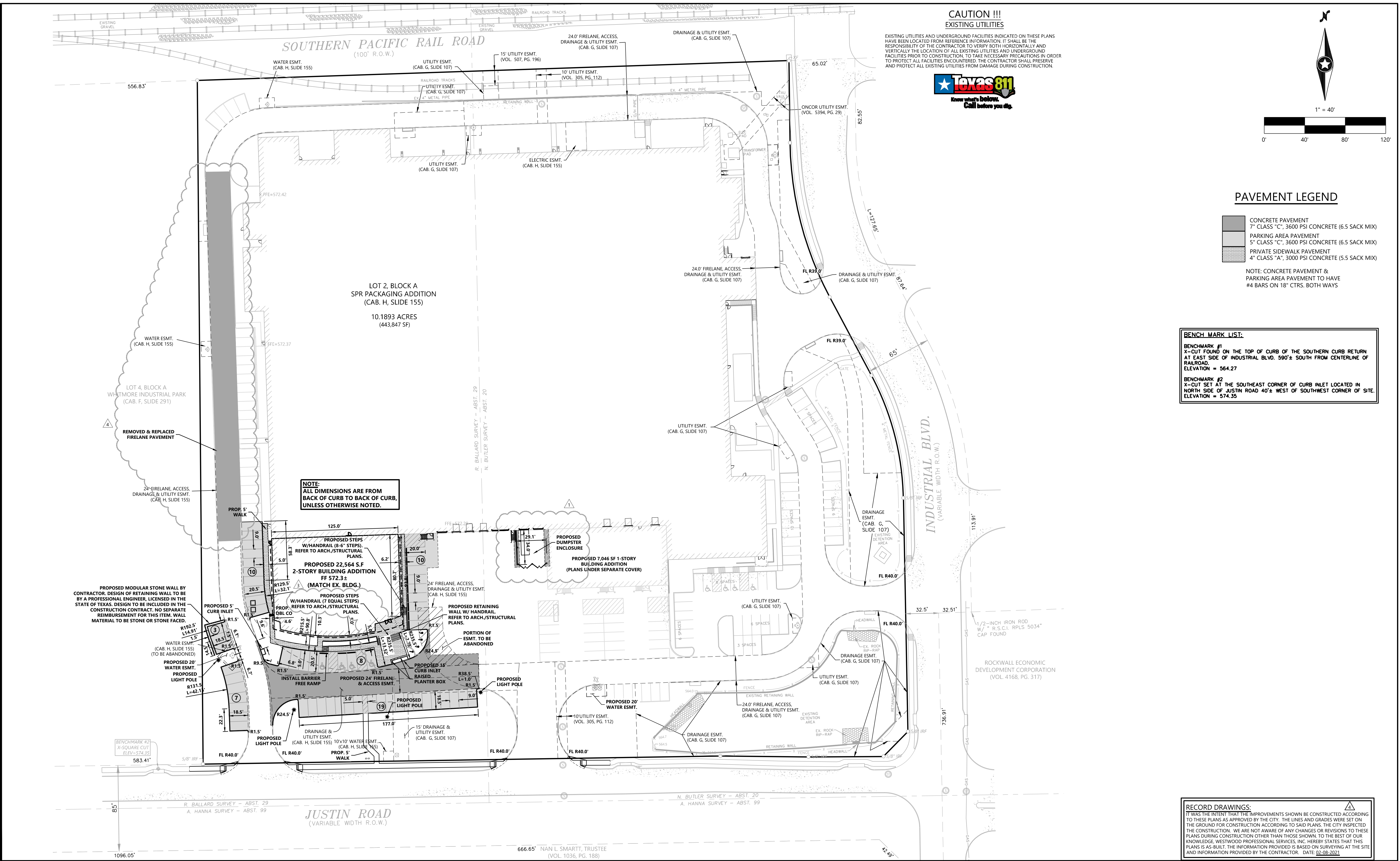


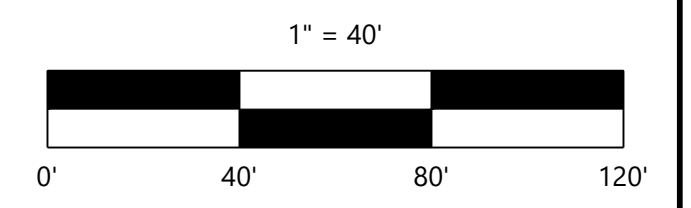
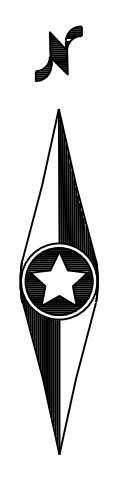
© 2019 Westwood Professional Services, Inc.

N:\0014830\02\1 PROJECT DATA\DWG\CIVIL\0014830-02-C-DWG



**CAUTION !!!**  
EXISTING UTILITIES

EXISTING UTILITIES AND UNDERGROUND FACILITIES INDICATED ON THESE PLANS HAVE BEEN LOCATED FROM REFERENCE INFORMATION. IT SHALL BE THE RESPONSIBILITY OF THE CONTRACTOR TO VERIFY BOTH HORIZONTALLY AND VERTICALLY THE LOCATION OF ALL EXISTING UTILITIES AND UNDERGROUND FACILITIES PRIOR TO CONSTRUCTION. TO TAKE NECESSARY PRECAUTIONS IN ORDER TO PROTECT ALL FACILITIES ENCOUNTERED. THE CONTRACTOR SHALL PRESERVE AND PROTECT ALL EXISTING UTILITIES FROM DAMAGE DURING CONSTRUCTION.



**PAVEMENT LEGEND**

- CONCRETE PAVEMENT
- 
- PARKING AREA PAVEMENT
- 
- PRIVATE SIDEWALK PAVEMENT
- 

NOTE: CONCRETE PAVEMENT & PARKING AREA PAVEMENT TO HAVE #4 BARS ON 18" CTRS. BOTH WAYS

**BENCHMARK LIST:**

**BENCHMARK #1**  
X-CUT FOUND ON THE TOP OF CURB OF THE SOUTHERN CURB RETURN AT EAST SIDE OF INDUSTRIAL BLVD. 590'± SOUTH FROM CENTERLINE OF RAILROAD. ELEVATION = 564.27

**BENCHMARK #2**  
X-CUT SET AT THE SOUTHEAST CORNER OF CURB INLET LOCATED IN NORTH SIDE OF JUSTIN ROAD 40'± WEST OF SOUTHWEST CORNER OF SITE. ELEVATION = 574.35

**NOTE:**  
ALL DIMENSIONS ARE FROM BACK OF CURB TO BACK OF CURB, UNLESS OTHERWISE NOTED.

PROPOSED MODULAR STONE WALL BY CONTRACTOR. DESIGN OF RETAINING WALL TO BE BY A PROFESSIONAL ENGINEER, LICENSED IN THE STATE OF TEXAS. DESIGN TO BE INCLUDED IN THE CONSTRUCTION CONTRACT. NO SEPARATE REIMBURSEMENT FOR THIS ITEM. WALL MATERIAL TO BE STONE OR STONE FACED.

DESIGNED:	AWS
CHECKED:	AWS
DRAWN:	WTW
HORIZONTAL SCALE:	##
VERTICAL SCALE:	## or ##

INITIAL ISSUE:	11-08-2019
REVISIONS:	
1	03-16-2020 SITE REVISIONS
2	05-13-2020 FOR CONSTRUCTION
3	12-16-2020 REMOVE AND REPLACE SIDEWALK ALONG JUSTIN ROAD
4	02-05-2021 REVISED ENTRY PLAZA AREA
5	02-08-2021 RECORD DRAWINGS

PREPARED FOR:  
**PROSS DESIGN GROUP, INC.**  
5310 HARVEST HILL ROAD, SUITE 180  
DALLAS, TEXAS 75230



**SPR OFFICE ADDITION**  
ROCKWALL, TEXAS

**Westwood**

Phone (214) 473-4640 2740 Dallas Parkway, Suite 280  
Toll Free (888) 937-5150 Plano, TX 75093  
westwoodps.com

Westwood Professional Services, Inc.  
TPE FIRM REGISTRATION NO. F-11756  
TPE FIRM REGISTRATION NO. 10074301

**DIMENSIONAL CONTROL & PAVING PLAN**

SHEET NUMBER:  
**1.02**

PROJECT NUMBER: 0014830-02 DATE: 11-08-2019

**RECORD DRAWINGS:**

IT WAS THE INTENT THAT THE IMPROVEMENTS SHOWN BE CONSTRUCTED ACCORDING TO THESE PLANS AS APPROVED BY THE CITY. THE LINES AND GRADES WERE SET ON THE GROUND FOR CONSTRUCTION ACCORDING TO SAID PLANS. THE CITY INSPECTED THE CONSTRUCTION. WE ARE NOT AWARE OF ANY CHANGES OR REVISIONS TO THESE PLANS DURING CONSTRUCTION OTHER THAN THOSE SHOWN TO THE BEST OF OUR KNOWLEDGE. WESTWOOD PROFESSIONAL SERVICES, INC. HEREBY STATES THAT THIS PLANS IS AS-BUILT. THE INFORMATION PROVIDED IS BASED ON SURVEYING AT THE SITE AND INFORMATION PROVIDED BY THE CONTRACTOR. DATE: 02-08-2021

SPR OFFICE ADDITION